

1205

Montana Avenue
Santa Monica

± 850 SF retail space available

Available



contact the leasing team



executive summary

An exceptional leasing opportunity is now available on Montana Avenue in Santa Monica — one of Los Angeles' most sought-after luxury retail corridors. This beautifully designed approximately 850-square-foot storefront offers an ideal setting for a jewelry boutique, luxury retailer, designer showroom, or other high-end specialty concept seeking a presence in a premier coastal market. The space is fully built out as an elegant jewelry store, featuring refined finishes, sophisticated lighting, high-end display areas, and a welcoming storefront presence that complements the upscale character of Montana Avenue. Its efficient layout creates an elevated customer experience while allowing for merchandising flexibility. Surrounded by established boutiques, cafés, wellness brands, and affluent neighborhood-serving retailers, the property benefits from strong pedestrian traffic and a loyal local clientele. Montana Avenue is widely recognized for its walkability, strong demographics, and enduring appeal within the Westside retail market. This offering presents a rare opportunity to secure a turnkey boutique space in one of Southern California's most desirable shopping districts, ideally suited for tenants seeking a polished, move-in-ready retail environment with long-term brand positioning potential.

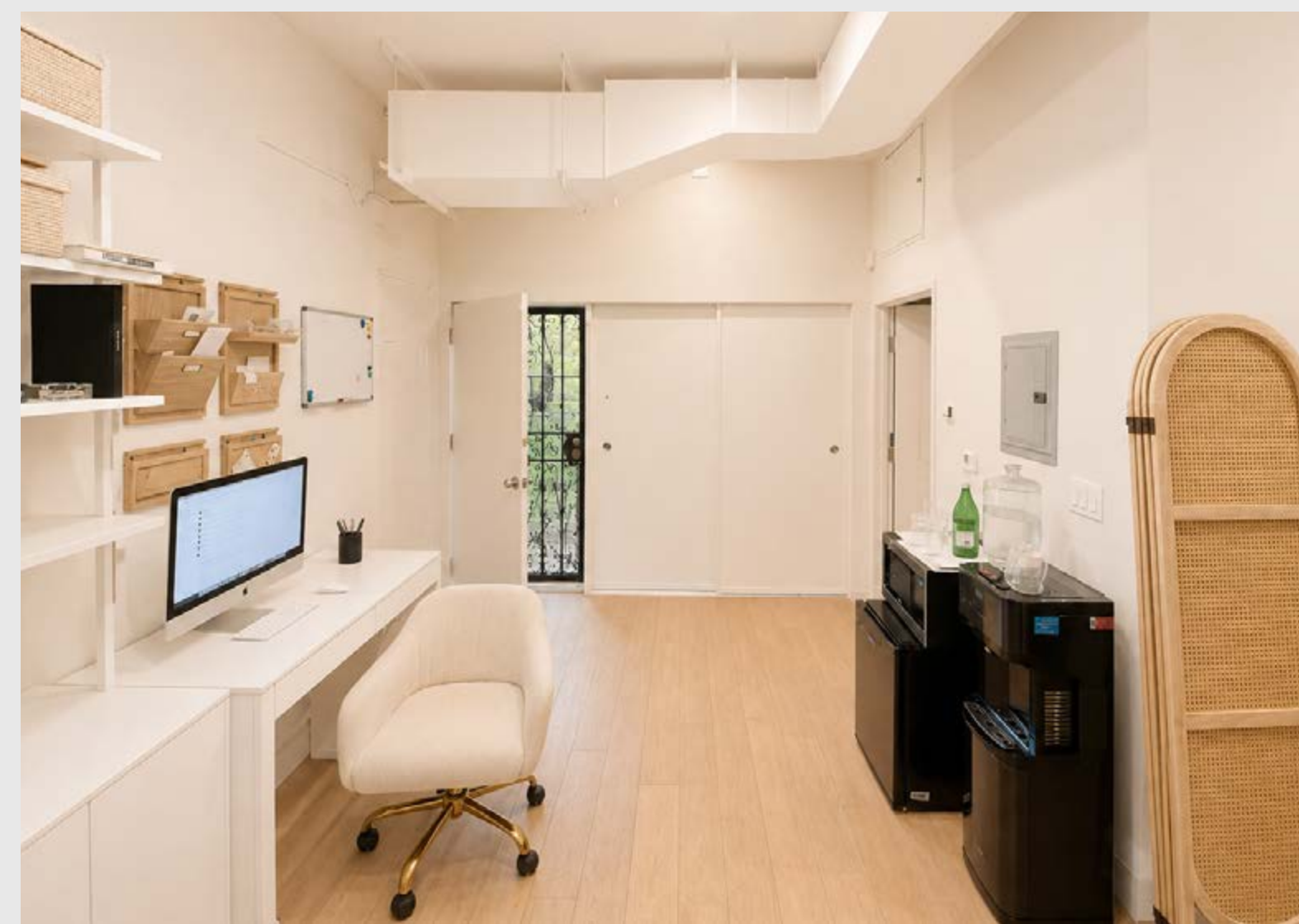


interior
space



1205

Montana Avenue
Santa Monica





1205

Montana Avenue

± 850 SF
size available

Retail
space type

Immediate
availability

Negotiable
lease term / lease rate

[contact the leasing team](#)

Downtown Santa Monica
5 Minute Drive Time

Malibu
18 Minute Drive Time

Pacific Palisades
12 Minute Drive Time

1205
Montana Avenue
Santa Monica

11th Street

MONTANA AVENUE

12TH STREET

PAVILIONS

Starbucks fōnuts

PRIMO PASSO
COFFEE ROASTERS

SUGARED
+
BRONZED
Caffe & Luxe
ROSTI

THE
SHADE
STORE

HYDRATION ROOM
IV AND INJECTION THERAPY

Sofa W Love
Since 1971 • Factory Direct Custom
Furniture • Delectable Nationality

rori's
Estell
Boutique
B&T'S DELI

kreation
ORGANIC

restore
HYPER WELLNESS

Zibby

gget
JILL
ROBERTS

JOHN KELLY
CHOCOLATES

ENGEL & VÖLKERS

FARROW & BALL

FATHER'S OFFICE

FACE
GYM.

EFFACÉ
AESTHETICS

NAKED
CASHMERE

STRETCH LAB

Locanda Portofino

AVOCADO

mochidoki
IMAGINATION IN EVERY BITE

britebar

(the)
Courtyard
Kitchen

1205

Montana Avenue
Santa Monica

MIGHTY drybar
PILATES
bluemercury ACME 5
PAPER SOURCE
McCALL'S MEAT & FISH CO.
LaLaLand

Century City
20 Minute Drive Time

WHOLE FOODS MARKET
sweetgreen

Hästens Since 1852
sugaring LA
LOVESAC
Designed for Life Furniture Co.

Peets Coffee & Tea
PRIMA CANTINA & TACOS

goodies
CHARLESTON SHOE CO.

R+D KITCHEN

the detox market

mochidoki
IMAGINATION IN EVERY BITE

(the) Courtyard Kitchen

NAKED CASHMERE

ENGEL&VÖLKERS

Zibby

JOHN KELLY CHOCOLATES

EFFACE AESTHETICS

MONTANA AVENUE

Tabb & Sparks

11TH STREET

Downtown Los Angeles

Providence
PROVIDENCE SAINT JOHN'S HEALTH CENTER
266 Beds

AVOCADO

Locanda Portofino

Bottled Poetry
Fine Wine & Spirits

Walgreens

TARGET

UCLA Health
UCLA SANTA MONICA MEDICAL CENTER
281 Beds

SANTA MONICA MEDICAL PLAZA

VONS RITE AID

ULTA BEAUTY

Wilshire Boulevard

FACE GYM.

STRETCHLAB

FATHER'S OFFICE

restore
HYPER WELLNESS

DIVINE VINTAGE

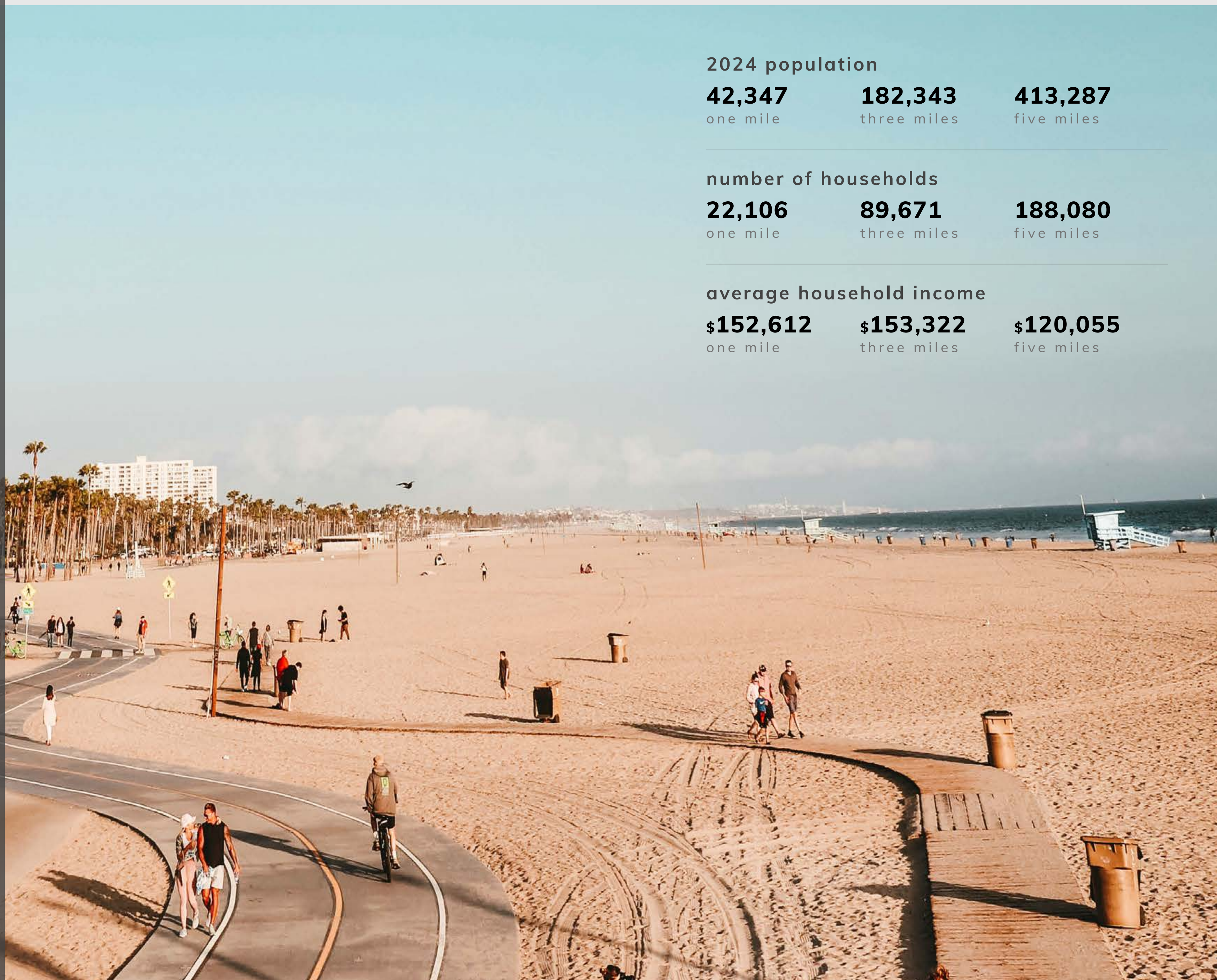
Kreation ORGANIC

the market

santa monica, california

Santa Monica is a beachside city of 8.3 square miles on the affluent west side of Los Angeles County. Offering an environment of unparalleled natural beauty, the city is home to a mix of residential communities, commercial districts, and recreational venues. Recently named by National Geographic as one of the Top “10 Beach Cities in the World” and by TIME as one of the “Best Places to Live”, Santa Monica features exceptional amenities, along with three miles of world-famous Pacific beaches and the Santa Monica Pier. Santa Monica’s residential population is approximately 93,000, increasing to an estimated 250,000 during the day with tourists, shoppers, and employees. Tourism attracts over 8 million visitors annually. The City of Santa Monica is a national leader in environmental, economic and social sustainability with bike share, city bus and the metro light rail line easing transit.

1205
Montana Avenue
Santa Monica



2024 population

42,347

one mile

182,343

three miles

413,287

five miles

number of households

22,106

one mile

89,671

three miles

188,080

five miles

average household income

\$152,612

one mile

\$153,322

three miles

\$120,055

five miles

Leasing Team

(424) 363-7800

Josh Dembo

Associate | Leasing

jdembo@pegasusam.com // LIC # 02242456 (CA)

Andrew Cohen

Executive Vice President | Leasing

acohen@pegasusam.com // LIC # 01996379 (CA)

Emmet Pierson

Senior Associate | Leasing

epierson@pegasusam.com // LIC # 02048600 (CA)



Pegasus Asset Management Inc.

1901 Avenue of the Stars, Suite 630

Los Angeles, CA 90067

(310) 691-1350

CA DRE LIC # 02119442

www.pegasusam.com

1205

Montana Avenue
Santa Monica



Confidentiality & Disclaimer Statement

The information contained in this Leasing Package is proprietary and strictly confidential. It is intended to be reviewed only by the party receiving it from Pegasus Investments and should not be made available to any other person or entity without the written consent of Pegasus Investments. This Leasing Package has been prepared to provide summary, unverified information to prospective purchasers, and to establish only a preliminary level of interest in the subject property.

The information contained herein is not a substitute for a thorough due diligence investigation. Pegasus Investments has not made any investigation, and makes no warranty or representation, with respect to the income or expenses for the subject property, the future projected financial performance of the property, the size and square footage of the property and improvements, the presence or absence of contaminating substances, PCB's or asbestos, the compliance with State and Federal regulations, the physical condition of the improvements thereon, or the financial condition of the business prospects of any tenants, or any tenant's plans or intentions to continue its occupancy of the subject property.

The information contained in this Leasing Package has been obtained from sources we believe to be reliable; however, Pegasus Investments has not verified, and will not verify, any of the information contained herein, nor has Pegasus Investments conducted any investigation regarding these matters and makes no warranty or representation whatsoever regarding the accuracy or completeness of the information provided. Some or all of the photographs contained within may have been altered from their original format. All potential buyers must take appropriate measures to verify all of the information set forth herein.