

FOR LEASE

STOREY BLDG. 221

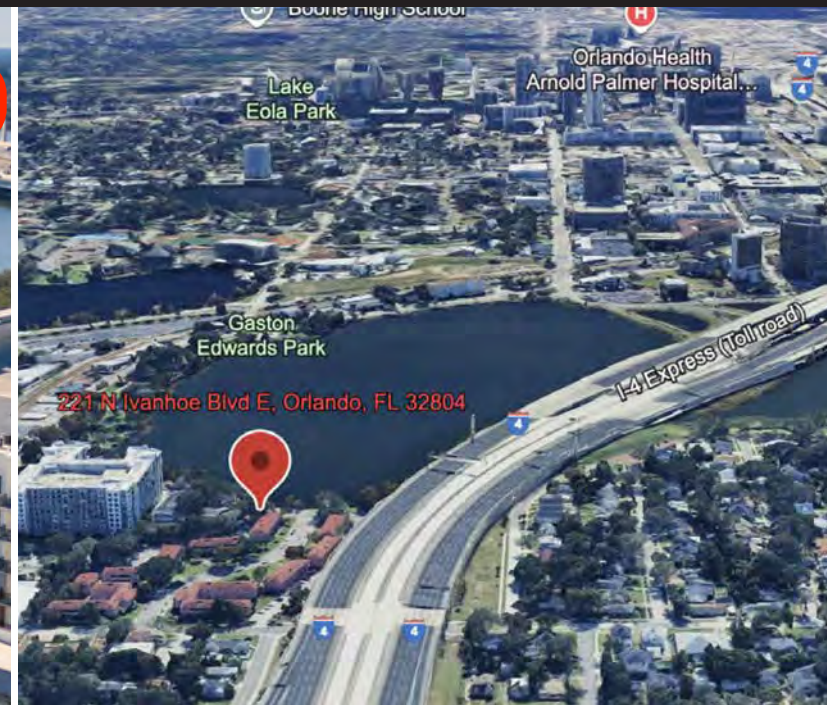
O'Hara
LAW GROUP

WorldView
JCRE

Storey
LABORERS

OFFICE SPACE AVAILABLE

221 NE Ivanhoe Blvd, Orlando, FL 32804



PROPERTY OVERVIEW

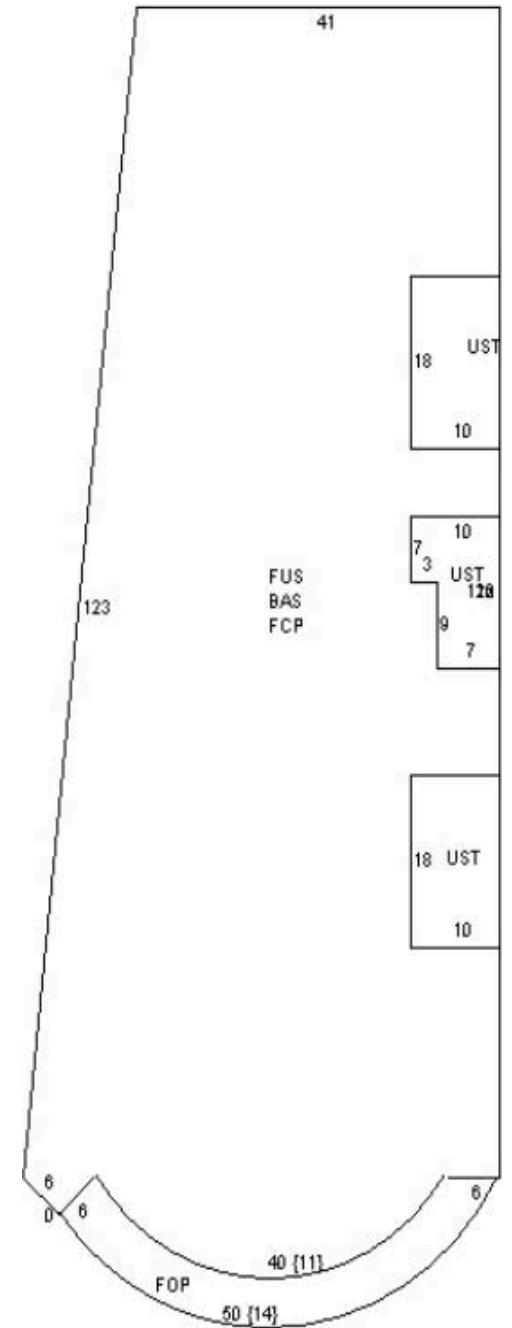
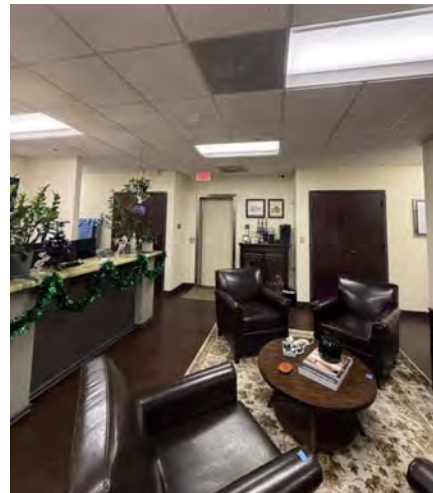
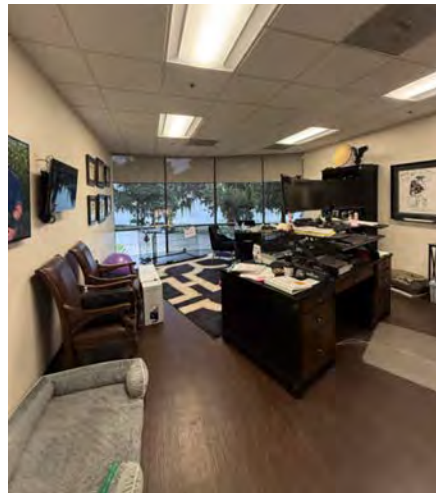
Embark on a leasing opportunity at 221 NE Ivanhoe Blvd, where modernity meets functionality. This property presents a versatile office space with high visibility, showcasing a contemporary design and a customizable layout tailored to your exact needs. Boasting ample parking options and a prestigious address, it's primed to elevate your business presence. From its striking curb appeal to the thoughtfully designed interior, every detail exudes professionalism and inspires productivity. Ideal for hosting clients and business meetings, this space provides the perfect canvas for your professional aspirations. Experience the pinnacle of commercial excellence at 221 NE Ivanhoe Blvd, Orlando. Suite #200 consisting of 5,712 Square Feet available for lease.

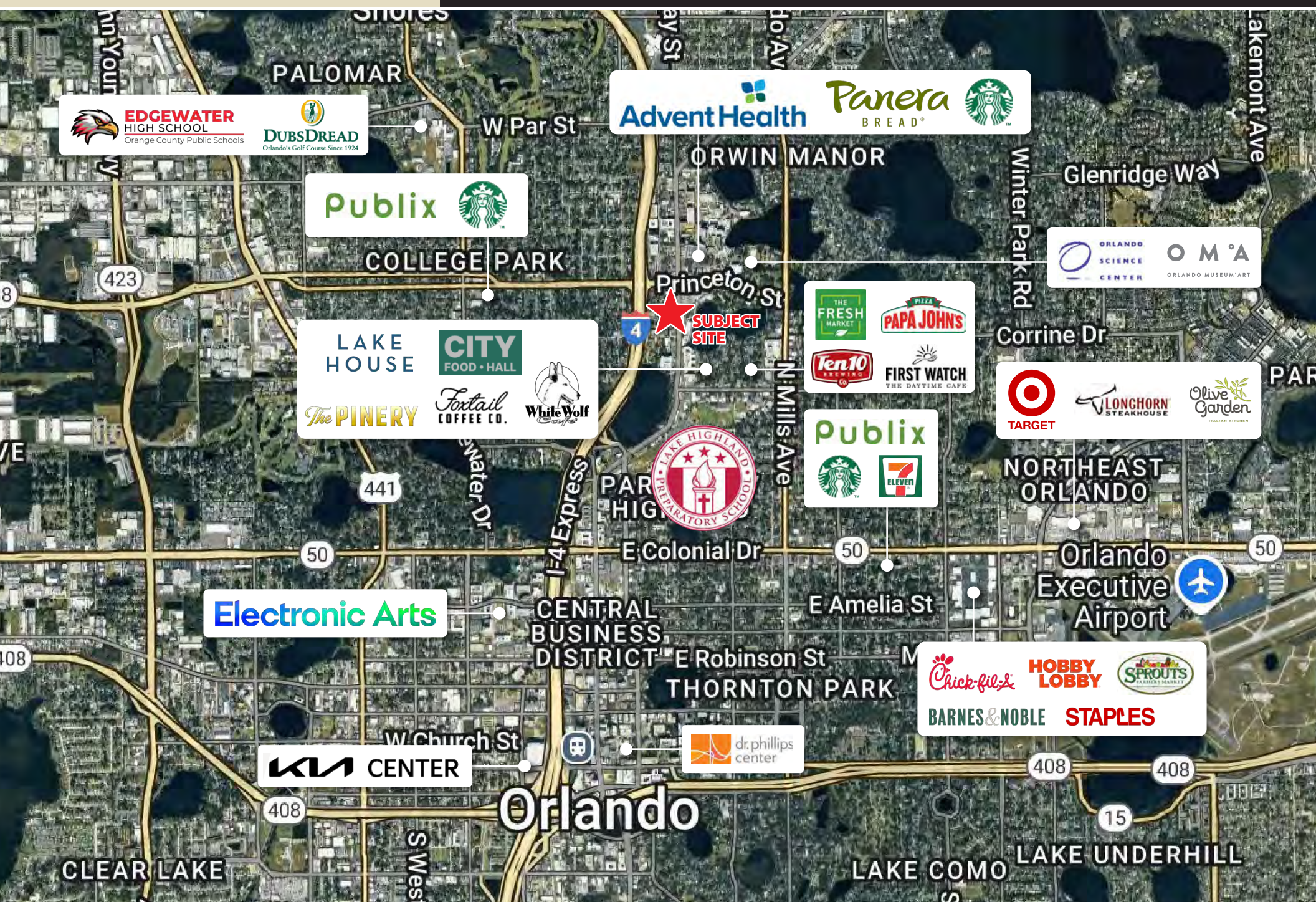
PROPERTY HIGHLIGHTS

- 5,712 SF Lakeview Office Space For Lease
- 15 Offices
- 2 Conference Rooms
- Private Elevator
- 2 Private Restrooms
- Spacious and customizable layout

OFFERING SUMMARY

Lease Rate:	Negotiable
Building Size:	11,256 SF
Available SF:	2,856 - 5,712 SF
Lot Size:	0.38 Acres
Year Built:	1986
Zoning:	MU-2/T/SP
Market:	Orlando
Submarket:	Ivanhoe Village





DEMOGRAPHIC DATA

	1 MILE	3 MILES	5 MILES
POPULATION			
Total Population	11,896	95,469	293,220
Average Age	39	42	41
Average Age (Male)	39	41	40
Average Age (Female)	39	43	42
HOUSEHOLD & INCOME			
Total Households	6,399	46,881	125,189
Persons per HH	1.9	2	2.3
Average HH Income	\$132,466	\$129,506	\$102,978
Average House Value	\$561,712	\$608,924	\$463,105
Per Capita Income	\$69,718	\$64,753	\$44,773

