



CALTHORPE
STUDIOS

Where period charm meets modern flexibility
YOUR PREMIER SERVICED OFFICE ADDRESS



Discover Calthorpe Studios,
a beautifully crafted heritage
workspace nestled in the
heart of Edgbaston.

A WORKPLACE TO INSPIRE

Located within the prestigious Calthorpe Estate, our serviced offices create an environment where your business can flourish and thrive.

Whether you're a small startup or an established business, our flexible office solutions have been designed to meet your unique needs. With beautifully restored spaces, high-speed connectivity, and a thriving business community, Calthorpe Studios offers more than just an office – it's a place where ideas and businesses grow.

Key features:



All inclusive



Plug 'N' Play



High Speed
Internet



Dog Friendly



24/7 Access



Estate CCTV



Calthorpe Studios offers 16 thoughtfully designed office suites, suitable for single occupiers to teams of four, providing an ideal environment for small businesses and startups to thrive. Our multi-purpose spaces come with flexible lease terms and furnished options, tailored to meet your specific needs. Each suite is flooded with natural light and showcases original period details, adding distinctive character to your workspace.

Enjoy elegant bathrooms on every floor, a convenient shower room, and secure key fob entry, ensuring your team benefits from both style and functionality. Whether you're looking for a collaborative environment or a private, focused space, Calthorpe Studios seamlessly blends heritage charm with modern amenities.

Combine period elegance
with modern convenience at
Calthorpe Studios.

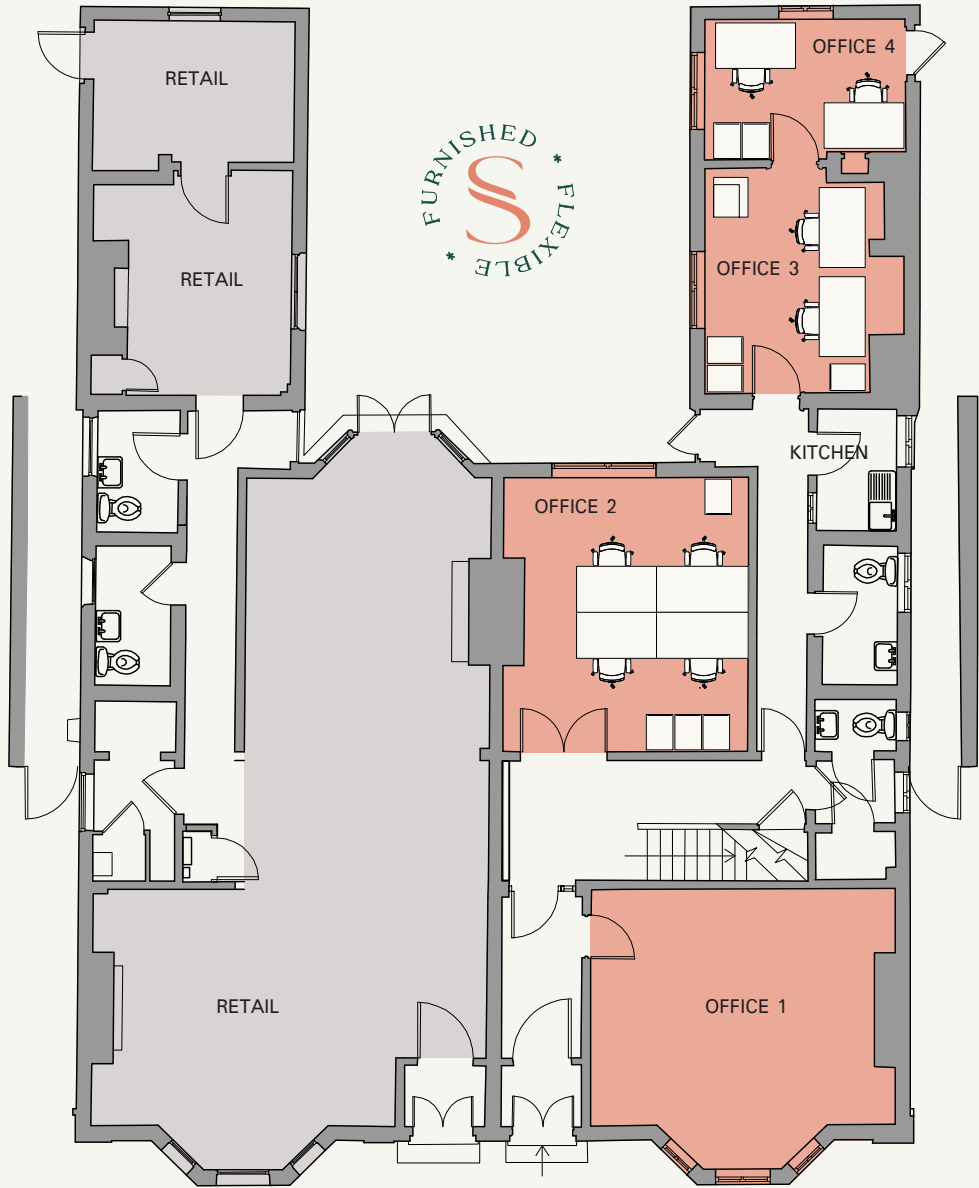


READY FOR BUSINESS

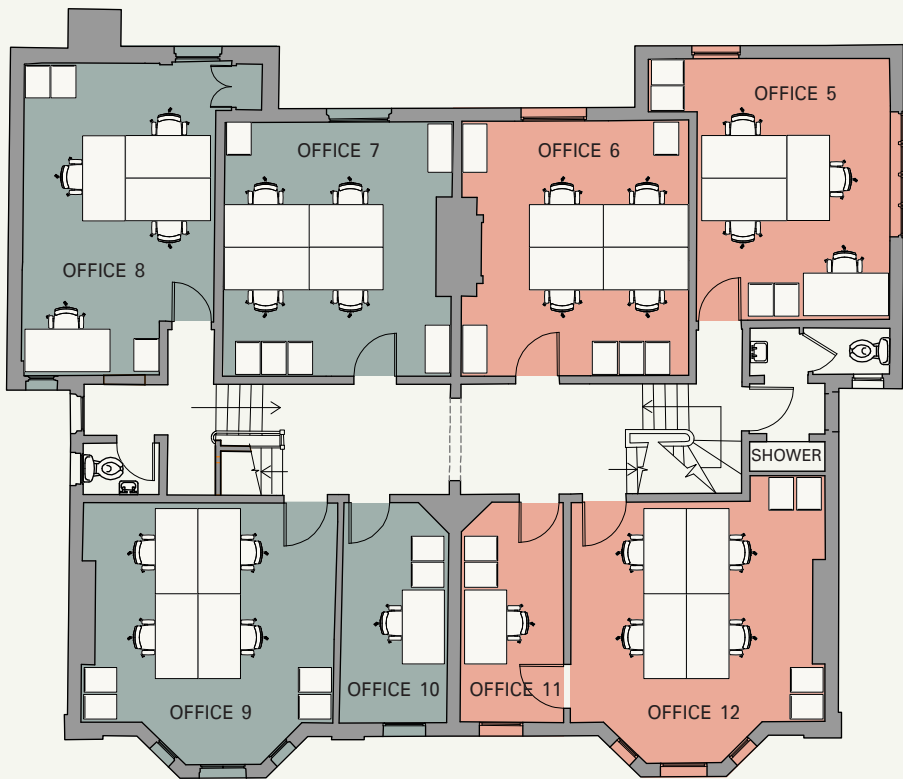
Our office suites have been designed for individual occupiers and teams of up to four. Complemented by communal kitchen facilities, each suite blends period charm with modern amenities, creating an inspiring workspace tailored to support your growth.

Space	Availability
● Office 1	Let
● Office 2	Let
● Office 3	Let
● Office 4	Let

Ground Floor



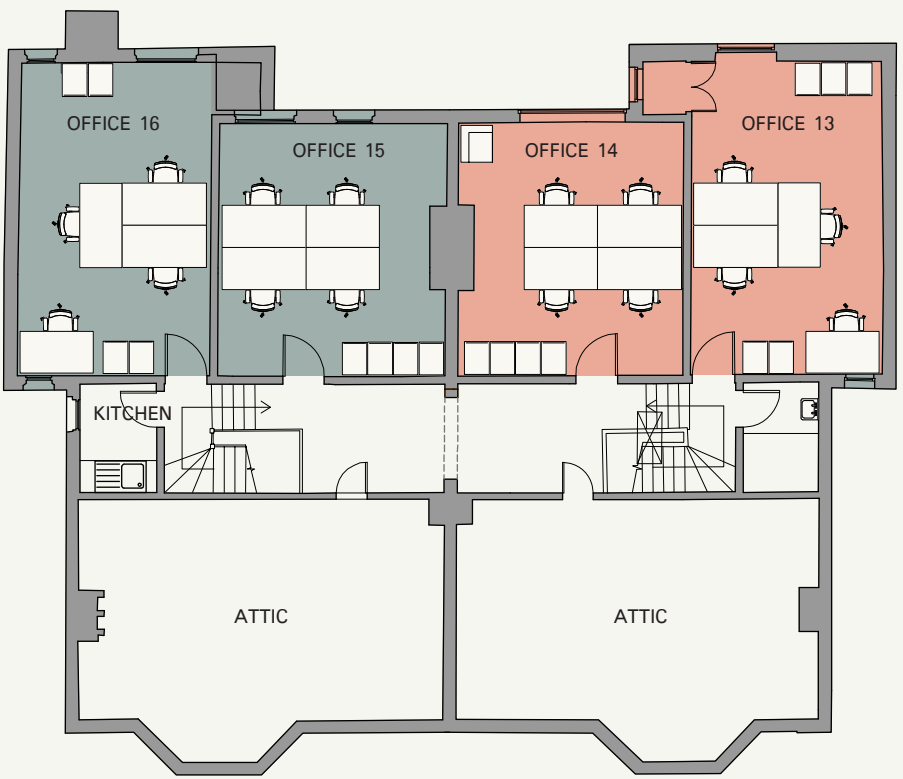
First Floor



Space	Availability
● Office 5	Let
● Office 6	Let
● Office 7	Available
● Office 8	Available

Space	Availability
● Office 9	Available
● Office 10	Available
● Office 11	Let
● Office 12	Let

Second Floor



Space	Availability
● Office 13	Let
● Office 14	Let
● Office 15	Available
● Office 16	Available

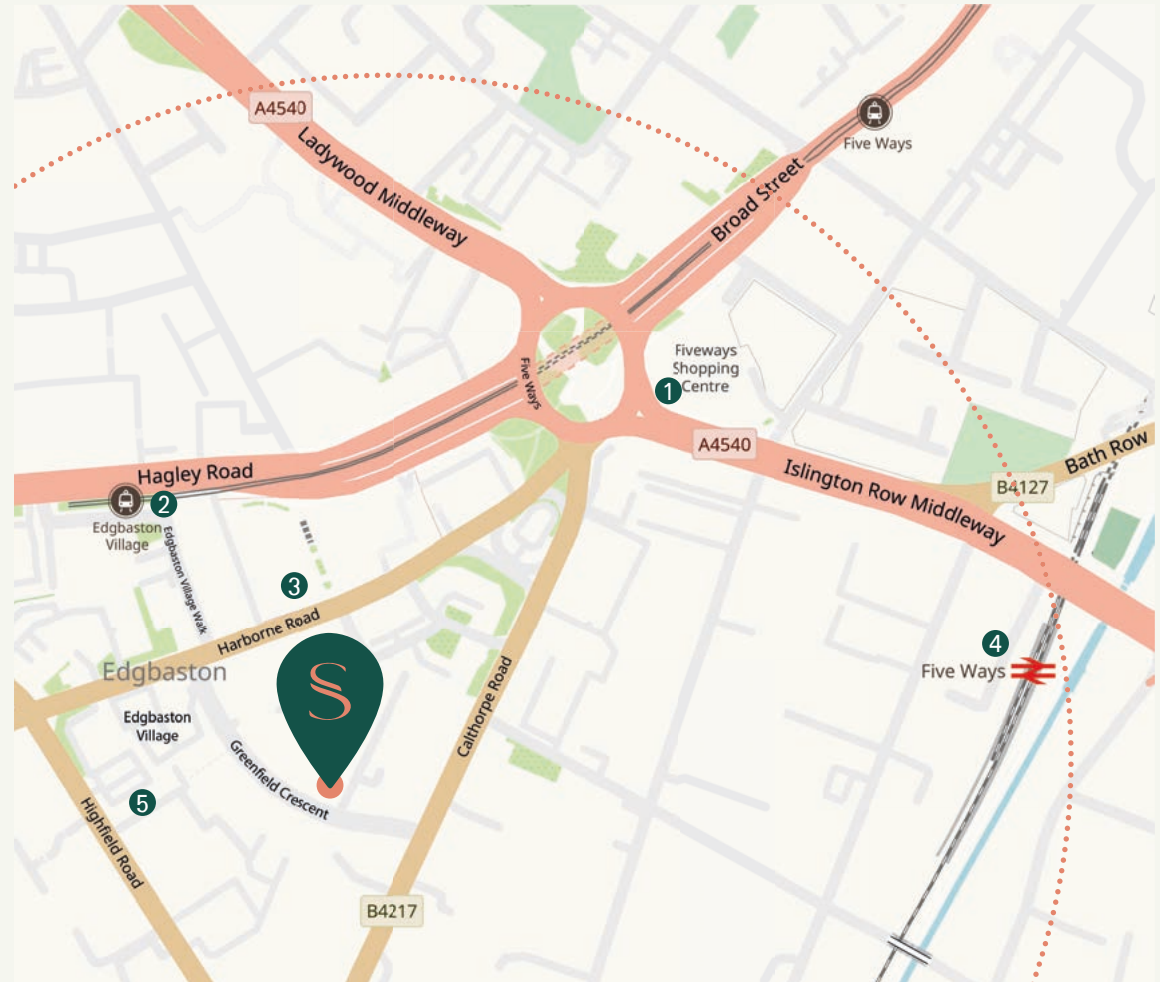


A THRIVING DESTINATION

Greenfield Crescent, Edgbaston, Birmingham, B15 3BE

Just a mile from the city centre, Calthorpe Studios is the ideal office location for your business. Positioned just outside the Clean Air Zone, it's a short walk to Five Ways Station and the Edgbaston Village Metro stop, ensuring excellent connectivity to Birmingham city centre and beyond.

You'll also find a vibrant mix of leisure and lifestyle amenities within walking distance, including the Michelin-starred Simpsons, award-winning wine at Loki and award-winning dining at Chapter, the popular pizzeria Smoke + Ash, Boston Tea Party, and the picturesque Birmingham Botanical Gardens.



Key

1. Park Regis Hotel 2. WM Midland Metro 3. Morrisons 4. Five Ways train station 5. Edgbaston Village
- 15 minute walk or 4 minute drive radius



GET IN TOUCH

For all enquires or to book a viewing please contact Emma Cullinan

ecullinan@calthorpe.co.uk

0121 248 7676