

# SEMINOLE RETAIL STRIP CENTER

9025 - 9097 Park Boulevard | Seminole, FL 33777

[CLICK FOR VR TOUR](#)

FOR LEASE



## PROPERTY OVERVIEW

- » **AVAILABLE:** 1,000 SF | 1,050 SF | 2,000 SF
- » **3 FREE months rent** if lease executed by June 30, 2026
- » Features pylon signage, multiple access points, and 30 parking spaces
- » Located along Park Boulevard with an impressive average daily traffic count of 52,000 VPD, the property offers outstanding visibility

## DEMOGRAPHICS

	1 Mile	3 Mile	5 Mile
Population	9,975	90,976	247,351
Households	4,274	41,660	114,021
Avg. HH Income	\$130,613	\$110,288	\$108,599

## TRAFFIC COUNTS AADT

Park Boulevard	52,000 AADT
Starkey Road	29,000 AADT
Seminole Boulevard	41,000 AADT



LICENSED REAL ESTATE BROKER  
BROKER OF RECORD: DARRON KATTAN, #BK3256503  
DARRON.KATTAN@FRANKLINST.COM

ALEX WRIGHT  
MANAGING DIRECTOR

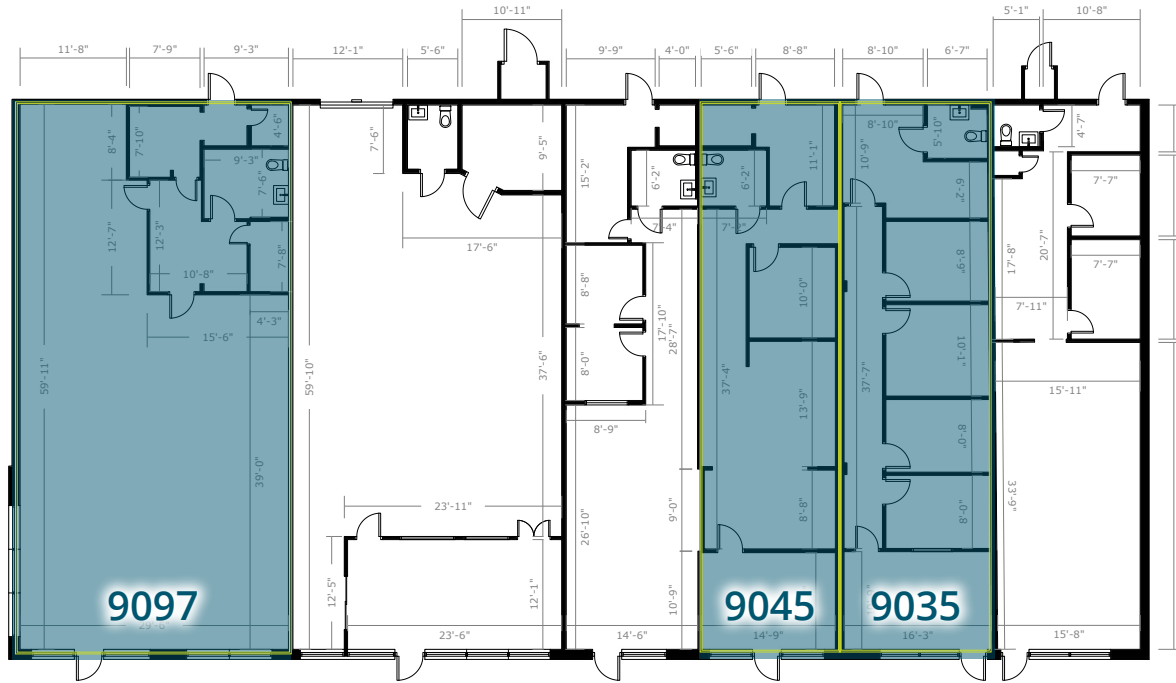
813.682.6135  
Alex.Wright@FranklinSt.com

BRONWYN EYEINGTON  
ASSOCIATE DIRECTOR

813.577.3830  
Bronwyn.Eyeington@FranklinSt.com

# SEMINOLE RETAIL STRIP CENTER | 9025 - 9097 Park Boulevard

## FLOOR PLAN



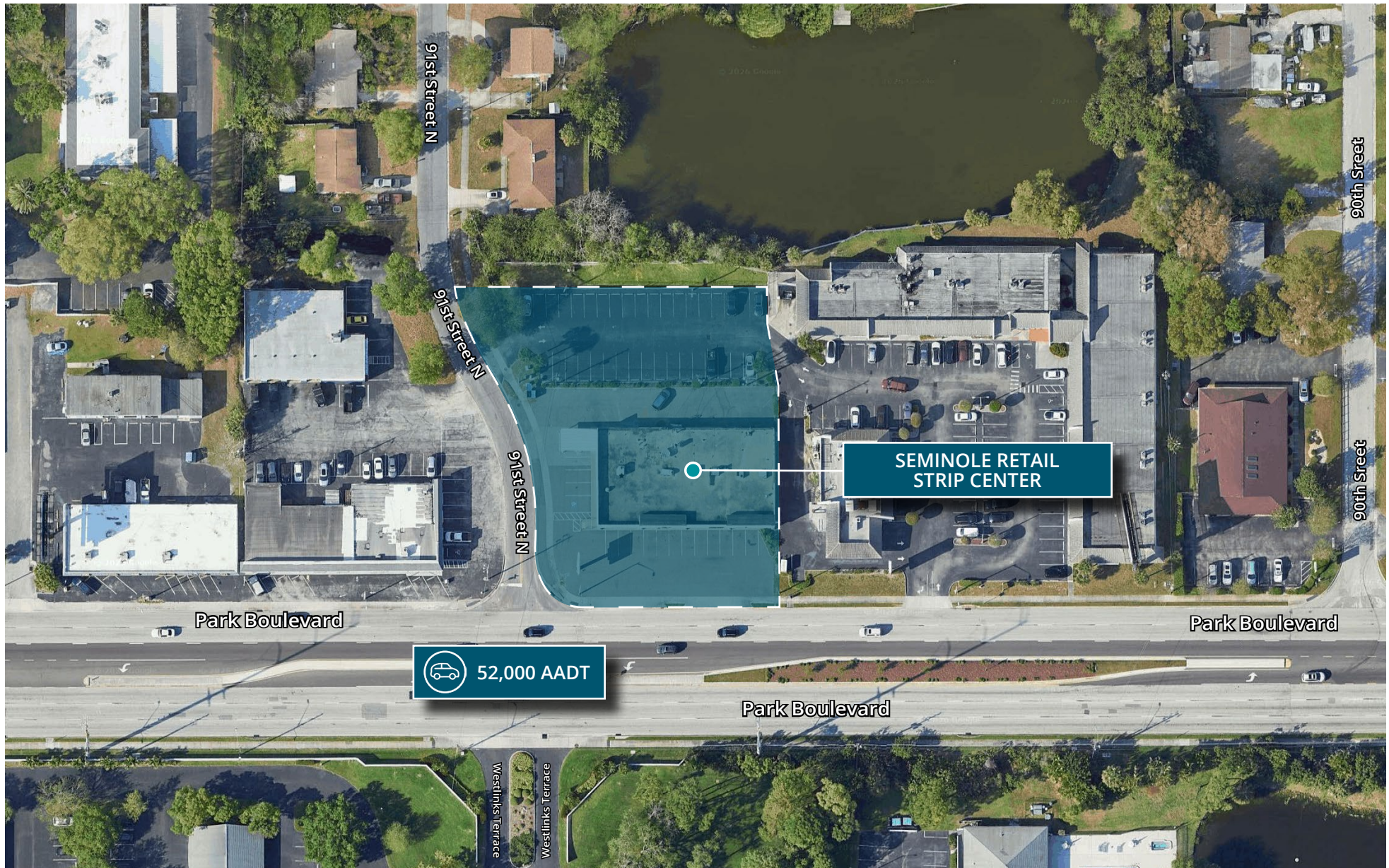
[CLICK FOR VR TOUR](#)

9025	Buzz & Brew Barber	1,000 SF
9035	AVAILABLE	1,050 SF
9045	AVAILABLE	1,000 SF
9065	Nail Boulevard	1,000 SF
9075	Dry Cleaners	1,950 SF
9097	AVAILABLE	2,000 SF



# SEMINOLE RETAIL STRIP CENTER | 9025 - 9097 Park Boulevard

## RETAIL AERIAL



# SEMINOLE RETAIL STRIP CENTER | 9025 - 9097 Park Boulevard

## MARKET AERIAL

