

PALATINE, IL 60067



BUILDING SIZE:	6,549 SF
SITE SIZE:	0.34 acres
YEAR BUILT / RENOVATED:	1974 2011
ZONED:	M, Palatine
PARKING:	26 car parking spaces (expandable)
TAXES:	\$14,775.89 (2023) PIN: 02-15-110-004
LEASE RATE:	Subject to Offer
SALE PRICE:	\$700,000
COMMENTS:	<ul style="list-style-type: none">› Owner financing available› Free-standing single-story office building› Walking distance to Downtown Palatine, Metra & Restaurants› Divisible to 2 or 3 tenant building› Includes 16 private offices, kitchen, conference room, reception and built-in cubes

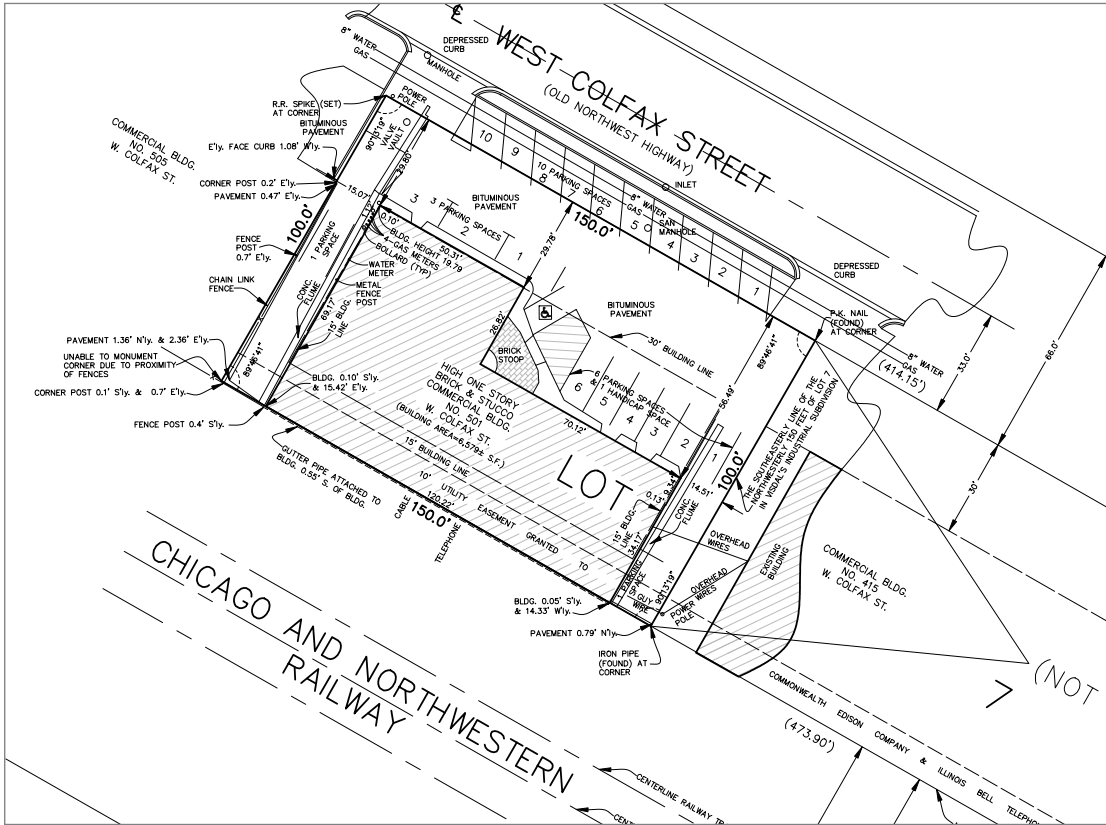


All information furnished regarding property for sale, rental or financing is from sources deemed reliable, but no warranty or representation is made to the accuracy thereof and same is submitted to errors, omissions, change of price, rental or other conditions prior to sale, lease or financing or withdrawal without notice. No liability of any kind is to be imposed on the broker herein.

AVAILABLE FOR SALE / LEASE

501 W. COLFAX STREET

PALATINE, IL 60067



Todd Hendricks
Senior Vice President
thendricks@lee-associates.com
D 773.355.3025

All information furnished regarding property for sale, rental or financing is from sources deemed reliable, but no warranty or representation is made to the accuracy thereof and same is submitted to errors, omissions, change of price, rental or other conditions prior to sale, lease or financing or withdrawal without notice. No liability of any kind is to be imposed on the broker herein.