

LAND FOR SALE

Two Fully improved outlots
Retail or Restaurant

**ALL QUICK-CLOSE CASH
OFFERS WILL BE CONSIDERED!**



PROPERTY SPECIFICATIONS

Description: Pad Ready Fully Developed

Land Size: Lot 9: 41,231 SF (.95 AC)
Lot 11: 41,274 SF (.95 AC)

Topography: Flat

Environmental Status: Phase 1 Available

Utilities: To Site

Sewer/Water: Village

Frontage Dimensions: Lot 9: 252'
Lot 11: 119'

Zoning: B-2 PUD

Real Estate Taxes: Lot 9: \$7,285 (2025)
Lot 11: \$6,557 (2025)

Sale Price: Lot 9: ~~\$18.00~~ ~~\$14.00~~ ~~\$10.00~~ PSF
Lot 11: ~~\$18.00~~ ~~\$14.00~~ ~~\$10.00~~ PSF
**ALL OFFERS WILL
BE CONSIDERED!**

PROPERTY OVERVIEW

Fully Improved Lots Restaurant/Retail/Showroom

- Signalized intersection of Randall Rd & Corporate Pkwy
- Fully developed lots with curbing, parking lot, lighting, landscaping and off-site detention
- Lot 11 fronts Randall Road
- Across the street from the new Portillo's and Cooper's Hawk!
- The Esplanade is part of the 1,000 acre Algonquin Corporate Campus
- Located just south of Algonquin Commons, a 600,000 SF Lifestyle Center anchored by Trader Joe's, Barnes & Nobles, Nordstrom Rack and Dick's Sporting Goods. Algonquin Commons is currently undergoing a \$30M renovation
- Adjacent Lots 2 & 10 also available, call broker for details
- PINs: (Lot 9) 03-06-427-021
(Lot 11) 03-06-427-013

LINDA KOST

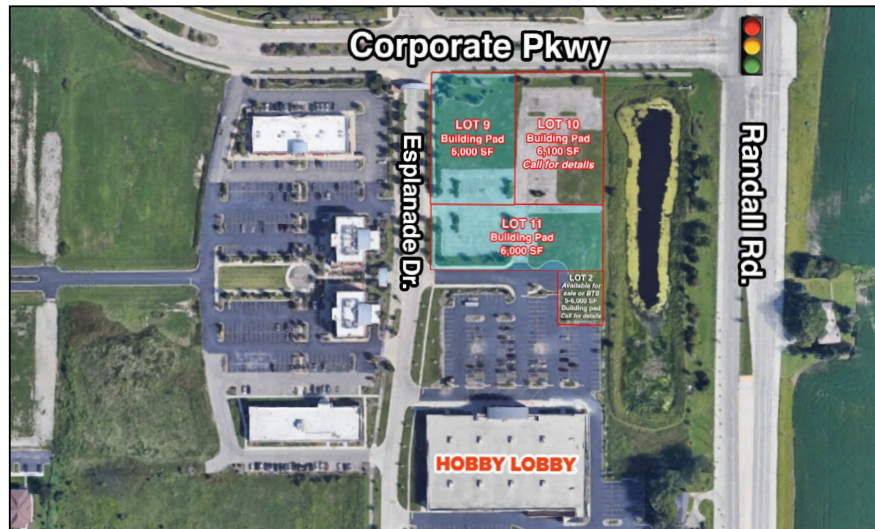
Senior Broker

847.910.8820

LKost@realtymetrix.com

Realty Metrix Commercial
2390 Esplanade Drive, Suite 201
Algonquin, IL 60102



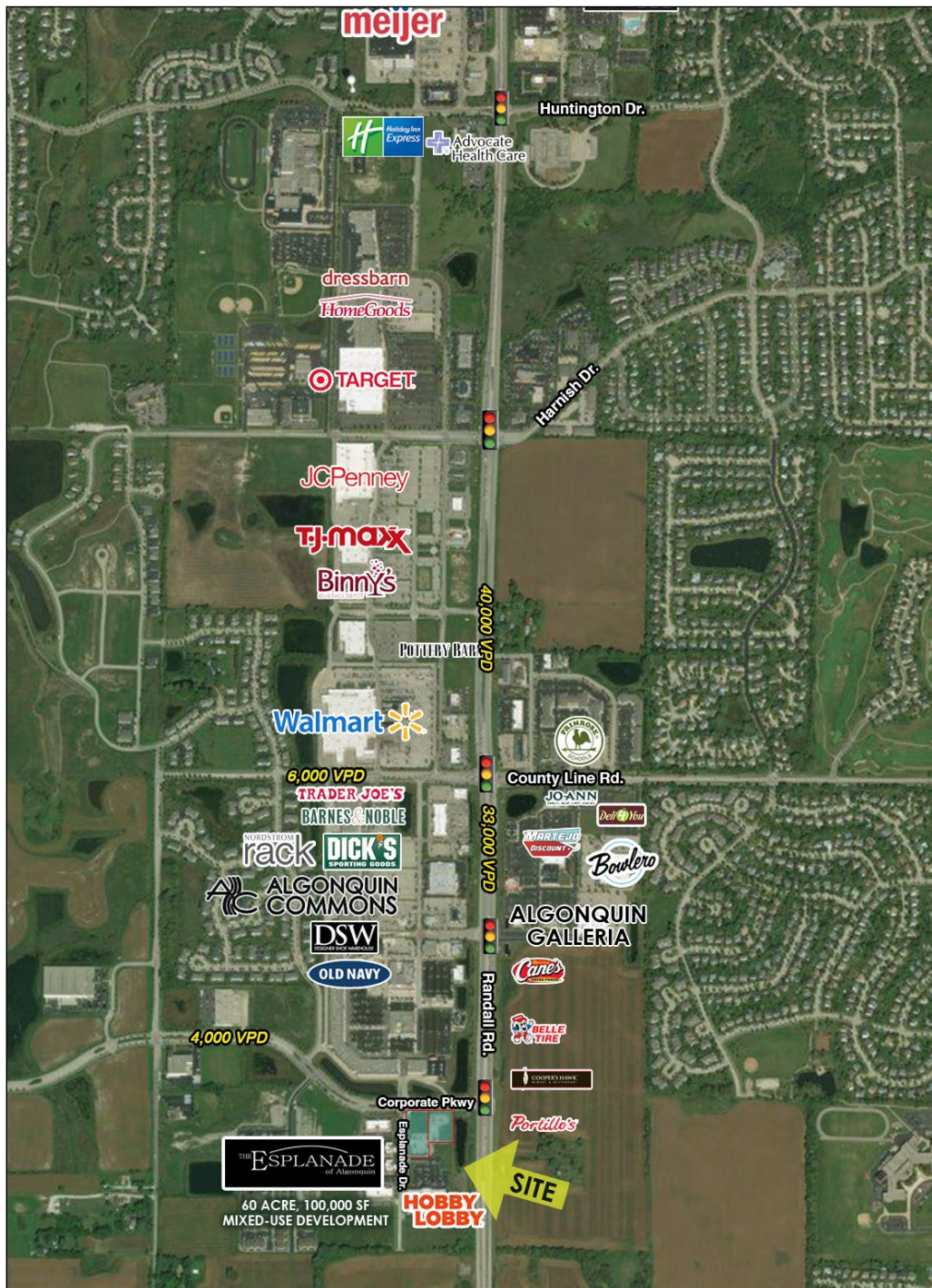


LINDA KOST
Senior Broker
847.910.8820
LKost@realtymetrix.com

Realty Metrix Commercial
2390 Esplanade Drive, Suite 201
Algonquin, IL 60102



GRID7
PROPERTIES



LINDA KOST
Senior Broker
847.910.8820
LKost@realtymetrix.com

Realty Metrix Commercial
2390 Esplanade Drive, Suite 201
Algonquin, IL 60102

