



Animal Avenue

2104 Boone Trail Road, Sanford, NC 27330



John Ramsperger
Sanford Real Estate
1101 S Horner Blvd, Sanford, NC 27330
john@sanfordhome.com
(919) 721-2200



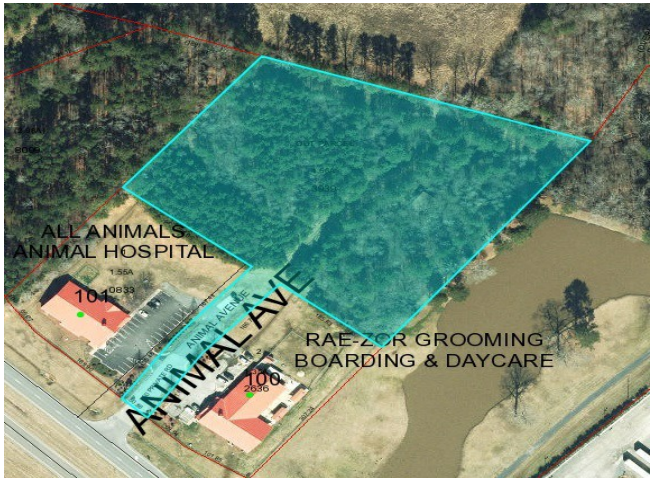
Animal Avenue

\$500,000

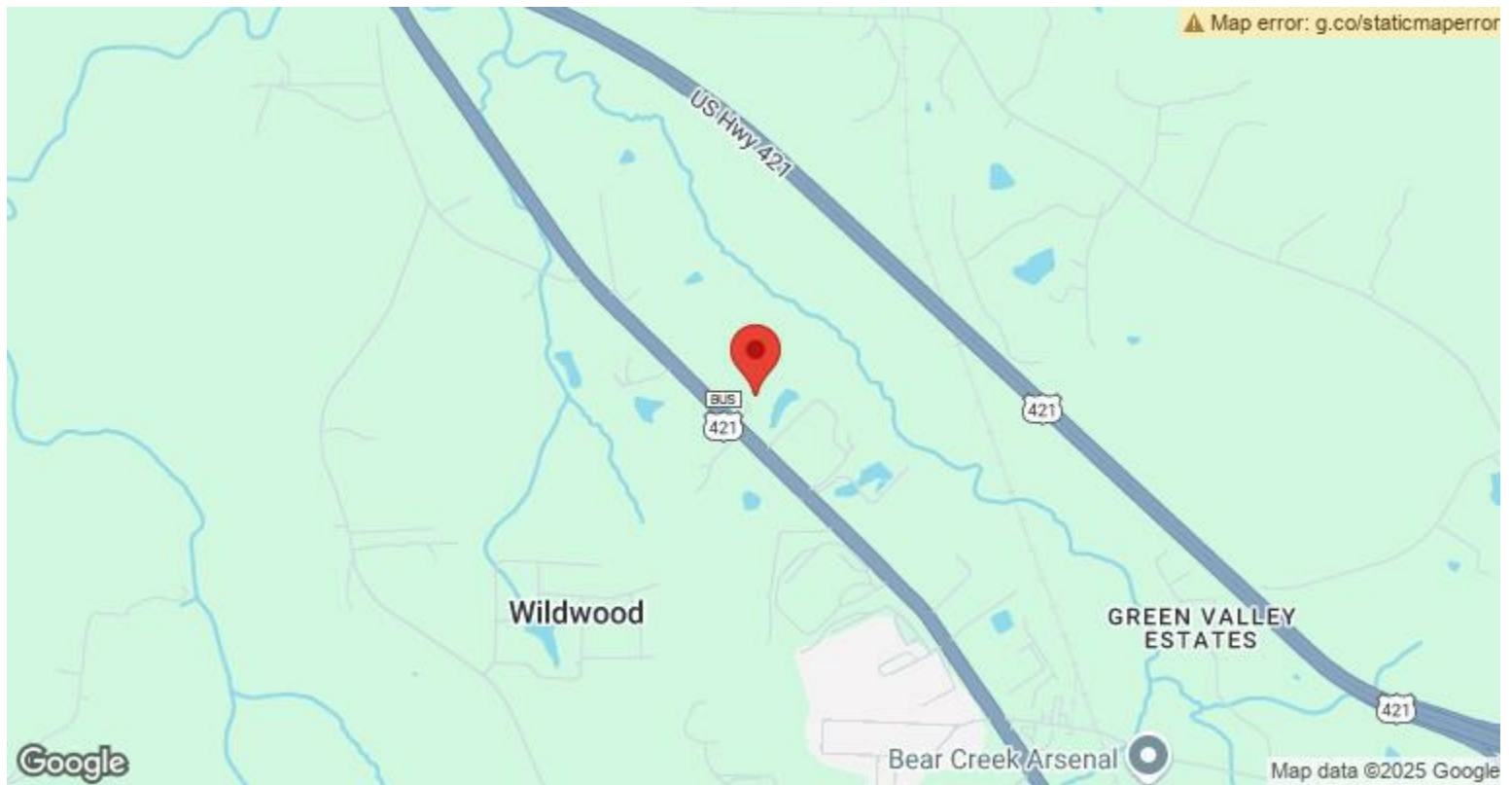
4.56 Acre commercial lot on US HWY 421 in Sanford. US 421 will become the new I-685 corridor. Located close to the Toyota Battery and Wolfspeed mega sites. Zoned C-2, General Commercial. Water and sewer are onsite. 44 miles SW of the Raleigh metro area. Fantastic opportunity to locate a business in rapidly growing Sanford, NC. Across the street is the future Brookshire development, which is a 167 acre mixed-use subdivision....

C-2 GENERAL COMMERCIAL DISTRICT
The "C-2" district is established to provide areas for general commercial activities designed to serve the community such as shopping centers, repair shops, wholesale businesses, and retail sales with limited outdoor display of goods and limited outdoor operations. This district promotes a broad range of commercial operations and services necessary for large regions of the...

- 4.56 Acres
- Zoned C-2 General Commercial
- US HWY 421



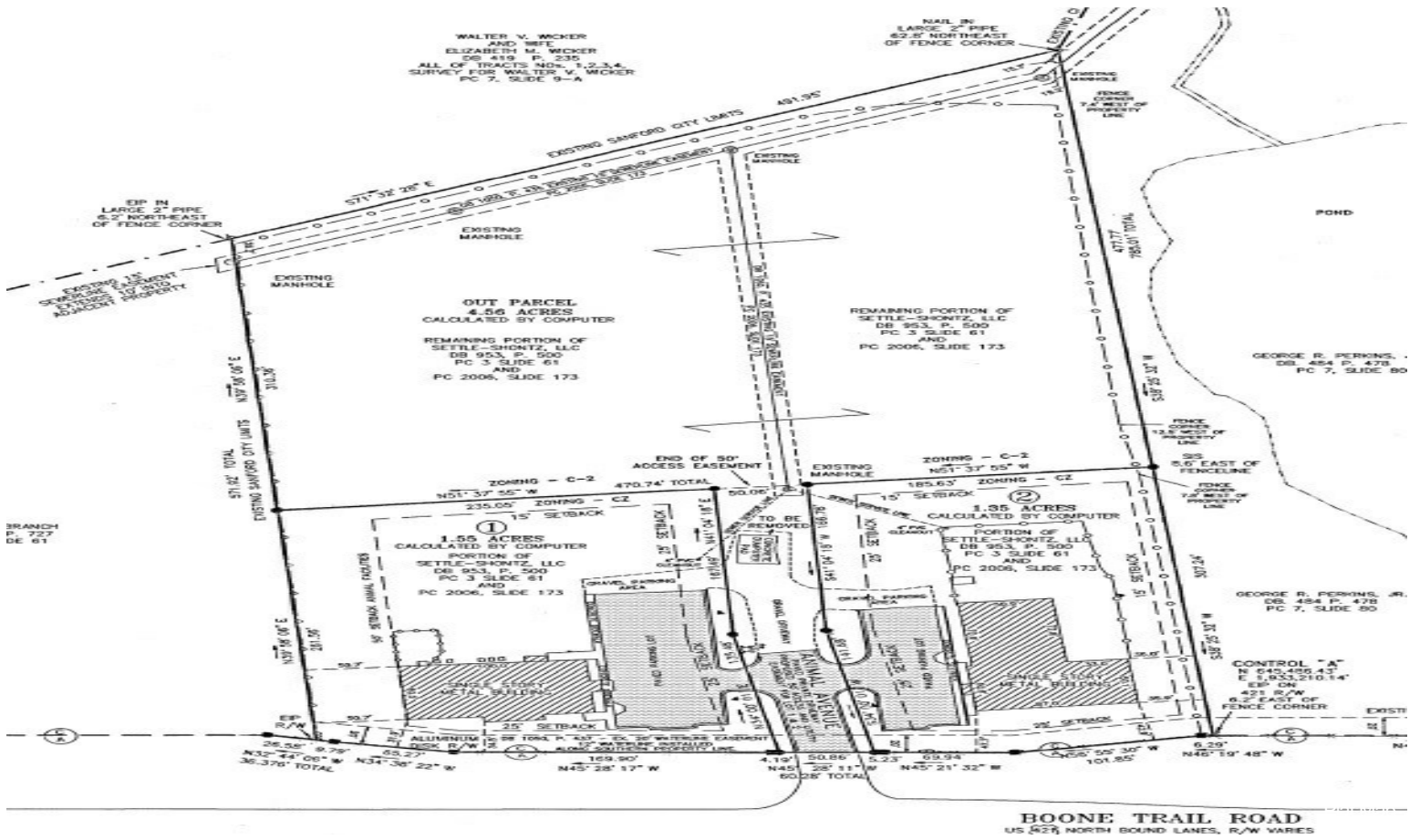
Price:	\$500,000
Property Type:	Land
Property Subtype:	Commercial
Proposed Use:	Commercial
Sale Type:	Investment or Owner User
Total Lot Size:	4.56 AC
No. Lots:	1
Zoning Description:	C-2
APN / Parcel ID:	9634-35-3939-00



2104 Boone Trail Road, Sanford, NC 27330

4.56 Acre commercial lot on US HWY 421 in Sanford. US 421 will become the new I-685 corridor. Located close to the Toyota Battery and Wolfspeed mega sites. Zoned C-2, General Commercial. Water and sewer are onsite. 44 miles SW of the Raleigh metro area. Fantastic opportunity to locate a business in rapidly growing Sanford, NC. Across the street is the future Brookshire development, which is a 167 acre mixed-use subdivision.

Property Photos



Property Photos



Property Photos



Property Photos



Property Photos



Property Photos

