

# 216

W. CHICAGO



exclusively leased by

**BA** BRADFORD  
ALLEN

210-216 W. Chicago Avenue, Chicago, IL



# 216

W. CHICAGO

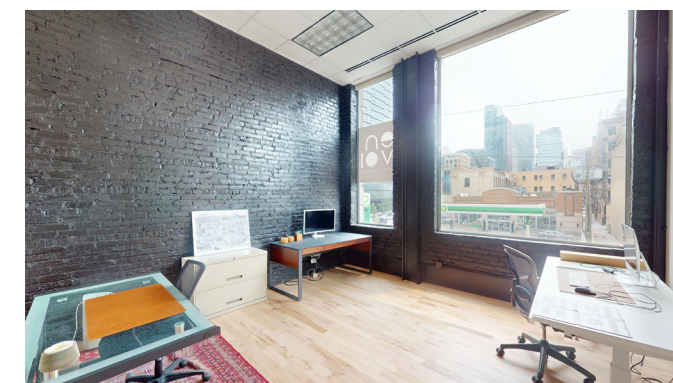
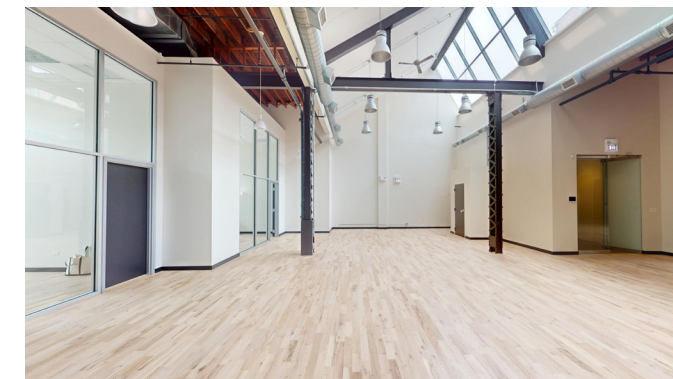
## BRIGHT RIVER NORTH LOFT OFFICE

- Top-floor boutique suite features large skylights and high ceilings, allowing for abundant natural light
- Suite can be demised down to 2,100 SF
- Oversized windows offer opportunities for branding and signage along Chicago Avenue
- Tenants have access to a freight elevator and 24/7 secure building entry

# 216

W. CHICAGO

## SECOND FLOOR LOFT SUITE



### SUITE B | 5,125 RSF

- Lofted top floor space with high ceilings
- Skylights provide ample light
- Three private restrooms
- Kitchenette
- Space can be demised down to 2,100 SF

VIRTUAL TOUR ►

216  
W. CHICAGO

ABUNDANT  
NATURAL LIGHT



# 216

W. CHICAGO

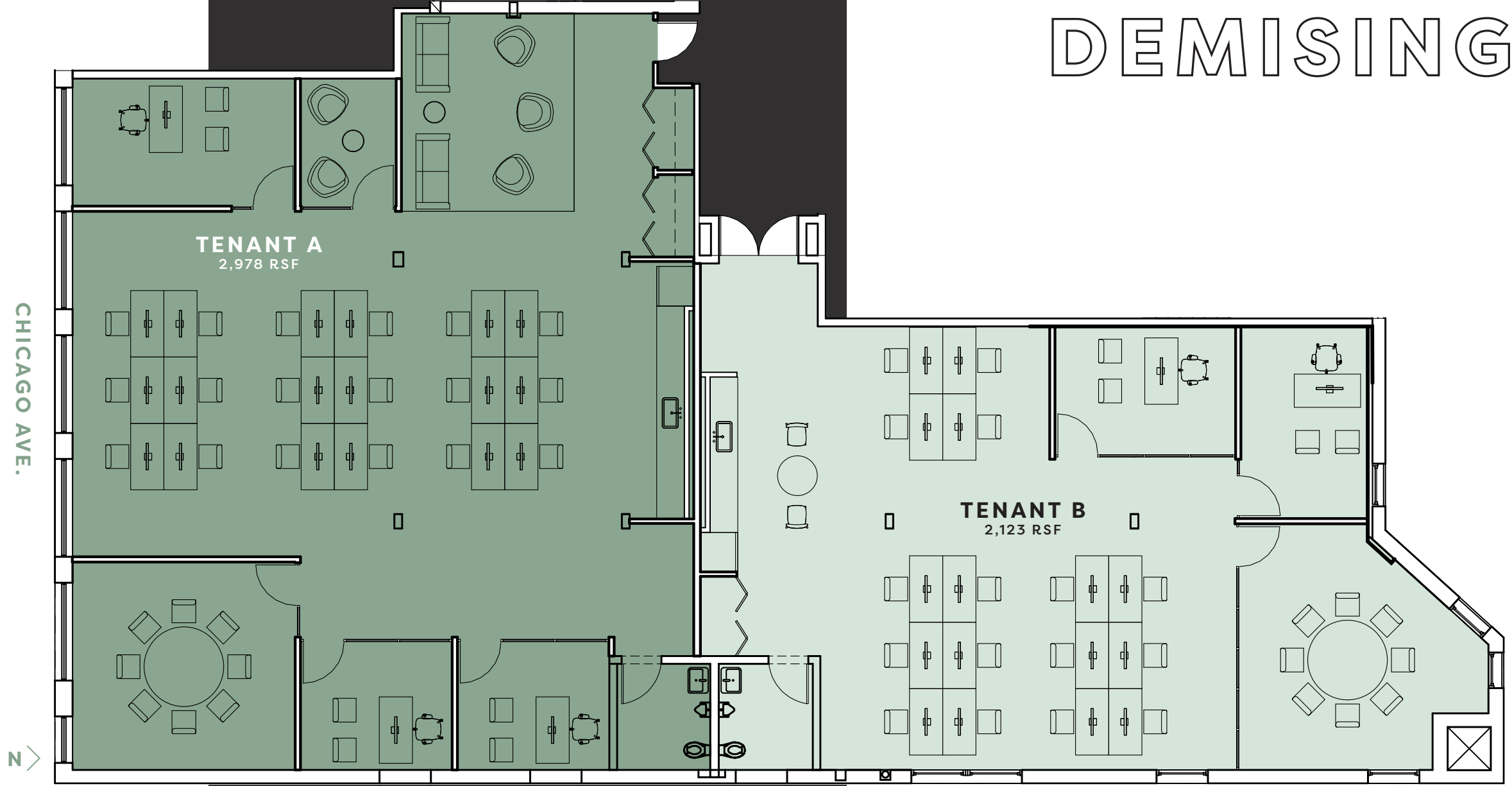
## TENANT A | 2,978 RSF

- 3 private offices
- 18 workstations
- Conference room
- Lounge
- Meeting pod
- Kitchenette
- Restroom

## TENANT B | 2,123 RSF

- 2 private offices
- 16 workstations
- Conference room
- Kitchenette
- Restroom

# CONCEPTUAL DEMISING

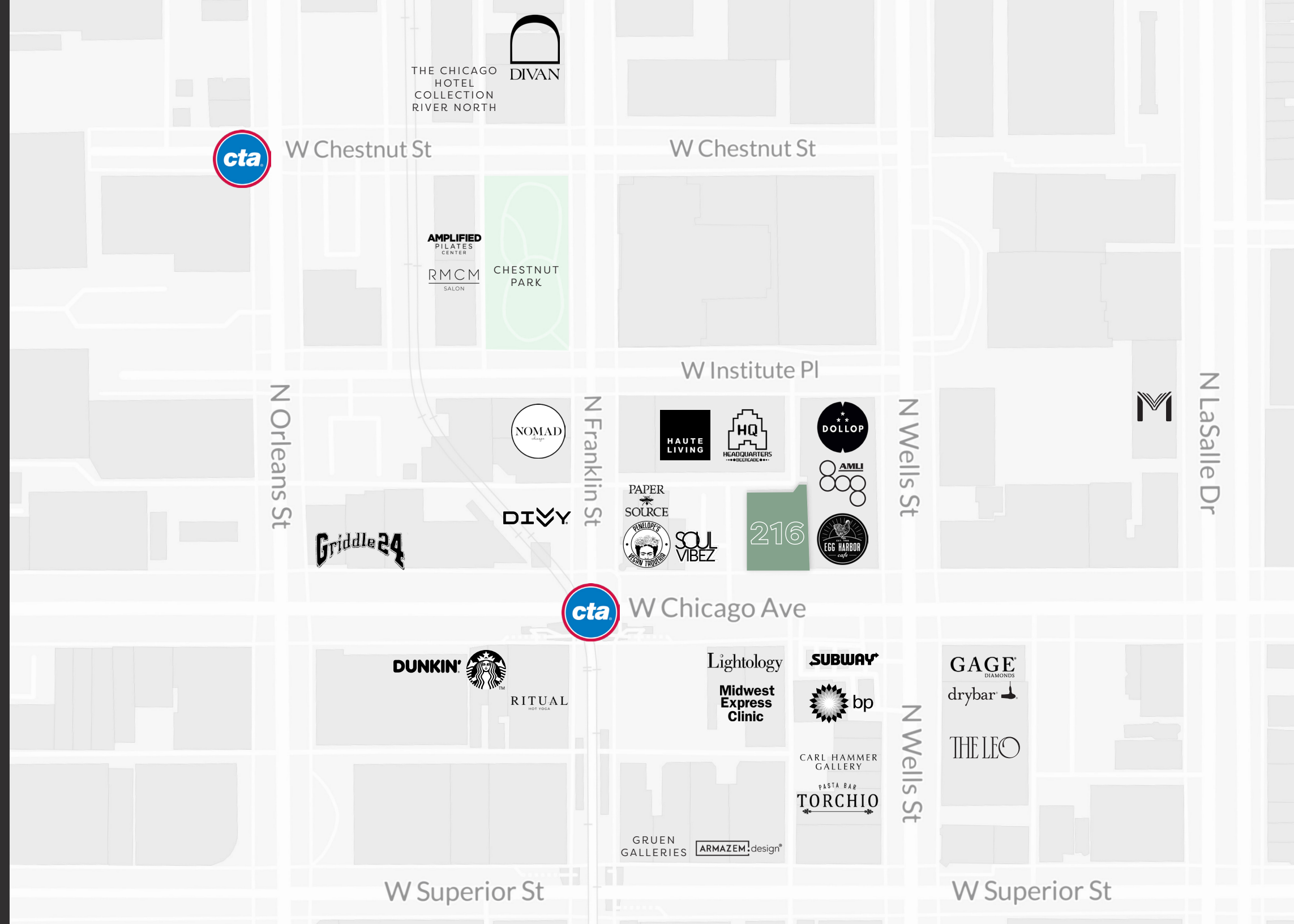


# 216

W. CHICAGO

## A RIVER NORTH AREA HIGHLIGHT

- Located just one block from multiple bus lines and the Brown/Purple CTA stop at Chicago Avenue and Franklin Street
- Convenient area parking for easy access
- Within walking distance of restaurants, art galleries, and residential options
- Situated in River North, an ideal live/work/play community



# 216

## W. CHICAGO

For more leasing information or to schedule a tour, please contact:

**MICHAEL FLINCHBAUGH**

(312) 741-8121

[mflinchbaugh@bradfordallen.com](mailto:mflinchbaugh@bradfordallen.com)

**CRAIG NADBORNE**

(312) 994-5796

[cnadborne@bradfordallen.com](mailto:cnadborne@bradfordallen.com)

exclusively leased by

**BA** BRADFORD  
ALLEN