

INDUSTRIAL/COMMERCIAL LAND | BUILD TO SUIT

Boundaries are approximate, please see plat map with listing to verify easements and boundaries.



Grass Valley Industrial Park at I-90 & US-93

Missoula County, Montana

Exclusively listed by:
Matt Mellott, CCIM | SIOR
Matt@SterlingCREadvisors.com
406.203-3950



GRASS VALLEY
Industrial Park



SterlingCRE
ADVISORS

Contents

(click to jump to section)

[Executive Summary](#)

[Location](#)

[Demographics](#)

[Property Details](#)

[Market Overview](#)

[Brokerage Team](#)

[Limiting Conditions](#)

Boundaries are approximate, please see plat map with listing to verify easements and boundaries

Opportunity Overview

SterlingCRE Advisors is pleased to present Grass Valley Industrial Park (GVIP), Missoula's newest industrial park located close to the Interstate 90 and US-93 Interchange (Exit 96).

Industrial lots are hard to find in Missoula, especially with municipal services and ease of access to major transit corridors. GVIP offers quick, traffic signal protected truck access to Interstate 90, US Hwy 93, US Hwy 12 and Montana Hwy 200.

Each lot has paved access roads, access to city of Missoula sewer and municipal scale water (including fire flow of up to 1,500 gal/min for 4 hours) from the forthcoming Wye West Water System.

The Wye is home to numerous logistics, manufacturing and large equipment sales/service facilities. Companies such as Amazon, XPO Logistics, DSV, Montana Knife Company and TEMCO Logistics have their corporate homes in Missoula here.

Up to 19 lots are available ranging between ± 0.95 acres up to ± 3.61 acres. The lots are zoned Industrial Center Light (Missoula County zoning, ICL), which allows light manufacturing and warehousing by-right.

Interactive Links

 [Link to Listing](#)

 [Street View](#)

****Seller currently holds equitable title to subject properties. Some closings will be contingent and subject to receipt of fee simple title and final plat.**

Address	Grass Valley Industrial Park
Price Range	\$275,000 - \$849,000
Zoning	ICL (Light Industrial)
Property Type	Industrial
Road Frontage Lots	Mocassin Lane, Enterprise Way, Racetrack Lane, and Alita Drive
Traffic Counts	MT-474 $\pm 13,283$ (2023 AADT) Interstate 90 $\pm 20,998$ (2023 AADT) Highway 93 $\pm 10,349$ (2023 AADT)
Interstate Proximity	± 0.60 miles from I-90/US-93/MT-474 interchange
Access	Hwy 10 via Alita Drive, Summit Drive, or Racetrack Lane

Available Lots & Pricing

Lot #	Acreage	Price	Lot #	Size	Price
1	2.70	Under Contract	11	2.31	\$549,000
2	2.06	Under Contract	12	2.51	\$649,000
3	3.55	Under Contract	13	2.90	\$725,000
4	2.90	Under Contract	14	0.95	Under Contract
5	1.45	Under Contract	15	1.68	\$449,000
6	1.64	\$449,000	16	1.87	\$399,000
7	3.56	Under Contract	17	1.34	\$375,000
8	2.90	Under Contract	18	3.61	\$799,000
9	1.29	\$375,000	19	2.50	\$599,000
10	0.95	\$325,000			





FUTURE PHASES



3 min drive to traffic signal protected access to I-90 & US-93 interchange



City of Missoula Sewer to each parcel



Zoned Industrial Center Light (ICL) which allows most light industrial and logistics uses



3 phase power and natural gas available



Corporate neighbors are Amazon, XPO, DSV, Old Dominion Freight, Montana Knife Company, TEMCO Logistics and others

LOCATION



GRASS VALLEY
Industrial Park



SterlingCRE
ADVISORS

Area Businesses

Companies including:

Amazon

Montana Knife Company

Paradise Dental Technologies

XPO Logistics

Old Dominion Freight

Love's Travel Center

EverLogs

TEMCO Logistics

DSV

Border States

Wilson Logistics



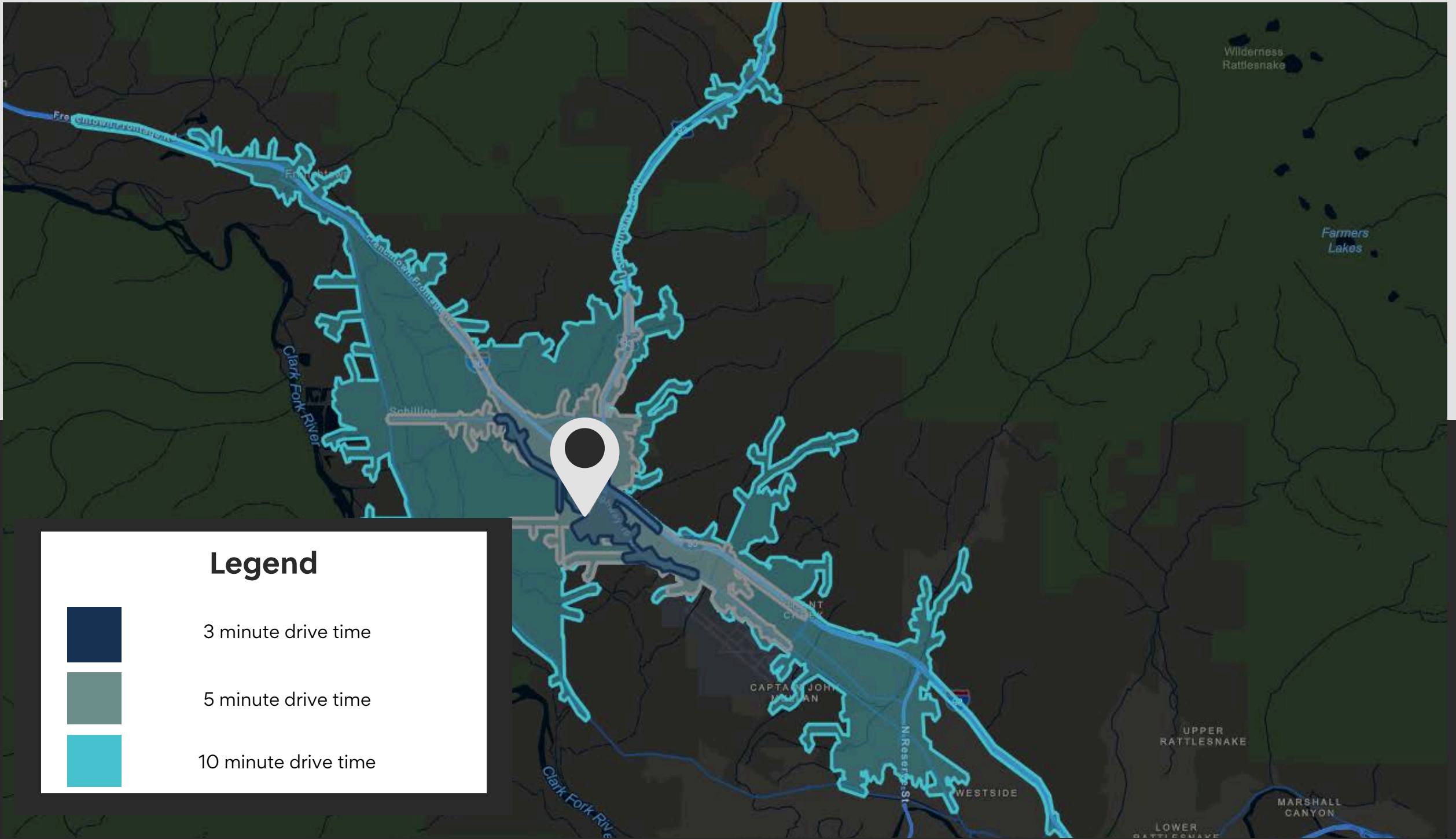
Location Overview



DEMOGRAPHICS



SterlingCRE
ADVISORS



Legend



3 minute drive time



5 minute drive time



10 minute drive time

Drive Time Map

KEY FACTS

10 minutes

9,844

Population

37.4

Median Age

2.3

Average Household Size

\$81,124

Median Household Income

2,718

2023 Owner Occupied Housing Units (Esri)

1,575

2023 Renter Occupied Housing Units (Esri)

BUSINESS

10 minutes



897

Total Businesses



12,201

Total Employees

HOUSING STATS

10 minutes



\$452,118

Median Home Value



\$11,351

Average Spent on Mortgage & Basics



\$1,075

Median Contract Rent

2024 Households by income (Esri)

10 minutes

The largest group: \$100,000 - \$149,999 (20.4%)

The smallest group: \$25,000 - \$34,999 (3.4%)

Indicator ▲	Value	Diff	
<\$15,000	5.8%	-1.4%	
\$15,000 - \$24,999	5.8%	-1.1%	
\$25,000 - \$34,999	3.4%	-3.2%	
\$35,000 - \$49,999	17.8%	+2.7%	
\$50,000 - \$74,999	10.8%	-4.7%	
\$75,000 - \$99,999	20.0%	+3.2%	
\$100,000 - \$149,999	20.4%	+4.3%	
\$150,000 - \$199,999	8.8%	+2.0%	
\$200,000+	7.1%	-1.9%	

Bars show deviation from

Variables	3 minutes	5 minutes	10 minutes	Variables	3 minutes	5 minutes	10 minutes
2022 Total Population	91	904	9,844	2022 Per Capita Income	\$36,785	\$49,430	\$42,172
2022 Household Population	91	903	9,798	2022 Median Household Income	\$82,494	\$112,613	\$81,124
2022 Family Population	75	713	7,310	2022 Average Household Income	\$96,891	\$137,148	\$98,645
2027 Total Population	95	932	10,801	2027 Per Capita Income	\$44,409	\$57,716	\$50,429
2027 Household Population	95	931	10,755	2027 Median Household Income	\$91,757	\$127,013	\$92,417

PROPERTY DETAILS



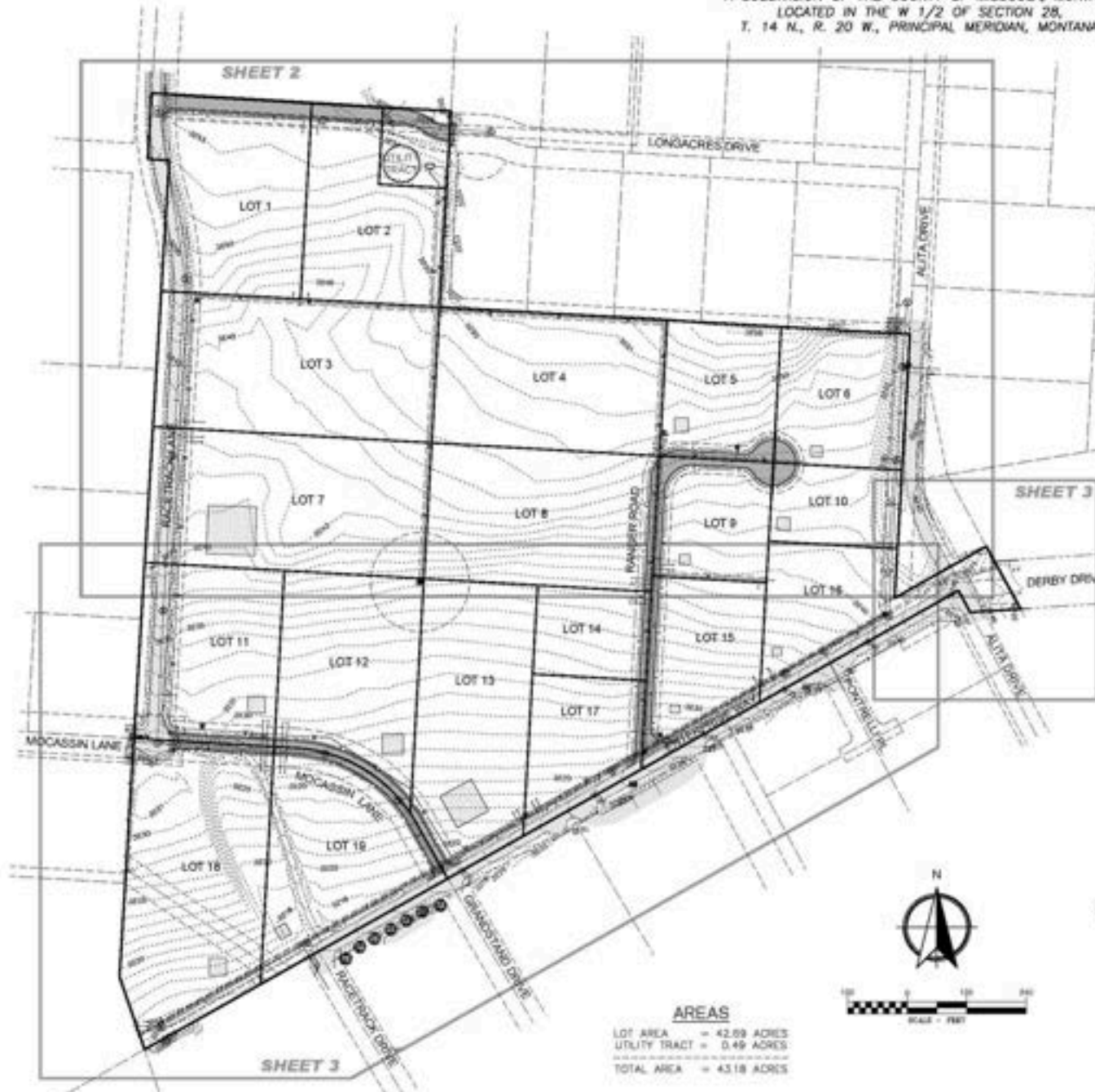
GRASS VALLEY
Industrial Park



SterlingCRE
ADVISORS

PRELIMINARY PLAT OF GRASS VALLEY INDUSTRIAL SUBDIVISION

A SUBDIVISION OF THE COUNTY OF MISSOULA, MONTANA
LOCATED IN THE W 1/2 OF SECTION 28,
T. 14 N., R. 20 W., PRINCIPAL MERIDIAN, MONTANA



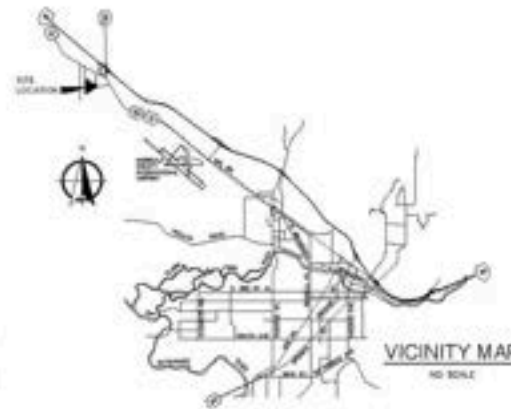
LEGEND-PROPOSED

- SIDE OF ASPHALT
- ASPHALT
- GRAVEL SURFACING
- WATER MAIN
- WATER SERVICE
- SANITARY SEWER MAIN
- SANITARY SEWER SERVICE
- STORM DRAIN
- CULVERT
- FENCE
- ROAD OPTION
- ✕ FIRE HYDRANT
- WELL
- SANITARY SEWER MANHOLE
- STORM DRAIN MANHOLE
- EGRESS/STAIR WELLS/PROTECTIVITY
- SIGN
- UTILITY EGRESS
- WALKWAY (PROP. ACCESS CONTROL) AND
- UTILITY AND ENCLAVE ACCESS/ENCLOSURES
- BOUNDARY AND ENCLAVE ACCESS/ENCLOSURES

LEGEND-EXISTING

- SUBJECT PROPERTY BOUNDARY
- PUBLIC RIGHT-OF-WAY LINE
- CONTRACT/PLAT LINE
- EASEMENT LINE
- CONCRETE DRIVEWAY
- ASPHALT
- SIDE OF ASPHALT
- SIDE OF GRAVEL
- SANITARY SEWER MAIN
- SANITARY SEWER SERVICE LINE
- SIDE WALK
- FENCE
- ABANDONED/EXISTING
- TOLERANCE
- CONTOUR OF FOOT COUNTERS
- EXIST. WATER VALVE
- EXIST. SANITARY MANHOLE
- COMMUNICATIONS MANHOLE
- EXISTING TREE
- MAIL BOX
- SIGN

AREAS
 LOT AREA = 42.89 ACRES
 UTILITY TRACT = 0.49 ACRES
 TOTAL AREA = 43.38 ACRES



LEGAL DESCRIPTION

LOT 9A OF RACE TRACK INDUSTRIAL PARK,
LOT 9 AND RACE TRACK DEVELOPMENT PARK,
PHASE 1, LOTS 1 AND 2

BASIS OF BEARINGS

MONTANA 2000 STATE PLANE COORDINATE
SYSTEM - NORTH AMERICAN DATUM 1983 (CONG)

OWNER

WILSON HOLDINGS MT LLC

SUBDIVIDER

MONTANA REAL ESTATE PROJECTS, L.L.C.

COMPREHENSIVE PLAN

INDUSTRIAL CENTER

TYPE OF SUBDIVISION

INDUSTRIAL

ZONING

IL

VERTICAL DATUM

NORTH AMERICAN VERTICAL DATUM 1988

CERTIFICATE OF ENGINEER

I HEREBY CERTIFY THAT THE PRELIMINARY STREET, STORM
SEWER, WATER, AND WATER PLANS WERE PREPARED
UNDER MY SUPERVISION.

CERTIFICATE OF SURVEYOR

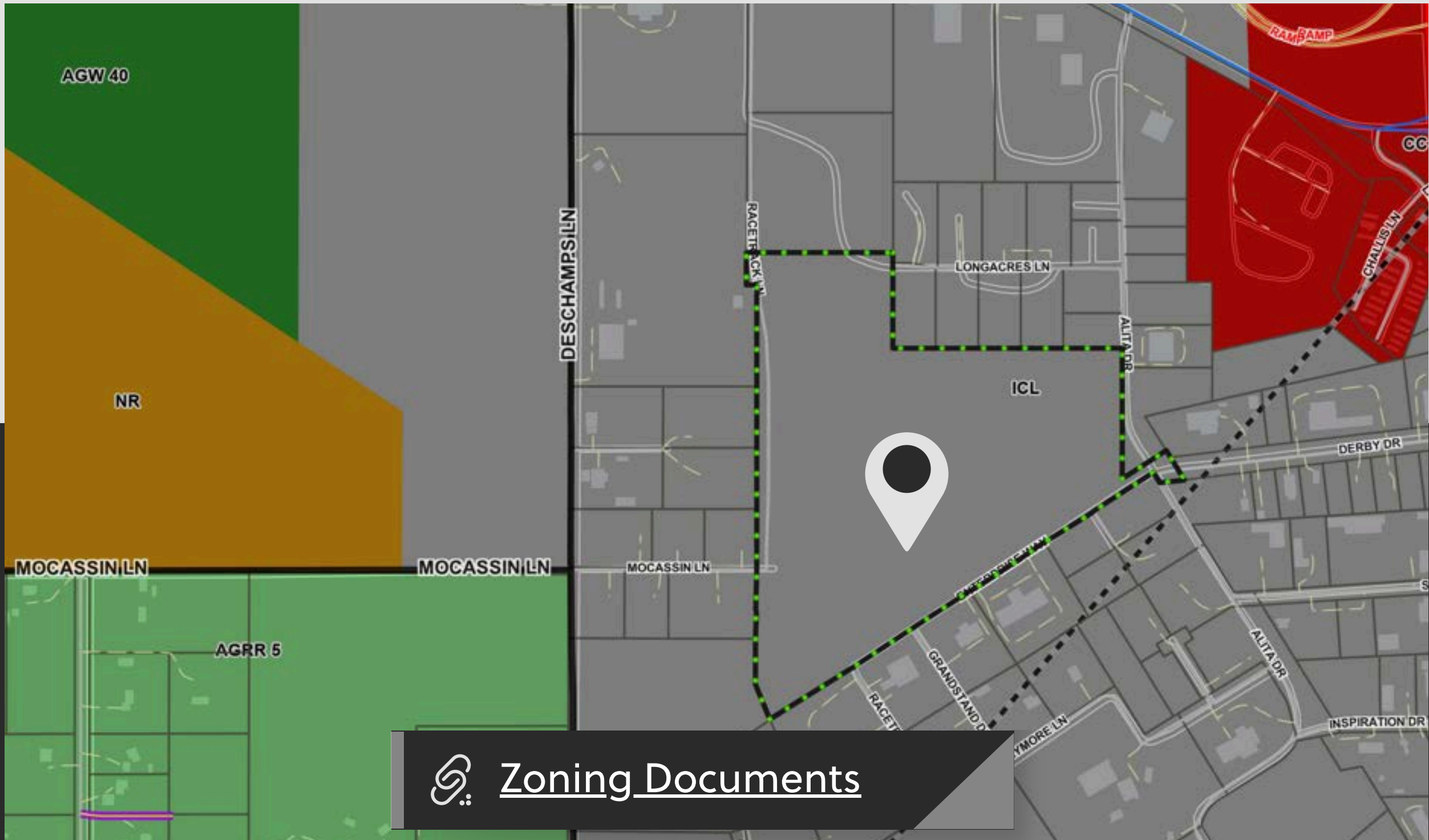
I HEREBY CERTIFY THAT THE BOUNDARY AND PRELIMINARY
LOT LINES OF THIS PROPOSED SUBDIVISION WERE
PREPARED UNDER MY SUPERVISION.

SHEET 1 OF 3
 DATE: OCTOBER 2023
 DRAFT: CED
 PROJECT NO.: 22-10-17.2
 FILE NO.: 22107_PREL PLAT.DWG
 LAYOUT TAB: SH1

1/4	SEC	T.	R.
28	14N	20W	

PRELIMINARY
 PLOTTED: 10/13/23
 SAVED: 10/10/23





[Zoning Documents](#)

MARKET OVERVIEW



SterlingCRE
ADVISORS

Missoula Air Service

Missoula International Airport offers direct flights to major cities on the west coast and midwest.

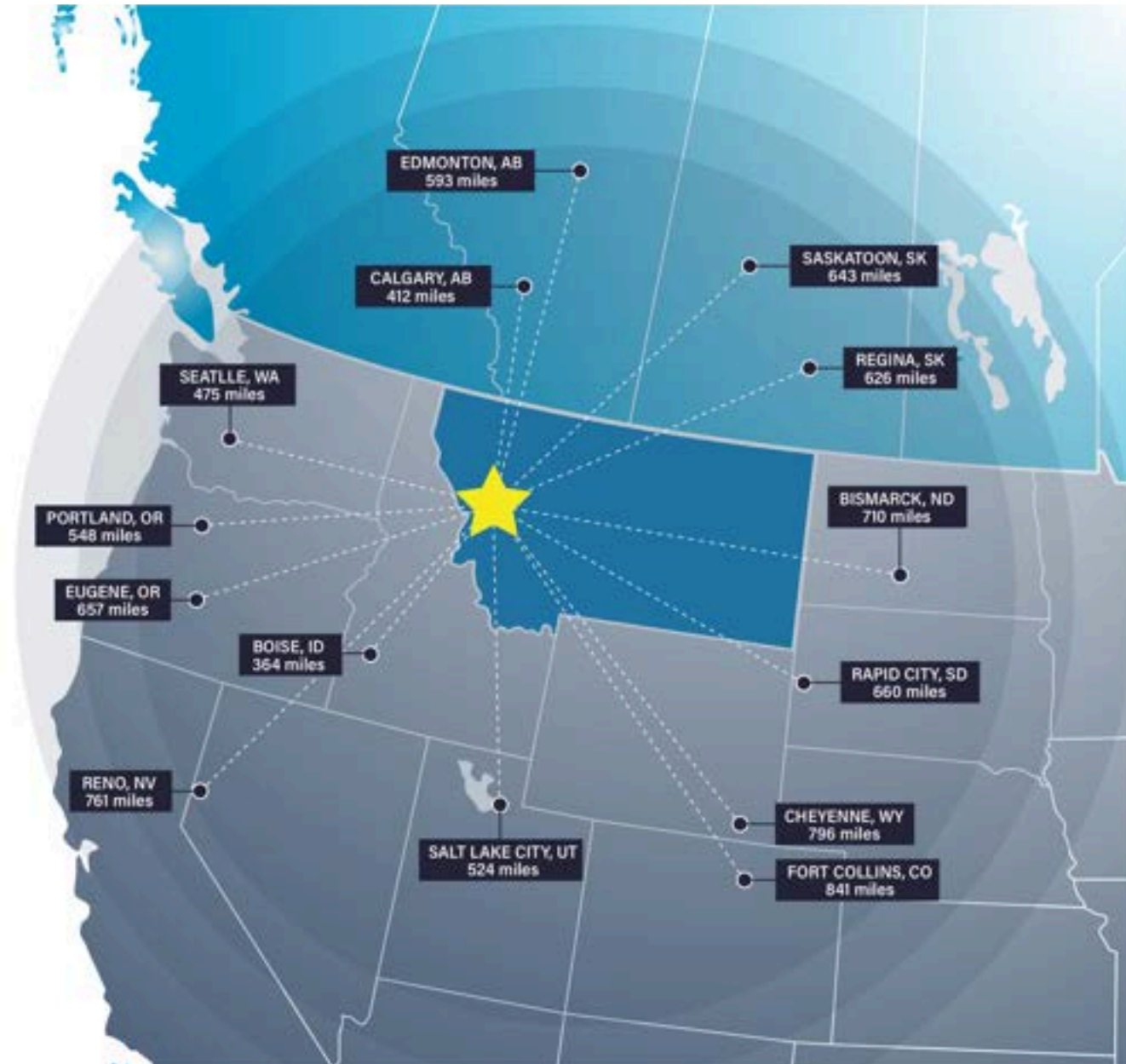


Missoula Access

Missoula offers strategic proximity to major cities in the Pacific Northwest, Midwest, and Canada.

Missoula is within a day's truck drive of cities across the Northwest, including major Canadian metros. Easy access to Interstate 90 and US Highway 93 means Montana's major cities including Billings, Bozeman, Butte, Helena, Great Falls, Kalispell and Missoula are within a half day's drive.

Access to rail and the Missoula International Airport round out the city's access to a multimodal transportation network.



Access Across the Northwest

Top Employers

University of Montana

3,000+ employees

Missoula County Public Schools

3,000+ employees

St. Patrick Hospital

1000+ employees

Montana Rail Link

1,000+r employees

Community Medical Center

1000+ employees

Missoula County

500+ employees

City of Missoula

500+ employees

Allegiance Benefits

500+ employees

Noteworthy

Submittable 



workiva



Pathlabs



Cognizant

PatientOne



Source: Montana Department of Labor & Industry | lmi.mt.gov & Zippia | zippia.com



About Missoula

ACCOLADES

#1 Most Fun City for Young People

Smart Assets

#2 Best Places to Live in the American West

Sunset Magazine

Top 10 Medium Cities for the Arts

2023 Southern Methodist University

#4 Best Small Cities in America to Start a Business

Verizon Wireless

#10 Best Small Metros to Launch a Business

CNN Money

#6 Best Cities for Fishing

Rent.com

#1 City for Yoga

Apartment Guide

Top 10 Cities for Beer Drinkers

2015, 2016, 2017, 2019, 2022

International Public Library of 2022

The International Federation of Library Associations World Congress

PEOPLE

12.5% Population Growth - 2012-2022

Missoula ranks among highest net migration cities in US

Median Age 34 Years Old

The median age in the US is 39

58.8% Degreed

Associates degree or higher, 18.7% have a graduate level degree

24.7% High Income Households

Incomes over \$100,000 a year

53.4% Renters

Top 5 Occupations

Office & Admin Support, Food Service, Sales, Transportation

ACCESS

16 Minutes

Average Commute Time

15.6% Multimodal Commuters

Walk or bike to work

81 Hours Saved

81 hours saved in commute yearly over national average

14 Non-Stop Air Destinations

With a recently upgraded terminal at the Missoula International Airport

62 Miles

Of bike lanes with a Gold rating from the League of American Bicyclists

12 Routes

Provided by a bus network across the City of Missoula

11 EV Charge Stations

Available to the public across Missoula

ECONOMY

Designated as a Tech Hub

Western Montana was one of 30 applicants out of 200 designated as a Tech Hub by the federal government and now eligible for millions of dollars in funding for research in smart, autonomous and remote sensing technologies.

Diversity Among Top Employers

University of Montana (education), Providence Health Services/St. Patrick's Hospital (medical), Community Medical Center (medical), Montana Rail Link (transportation), Neptune Aviation (aviation services)

High Labor Participation

Missoula consistently offers one of the highest labor force participation rates in the country.

Expanding Industries

Missoula has seen major growth in construction, professional, scientific, and manufacturing businesses over the past decade.

Growing Number of Technology Companies

Cognizant, onX, Submittable, and Lumenad are some leading tech firms in Missoula

Brokerage and Marketing Team



MATT MELLOTT, CCIM | SIOR
Commercial Real Estate Advisor

Matt delivers results for his clients through superior market knowledge, data analysis and effective negotiating. His areas of expertise include office and industrial leasing and sales, land sales and development consulting.



JESSICA BALDWIN
Brand Marketing & PR Director

Jessica enhances property visibility through strategic marketing in print, digital, and PR. Drawing on her background in brand building and online lead generation, she effectively positions properties to attract the right audience, maximizing their market presence and investment potential.



CHRIS BRISTOL
Marketing & Transaction Coordinator

Chris leverages her project management, e-commerce, and mortgage banking experience to support seamless transactions. Her ability to position properties effectively and execute projects efficiently ensures a high-level of service to SterlingCRE's commercial real estate clients.



MAGGIE COLLISTER
Marketing & Project Analyst

With a background in real estate development and graphic design, Maggie creates punchy and compelling marketing pieces for listings. Her understanding of real estate and economic trends and data create strong selling points for properties in Montana's growing markets.



SARA TOWNSLEY
Research Director

Sara manages the extensive library of real estate data that provides the Sterling team accurate and up to date information on transactions and sales. Her attention to detail and organization allows for efficient valuations and pricing guidance. Sara is also the first to know about new developments and businesses in the community.

Disclaimer

CONFIDENTIALITY & DISCLAIMER All materials and information received or derived from SterlingCRE Advisors its directors, officers, agents, advisors, affiliates, and/or any third party sources are provided without representation or warranty as to completeness, veracity, or accuracy, condition of the property, compliance or lack of compliance with applicable governmental requirements, developability or suitability, the financial performance of the property, the projected financial performance of the property for any party's intended use or any and all other matters. Neither SterlingCRE Advisors its directors, officers, agents, advisors, or affiliates makes any representation or warranty, express or implied, as to accuracy or completeness of any materials or information provided, derived, or received. Materials and information from any source, whether written or verbal, that may be furnished for review are not a substitute for a party's active conduct of its own due diligence to determine these and other matters of significance to such party. SterlingCRE Advisors will not investigate or verify any such matters or conduct due diligence for a party unless otherwise agreed in writing. EACH PARTY SHALL CONDUCT ITS OWN INDEPENDENT INVESTIGATION AND DUE DILIGENCE. Any party contemplating or under contract or in escrow for a transaction is urged to verify all information and to conduct their own inspections and investigations including through appropriate third-party independent professionals selected by such party. All financial data should be verified by the party including by obtaining and reading applicable documents and reports and consulting appropriate independent professionals. SterlingCRE Advisors makes no warranties and/or representations regarding the veracity, completeness, or relevance of any financial data or assumptions. SterlingCRE Advisors does not serve as a financial advisor to any party regarding any proposed transaction. All data and assumptions regarding financial performance, including that used for financial modeling purposes, may differ from actual data or performance. Any estimates of market rents and/or projected rents that may be provided to a party do not necessarily mean that rents can be established at or increased to that level. Parties must evaluate any applicable contractual and governmental limitations as well as market conditions, vacancy factors, and other issues in order to determine rents from or for the property. Legal questions should be discussed by the party with an attorney. Tax questions should be discussed by the party with a certified public accountant or tax attorney. Title questions should be discussed by the party with a title officer or attorney. Questions regarding the condition of the property and whether the property complies with applicable governmental requirements should be discussed by the party with appropriate engineers, architects, contractors, other consultants, and governmental agencies. All properties and services are marketed by SterlingCRE Advisors in compliance with all applicable fair housing and equal opportunity laws.