

GROUND LEASE OR BUILD-TO-SUIT OPPORTUNITY AVAILABLE



1469 E Silver Star Road | Ocoee, Florida

- Two parcels available (1.00 AC & 0.92 AC) for ground lease or build-to-suit
- Highly visible prime corner along E. Silver Star Road
- Over 600 feet of frontage with exposure to approximately 24,500 AADT
- Adjacent to Lake Olympia Shopping Center, anchored by Dollar Tree
- C-2 zoning allows drive-thru development, ideal for QSR and coffee concepts

Get more information

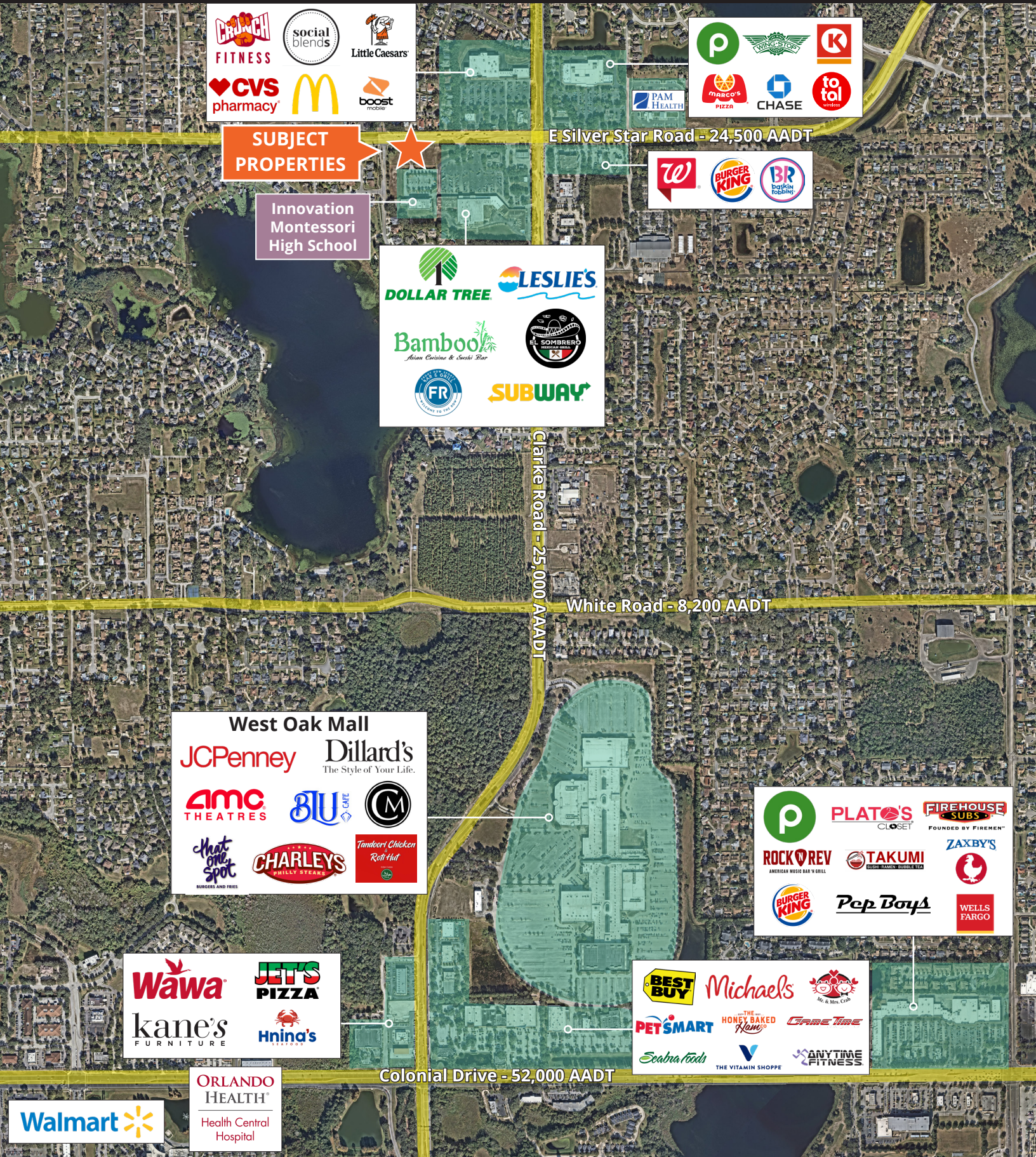
Nick Mastro
Senior Associate
813 444 5334
nick.mastro@avisonyoung.com

Bill Nguyen
Vice President
407 440 6658
bill.nguyen@avisonyoung.com

**AVISON
YOUNG**

Aerial map

1469 E Silver Star Road
Ocoee, FL



CRUNCH FITNESS
social blends
CVS pharmacy
McDonald's
Little Caesars
boost

SUBJECT PROPERTIES

Innovation
Montessori
High School

DOLLAR TREE
LESLIE'S
Bamboo
FR
SUBWAY
EL SOMBRERO

P
TRADING STORE
K
MARCO'S PIZZA
CHASE
to tal

Walgreens
BURGER KING
BR

E Silver Star Road - 24,500 AADT

Clarke Road - 25,000 AADT

White Road - 8,200 AADT

West Oak Mall
JCPenney
Dillard's
AMC THEATRES
BLU GATE
Charley's
Tandori Chicken

P
PLATO'S CLOSET
FIREHOUSE SUBS
ROCK REV
TAKUMI
ZAXBY'S
BURGER KING
Pep Boys
WELLS FARGO

Wawa
JETS PIZZA
kane's FURNITURE
Hnina's

BEST BUY
Michael's
PET SMART
Seabra Foods
THE VITAMIN SHOPPE
ANYTIME FITNESS

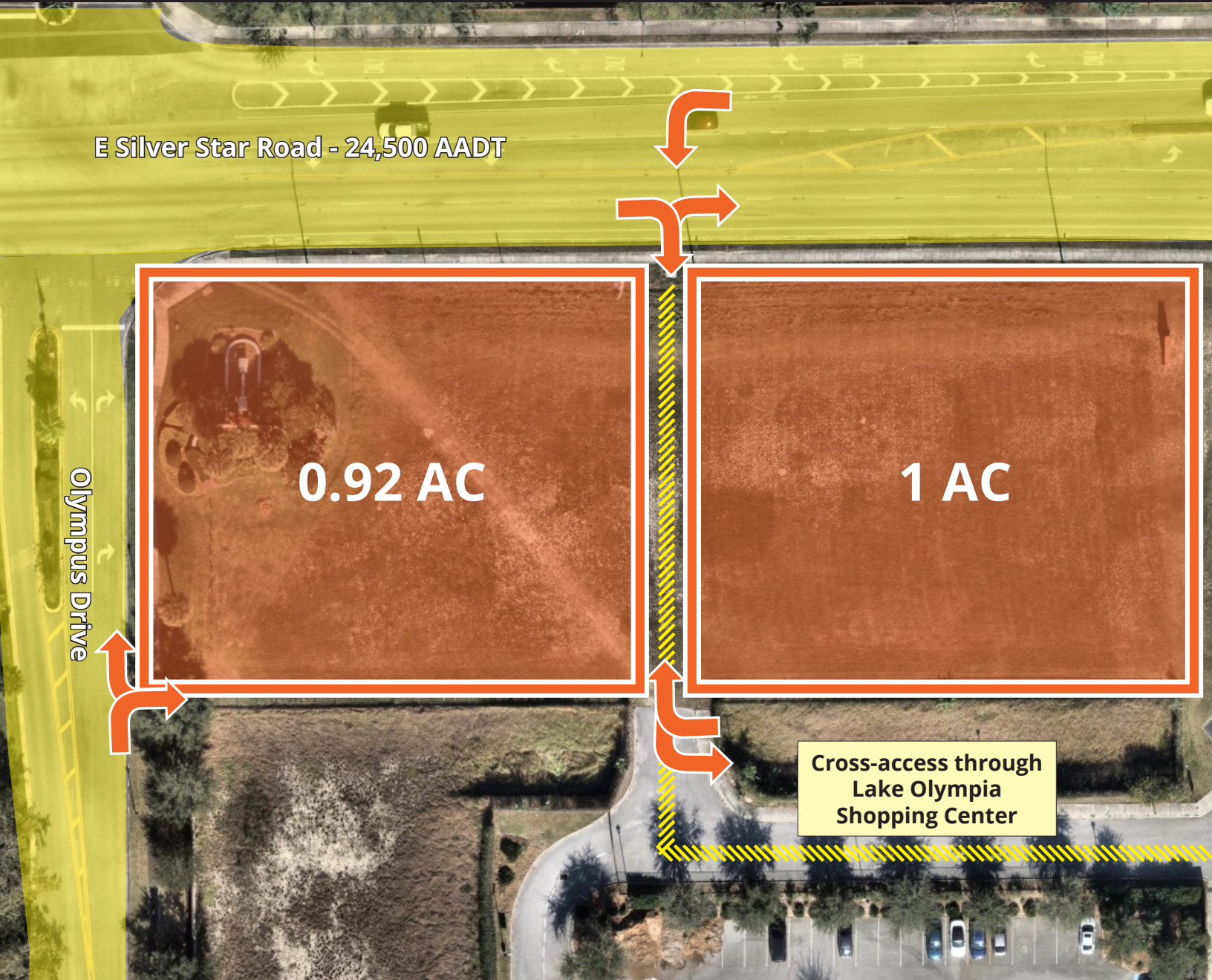
ORLANDO HEALTH
Health Central
Hospital

Walmart

Colonial Drive - 52,000 AADT

Property access point

1469 E Silver Star Road
Ocoee, FL



The property sits at a highly visible, signalized intersection in Ocoee, offering frontage along E Silver Star Rd (SR 438) and Olympus Dr. Located in West Orange County, the site benefits from its position within one of the Orlando MSA's most active and growing retail corridors.



Demographics

1469 E Silver Star Road
Ocoee, FL



Population: Over 215,000 people within a five mile radius.



Density: Over 75,000 households within a five mile radius.



Income: Average household income of \$103,702 within a five mile radius.



Home Value: Median home value of \$383,716 within a five mile radius.



Employment: Employment population of over 67,000 within a five mile radius.

Population	1 MILE	3 MILES	5 MILES
Total population	11,405	79,887	215,407
Median age	40	37	37
Households & Income	1 MILE	3 MILES	5 MILES
Total households	3,911	27,946	75,863
Average HH income	\$105,524	\$95,858	\$103,702
Median home value	\$349,351	\$348,145	\$383,716
Businesses	1 MILE	3 MILES	5 MILES
Total businesses	695	4,560	12,841
Total employees	3,051	27,144	67,594

**If you would like to discuss this further,
please get in touch.**

Nick Mastro

Senior Associate

813. 444. 5334

nick.mastro@avisonyoung.com

Bill Nguyen

Vice President

407 440 6658

bill.nguyen@avisonyoung.com

Visit us online

avisonyoung.com

© 2026 Avison Young – Florida, LLC. All rights reserved.

E. & O.E.: The information contained herein was obtained from sources which we deem reliable and, while thought to be correct, is not guaranteed by Avison Young.

**AVISON
YOUNG**