



# STAND ALONE BUILDING FOR SALE IN PARK CITY UTAH PROSPECTOR SQUARE

2029 SEWINDER DRIVE | PARK CITY, UTAH 84060

OFFERED AT \$3,150,000

**KATIE WILKING** CCIM, MRED  
(435) 640-4964  
katie@wc-cre.com

**SAVANNAH TUFTS**  
(832) 270-1812  
savannah.tufts@bhhsutah.com

**BERKSHIRE HATHAWAY** | UTAH  
HOMESERVICES | PROPERTIES

COMMERCIAL DIVISION

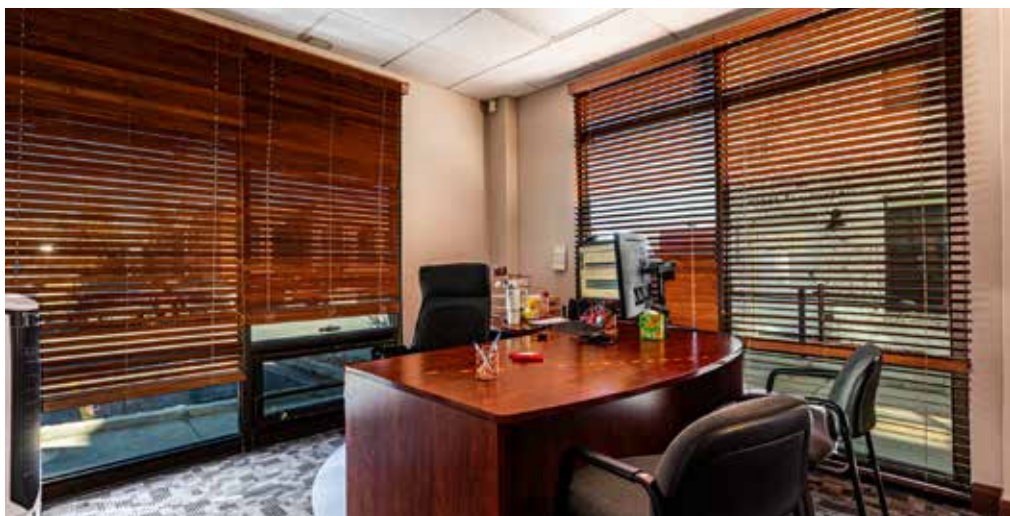
© 2026 BHH Affiliates, LLC. An independently owned and operated franchisee of BHH Affiliates, LLC. Berkshire Hathaway HomeServices and the Berkshire Hathaway HomeServices symbol are registered service marks of Columbia Insurance Company, a Berkshire Hathaway affiliate. Equal Housing Opportunity. Information not verified or guaranteed. Berkshire Hathaway HomeServices and/or its representatives do not warrant or guarantee this information. Information herein was provided by Owner/Seller. Lessee/Purchaser is responsible to confirm any information considered a factor in a decision to lease or purchase.

**PROSPECTOR SQUARE 2029 SIDEWINDER DRIVE | PARK CITY, UTAH 84060**

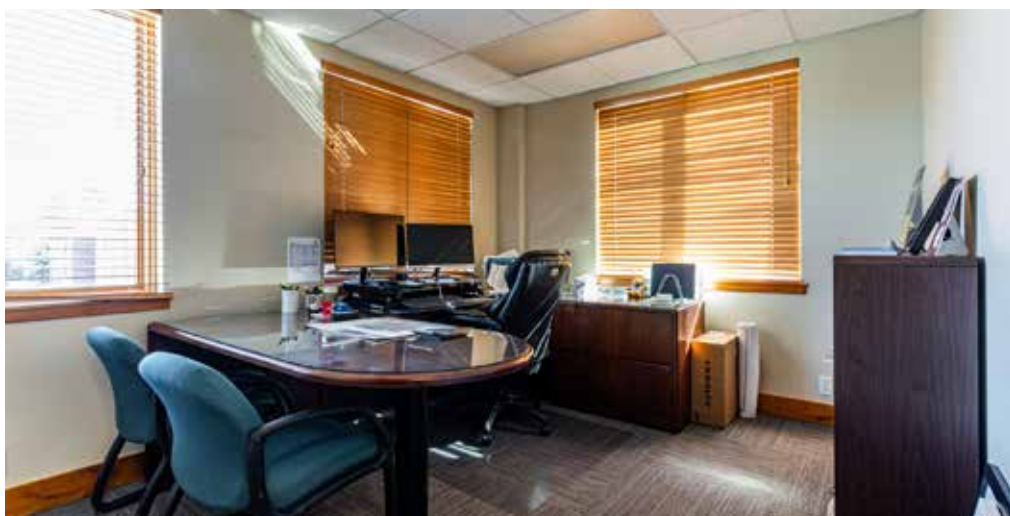
- 7,568 SF
- Located in Park City's bustling business district, this property offers both visibility and accessibility
- General Commercial Zone: Flexible mixed use zone
- Walking distance to retail, hospitality, and dining.
- On Park City's free bus route to Park City Mountain Resort, Deer Valley, and Historic plus Snyderville Basin commercial areas
- In the heart of Prospector Square, a hub for year-round tourism and commerce.
- Convenient access to Highway 224 and Highway 248, linking the property directly to the rest of the Wasatch Front and major highways.
- Close to public transit routes and available parking spaces for both employees and customers.
- Strong year-round demand driven by tourism, local businesses, and special events
- Scenic Mountain Views: Enjoy the scenic beauty of the Wasatch Mountains, which make this property even more attractive for lifestyle-focused companies.



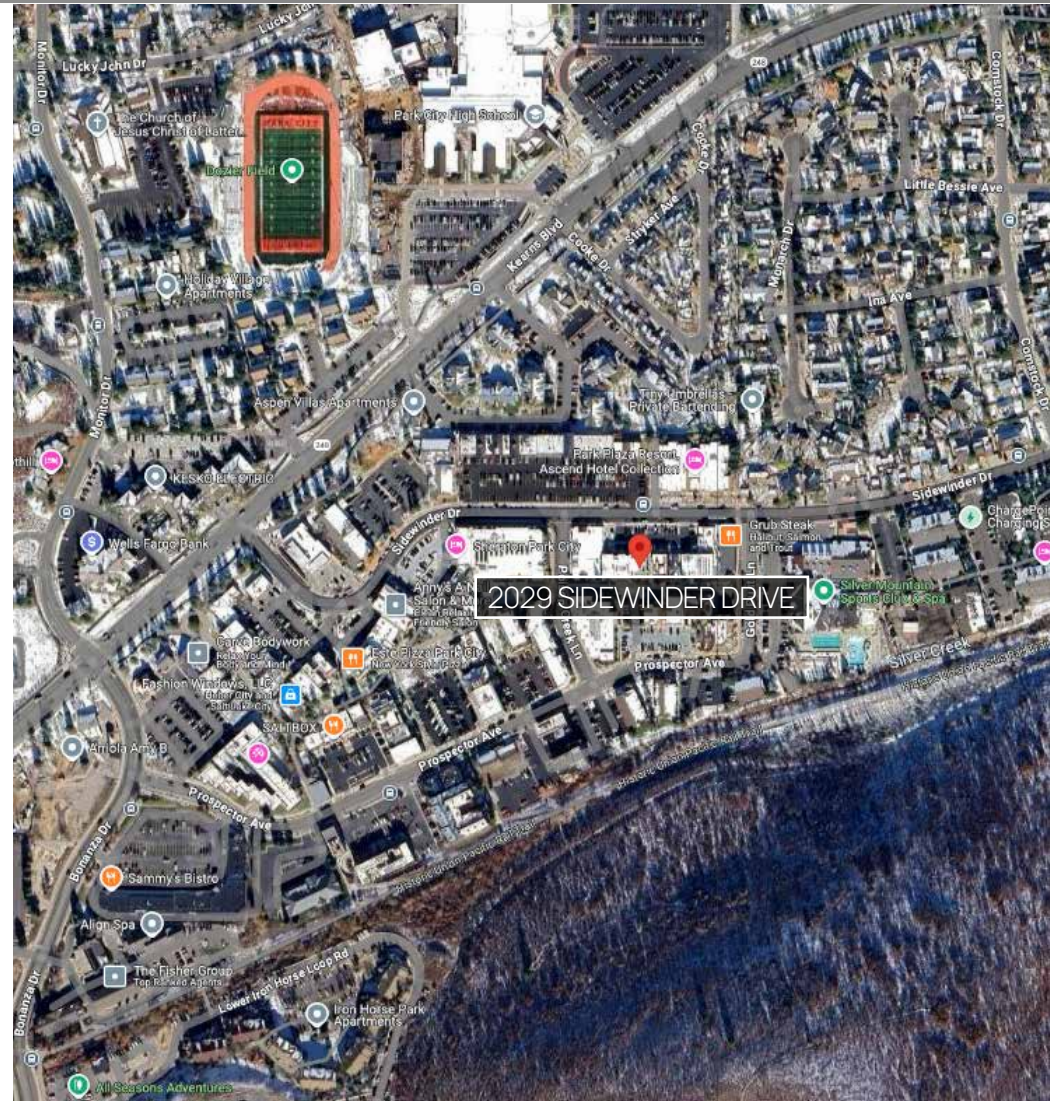
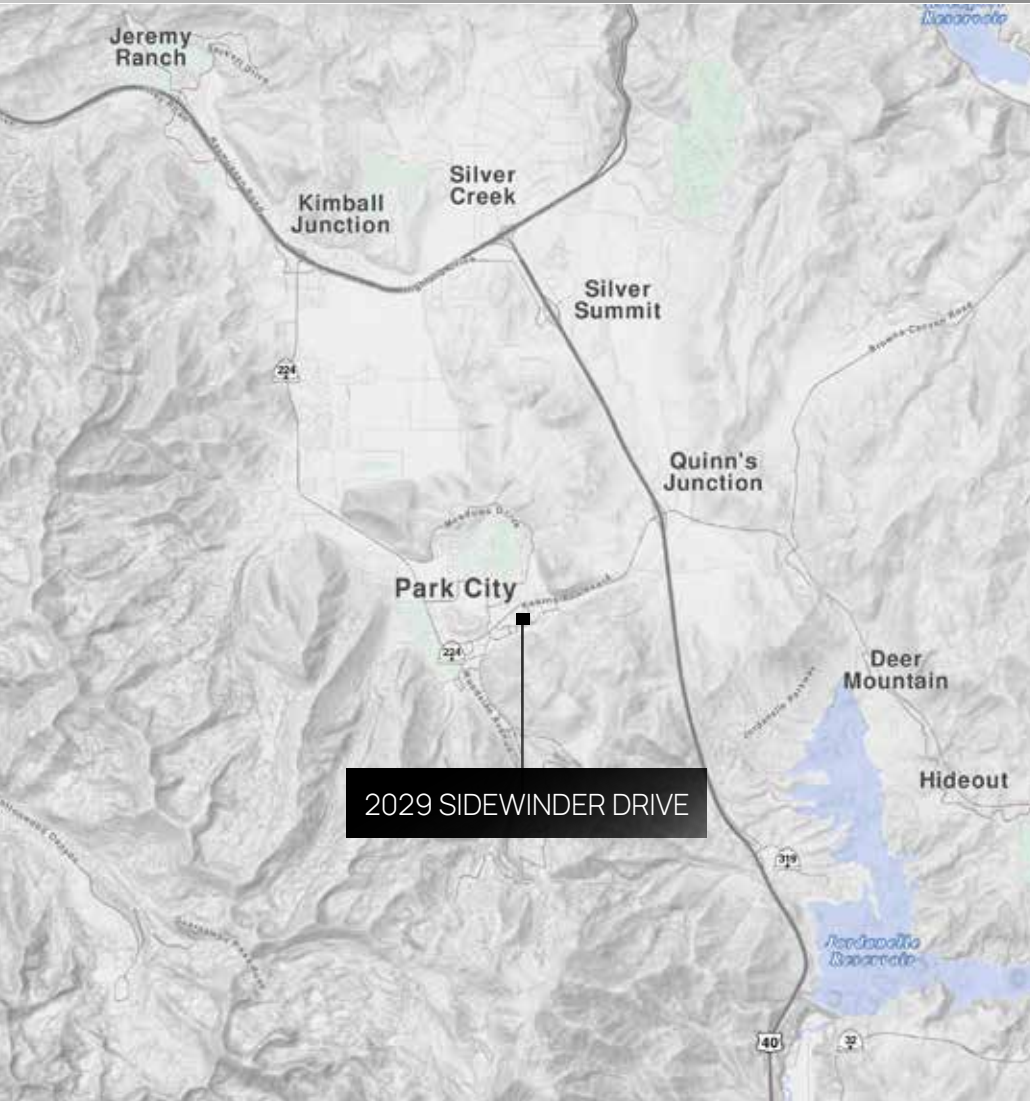
PROSPECTOR SQUARE 2029 SIDEWINDER DRIVE | PARK CITY, UTAH 84060



PROSPECTOR SQUARE 2029 SIDEWINDER DRIVE | PARK CITY, UTAH 84060



# PROSPECTOR SQUARE 2029 SIDEWINDER DRIVE | PARK CITY, UTAH 84060





FOR MORE INFORMATION OR TO ARRANGE A TOUR:

**KATIE WILKING** CCIM, MRED  
(435) 640-4964  
katie@wc-cre.com

**SAVANNAH TUFTS**  
(832) 270-1812  
savannah.tufts@bhhsutah.com

**BERKSHIRE  
HATHAWAY** | UTAH  
HOMESERVICES | PROPERTIES

COMMERCIAL DIVISION

© 2026 BHH Affiliates, LLC. An independently owned and operated franchisee of BHH Affiliates, LLC. Berkshire Hathaway HomeServices and the Berkshire Hathaway HomeServices symbol are registered service marks of Columbia Insurance Company, a Berkshire Hathaway affiliate. Information not verified or guaranteed. Berkshire Hathaway HomeServices and/or its representatives do not warrant or guarantee this information. Information herein was provided by Owner/Seller. Lessee/Purchaser is responsible to confirm any information considered a factor in a decision to lease or purchase.