

6251 Florin Perkins Road

Sacramento, CA 95828

±57,000 SF High Visibility Industrial Building | Power Inn Industrial Submarket | \$0.80/SF NNN



Contact Us

Zac Sweet, SIOR
Senior Vice President
C: 916 717 4768
zac.sweet@cbre.com
Lic. 01352800

Courtney Lee
Associate
C: 916 906 5544
courtney.lee@cbre.com
Lic. 02031694

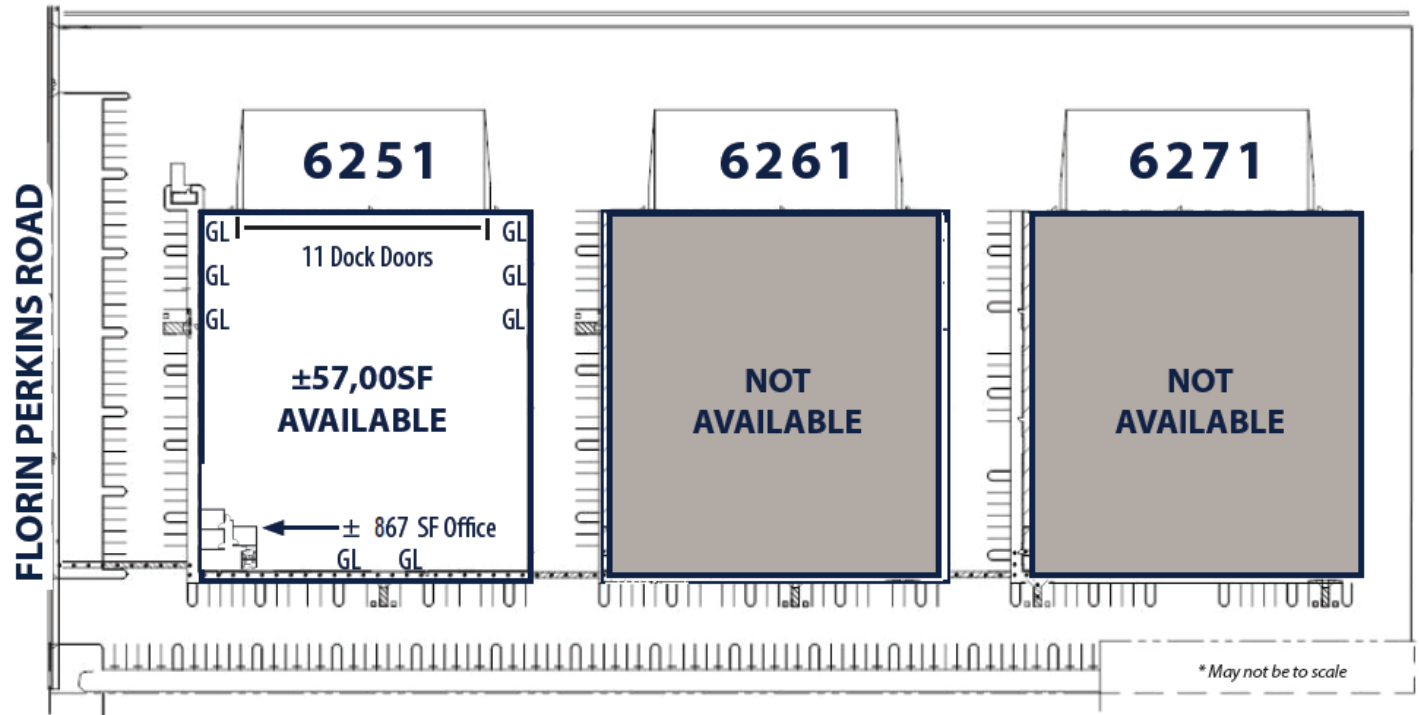
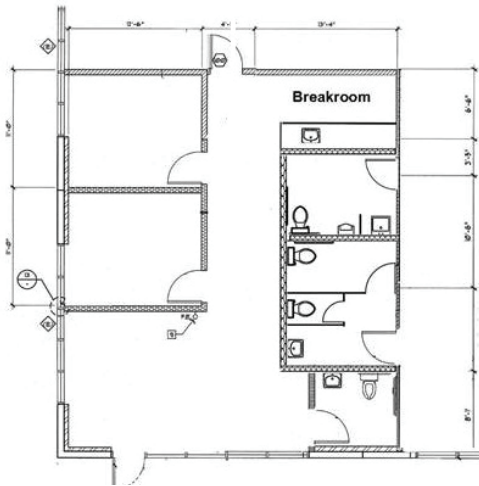


Property Information & Site Plan

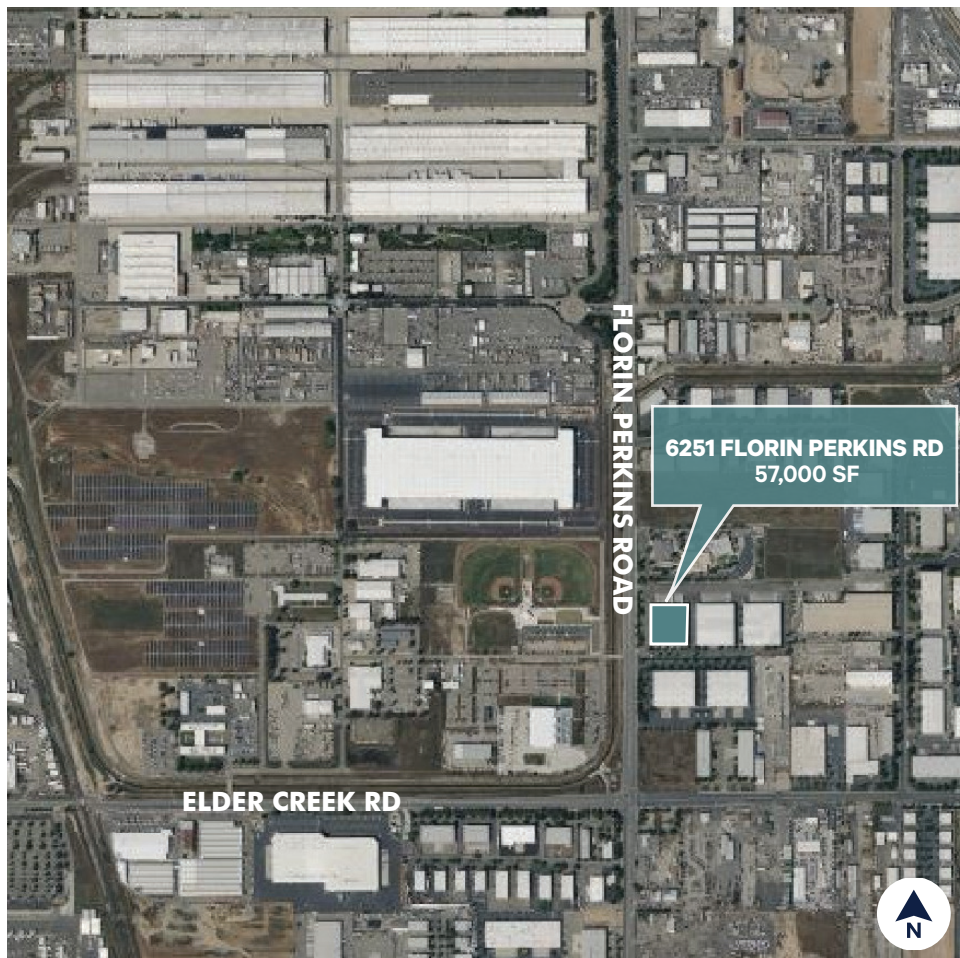
- BUILDING SF: ±57,000
- OFFICE SF: ±867
- CLEAR HEIGHT: 32'
- COLUMN SPACING: 57' x 50'
- DOCK HIGH DOORS: 11 - 9' X 10'
- GRADE LEVEL DOORS: 8 - 10' X 12'
- SPRINKLERS: ESFR
- ELECTRICAL: 1200 AMP 277/480V*

*tenant to independently verify prior to entering binding agreement

OFFICE LAYOUT



Area Map & Aerial



© 2023 CBRE, Inc. All rights reserved. This information has been obtained from sources believed reliable but has not been verified for accuracy or completeness. CBRE, Inc. makes no guarantee, representation or warranty and accepts no responsibility or liability as to the accuracy, completeness, or reliability of the information contained herein. You should conduct a careful, independent investigation of the property and verify all information. Any reliance on this information is solely at your own risk. CBRE and the CBRE logo are service marks of CBRE, Inc. All other marks displayed on this document are the property of their respective owners, and the use of such marks does not imply any affiliation with or endorsement of CBRE. Photos herein are the property of their respective owners. Use of these images without the express written consent of the owner is prohibited.