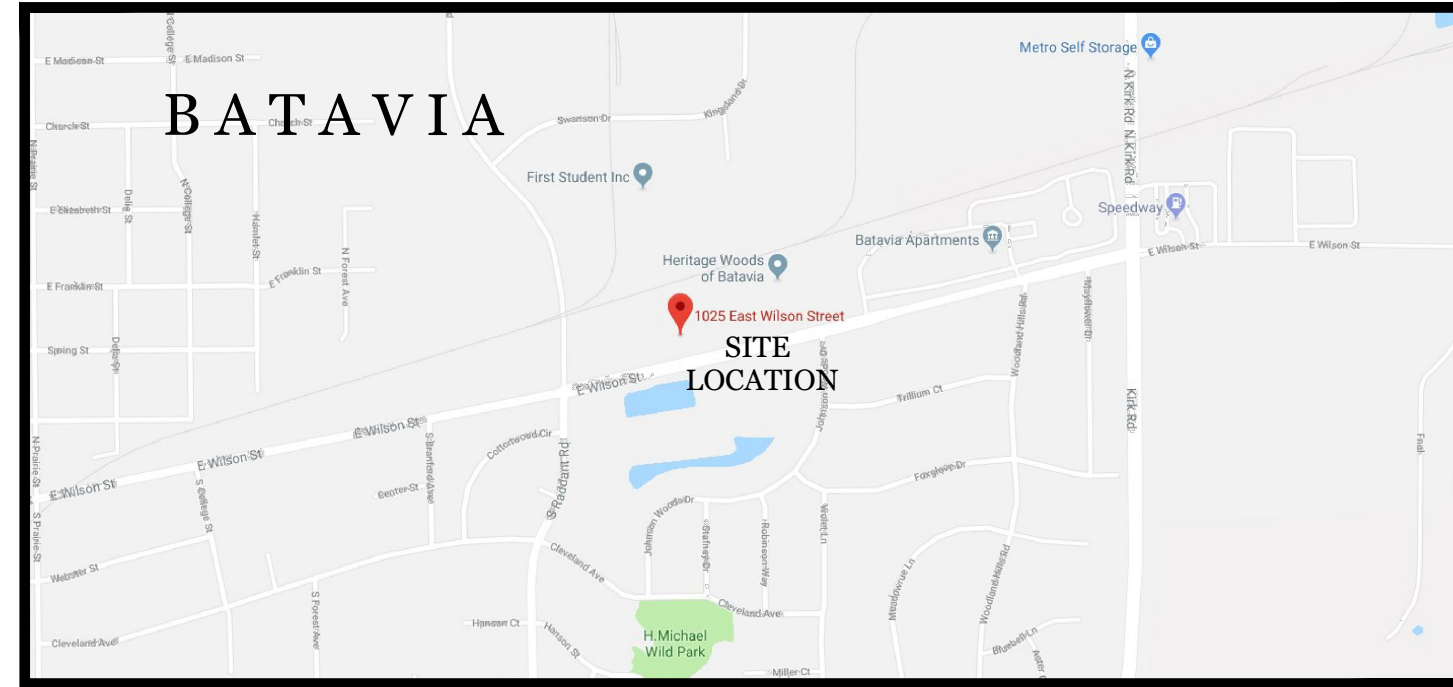


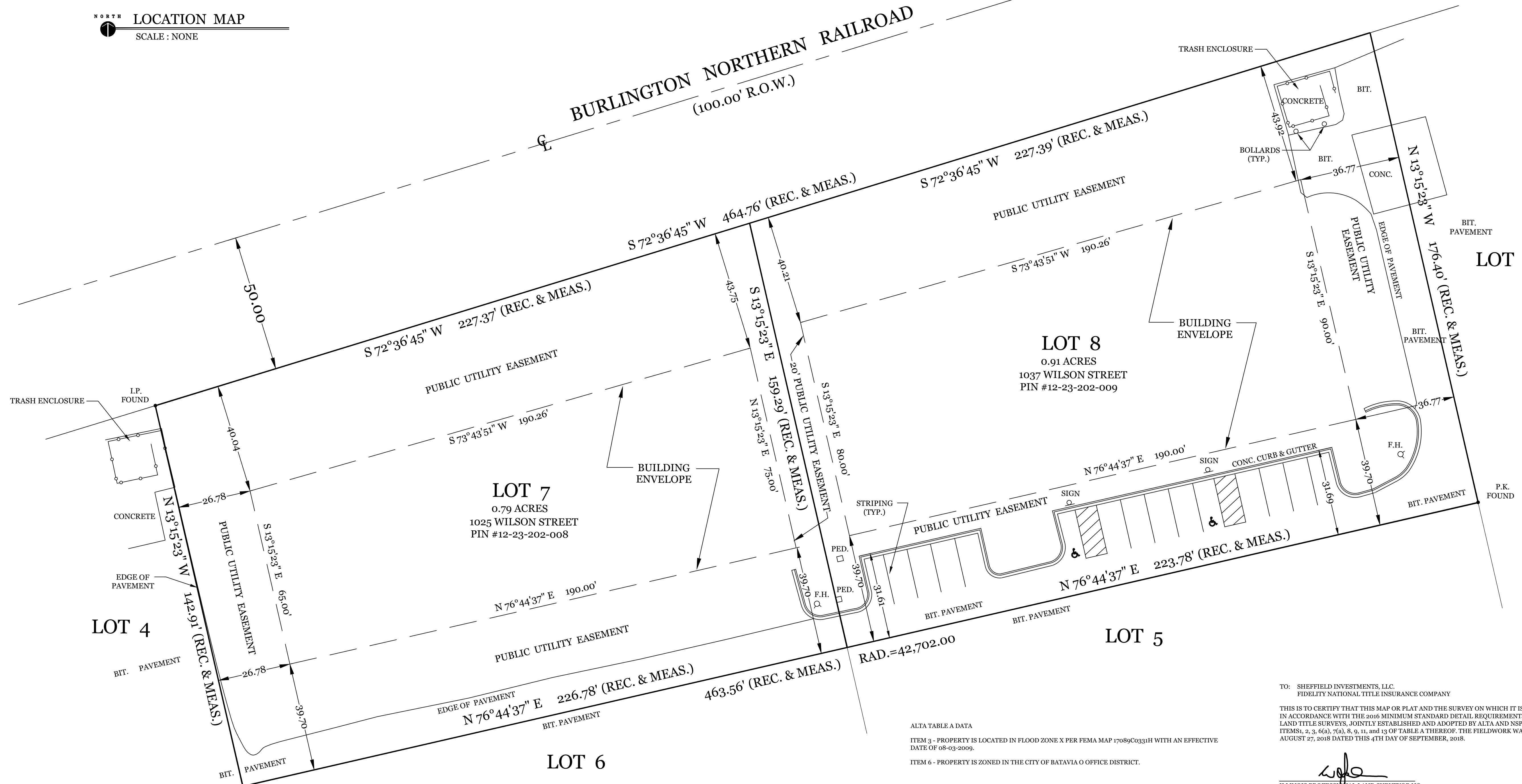
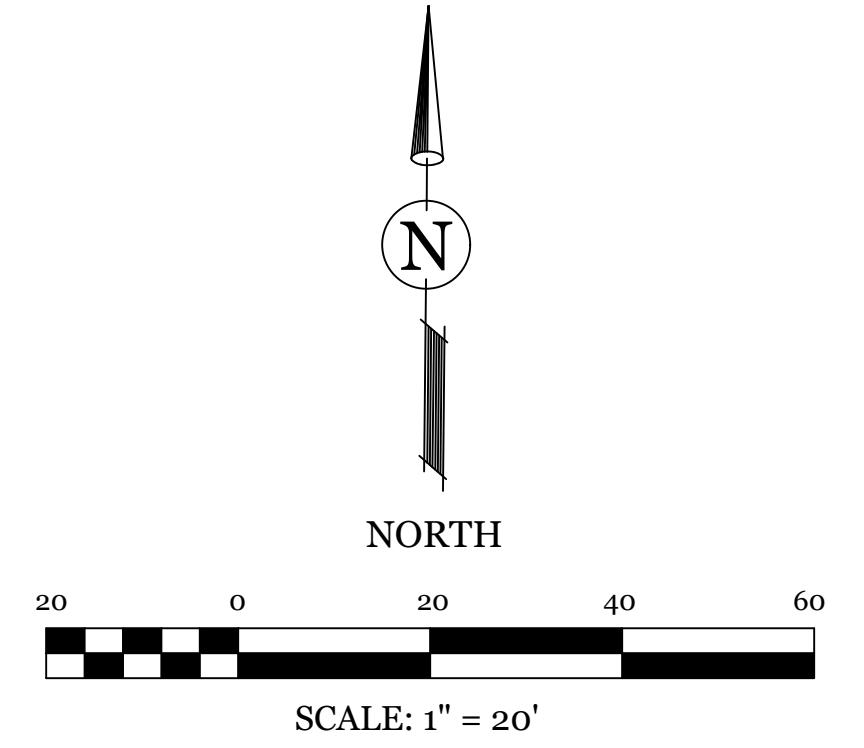
# ALTA /NSPS LAND TITLE SURVEY

## FOR LOT 7 AND 8 IN EAST WILSON STREET BUSINESS PARK

LOTS 7 AND 8 IN THE RESUBDIVISION OF LOT 3 IN EAST WILSON STREET BUSINESS PARK, A SUBDIVISION OF PART OF THE NORTHEAST 1/4 OF SECTION 23, TOWNSHIP 39 NORTH, RANGE 8 EAST OF THE THIRD PRINCIPAL MERIDIAN, ACCORDING TO THE PLAT THEREOF RECORDED AUGUST 21, 2002 AS DOCUMENT NUMBER 2002K103346 IN THE CITY OF BATAVIA, KANE COUNTY, ILLINOIS.



LOCATION MAP  
SCALE: NONE



ALTA TABLE A DATA  
 ITEM 3 - PROPERTY IS LOCATED IN FLOOD ZONE X PER FEMA MAP 17089C0331H WITH AN EFFECTIVE DATE OF 08-03-2009.  
 ITEM 6 - PROPERTY IS ZONED IN THE CITY OF BATAVIA O OFFICE DISTRICT.  
 PUBLIC UTILITY EASEMENT PER DOC. NOS. 2002K069921 AND 2002K103346.

TO: SHEFFIELD INVESTMENTS, LLC.  
 FIDELITY NATIONAL TITLE INSURANCE COMPANY  
 THIS IS TO CERTIFY THAT THIS MAP OR PLAT AND THE SURVEY ON WHICH IT IS BASED WERE MADE IN ACCORDANCE WITH THE 2016 MINIMUM STANDARD DETAIL REQUIREMENTS FOR ALTA/NSPS LAND TITLE SURVEYS, JOINTLY ESTABLISHED AND ADOPTED BY ALTA AND NSPS, AND INCLUDES ITEMS 1, 2, 3, 4(a), 7(a), 8, 9, 11, AND 13 OF TABLE A THEREOF. THE FIELDWORK WAS COMPLETED ON AUGUST 27, 2018 DATED THIS 4TH DAY OF SEPTEMBER, 2018.  
 ILLINOIS PROFESSIONAL LAND SURVEYOR NO. 2971  
 LICENSE EXPIRES 10/31/2018  
 NOTE: THIS SURVEY WAS PREPARED USING INFORMATION PROVIDED ON FIDELITY NATIONAL TITLE INSURANCE COMPANY COMMITMENT NUMBER KA160075144 WITH AN EFFECTIVE DATE OF AUGUST 29, 2018.



REVISIONS:		DATE	BY	DESCRIPTION	DATE	BY	DESCRIPTION
08-31-18	D.J.			PER VILLAGE REVIEW			

DRAWN BY:	IM	DATE:	08-31-18
CHECKED BY:	WJM	DATE:	08-31-18
APPROVED BY:	WJM	DATE:	08-31-18

**DJA CIVIL ENGINEERS & SURVEYORS**  
 DAVE JOHNSON and ASSOCIATES, Ltd.  
 312 S. Hale Street Wheaton, IL 60187  
 ph. 630 752 8600 fax. 630 752 9556  
 e-mail: DJA@DJAonline.net

CLIENT:  
 TITLE:

ALTA SURVEY  
 LOT 7 AND 8 IN EAST WILSON STREET BUSINESS PARK  
 BATAVIA, ILLINOIS

SCALE: 1" = 20'  
 DATE: 08-31-18  
 JOB NO: 0000  
 SHEET 1 OF 1