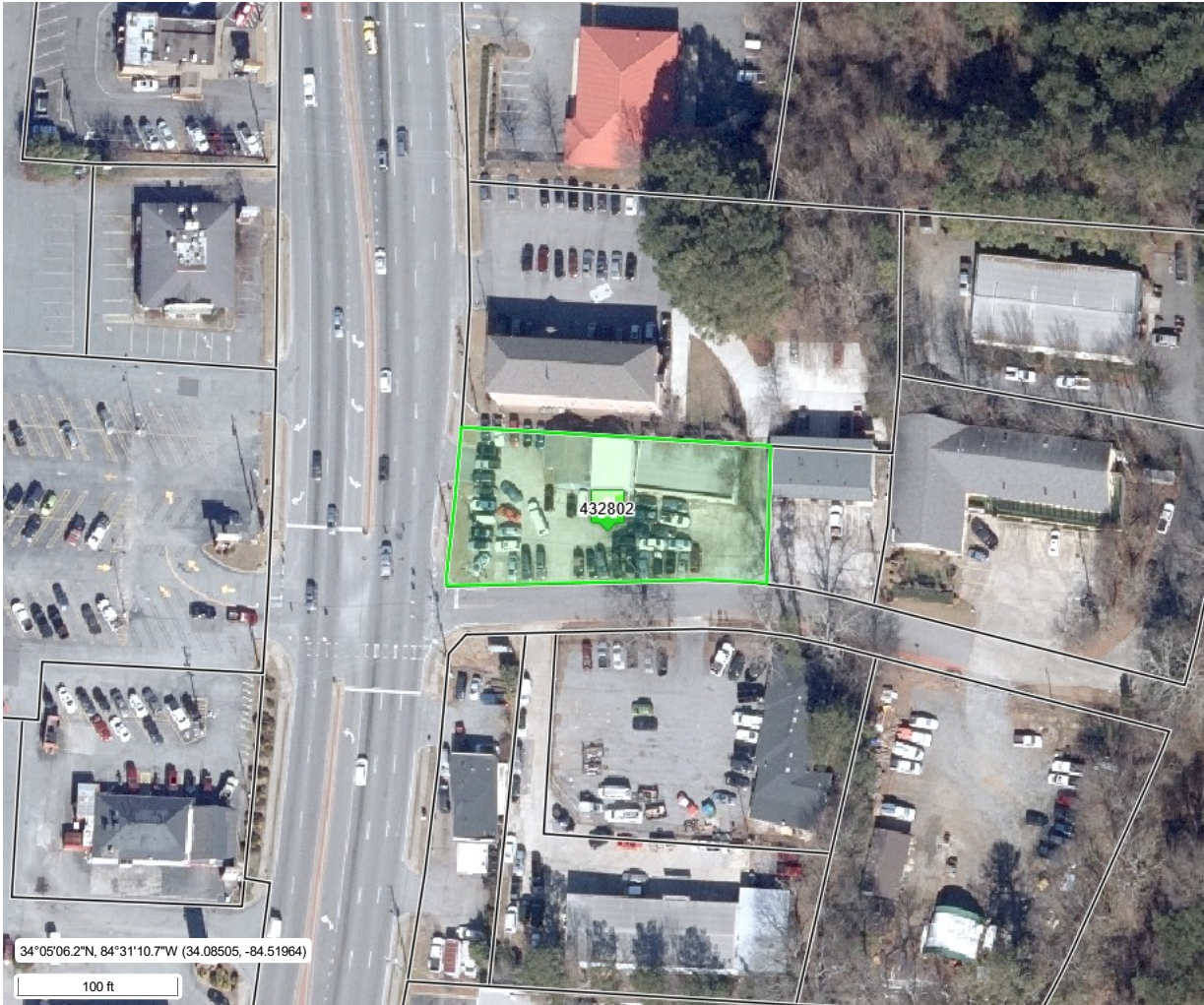


**9745 MAIN ST**Assessed Value **\$367,660**Parcel ID: **15N18A098**Owner: **GRIM GARY**Account: **96133149****Disclaimer**

All information on this site is prepared for the inventory of real property found within Cherokee County. All data is compiled from recorded deeds, plats, and other public records and data. Users of this data are hereby notified that the aforementioned public information sources should be consulted for verification of the information. All information contained herein was created for the Cherokee County's internal use. Cherokee County, its employees and agents make no warranty as to the correctness or accuracy of the information set forth on this site whether express or implied, in fact or in law, including without limitation the implied warranties of merchantability and fitness for a particular use.

If you have any questions about the data displayed on this website please contact the Cherokee County Assessor's Office at 678-493-6120. For technical problems related to this website, please contact the Cherokee County Assessor's Office at 678-493-6120.

Data last updated: 01/07/2025