

For Lease

Office

15,000 - 74,868 SF +/-

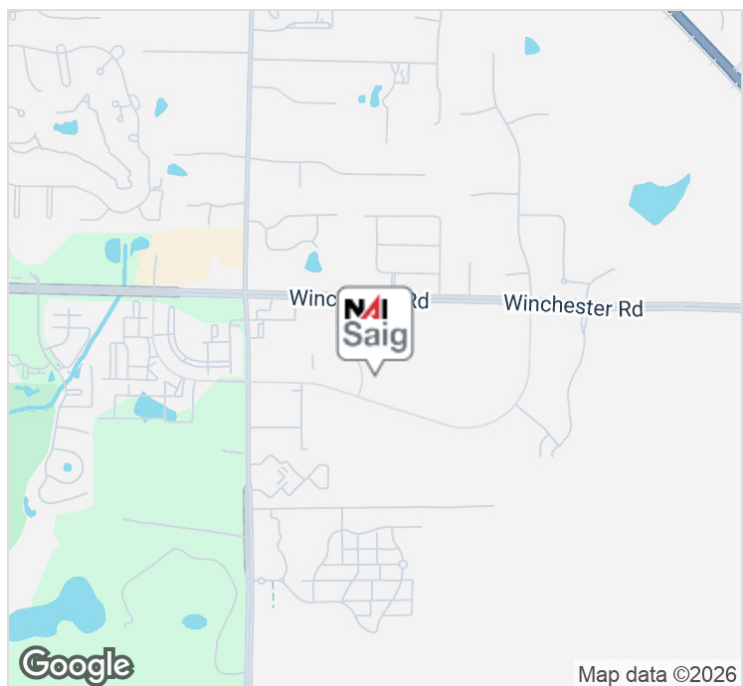


3742 Tyndale Dr

Germantown, Tennessee 38125

Property Features

- 15,000 -74,868 SF Office Available
- Two-story office building anchored by FedEx occupying 51% of the rentable area on the second floor
- Divisible space located on both first and second floor starting at 15,000 SF
- Built in 2003 and sits on 7.73 AC with over 300 parking spots available
- Well-located near the affluent suburbs of Collierville and Germantown, TN
- Quick access to Memphis International Airport
- Access to all major highways and the Mississippi state line
- Call for Lease Rate
- Scan QR Codes for Virtual Matterport Tour and Video



Map data ©2026

For more information:

Brian Califf, CCIM

901 526 3100 • bcaliff@saigcompany.com



NO WARRANTY OR REPRESENTATION, EXPRESS OR IMPLIED, IS MADE AS TO THE ACCURACY OF THE INFORMATION CONTAINED HEREIN, AND THE SAME IS SUBMITTED SUBJECT TO ERRORS, OMISSIONS, CHANGE OF PRICE, RENTAL OR OTHER CONDITIONS, PRIOR SALE, LEASE OR FINANCING, OR WITHDRAWAL WITHOUT NOTICE, AND OF ANY SPECIAL LISTING CONDITIONS IMPOSED BY OUR PRINCIPALS NO WARRANTIES OR REPRESENTATIONS ARE MADE AS TO THE CONDITION OF THE PROPERTY OR ANY HAZARDS CONTAINED THEREIN ARE ANY TO BE IMPLIED.

NAI Saig Company

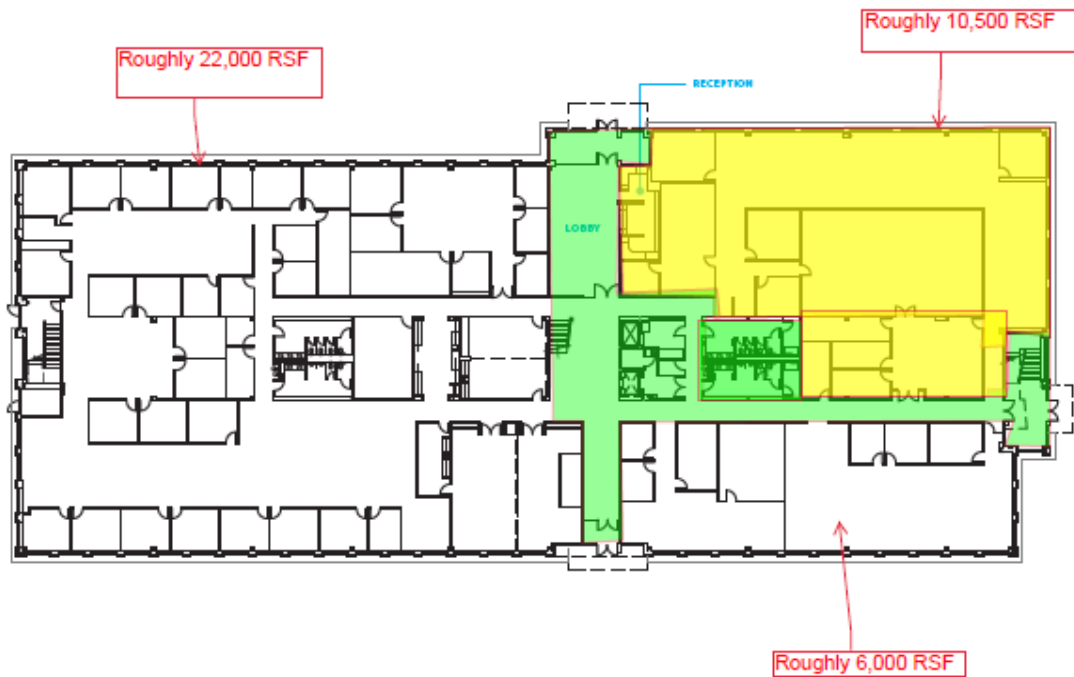
6263 Poplar Avenue Suite 150, Memphis, TN 38119

901 526 3100

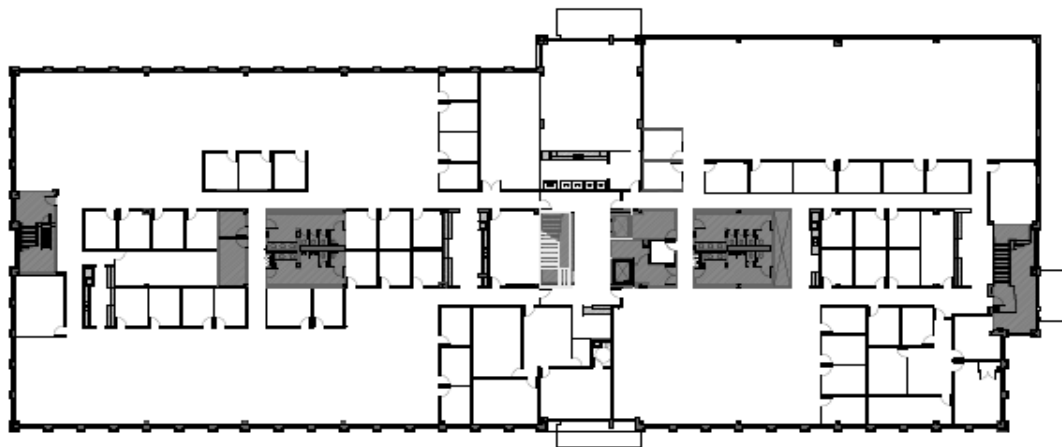
saigcompany.com



For Lease
Office



First Floor Plan



Second Floor Plan

For Lease
Office

