

**MEDICAL
OFFICE
LEASE**

114,414 SF

**MEDICAL
OFFICE
SPACE**

1,500 - 14,575 SF
AVAILABLE



TRANSWESTERN

REAL ESTATE
SERVICES

GREENHOUSE MEDICAL PLAZA

2051 Greenhouse Road | Houston, TX 77084



Building Amenities:

- 114,414 RSF three-story class A medical building
- Less than one mile from the Texas Medical Center West Campus
- Houston Methodist recently completed 100-bed patient tower due to significant population growth
- LEED certified, environmentally friendly building
- No medical restrictions
- Emergency Generator Ready
- 4.5/1000 - ample parking
- Free unreserved surface parking
- Reserved, covered parking: \$50/month

Availability:

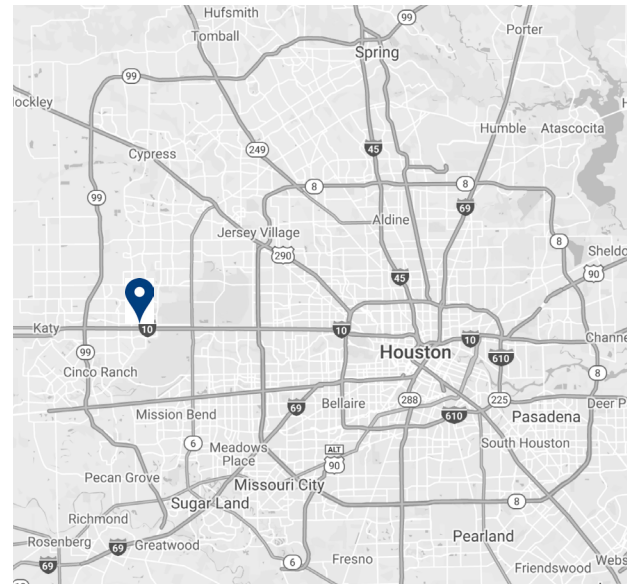
- Suite 210 - 14,575 SF
- Suite 270 - 3,315 SF
- Suite 295 - 2,858 SF

Lease Rate:

\$27.00/NNN

Opex Rate:

\$12.00/SF



Leasing Information:

**Justin
Brasell**
713.231.1595
Justin.Brasell@transwestern.com

**Heinrich
Cronje**
832.408.4067
Heinrich.Cronje@transwestern.com

The information provided herein was obtained from sources believed reliable; however, Transwestern makes no guarantees, warranties or representations as to the completeness of accuracy thereof. The presentation of this property is submitted subject to errors, omissions, change of price or conditions, prior to sale or lease, or withdrawal without notice. Copyright © 2024 Transwestern.

GREENHOUSE MEDICAL PLAZA

2051 Greenhouse Road | Houston, TX 77084



TRANSWESTERN

REAL ESTATE SERVICES



Leasing Information:

Justin Brasell
713.231.1595
Justin.Brasell@transwestern.com

Heinrich Cronje
832.408.4067
Heinrich.Cronje@transwestern.com

The information provided herein was obtained from sources believed reliable; however, Transwestern makes no guarantees, warranties or representations as to the completeness of accuracy thereof. The presentation of this property is submitted subject to errors, omissions, change of price or conditions, prior to sale or lease, or withdrawal without notice. Copyright © 2024 Transwestern.

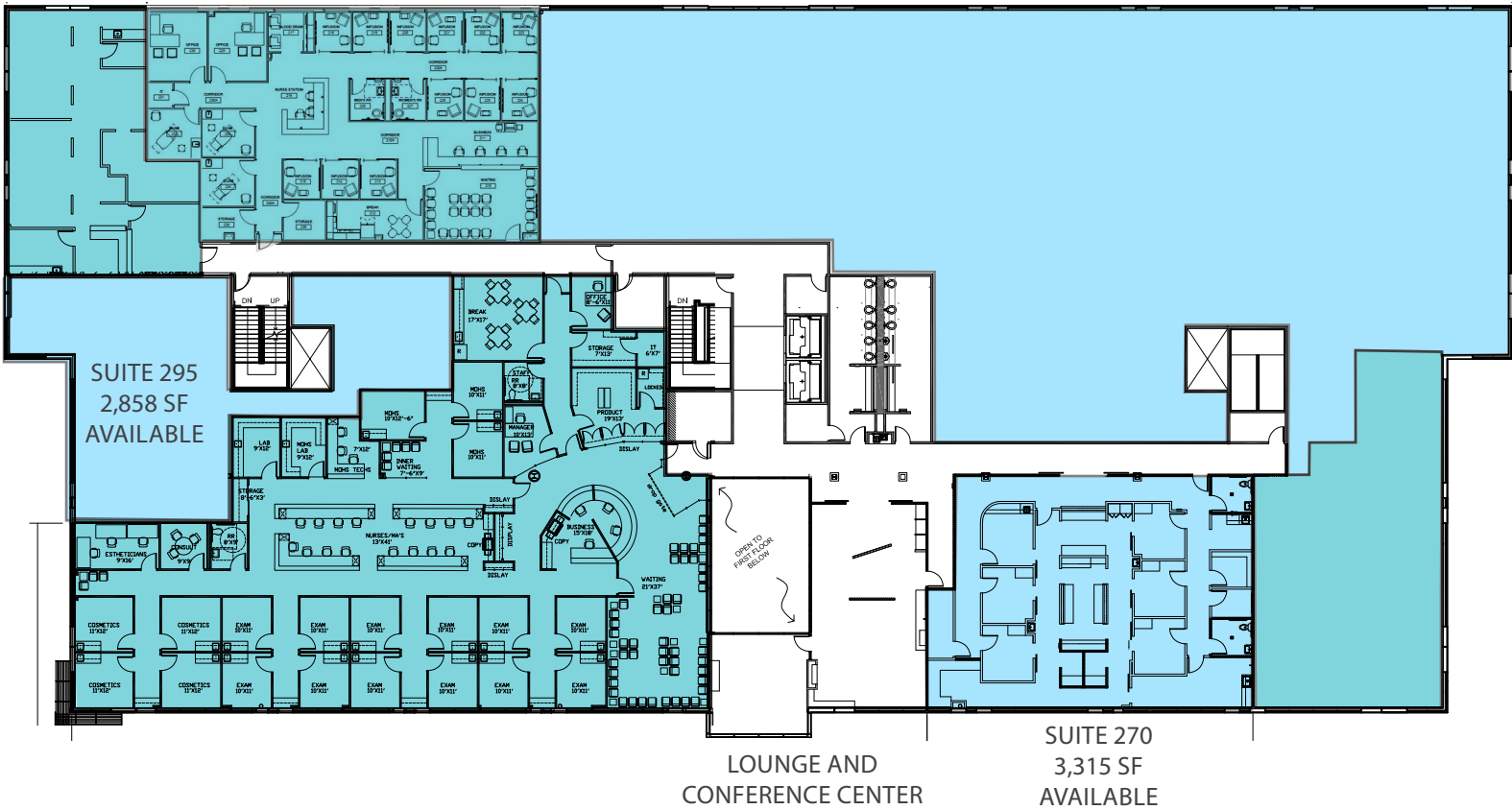
GREENHOUSE MEDICAL PLAZA

2051 Greenhouse Road | Houston, TX 77084



Second Floor

SUITE 220
14,575 SF
AVAILABLE



- Available
- Leased



Leasing Information:

Justin Brasell
713.231.1595
Justin.Brasell@transwestern.com

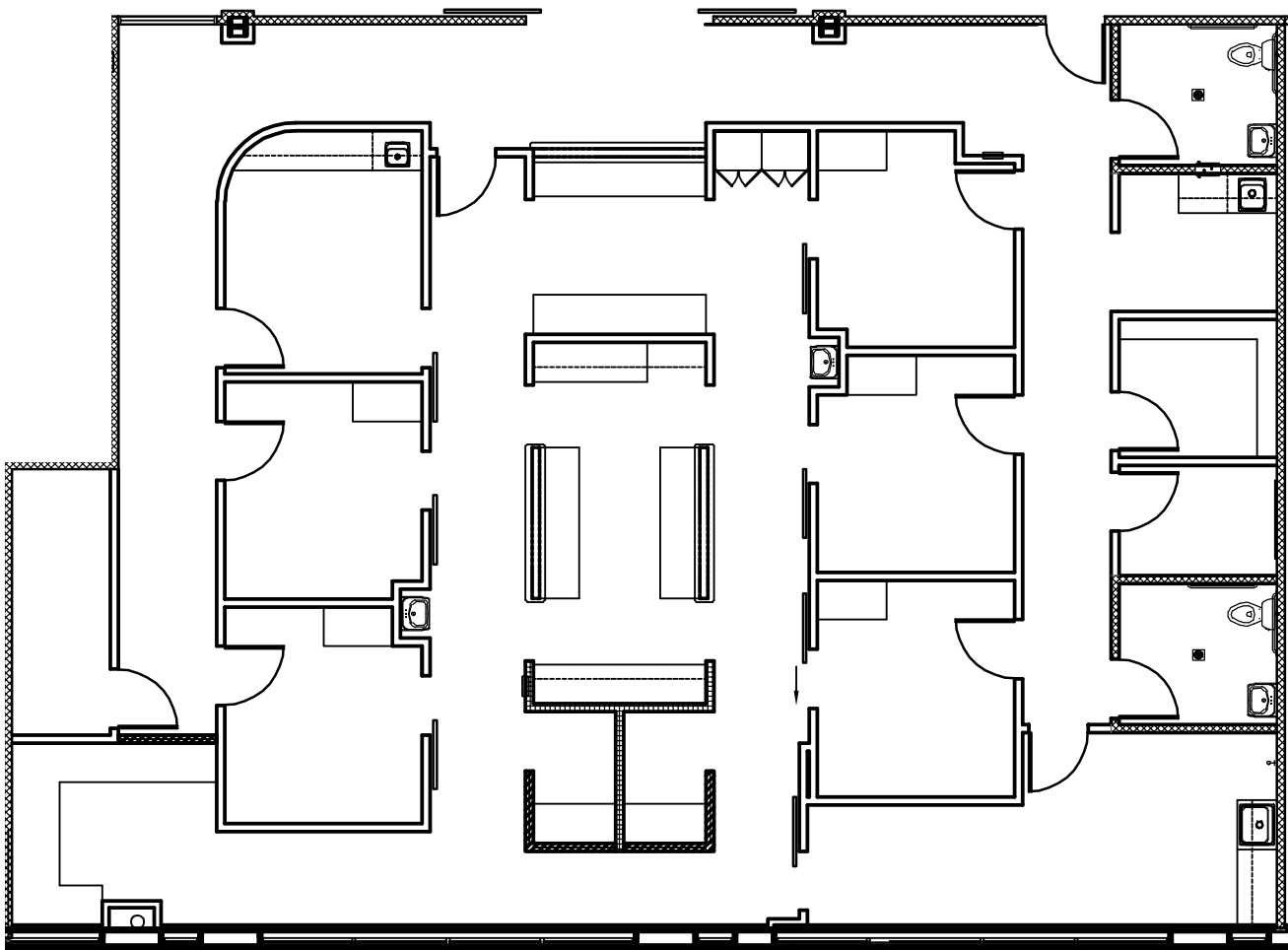
Heinrich Cronje
832.408.4067
Heinrich.Cronje@transwestern.com

The information provided herein was obtained from sources believed reliable; however, Transwestern makes no guarantees, warranties or representations as to the completeness of accuracy thereof. The presentation of this property is submitted subject to errors, omissions, change of price or conditions, prior to sale or lease, or withdrawal without notice. Copyright © 2022 Transwestern.

GREENHOUSE MEDICAL PLAZA

2051 Greenhouse Road | Houston, TX 77084

Second Floor
Suite 270
3,315 SF



Leasing Information:

Justin Brasell
713.231.1595
Justin.Brasell@transwestern.com

Heinrich Cronje
832.408.4067
Heinrich.Cronje@transwestern.com

The information provided herein was obtained from sources believed reliable; however, Transwestern makes no guarantees, warranties or representations as to the completeness of accuracy thereof. The presentation of this property is submitted subject to errors, omissions, change of price or conditions, prior to sale or lease, or withdrawal without notice. Copyright © 2022 Transwestern.