

# Ecclesiastical Realty LLC

121 & 123 West 138<sup>th</sup> St  
New York, NY 10030

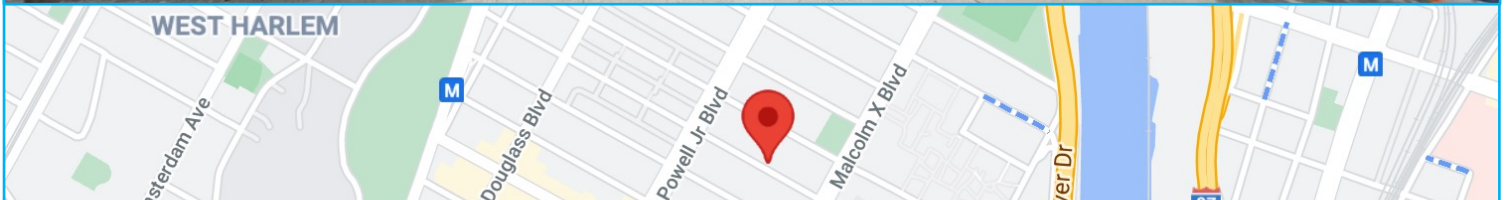
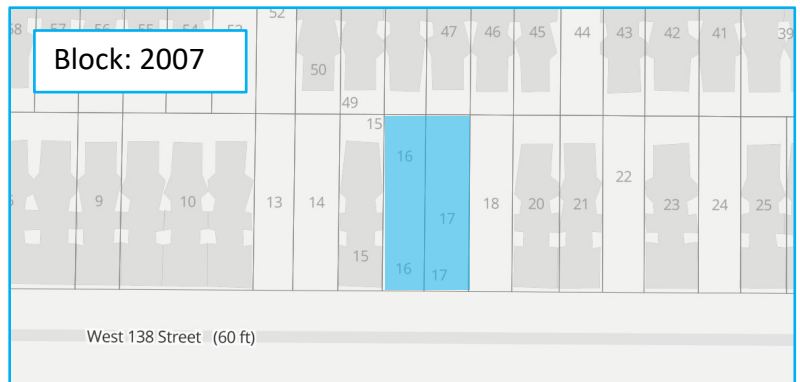
Vacant Land For Sale

Price: Upon Request

In the heart of Central Harlem and just blocks from the Harlem Hospital and Lenox Terrace, this development opportunity offers incredible location potential. The site has a maximum FAR of approximately 33,774 sf and 52 feet of frontage along 138<sup>th</sup> Street.

**Note:** 121 W 138<sup>th</sup> has a restrictive covenant for Community Facility. 123 W 138<sup>th</sup> is clear.

Combined Lot Size	5,196 sf	
Zoning	R7-2	
FAR	Com. Fac.	Resi.
	6.50	3.44
Max Zoning Floor Area	33,774 sf	17,874 sf
Frontage	52 feet	



An Exclusive Listing by Ecclesiastical Realty LLC. Please Contact:

Roget Lerner  
917-847-2681

Steve Bodden  
917-545-3843

Jack P. Lerner  
917-860-2323

No warranty or representation, express or implied, is made to the accuracy or completeness of the information contained herein, and same is submitted subject to errors, omissions, change or price, rental or other conditions, withdrawal without notice, and any special listing conditions imposed by the property owner(s). As applicable, we make no representation as to the condition of the property (or properties) in question.