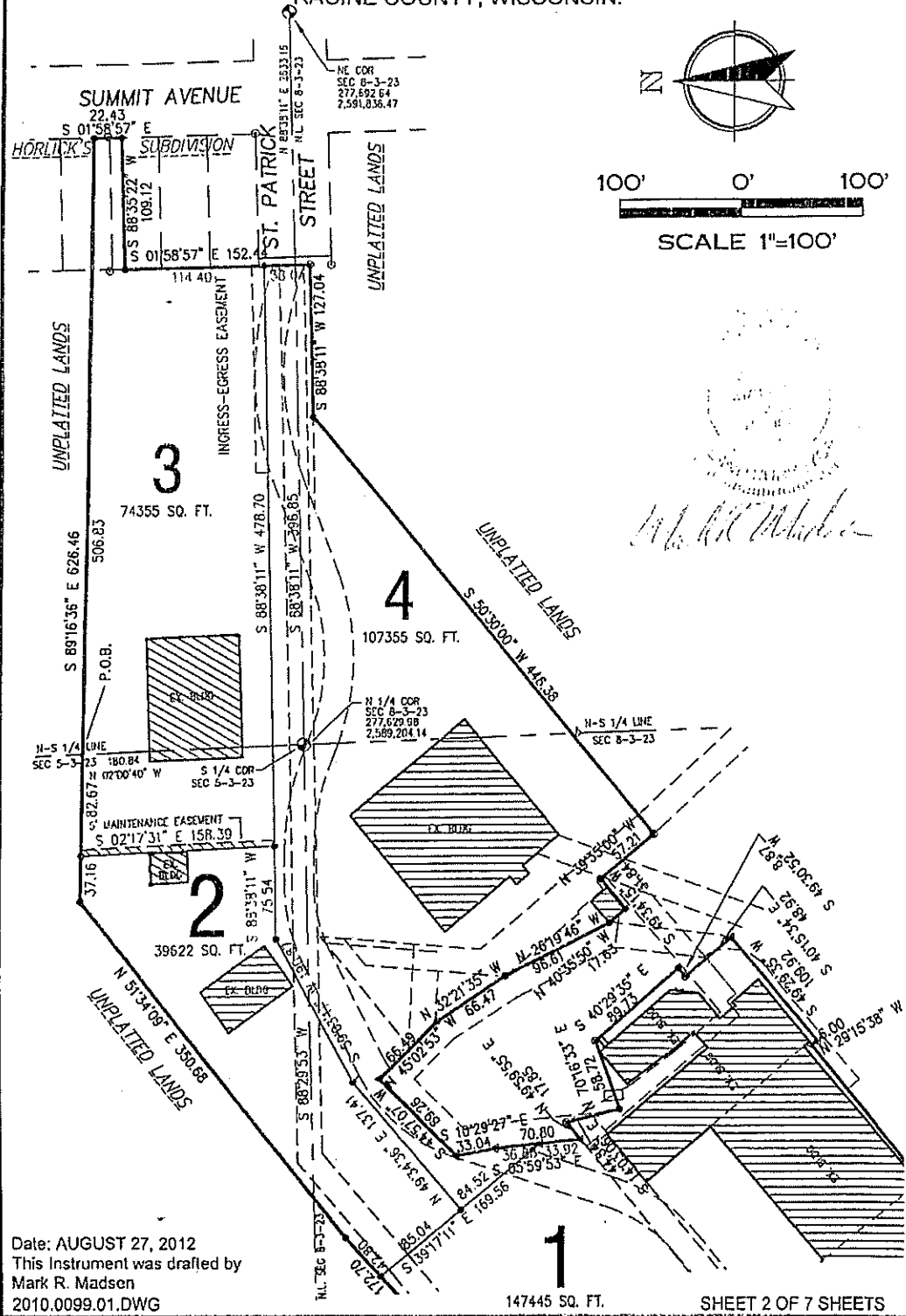


CERTIFIED SURVEY MAP NO. 3070

PART OF THE SE 1/4 OF THE SW 1/4 AND THE SW 1/4 OF THE SE 1/4 OF SECTION 5 AND PART OF THE NE 1/4 OF THE NW 1/4 AND THE NW 1/4 OF THE NE 1/4 OF SECTION 8, TOWNSHIP 3 NORTH, RANGE 23 EAST, IN THE CITY OF RACINE, RACINE COUNTY, WISCONSIN.



Date: AUGUST 27, 2012  
 This Instrument was drafted by  
 Mark R. Madsen  
 2010.0099.01.DWG

147445 SQ. FT. SHEET 2 OF 7 SHEETS