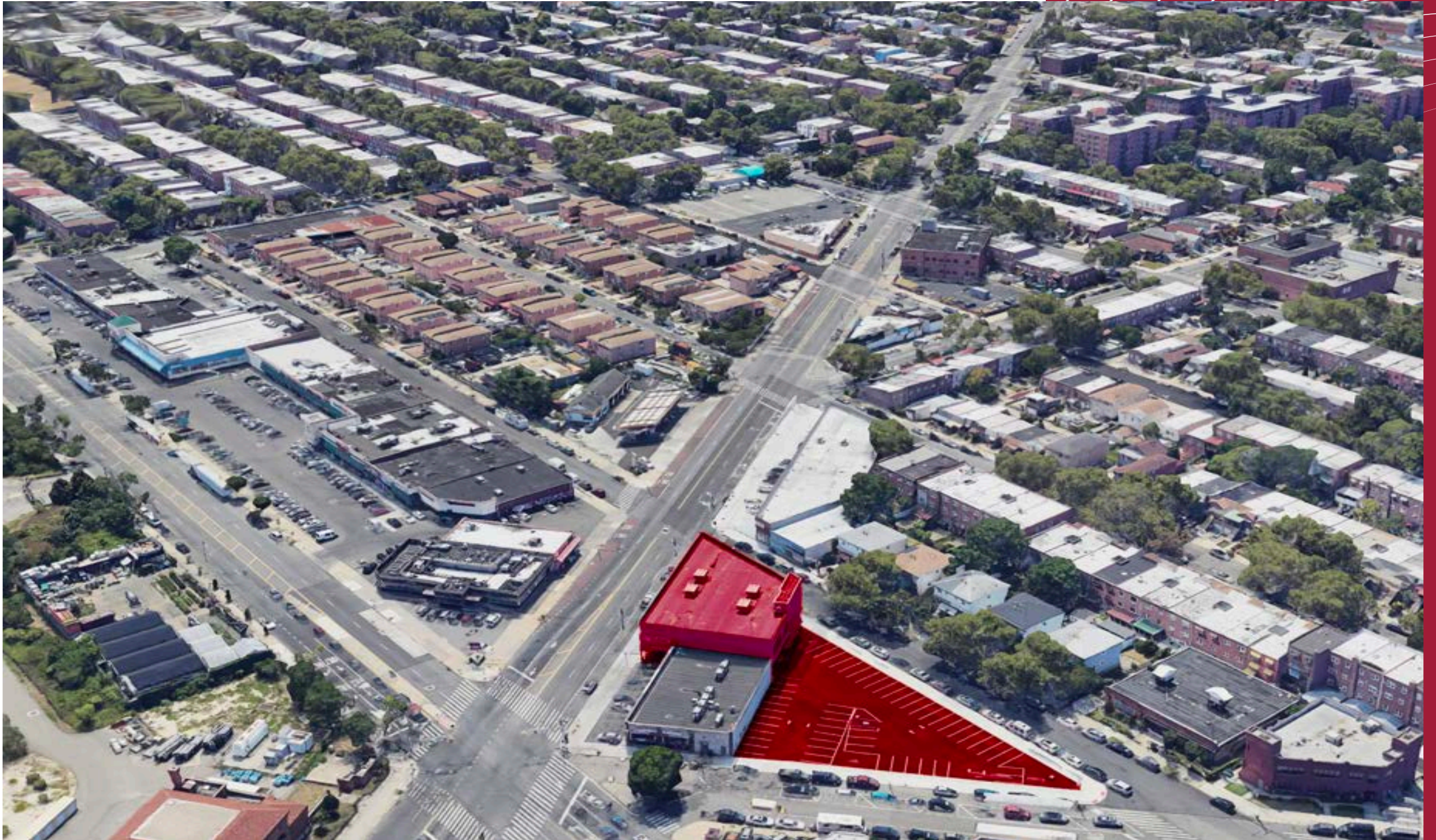


5901
FLATLANDS
AVENUE
BROOKLYN



Brand New
Building
With Elevator

5 Way Intersection **57** Parking Spaces





FLATLANDS AVENUE LOCATION & HIGHLIGHTS

Situated at the intersection of Georgetown, Flatlands, and Canarsie, this brand new two-story commercial building offers a total of 17,000 SF of versatile space, meticulously designed to accommodate a wide range of businesses. With its modern architecture, prime location, and customizable features, this property presents an exceptional opportunity for entrepreneurs and enterprises looking to establish or expand their presence in Brooklyn's thriving commercial landscape. Spanning across two stories, this 17,000 SF building provides ample room for various business operations, from retail showrooms to office headquarters. The expansive floor plan offers flexibility and adaptability to suit your specific needs.

HIGHLIGHTS

- 17,000 SF of usable space with 12 FT open ceilings across two well-designed floors
- Exterior facades designed to stand out and attract attention
- Ample on-site exclusive parking for tenants and visitors
- Open floor plans allowing for flexible interior configurations
- Abundant windows throughout, providing ample natural light and a vibrant atmosphere
- Panoramic views of the surrounding neighborhood
- Brand New HVAC & Elevator installed

SPACE FEATURES



Ground:
7,323 SF



Second:
9,773 SF



Frontage:
141 FT



Asking:
Upon Request



Brand New HVAC & Elevator installed



Open floor plans allowing for flexible interior configurations



Exterior facades designed to stand out and attract attention

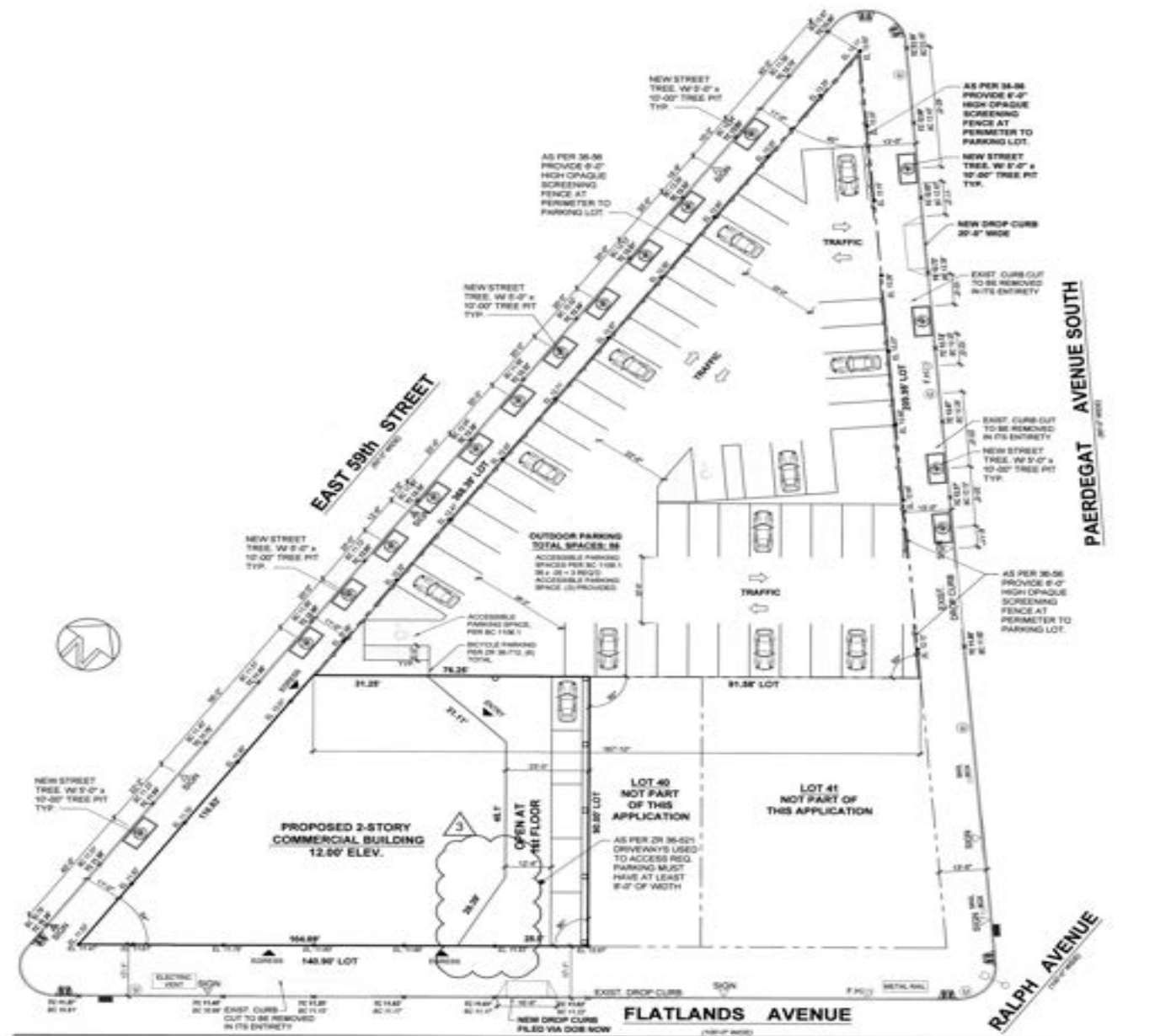


17,000+ SF of usable space across two well-designed floors

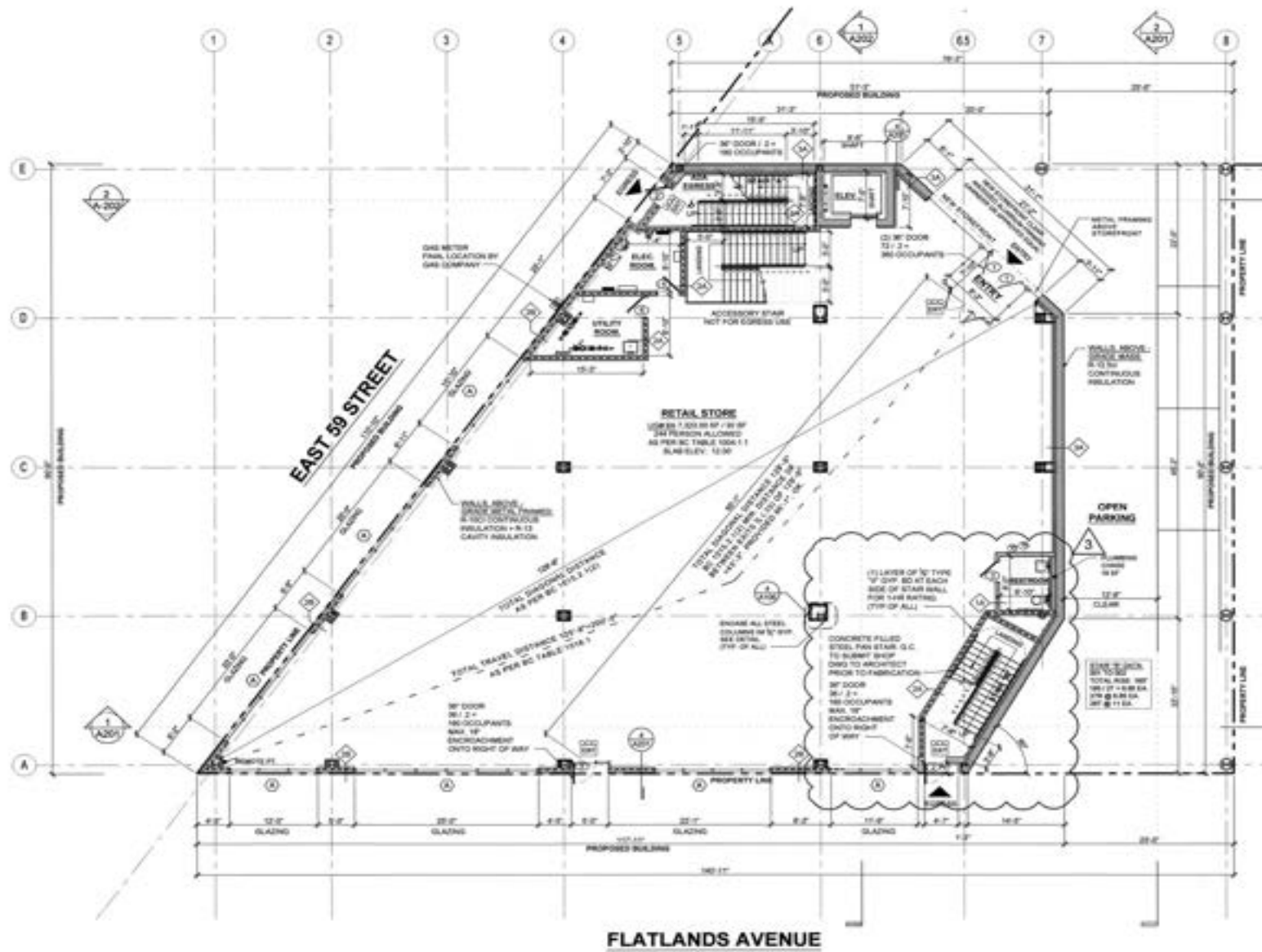


57 Parking Spaces

SITE PLAN



SECOND FLOOR FLOOR PLAN

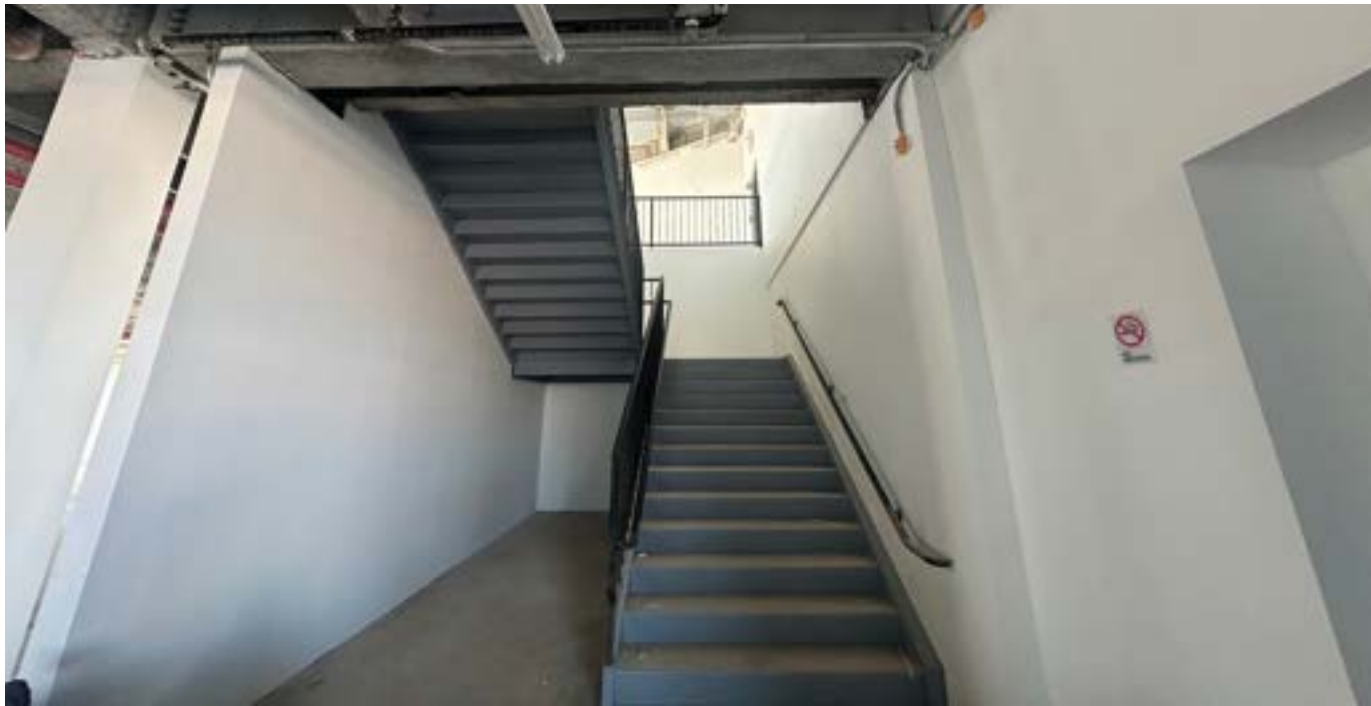


FLATLANDS AVENUE

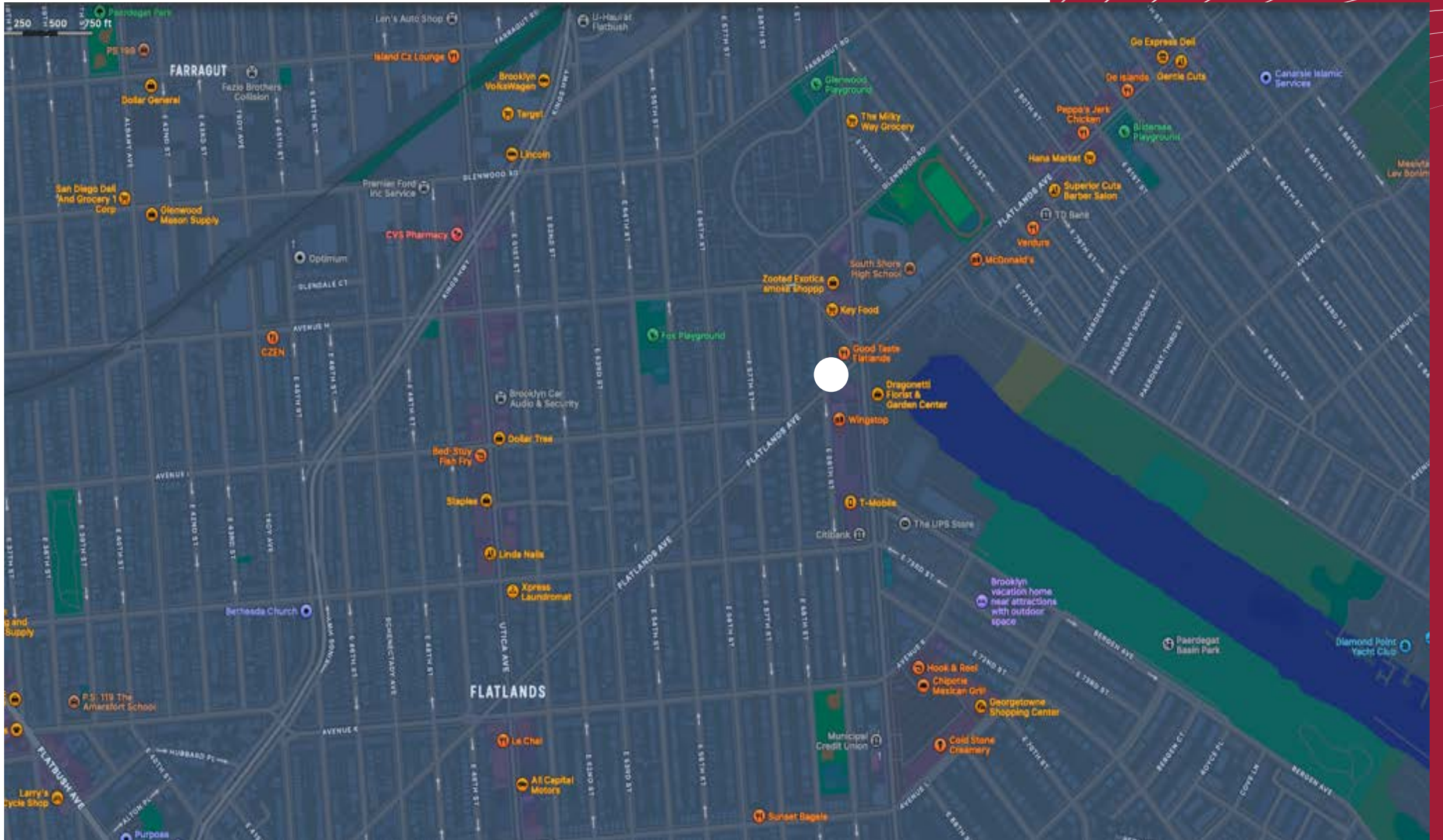


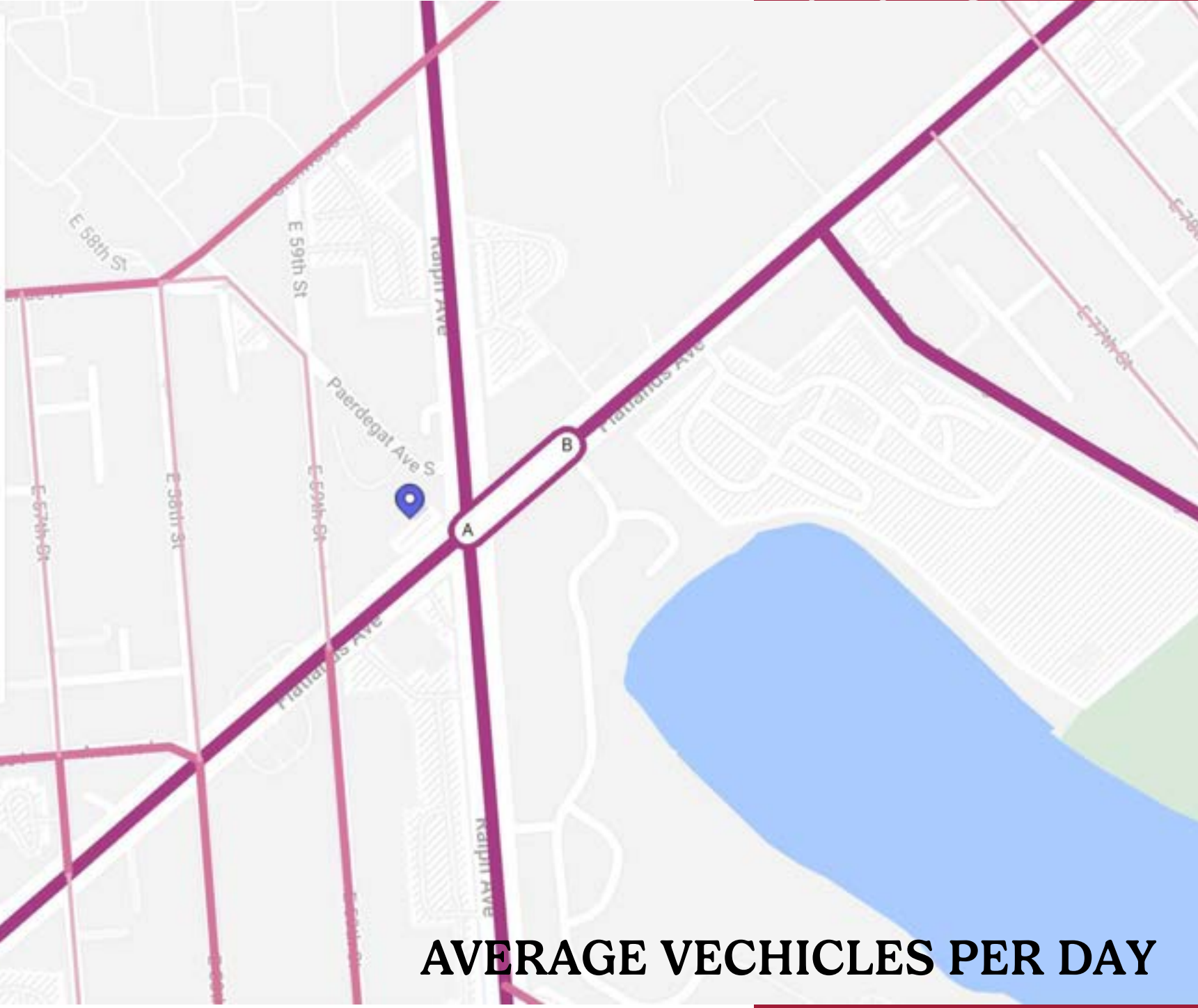
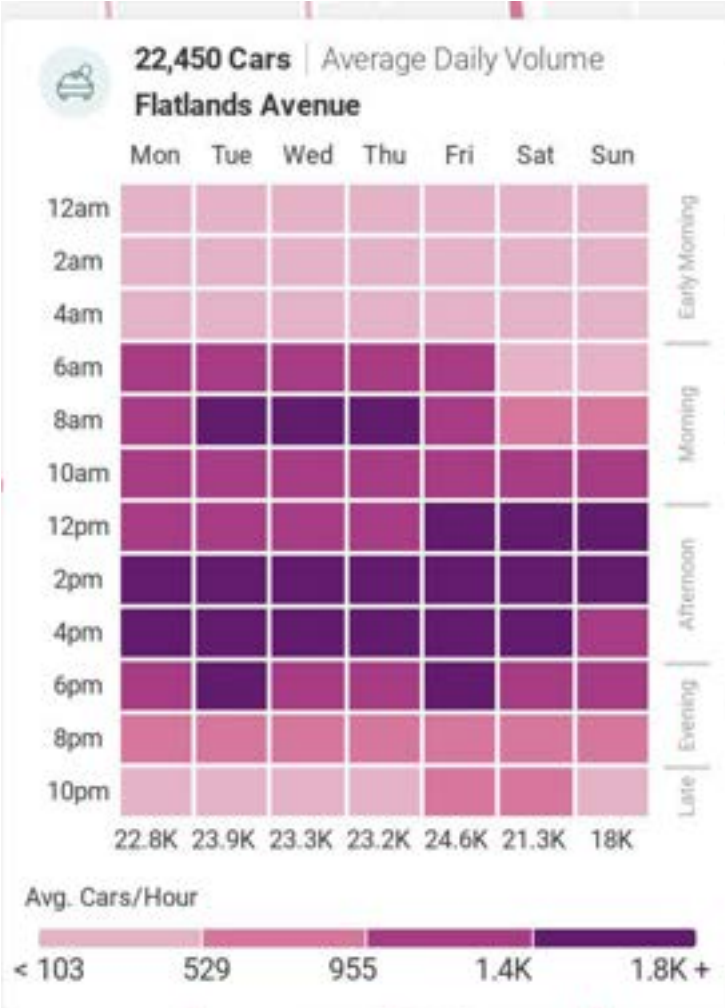




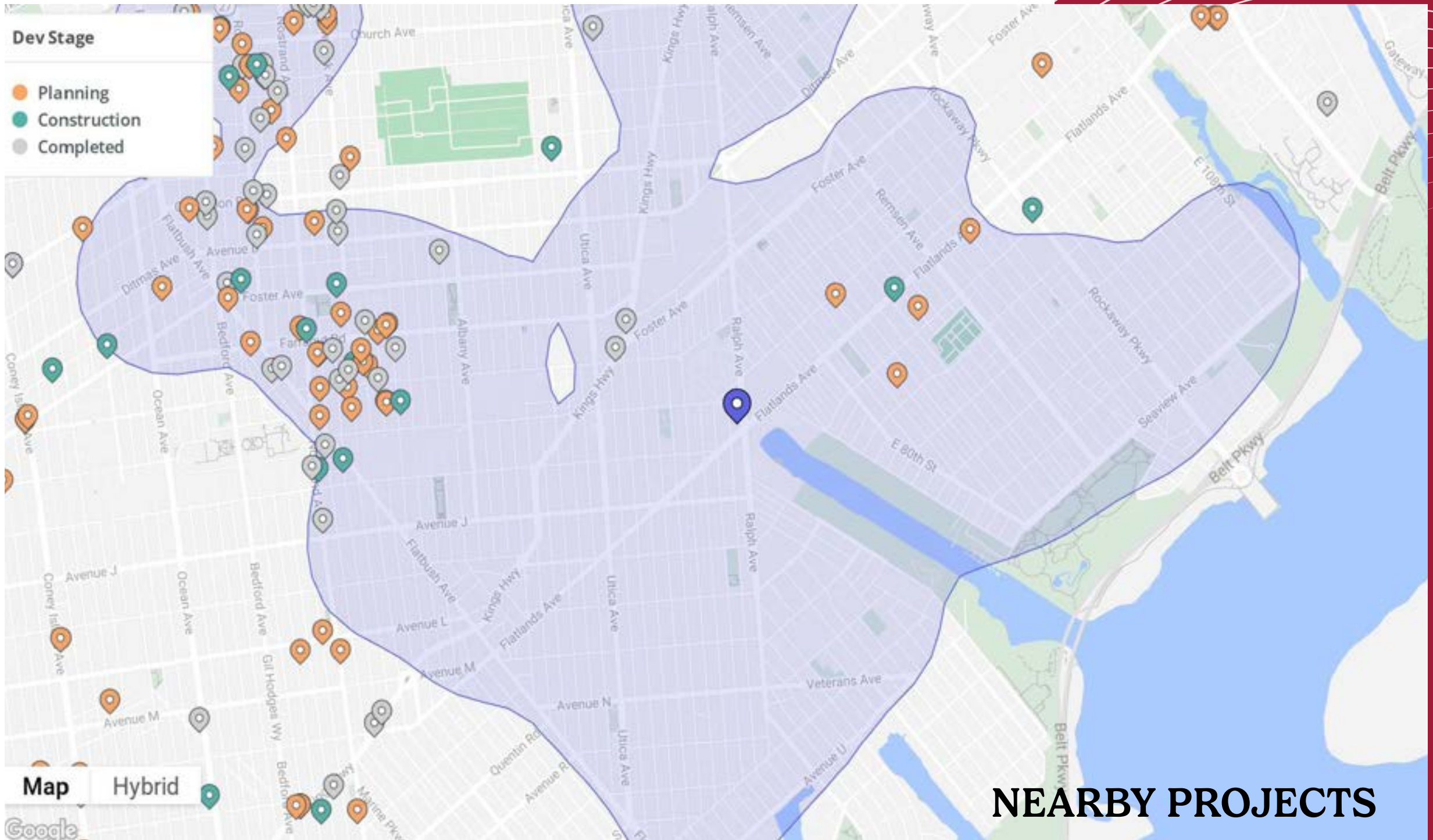








AVERAGE VECHICLES PER DAY



NEARBY PROJECTS

CONTACT US:

+1 (646) 389 8704

ROD MIREA

rmirea@rwrealestategroup.com

NATHAN WILSON

nathan.wilson@rwrealestategroup.com

**5901
FLATLANDS
AVENUE**

BROOKLYN, NY 11234

RW