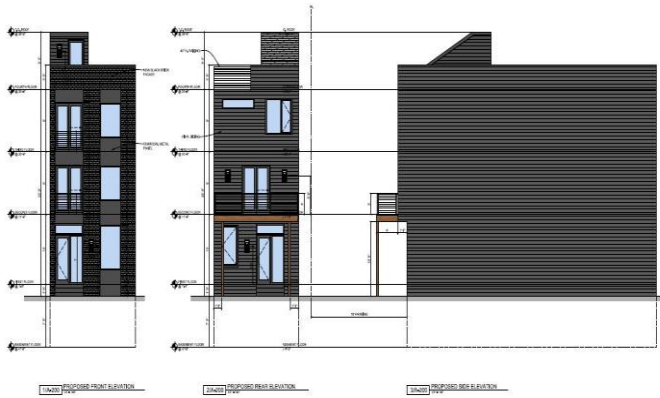


# FOR SALE

## 2050 ELLSWORTH ST | POINT BREEZE

### LIST PRICE: \$450,000



#### Features:

- Approved Plans for a 3-Story New Construction with Rooftop Deck & Rear Parking 🏠
- Includes 4 Bedrooms, 3.5 Bathrooms, & Finished Basement for Added Space 🛏️🚿
- Customize Your Home from Top to Bottom with Your Preferred Finishes 🧐
- 10-Year Tax Abatement Applied for + 1-Year Builder Warranty At Settlement 🛡️
- Qualifies for CRA Financing — No Mortgage Insurance Required 💰
- Prime Location With 88 Walk Score, & 90 Bike Score 🚶♂️🚲🚶♀️
- Surrounded By Dining, Shopping, Parks, & Schools for Ultimate Convenience 🗺️

#### Details:

- Lot Dimension: 16.00 x 65.00
- Lot Size: 1,040 Sq Ft
- Zoning: RSA-5
- Annual Taxes: \$3,079

Presented by MARIA QUATTRONE



**RE/MAX @ HOME**

**Maria Quattrone & Associates**

2054 South Street, Philadelphia, PA 19146

Office: 215.607.3535

Call or Text: 215.607.3524

[thelistingteam@liveloveathome.com](mailto:thelistingteam@liveloveathome.com)

[www.mgrealestate.com](http://www.mgrealestate.com)

