

**11475 – 11477 OLDE CABIN ROAD**  
**ST. LOUIS, MO 63141**



## Contact Information

**Michael Cozad**  
(314) 646-3307  
mcozad@cozadgroup.com

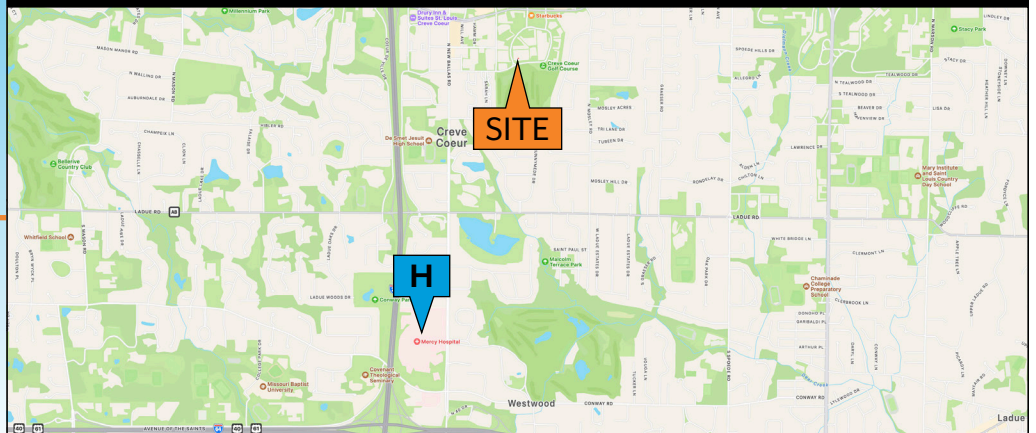
**Matt Hirsch**  
(314) 646-3305  
mhirsch@mdrea.com



**Cozad Commercial Real Estate**  
**MD Real Estate Advisors, LLC**  
16 Sunnen Drive, Ste. 164  
St. Louis, Missouri 63143

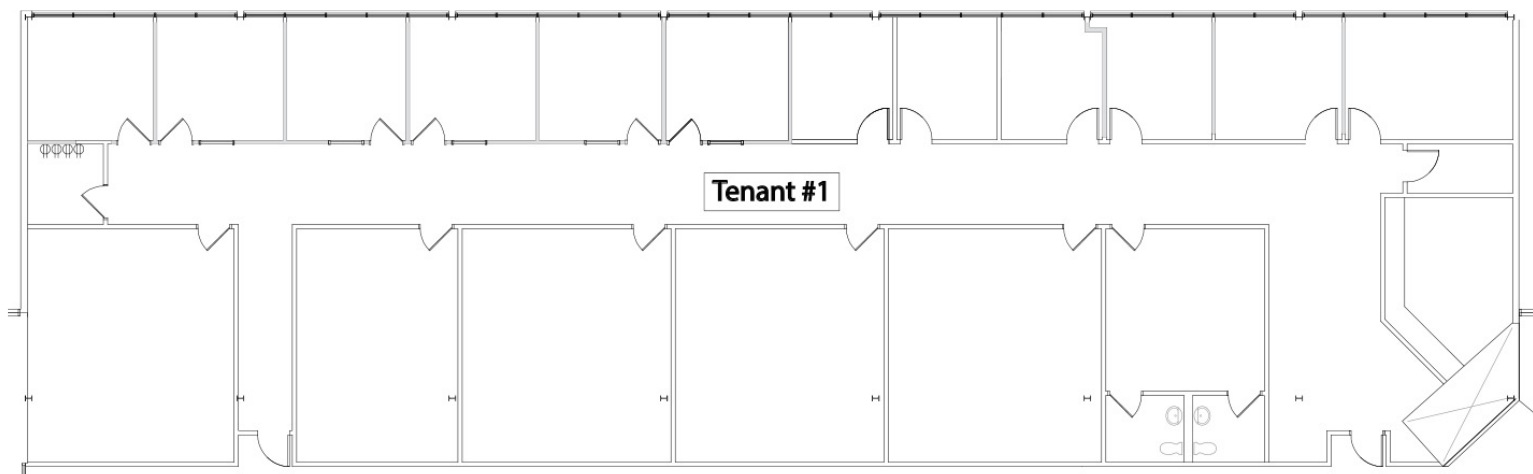
## PROPERTY HIGHLIGHTS

- ▶ Office / Medical Office suites available
  - Suite 11477-205: 6,776 SF
  - Suite 11475-220: 3,014 SF
  - Suite 11477-320: 2,893 SF
  - Suite 11477-400: 6,817 SF
- ▶ Located in Creve Coeur Office Park near I-270 and Olive
- ▶ Views overlooking Creve Coeur Golf Course
- ▶ Abundant surface parking
- ▶ **Lease Rate: \$21.95/sf FS**



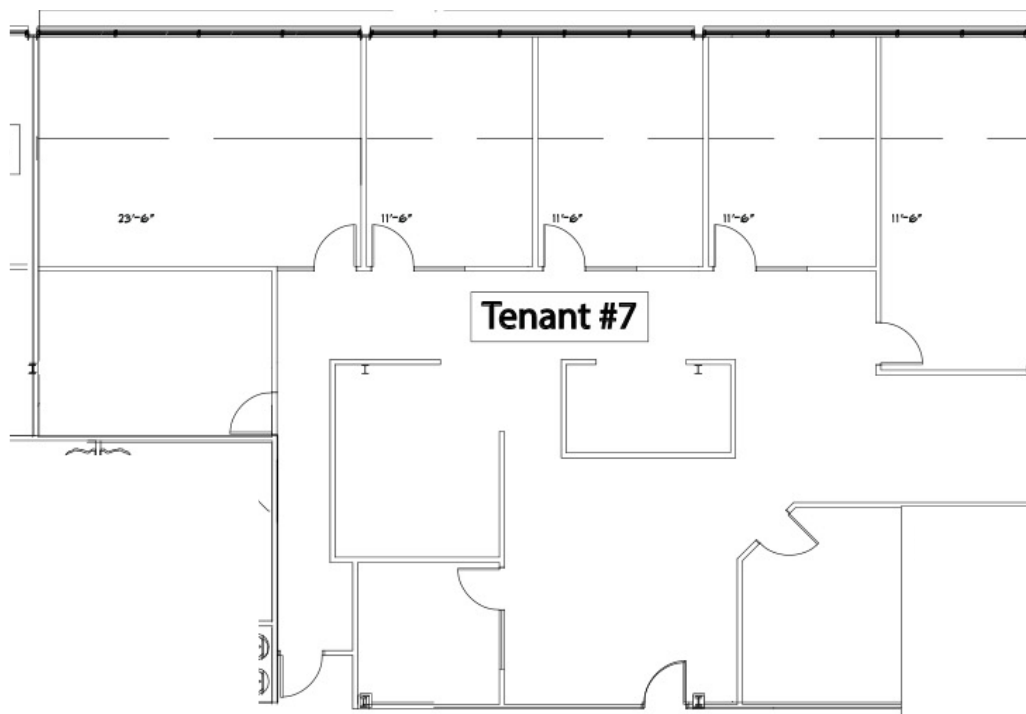
# 11475 – 11477 OLDE CABIN ROAD

ST. LOUIS, MO 63141



Tenant #1

11477-205  
6,776 SF

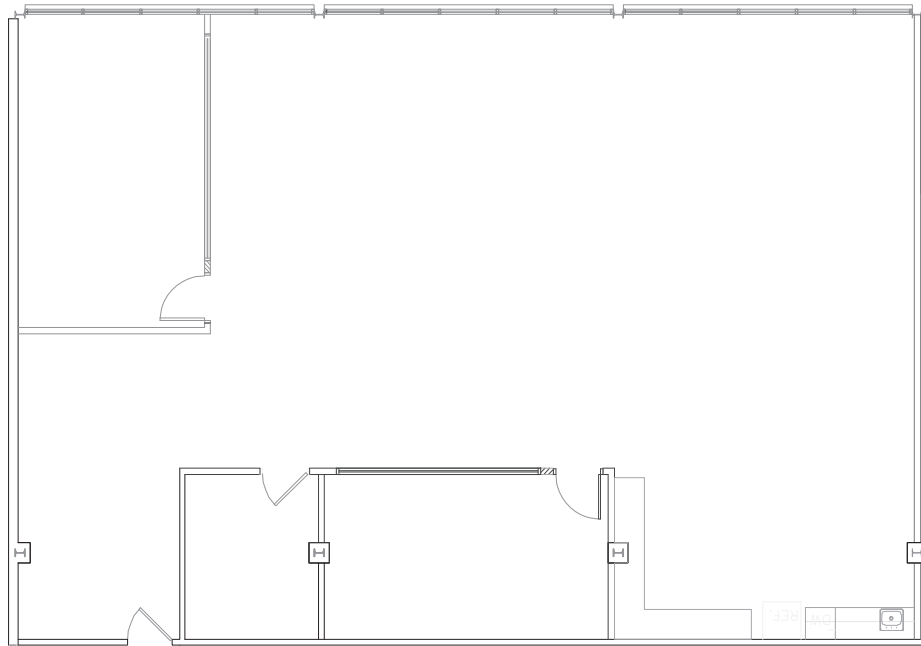


Tenant #7

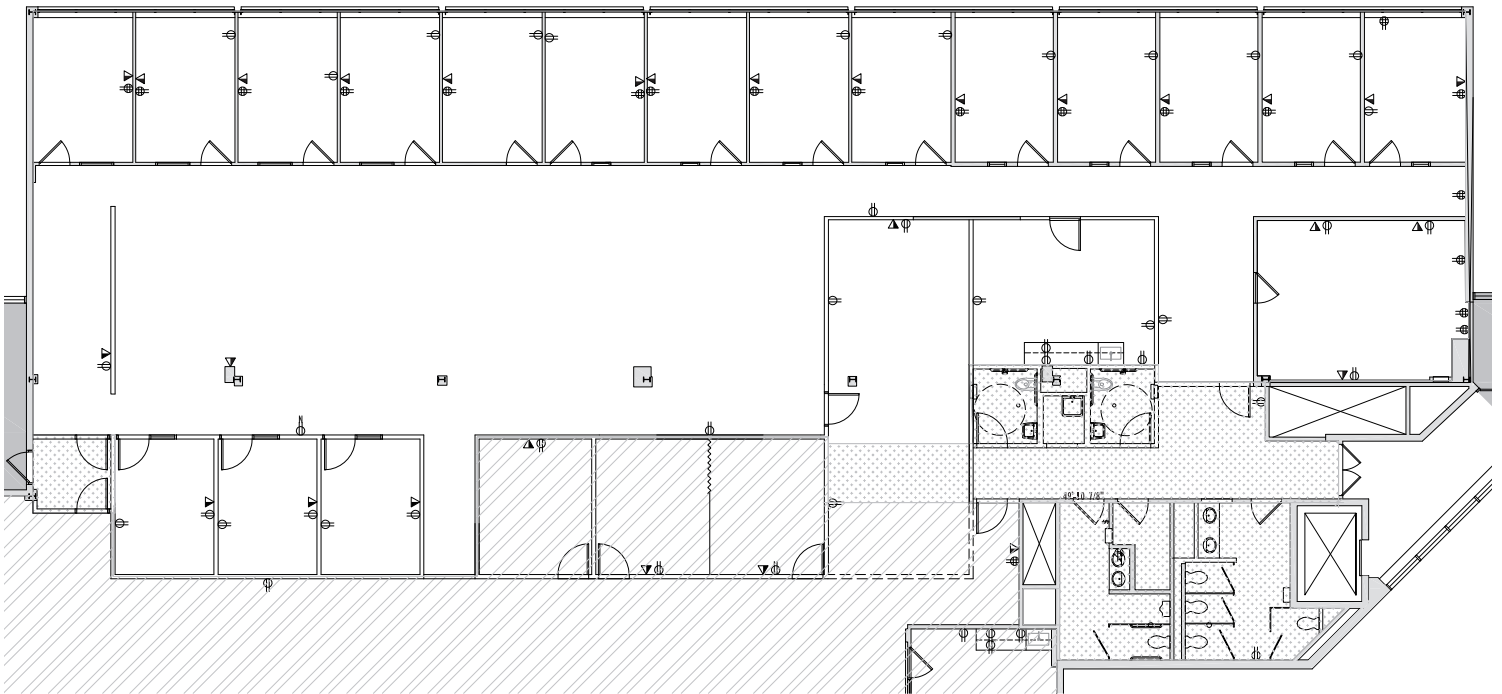
11475-220  
3,014 SF

# 11475 – 11477 OLDE CABIN ROAD

ST. LOUIS, MO 63141



11477-320  
2,893 SF



11477-400  
6,817 SF

Information herein has been obtained from the owner of the property or from other sources. The brokers do not guarantee the accuracy of this information. Sellers and brokers make no representation as to the environmental or other conditions of the property and that purchaser investigate fully.

**COZAD COMMERCIAL REAL ESTATE**  
**MD REAL ESTATE ADVISORS**  
A subsidiary of Cozad Commercial Real Estate, Ltd.  
16 Sunnen Dr., Ste. 164 • St. Louis, MO 63143