



305 E  
MAPLE RD.

RH COLLECTIVE



# 305 E MAPLE RD.

Troy, MI

\$495,000



Stunning Fully Renovated Office in Prime Troy Location - Perfect for Your Business! Located on prime E Maple Road, this meticulously renovated office building offers incredible exposure and is ideally situated near major freeways and local businesses. Spanning nearly 2,000 square feet.

1,937 Sq. Ft  
Year Built 1947  
4 Private Offices



**RH** *Collective*  
REAL ESTATE SALES TEAM



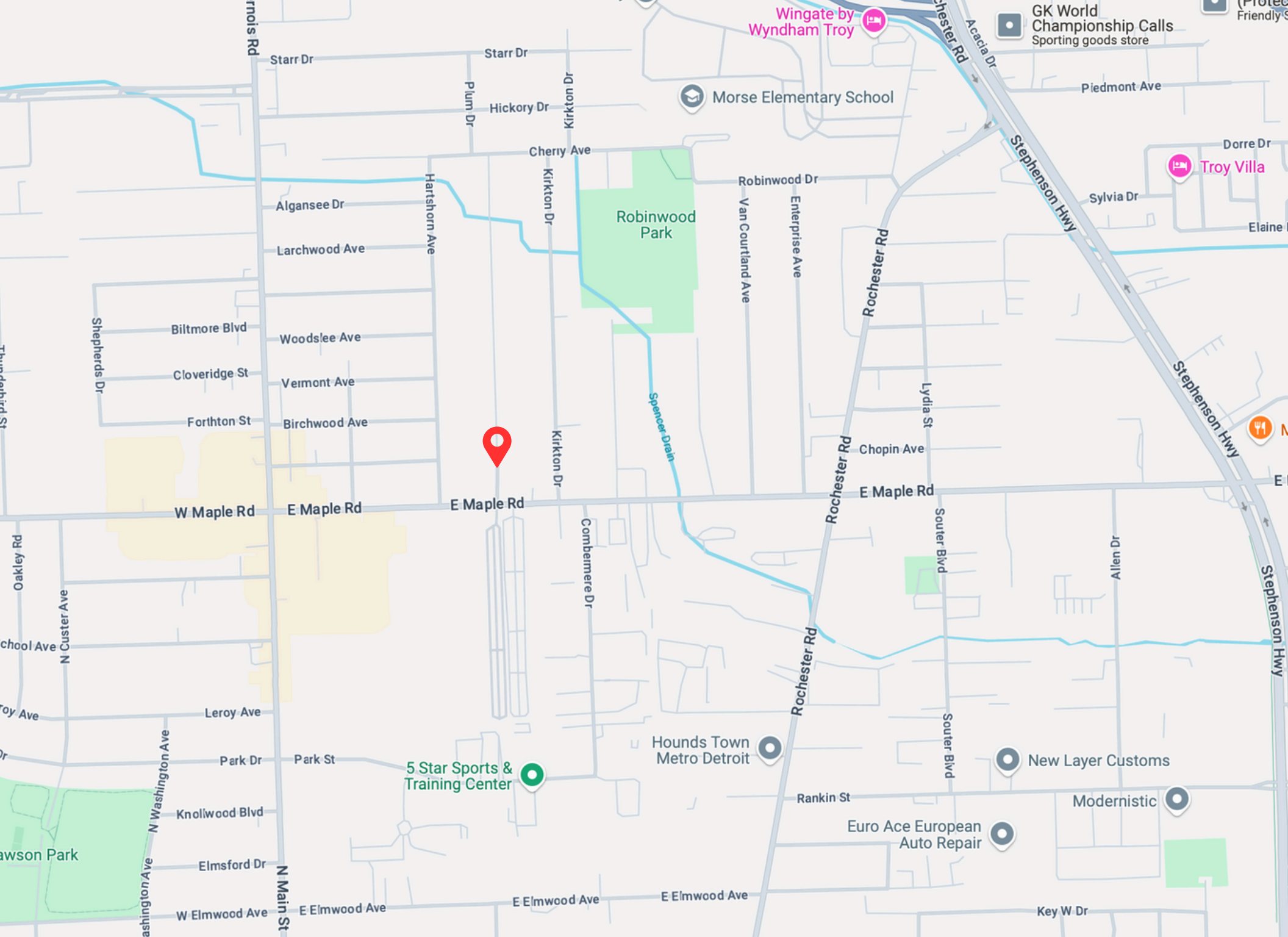


RH





Every detail has been thoughtfully updated, from the fresh exterior and interior paint to the new roof and vinyl windows throughout. The building features three convenient entrances, ensuring easy access for both clients and staff. In addition to two front parking spaces, there's a rear lot with 10-12 spaces, plus a small grass area that could be converted into additional parking if needed. Inside, the space offers a large office with vaulted ceilings, oversized windows, and custom built-in shelving, creating an open and inviting atmosphere. High-end finishes, including luxury plank flooring, modern light fixtures, and custom window treatments, elevate the entire space. The office also includes updated mechanicals, ensuring an energy-efficient and comfortable environment. The lobby sets the tone for the space with a custom front desk with quartz countertops, a spacious waiting area that can accommodate multiple desks, and two beautifully renovated bathrooms featuring modern vanities, LED-lit mirrors, and elegant porcelain tile. In addition to the large office, the building boasts four offices with doors for privacy and a spacious conference room with an original fireplace perfect for meetings and presentations. The kitchen, located behind a separate door for privacy, offers custom cabinetry, quartz countertops, an extra-deep sink, and ample space for a refrigerator. A charming bar seating area by the window completes this beautiful space. With prime location, excellent exposure, and luxury finishes throughout, this office has everything you need to take your business to the next level. It's ready to move in and thrive!

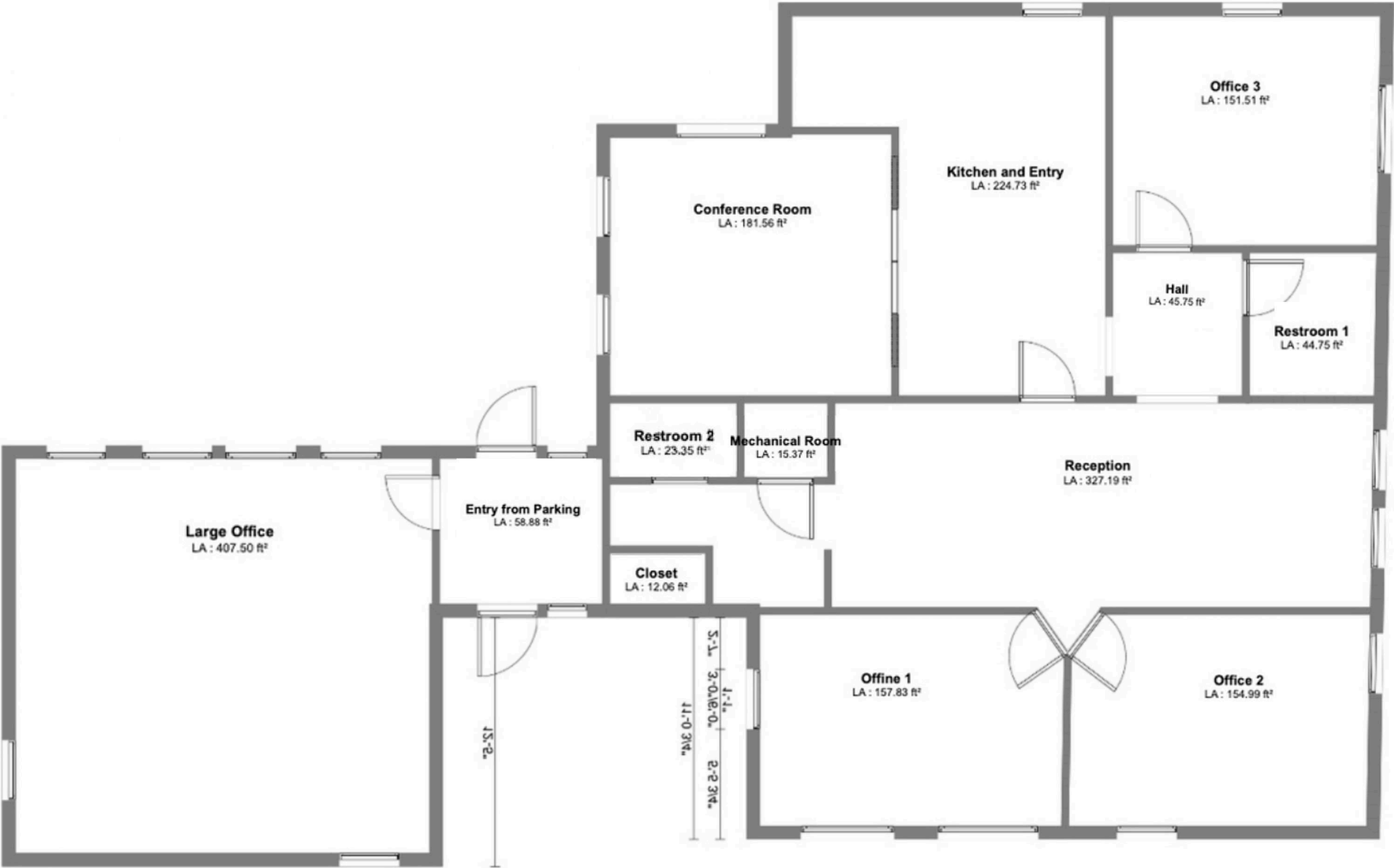


East Maple Rd.

Front Entrance

Side

Side



Back Entrance