



N. Columbus Retail Center

7465 Blackmon Road
Columbus, Georgia 31909

Property Highlights

- Newly constructed retail center
- Prime North Columbus location
- Modified gross lease
- Build-to-suit option

Property Overview

Premier leasing opportunity in North Columbus Retail Center. This under-construction retail center features six units, each leasing for \$23/SF/YR plus CAM charges with a modified gross lease. Build-to-suit options are available, and spaces can be combined to accommodate larger tenants.

Offering Summary

Lease Rate:	\$23.00 SF/yr (NNN)
Building Size:	+/- 8,640 SF
Available SF:	+/- 1,080 - 5,400 SF
Lot Size:	+/- 1.06 Acres

Demographics

	0.3 Miles	0.5 Miles	1 Mile
Total Households	279	1,127	2,821
Total Population	754	2,907	7,096

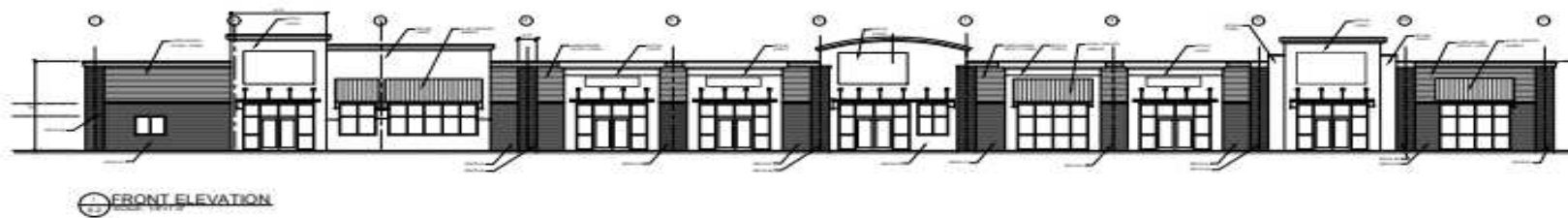
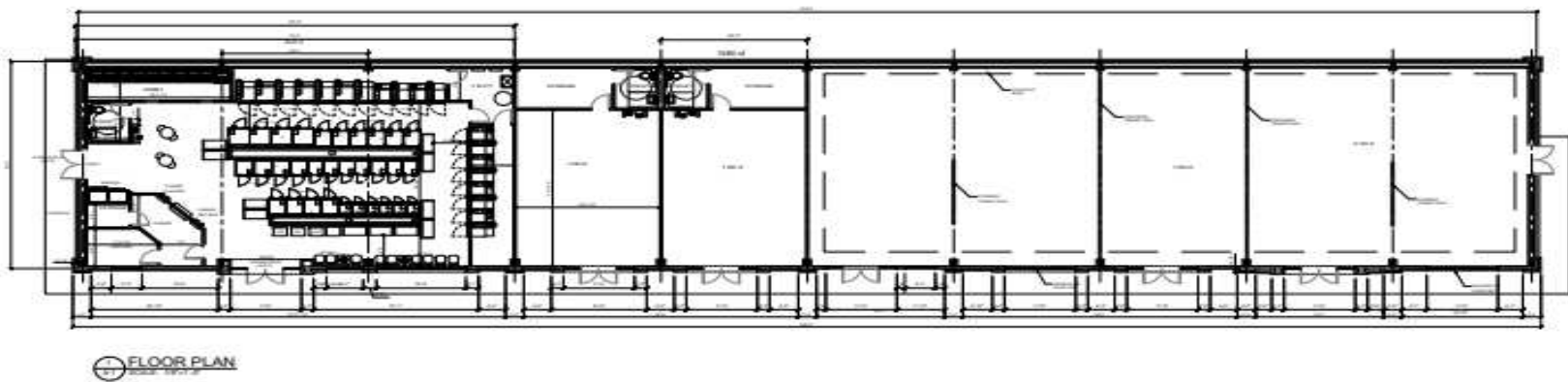
For More Information

Lakshmi Karthik

O: 706 660 5418
lkarthik@g2cre.com

Amy D. Gill, MICP, MRP

O: 706 660 5418 x1009
agill@g2cre.com | GA #381793



Lease Information

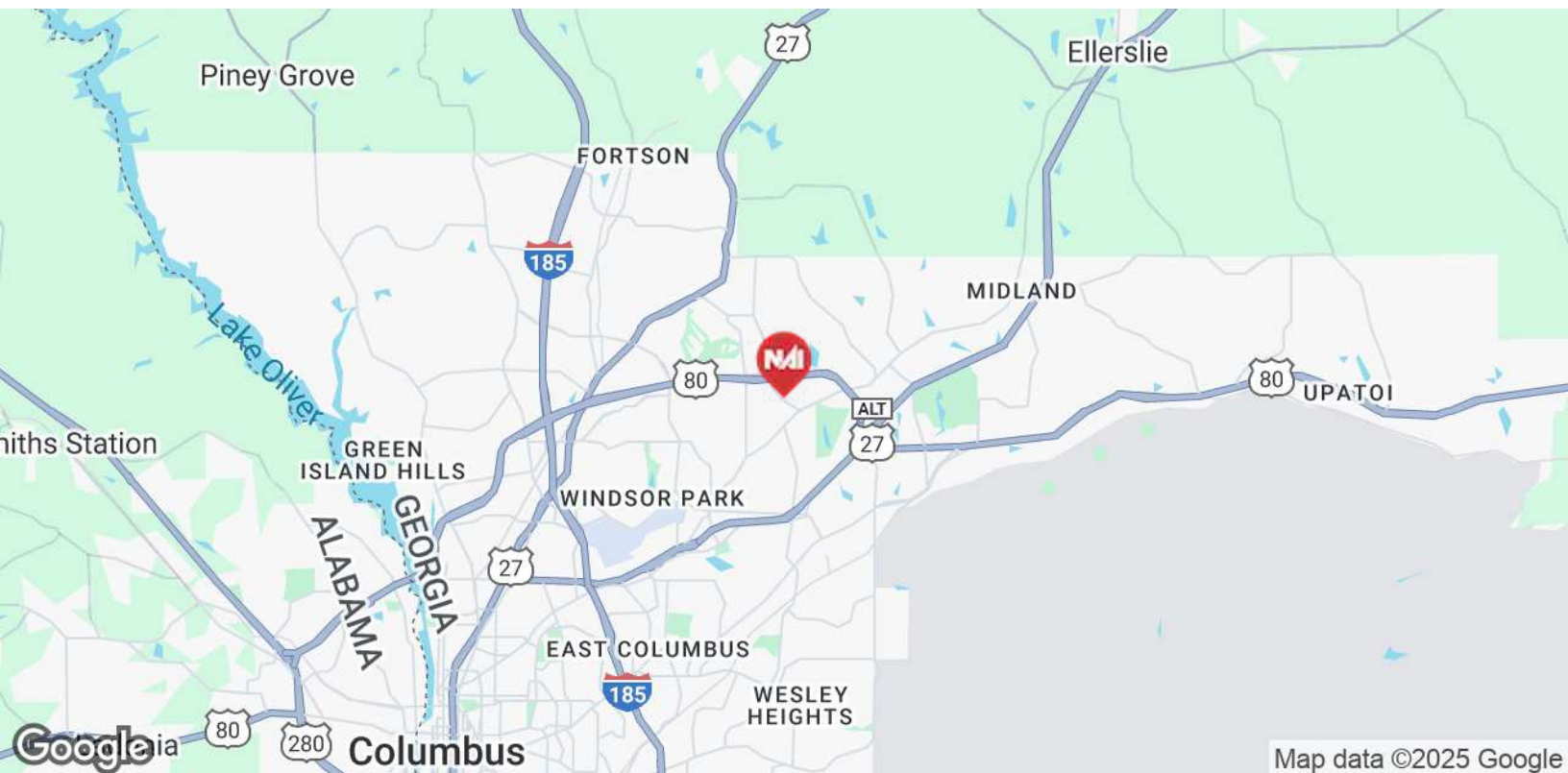
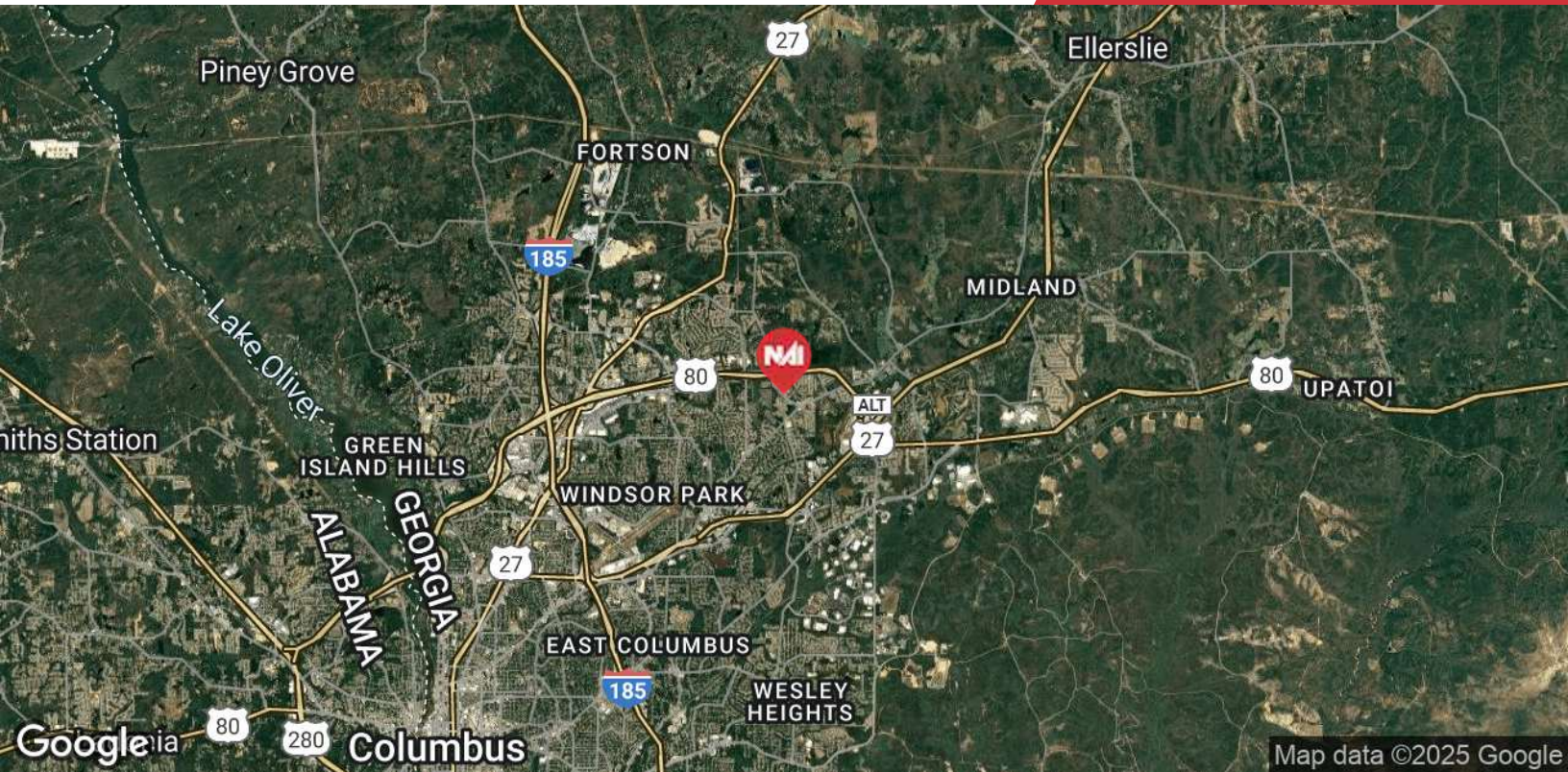
Lease Type:	NNN	Lease Term:	Negotiable
Total Space:	+/- 1,080 - 5,400 SF	Lease Rate:	\$23.00 SF/yr

Available Spaces

Suite Size (SF) Lease Type Lease Rate Description

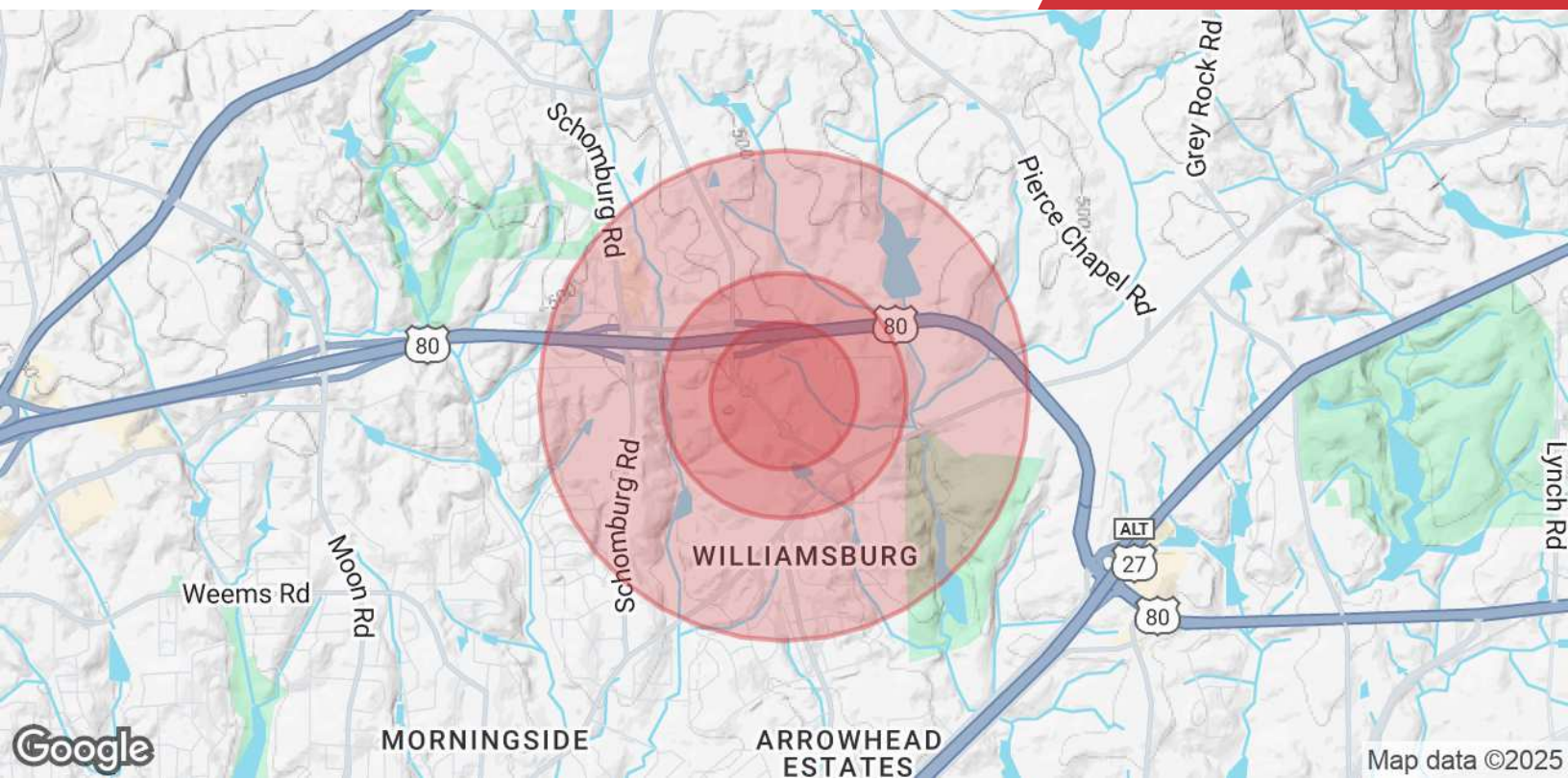
Suite B	1,080 SF	NNN	\$23.00 SF/yr	\$23/SF/YR plus CAM charges with a NNN lease. Build-to-suit option available.
Suite C	1,080 SF	NNN	\$23.00 SF/yr	\$23/SF/YR plus CAM charges with a NNN lease. Build-to-suit option available.
Suite D	1,080 SF	NNN	\$23.00 SF/yr	\$23/SF/YR plus CAM charges with a NNN lease. Build-to-suit option available.
Suite E	1,080 SF	NNN	\$23.00 SF/yr	\$23/SF/YR plus CAM charges with a NNN lease. Build-to-suit option available.
Suite F	1,080 SF	NNN	\$23.00 SF/yr	\$23/SF/YR plus CAM charges with a NNN lease. Build-to-suit option available.





We obtained the information above from sources we believe to be reliable. However, we have not verified its accuracy and make no guarantee, warranty or representation about it. It is submitted subject to the possibility of errors, omissions, change of price, rental or other conditions, prior sale, lease or financing, or withdrawal without notice. We include projections, opinions, assumptions or estimates for example only, and they may not represent current or future performance of the property. You and your tax and legal advisors should conduct your own investigation of the property and transaction.

Post Office Box 4529
Columbus, GA 31904
706 660 5418 tel
G2cre.com



Population

	0.3 Miles	0.5 Miles	1 Mile
Total Population	754	2,907	7,096
Average Age	37	37	38
Average Age (Male)	36	36	36
Average Age (Female)	37	38	39

Households & Income

	0.3 Miles	0.5 Miles	1 Mile
Total Households	279	1,127	2,821
# of Persons per HH	2.7	2.6	2.5
Average HH Income	\$156,498	\$138,961	\$117,574
Average House Value	\$440,164	\$377,567	\$323,988

Demographics data derived from AlphaMap