



**FOR LEASE, BUILD TO  
SUIT OR GROUND LEASE**

Asking Price:

**\$28.00 PSF**

**Contact us:**

**Alan W. Cole, CCIM**

Principal & Executive VP  
+1 479 644 5849  
alan.cole@ar.colliers.com

**Mason Wood**

Brokerage | Arkansas  
+1 479 409 0409  
mason.wood@ar.colliers.com



3503 S 55th Street, Suite 200  
Rogers, AR 72758  
P: +1 479 636 9000  
colliers.com/arkansas

# 2160 N Crossover Road

Fayetteville, Arkansas

## Property Availability

- +/- 1.90 acres for sale, build to suit or ground lease
- Dense, hard-to-penetrate trade area of Fayetteville
- Adjacent to future Domino's Pizza development
- Daily traffic count of 30,000 vehicles per day

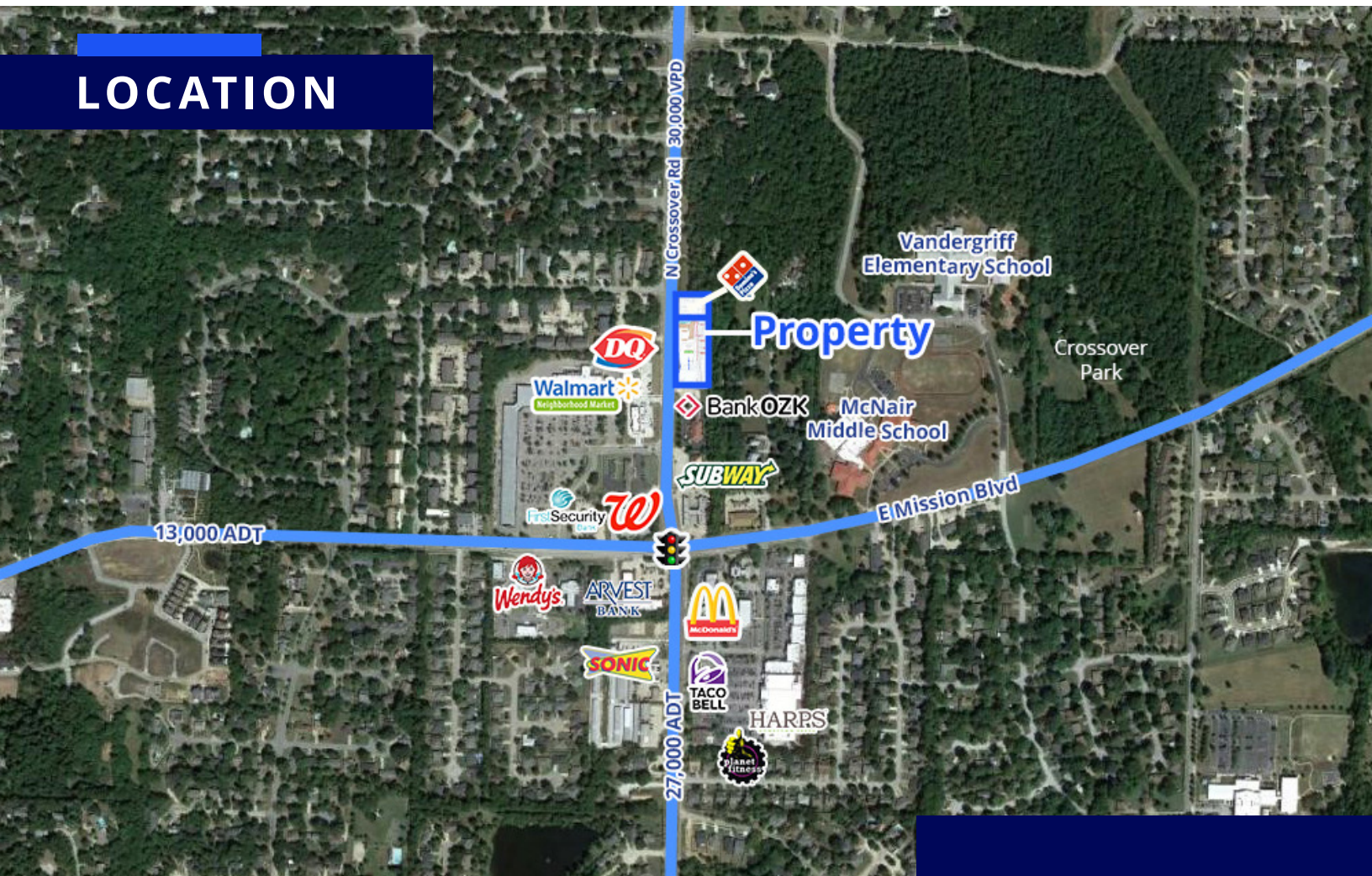
Commercial land for sale, ground lease or build to suit near the N Crossover Road and E Mission Blvd intersection in Fayetteville, Arkansas. Great opportunity for retail development in a dense area surrounded by other major retailers. Location is a main destination providing convenience and service to the suburbs of Fayetteville. Land totals approximately 1.90 acres and currently has two curb cuts / access points.

Copyright © 2021 Colliers International.

Information herein has been obtained from sources deemed reliable, however its accuracy cannot be guaranteed. The user is required to conduct their own due diligence and verification.



# LOCATION



## Demographics

	1 Mile	3 Mile
Population (2024)	7,822	44,333
Projected Population (2029)	8,072	45,838
Average HH Income (2024)	\$129,351	\$98,356
Proj. Average HH Income (2029)	\$148,068	\$111,670
Households (2024)	2,992	20,009



## Contact us:

### Alan W. Cole, CCIM

Principal & Executive VP  
+1 479 644 5849  
alan.cole@ar.colliers.com

### Mason Wood

Brokerage | Arkansas  
+1 479 409 0409  
mason.wood@ar.colliers.com



Accelerating success.

3503 S 55th Street, Suite 200  
Rogers, AR 72758  
P: +1 479 636 9000  
colliers.com/arkansas

Copyright © 2021 Colliers International.

Information herein has been obtained from sources deemed reliable, however its accuracy cannot be guaranteed. The user is required to conduct their own due diligence and verification.