

SAN FRANCISCO, CA 94103

SOMA Centre 236 8th

FOR LEASE

+/- 1,950 - 16,650 SF

MARIO PREVITALI

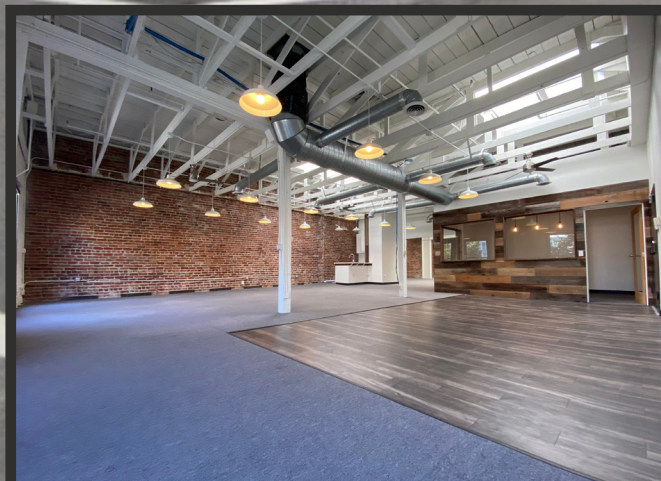
Senior Vice President
Email: mario@calcosf.com
Cell: 415.755.8905
DRE #01902075

CHARLES WILLIAMS

Associate
Email: charles@calcosf.com
Cell: 916.757.3154
DRE #02244143

BENNETT FALONI

Associate
bennett@calcosf.com
724.678.2851
DRE #02250514



We're Here to Help – Reach Out Today!

425 2nd St. Suite 450, San Francisco, CA 94107 | info@calcosf.com | (415) 970-0000 | calcosf.com

BUILDING HIGHLIGHTS

| 236 8th St.

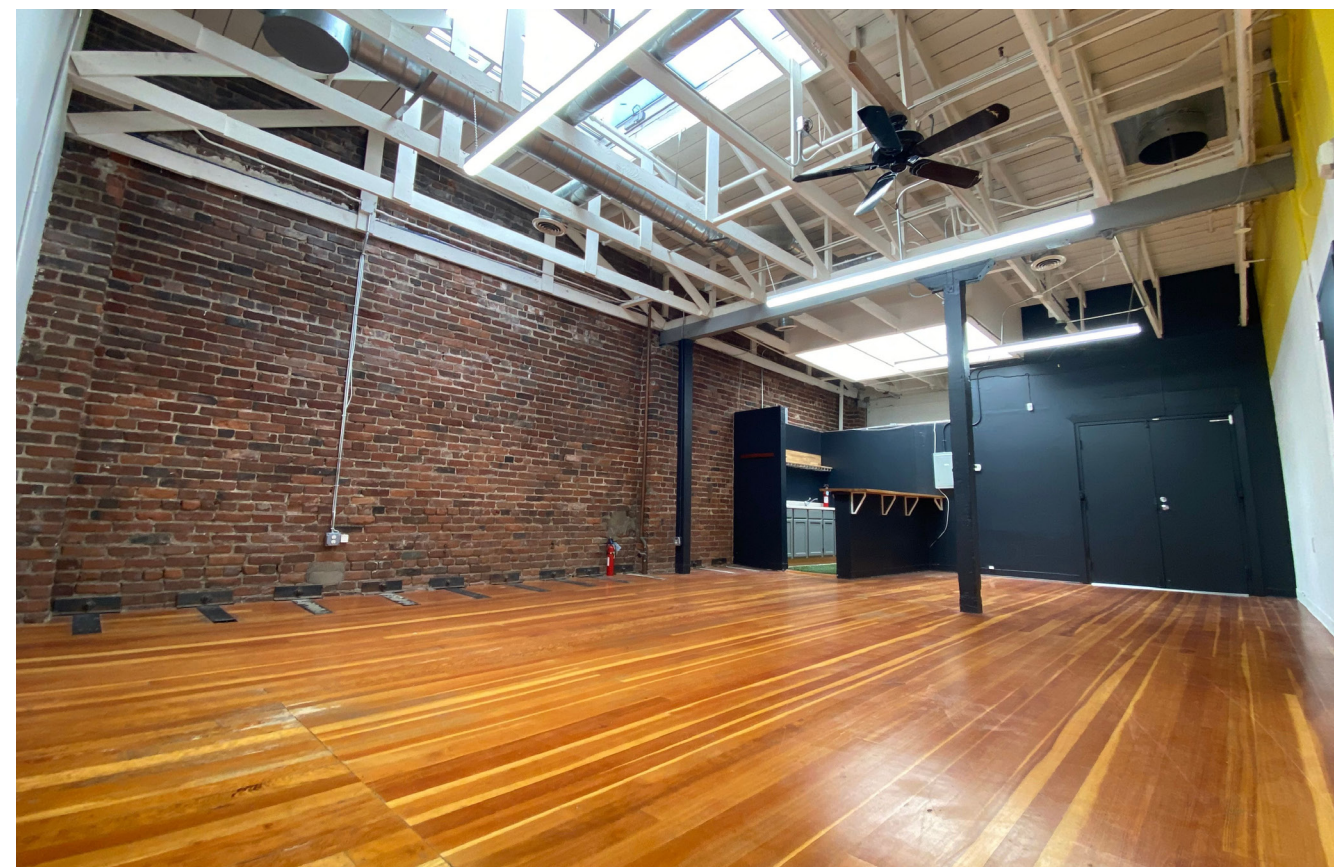
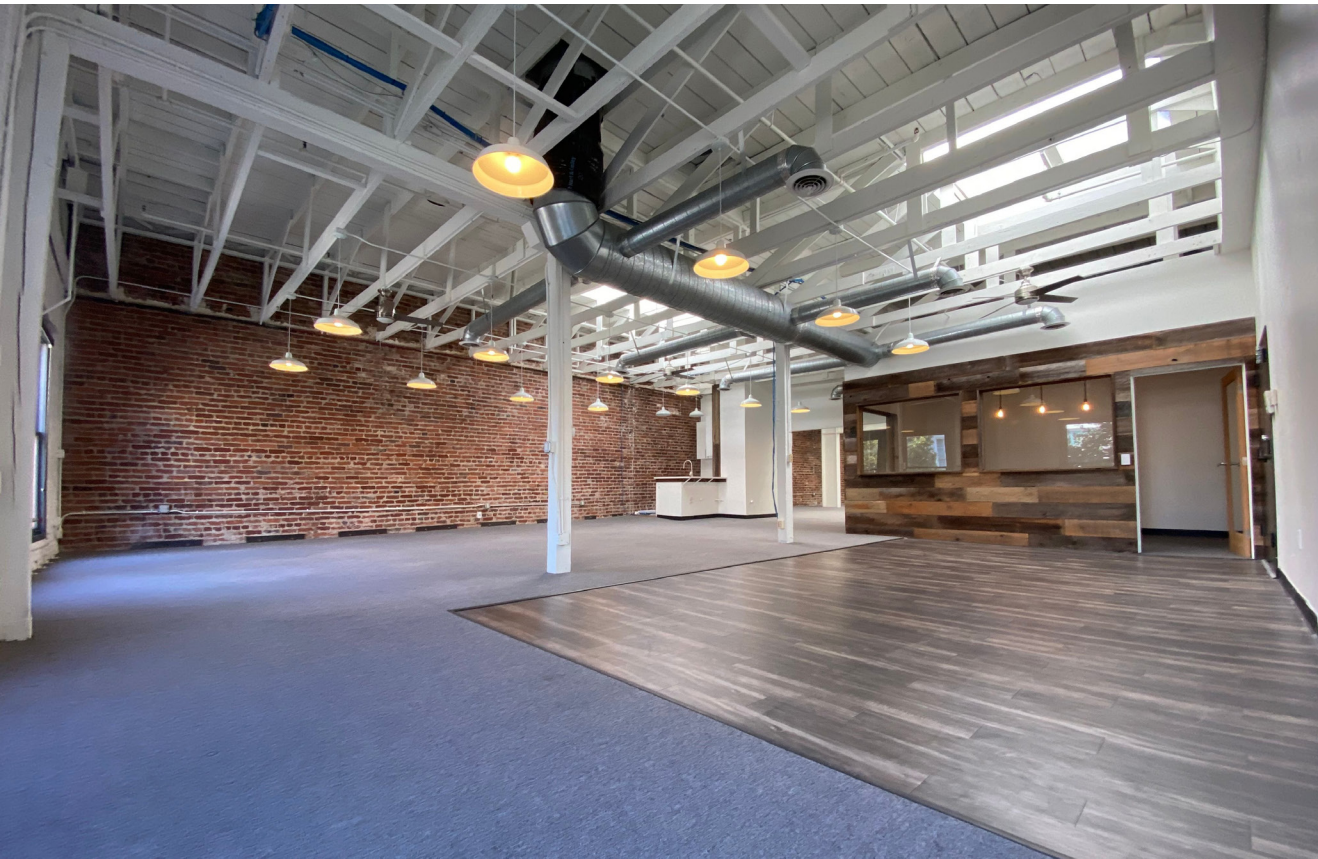
- Brick & Timber Aesthetics
- Heavy Power: 600 AMPs Service
- High Ceilings Throughout
- Full HVAC Throughout
- 100% Sprinklered Throughout
- Exterior Signage Available
- Boutique SOMA Building



GALLERY

| 236 8th St.

 **CALCO**
COMMERCIAL, INC.



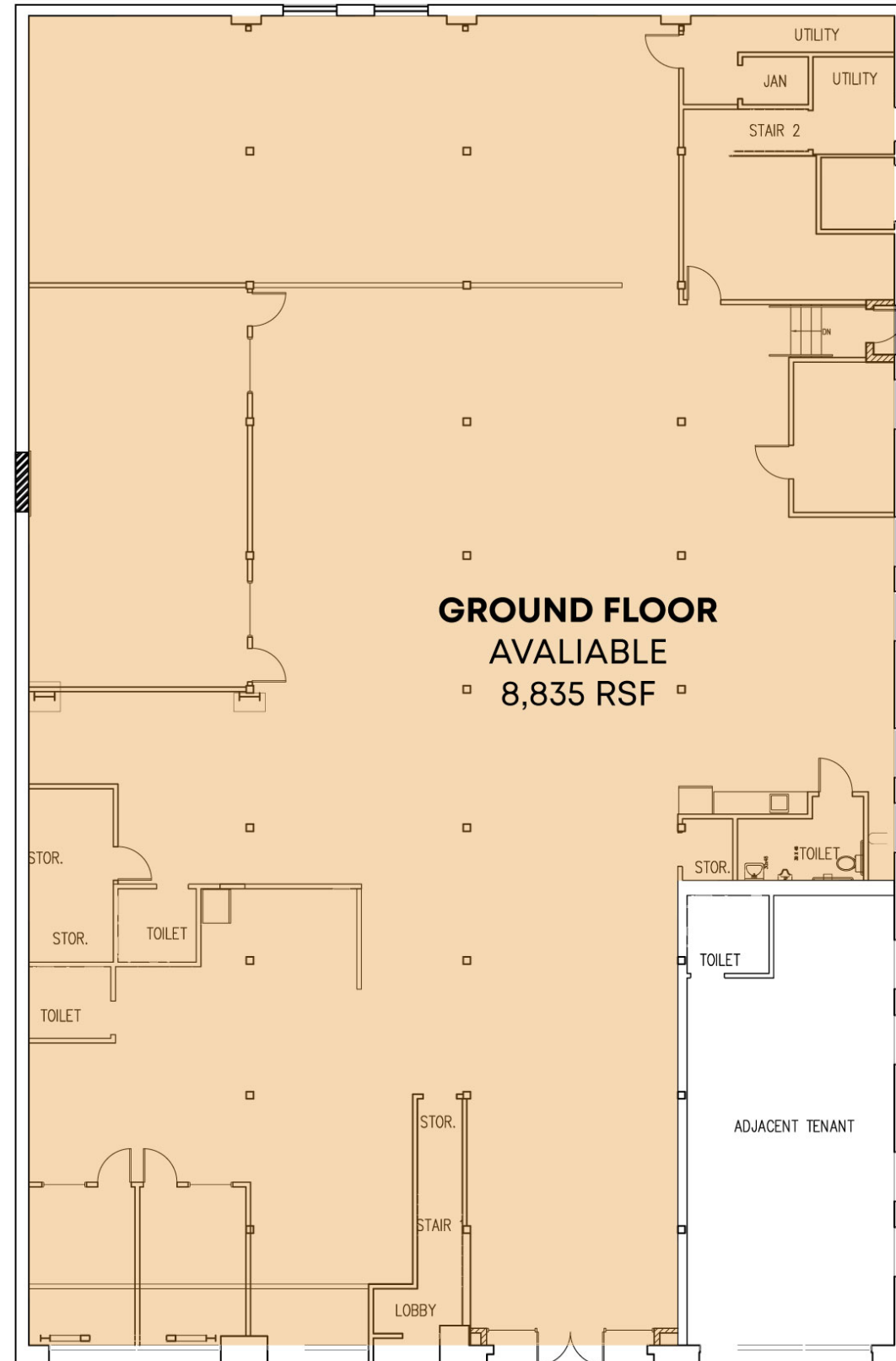
SPACE HIGHLIGHTS

| 236 8th St.

GROUND FLOOR FLEX

+/- 8,835 RSF

- Available Immediately
- 11' Ceiling Height
- Drive-In Access
- Two (2) Kitchenettes
- Three (3) Bathrooms
- Three (3) Office / Meeting Rooms
- One (1) Large Conference Room



SPACE HIGHLIGHTS

| 236 8th St.

SUITE A:

3,291 RSF

- Available Immediately
- One (1) Conference Room
- Kitchenette
- Room for ~20 - 32 workstations

SUITE B:

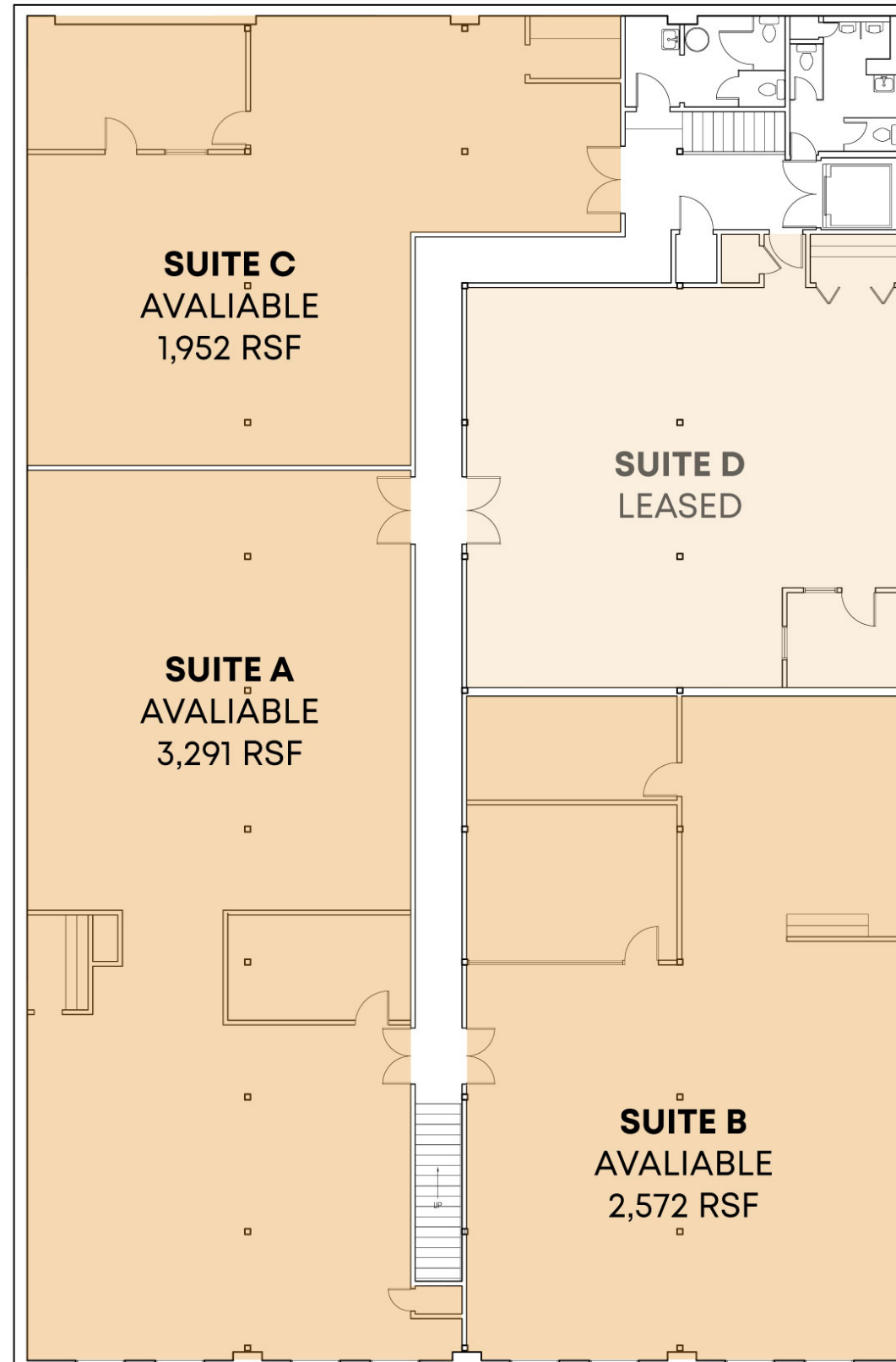
2,572 RS

- Available Immediately
- Two (2) Private Offices / Meeting Rooms
- Kitchenette
- Room for ~ 10 - 25 workstations

SUITE C:

1,952 RSF

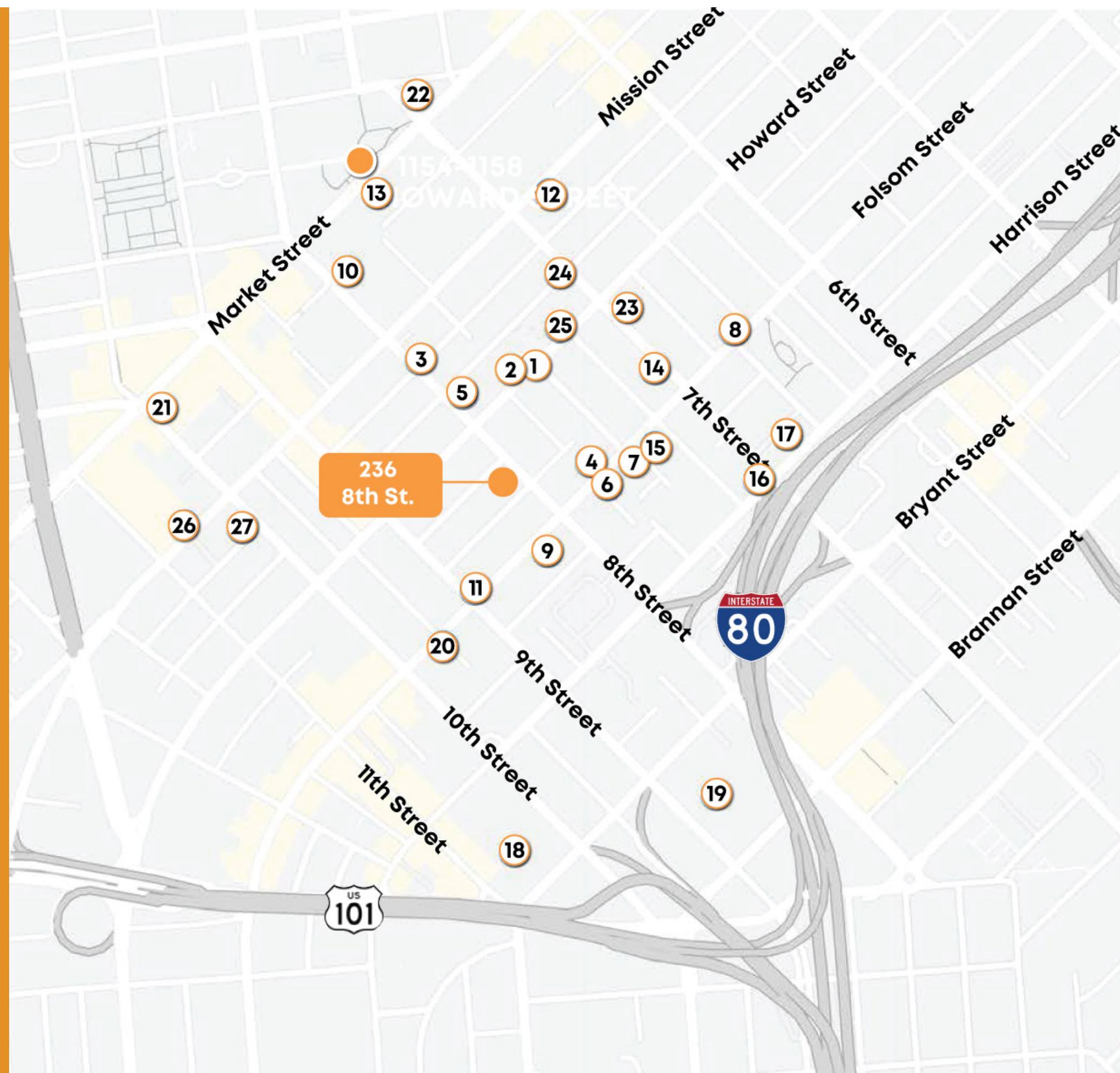
- Available Immediately
- One (1) Conference Room
- Three (3) Phone Booths
- Kitchenette
- Room for ~8 - 15 workstations



NEARBY AMENITIES

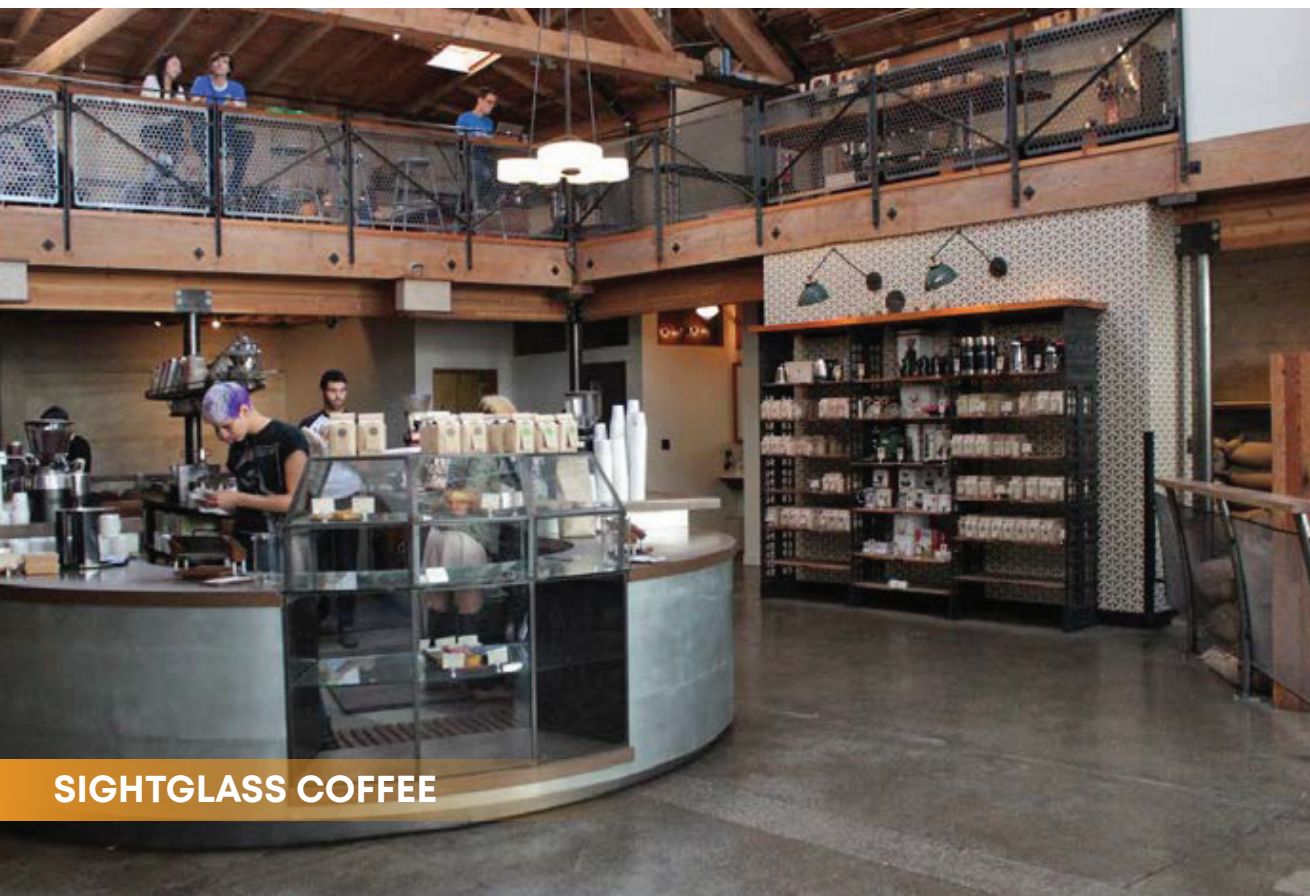
| 236 8th St.

- 1 Cellarmaker Brewing Co.
- 2 Rize Up Bakery
- 3 Sizzling Pot King
- 4 DECANTsf
- 5 Harvest Urban Market
- 6 Basil Thai Restaurant & Bar
- 7 Raven Bar
- 8 Deli Board
- 9 Driftwood
- 10 Whole Foods Market
- 11 Azúcar Lounge
- 12 Square Pie Guys
- 13 La Cuisine Cafe
- 14 Sightglass Coffee
- 15 Boba Guys
- 16 Rocco's Cafe
- 17 Rumors
- 18 Plaid Headquarters
- 19 Costco Wholesale
- 20 Trader Joe's
- 21 Powerhouse
- 22 Twitter HQ
- 23 Charmaine's Rooftop Bar
- 24 Champagne Society
- 25 Caffè Moda
- 26 Ritual Hot Yoga
- 27 WeWork
- 28 Urbana SOMA



NEARBY AMENITIES

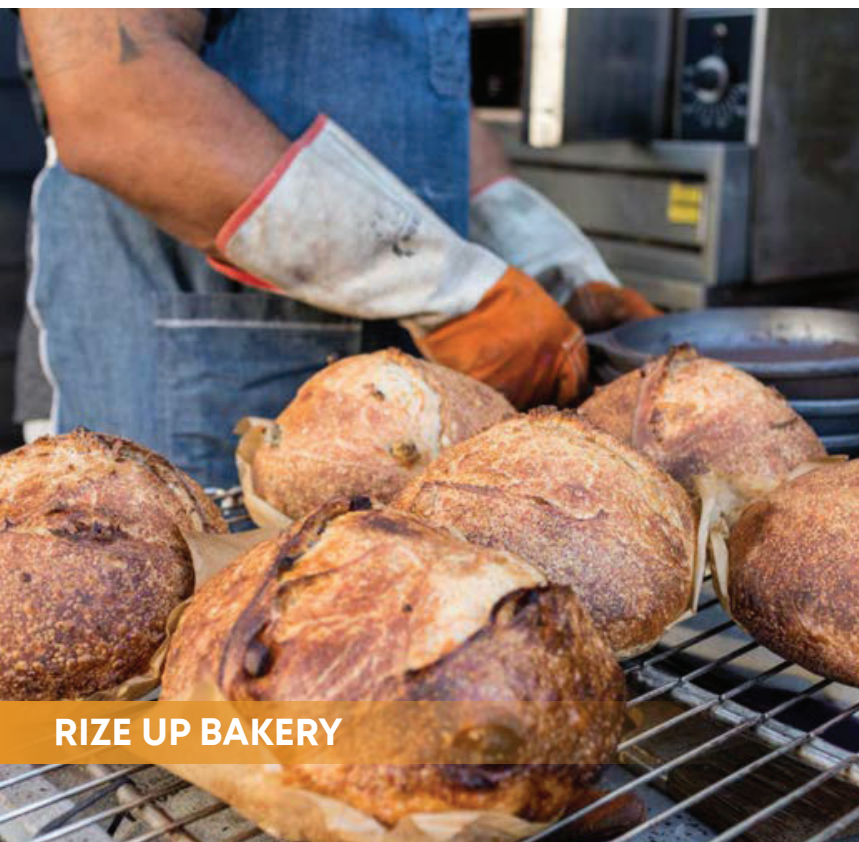
| 236 8th St.



SIGHTGLASS COFFEE



CELLARMAKER BREWING CO.



RIZE UP BAKERY



DECANTSF



LA CUISINE CAFE



MARIO PREVITALI

Senior Vice President
Email: mario@calcosf.com
Cell: 415.755.8905
DRE #01902075

CHARLES WILLIAMS

Associate
Email: charles@calcosf.com
Cell: 916.757.3154
DRE #02244143

PIONEERING REAL ESTATE SOLUTIONS WITH PROVEN EXPERTISE

BENNETT FALONI

Associate
bennett@calcosf.com
724.678.2851
DRE #02250514

Calco Commercial, founded in 2011 by Scott Mason, brings over 35 years of experience and 2,500+ transactions, totaling over \$2.2 billion in sales and leases. Specializing in leasing and sales of commercial real estate in the San Francisco Bay Area and nationwide, we consistently rank as a top-producing firm. With deep knowledge of the Bay Area market, our team offers clients over three decades of expertise and exceptional customer service, providing the tools and guidance to navigate the ever-changing commercial real estate landscape.