



***11556 Rainwater Drive is 2.09 acres pad ready restaurant site located at a full movement intersection.***

Walking distance to Alpha Loop Trail system  
2 minute to 400  
3 minute to Avalon  
5 minute to Down Town Alpharetta

Northwinds Office Park  
1,050,000 sqft Office Space

**2.09 ACRES FOR SALE**

Alpha Loop Trail System

full movement intersection

Alpha Loop Trail System

**VILLAGE TAVERN**  
Scratch Kitchen - Craft Bar

Northwinds Parkway

Northwinds Office Park

The Lights at Northwinds  
New Luxury Apartments

**RUTH'S CHRIS STEAK HOUSE**

Delta Community CREDIT UNION

**COOK OUT**

bp

**SYNOVUS**

Restaurant under construction

RISE ROLL

Fairfield BY MARRIOTT

Haynes Bridge Road

The Gathering  
New 25 Acre Mixed-Use  
UNDER CONSTRUCTION

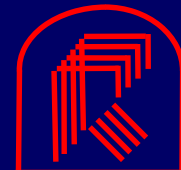
Westside Parkway

Georgia 400 Center  
420,000 sqft of Office Space

Edison Lake  
New Mixed-Use  
UNDER CONSTRUCTION  
255 Apartments  
now leasing

GA 400  
Exit 9  
Haynes Bridge Road

Colonial Pipeline  
Corporate Headquarters  
Office Building



**Roberts Properties, Inc.**  
770-394-6000 [www.robertsproperties.com](http://www.robertsproperties.com)

**2.09 AC Restaurant Pad  
At Full Movement Intersection  
FOR SALE**

**11556 Rainwater Drive  
Alpharetta, Georgia**

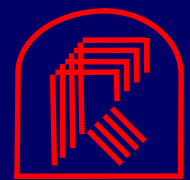
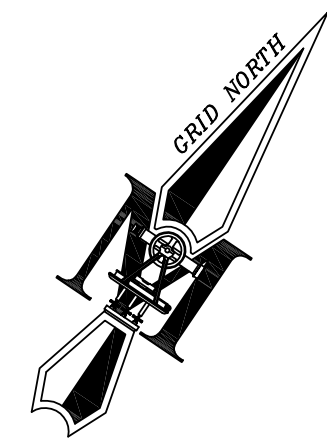
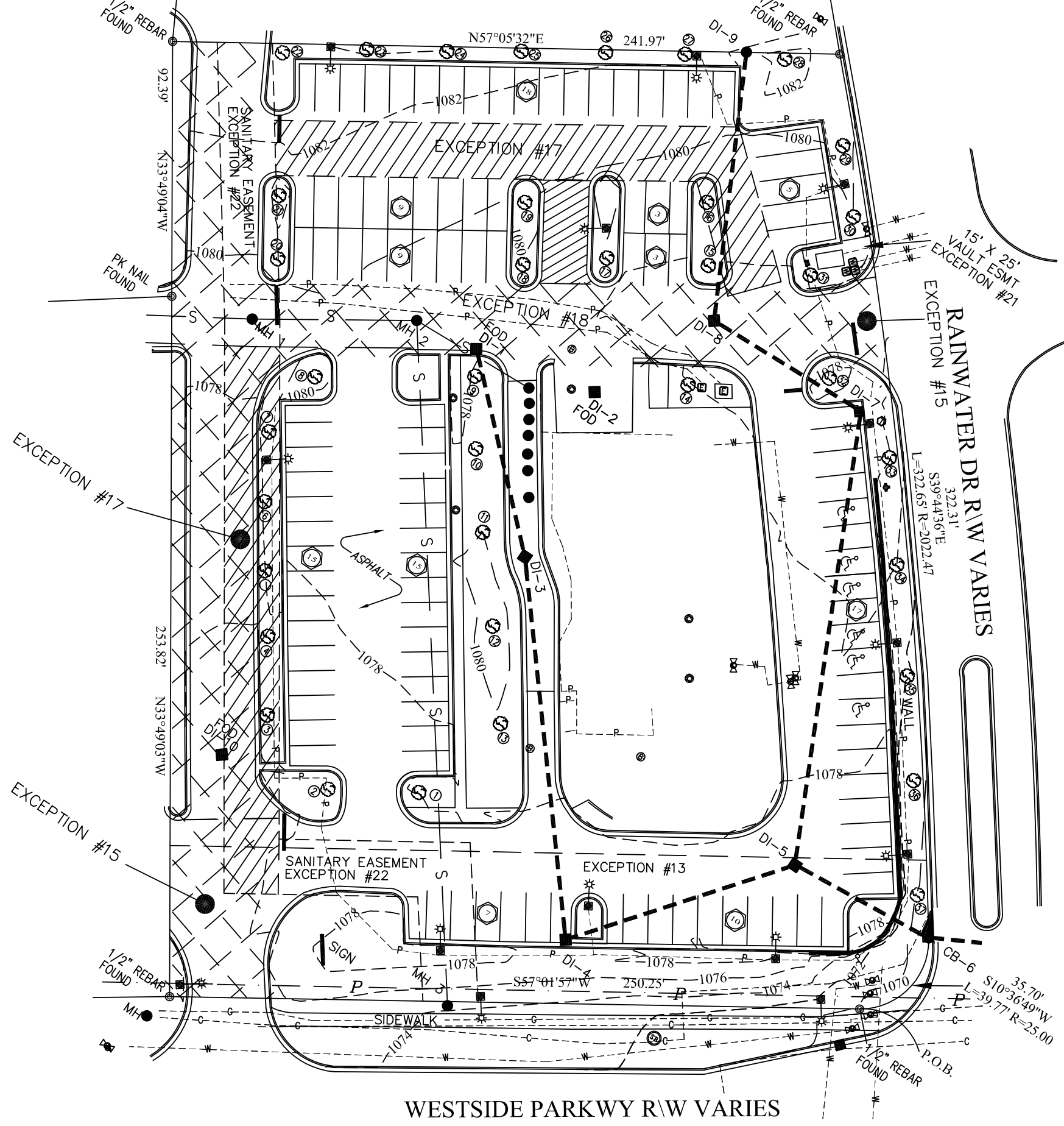
ready restaurant site located at a full movement intersection.

Walking distance to Alpha Loop Trail system

2 minute to 400

3 minute to Avalon

5 minute to Down Town Alpharetta



**Roberts Properties, Inc.**  
770-394-6000 [www.robertsproperties.com](http://www.robertsproperties.com)

**2.09 AC Restaurant Pad**  
**At Full Movement Intersection**  
**FOR SALE**

**11556 Rainwater Drive**  
**Alpharetta, Georgia**