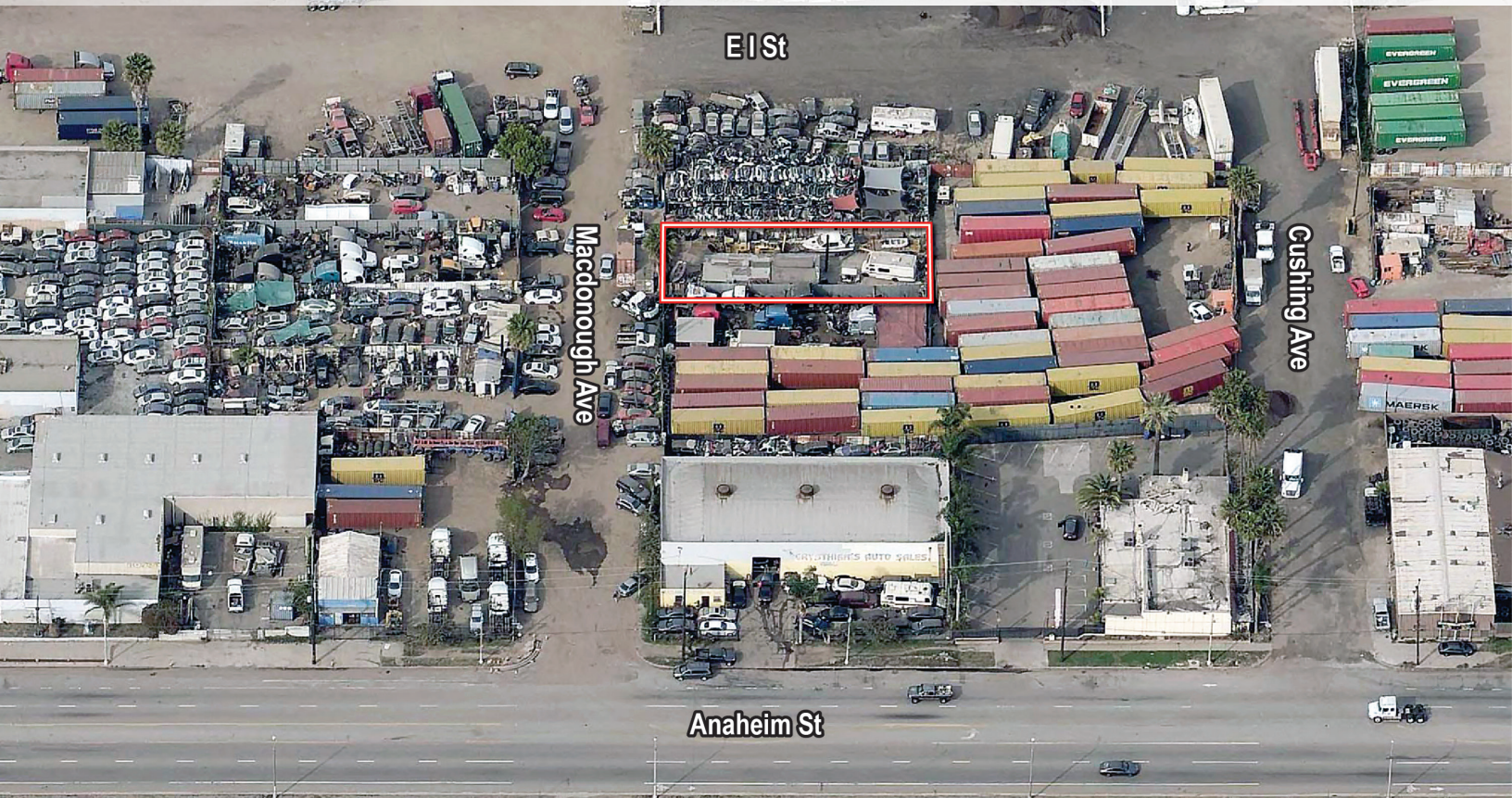


4,793 SF Industrial Land

820 Macdonough Ave, Wilmington, CA 90744



# FOR LEASE OR SALE

### Property Highlights

- Fully Fenced and Paved
- Shed Included
- Immediate Port Access
- Adjacent to Anaheim Street
- Excellent Port of Los Angeles Location
- 110 and 710 Freeway Access
- Minutes from Pacific Coast Highway and Anaheim Street
- Move-In Ready

### Property Features

Land Area:.....	4,793
Fenced:.....	Yes
Gated:.....	Yes
Paved:.....	Yes
Water:.....	Yes
Electricity:.....	Yes
Zoning:.....	LAM2

### Lease and Sale Terms

- Asking Rent: \$4,000 (\$0.83 PSF) Per Month, Gross
- Sale Price: \$750,000 (\$156.48 PSF)



REAL ESTATE SERVICES

www.voitco.com

**DAVID FULTS**  
 Senior Vice President  
 Lic. #0242123  
 323.791.0038  
 dfults@voitco.com

**BRIAN MCLOUGHLIN**  
 Senior Vice President  
 Lic. #0268410  
 323.633.1074  
 dfults@voitco.com

1025 W. 190th St., Suite 350, Los Angeles, CA 90248 | 424.329.7500 • 424.233.0736 Fax • Lic #01991785



# For Lease or Sale 4,793 SF Industrial Land

820 Macdonough Ave, Wilmington, CA 90744



## Voit

REAL ESTATE SERVICES

[www.voitco.com](http://www.voitco.com)

**DAVID FULTS**  
Senior Vice President  
Lic. #0242123  
332.791.0038  
[dfults@voitco.com](mailto:dfults@voitco.com)

**BRIAN MCLOUGHLIN**  
Senior Vice President  
Lic. #0268410  
332.633.1074  
[bmcloughlin@voitco.com](mailto:bmcloughlin@voitco.com)

1025 W. 190th St., Suite 350, Los Angeles, CA 90248 | 424.329.7500 • 424.233.0736 Fax • Lic #01991785

Licensed as Real Estate Salespersons by the CA Bur of Real Estate. The information contained herein has been obtained from sources we deem reliable. While we have no reason to doubt its accuracy, we do not guarantee it. ©2017 Voit Real Estate Services, Inc. All Rights Reserved.