

COMMERCIAL OFFICE UNITS | FOR LEASE

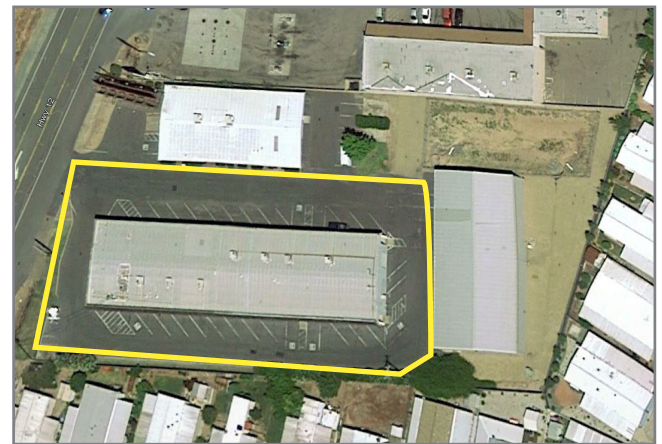
18540 NORTH HWY 88, LOCKEFORD, CA



UNIT SIZES: 264± SF - 1,128± SF
AVAILABLE SF: 5,788± SF (Building II)
ZONING : C-C (Community Commercial)
COMMENTS:

- Eight (8) units available for lease
- Wood frame and stucco construction
- Each unit includes glass storefront
- Units can be combined to accommodate larger tenants
- Most units include one (1) restroom
- Ideal for retail or office tenants
- High visibility location
- Illuminated pole sign

LEASE RATE: \$0.85 per square foot, NNN



Jim Martin, SIOR

BRE #01214270
jmartin@lee-associates.com
D 209.983.4088
C 925.352.6948

Jake Cardinale

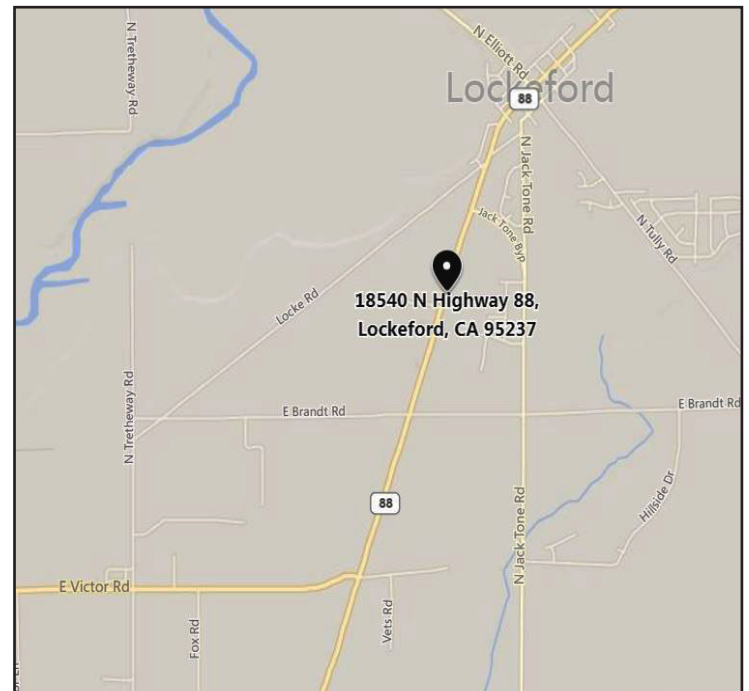
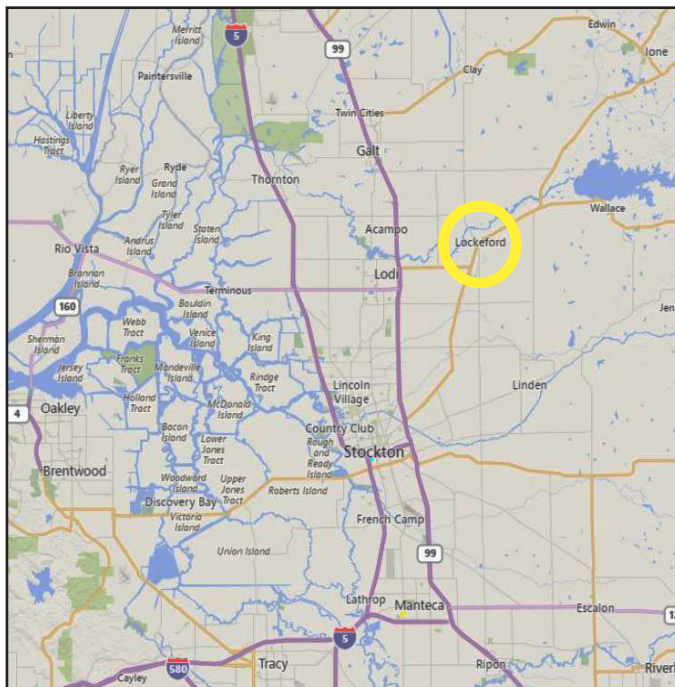
BRE #02190768
jcardinale@lee-associates.com
D 209.983.6831
C 209.480.5108

All information furnished regarding property for sale, rental or financing is from sources deemed reliable, but no warranty or representation is made to the accuracy thereof and same is submitted to errors, omissions, change of price, rental or other conditions prior to sale, lease or financing or withdrawal without notice. No liability of any kind is to be imposed on the broker herein.

COMMERCIAL OFFICE UNITS | FOR LEASE

18540 NORTH HWY 88, LOCKEFORD, CA

Suite #	Tenants	Square Feet
A	AVAILABLE	1,128±
B	AVAILABLE	940±
E	AVAILABLE	1,128±
F- Front	AVAILABLE	864±
F- Back	AVAILABLE	264±
G- Front	AVAILABLE	736±
G- Back	AVAILABLE	392±
H- Side	AVAILABLE	336±



Jim Martin, SIOR
BRE #01214270
jmartin@lee-associates.com
D 209.983.4088
C 925.352.6948

Jake Cardinale
BRE #02190768
jcardinale@lee-associates.com
D 209.983.6831
C 209.480.5108

All information furnished regarding property for sale, rental or financing is from sources deemed reliable, but no warranty or representation is made to the accuracy thereof and same is submitted to errors, omissions, change of price, rental or other conditions prior to sale, lease or financing or withdrawal without notice. No liability of any kind is to be imposed on the broker herein.