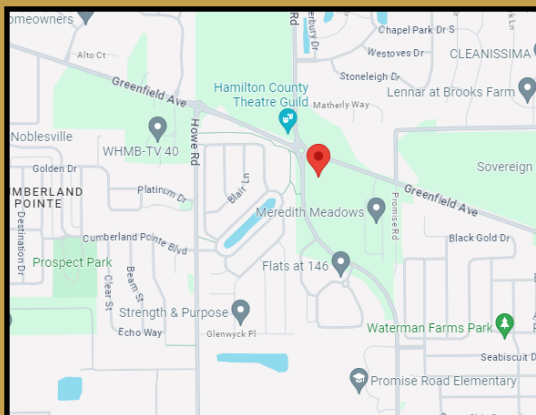


Retail Space Available

Union Chapel Office

15481 Union Chapel Road, Suite 130, Noblesville, IN

+/- 1,844 SF



For more information or to schedule a tour, please contact:

Tyler Underwood

Agent/Broker

317.922.1224 Office

tyler@ru2.com

AVAILABLE FOR LEASE CONTACT FOR PRICING

±1,844 SQ. FT.

Property Highlights:

- ◆ Join high growth area
- ◆ Part of the \$13 Million Union Chapel Crossing Complex completed in 2018
- ◆ Near SR 37 and Hamilton Town Center
- ◆ On-site Management
- ◆ High Visibility off Greenfield Ave & Union Chapel Road



15481 Union Chapel
Road, Suite 100

Office 317-578-9400

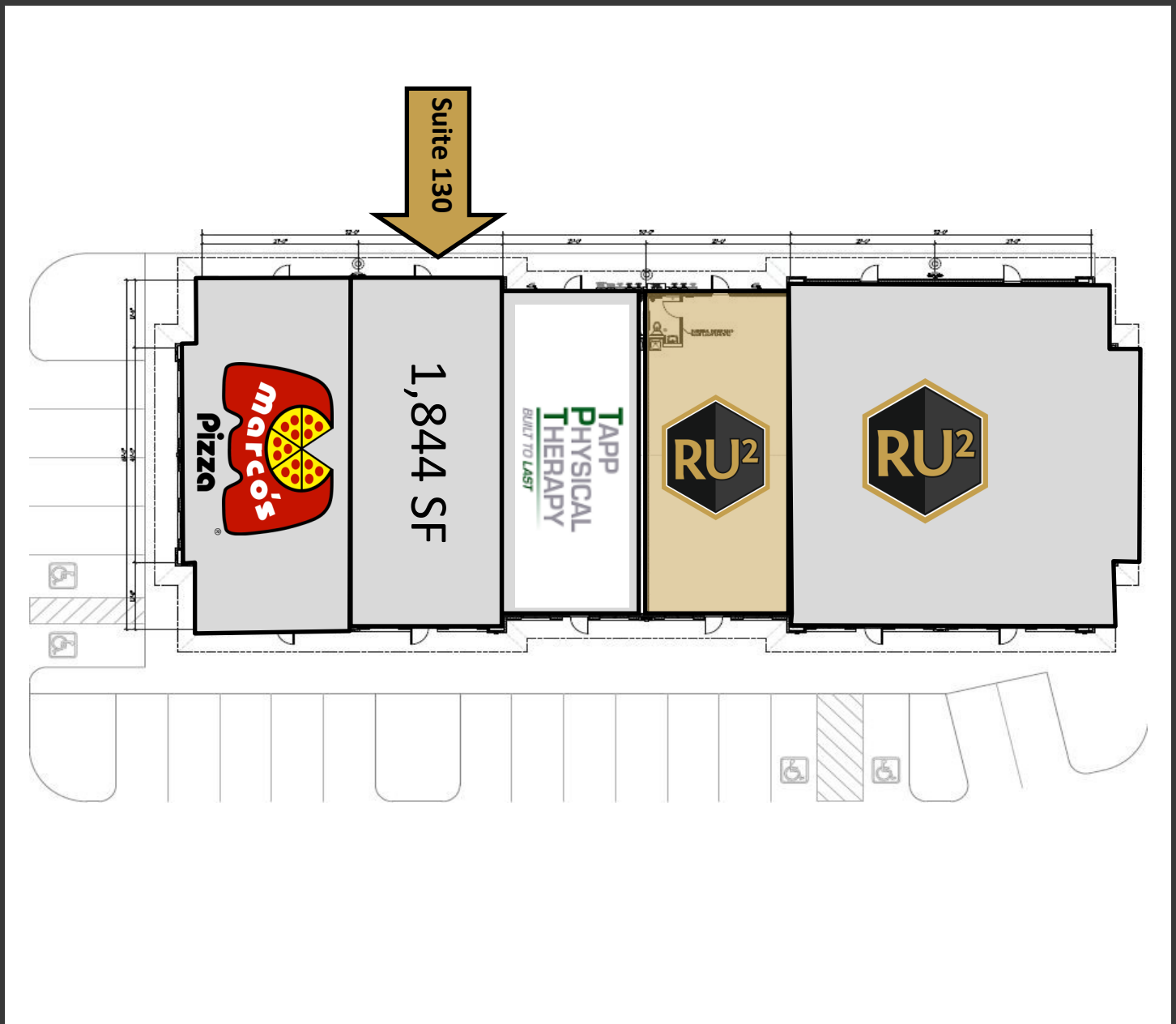
Fax 317-578-9402

www.ru2.com

Building Layout

15481 Union Chapel Road, Suite 130, Noblesville, IN

+/- 1,844 SQ. FT.



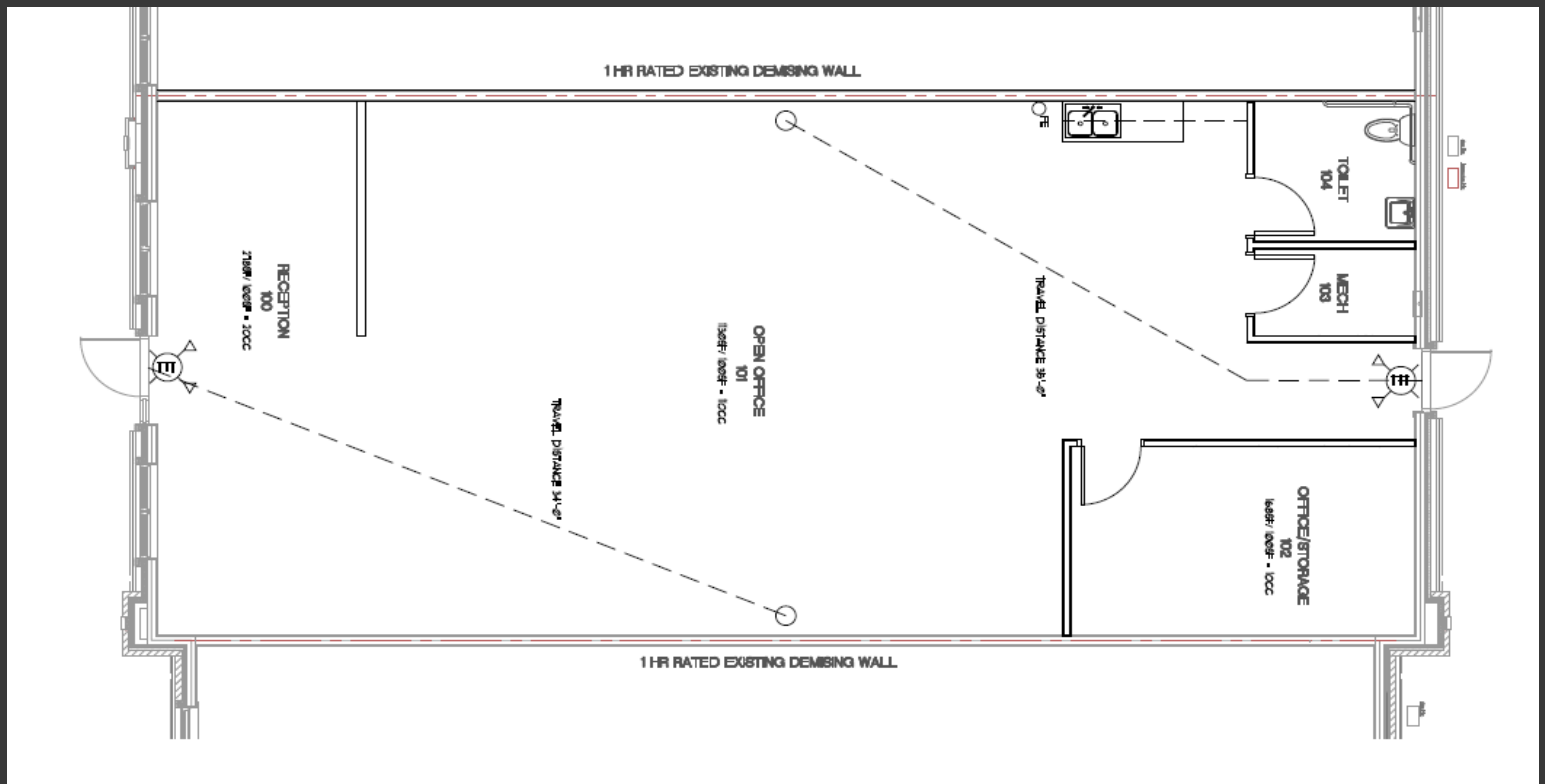
15481 Union Chapel
Road, Suite 100

Office 317-578-9400
Fax 317-578-9402
www.ru2.com

Current Floor Plan

15481 Union Chapel Road, Suite 130, Noblesville, IN

+/- 1,844 SQ. FT.



15481 Union Chapel
Road, Suite 100

Office 317-578-9400
Fax 317-578-9402
www.ru2.com

Current Floor Plan

15481 Union Chapel Road, Suite 130, Noblesville, IN

+/- 1,844 SQ. FT.



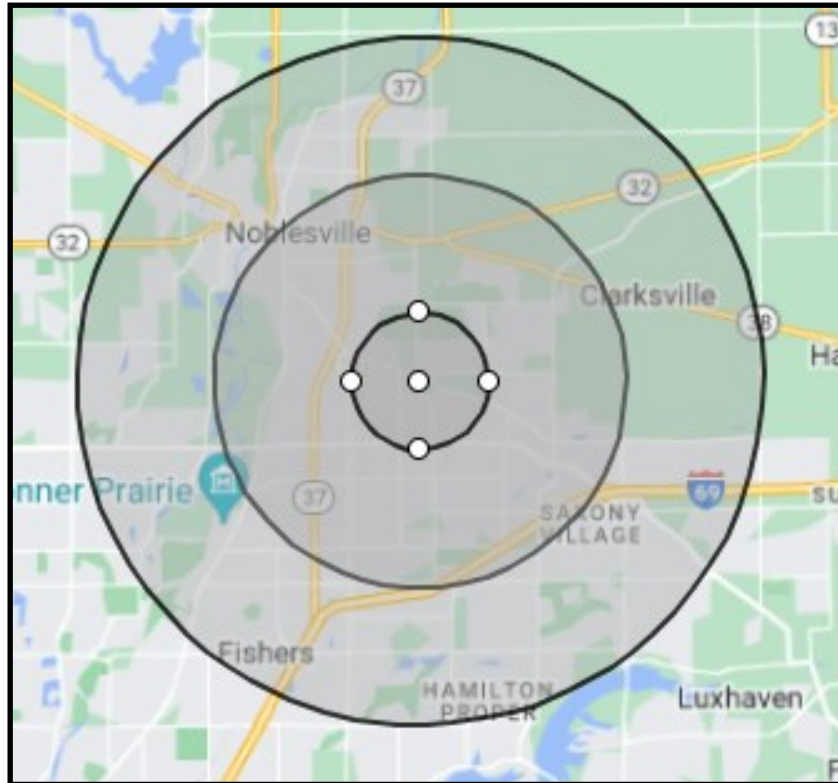
15481 Union Chapel
Road, Suite 100

Office 317-578-9400
Fax 317-578-9402
www.ru2.com

Demographics

15481 Union Chapel Road, Suite 130, Noblesville, IN

+/- 1,844 SQ. FT.



	1 Mile	3 Mile	5 Mile
--	--------	--------	--------

Population	8,399	56,697	132,579
Median Household Income	\$115,557	\$109,119	\$124,116
Households	3,146	19,780	45,460

AADT - 10,783 Daily Drivers



15481 Union Chapel
Road, Suite 100

Office 317-578-9400
Fax 317-578-9402
www.ru2.com