



PROPERTY DESCRIPTION

Great value - City of Newark office space for lease! Street level retail and/or office space located just off South Main Street in Newark, DE. The property offers convenient access to the University of Delaware; Off-street parking and signage available.

PROPERTY DETAILS

- **First Floor: Fully Leased**
- **Second Floor Walk-Up:**
- **Suite 1:** 436 RSF
 - > **Lease Rate:** \$615/month
- **Suite 6:** 484 RSF
 - > **Lease Rate:** 685/month
- **Suite 7:** 558 RSF
 - > **Lease Rate:** \$790/month

DEMOGRAPHICS	1 MILE	3 MILES	5 MILES
Total Population	12,680	58,085	122,892
Total Households	3,674	19,271	42,102
Average HH Income	\$63,959	\$74,257	\$78,799
Median Age	23.1	29.7	31.6



For More Information, Contact:

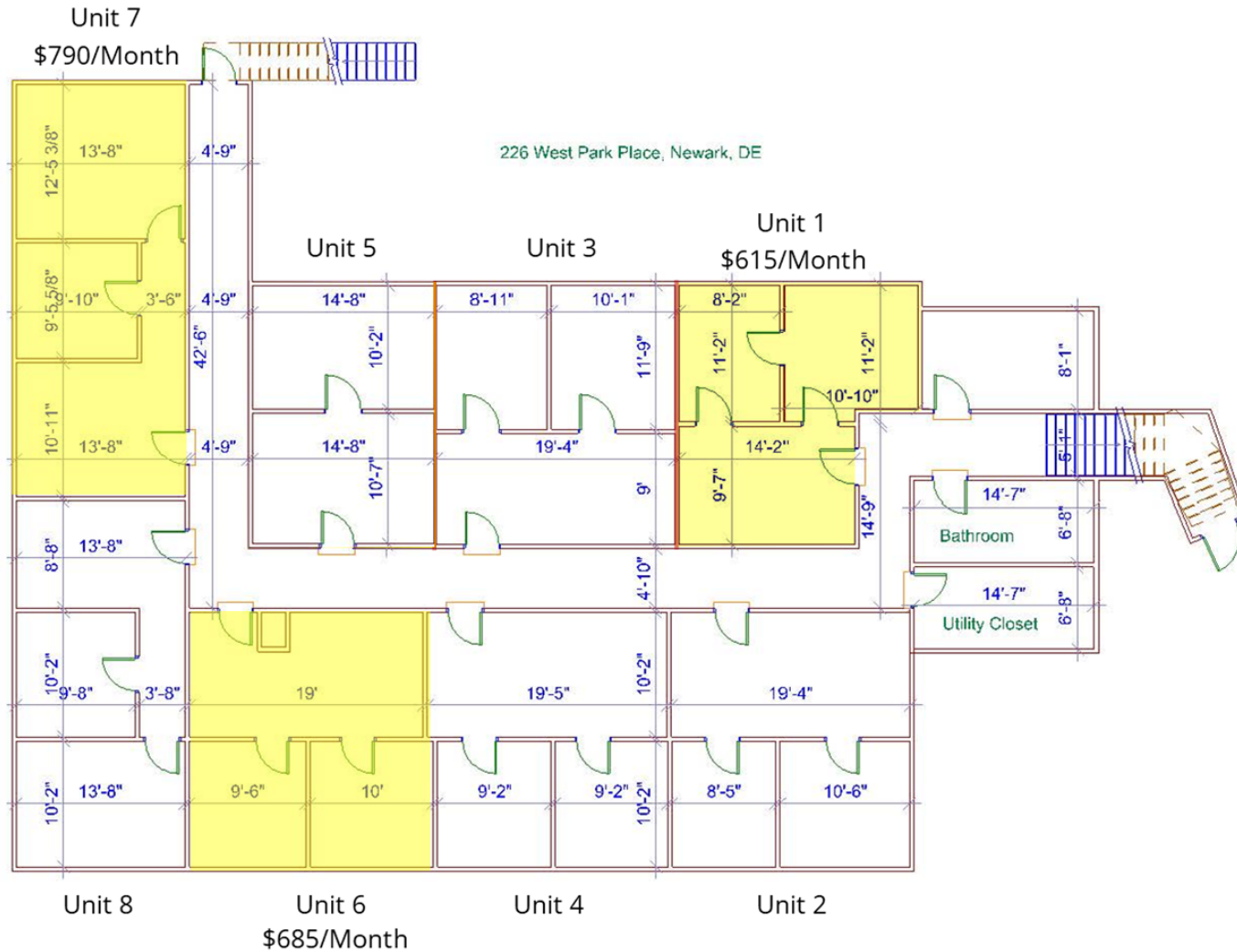
Gordon Winegar
gwinegar@dsmre.com
302.283.1800 Office
302.757.5353 Cell

Dann Gladnick
dgladnick@dsmre.com
302.540.8969 Office
302.540.8969 Cell

DSM Commercial
Real Estate Services
3304 Old Capitol Trail
Wilmington, DE 19808
dsmre.com



2nd FLOOR WALK-UP



For More Information, Contact:

Gordon Winegar
gwinegar@dsmre.com
302.283.1800 Office
302.757.5353 Cell

Dann Gladnick
dgladnick@dsmre.com
302.540.8969 Office
302.540.8969 Cell

DSM Commercial
Real Estate Services
3304 Old Capitol Trail
Wilmington, DE 19808
dsmre.com

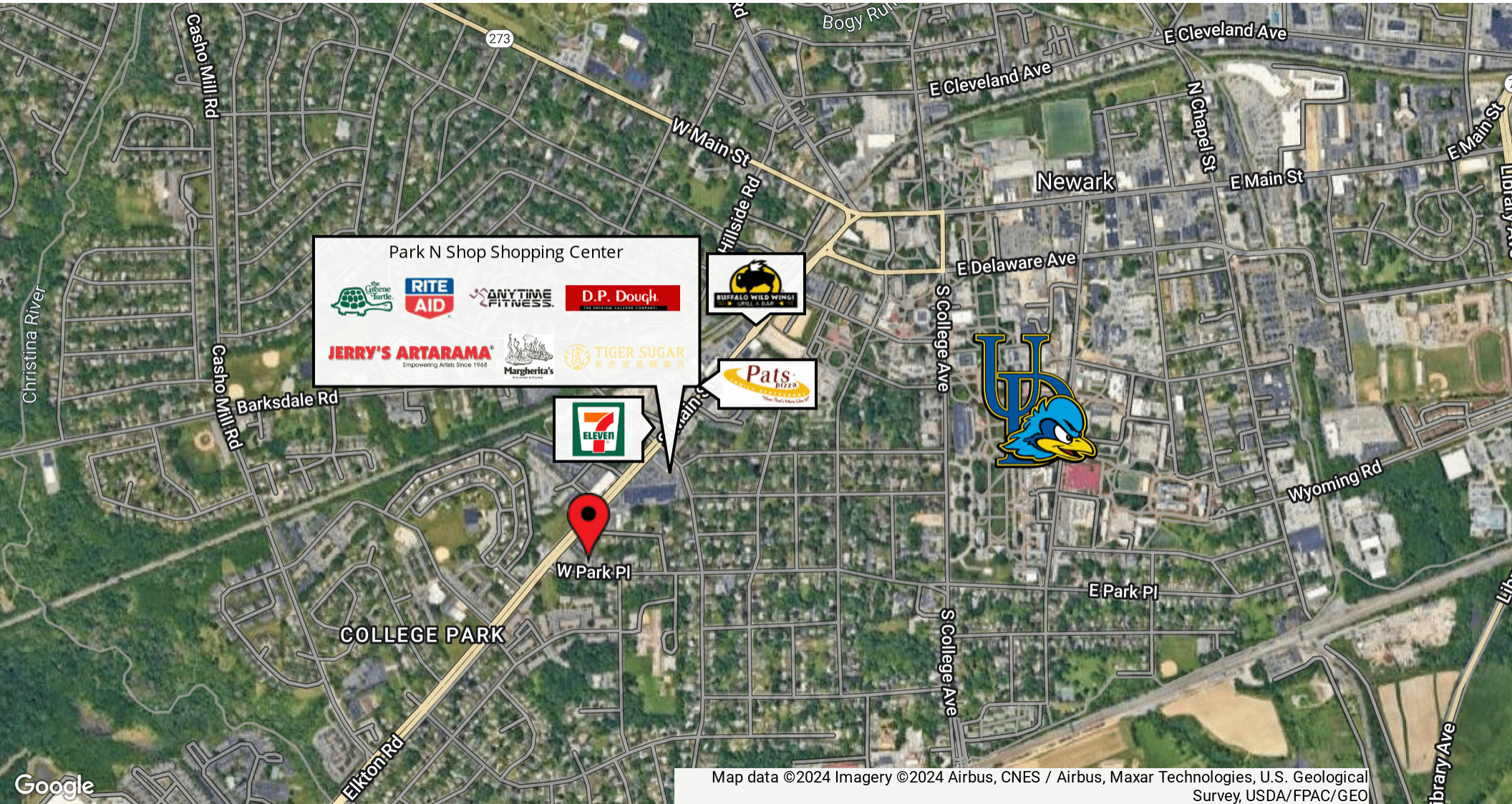


For More Information, Contact:

Gordon Winegar
gwinegar@dsmre.com
302.283.1800 Office
302.757.5353 Cell

Dann Gladnick
dgladnick@dsmre.com
302.540.8969 Office
302.540.8969 Cell

DSM Commercial
Real Estate Services
3304 Old Capitol Trail
Wilmington, DE 19808
dsmre.com



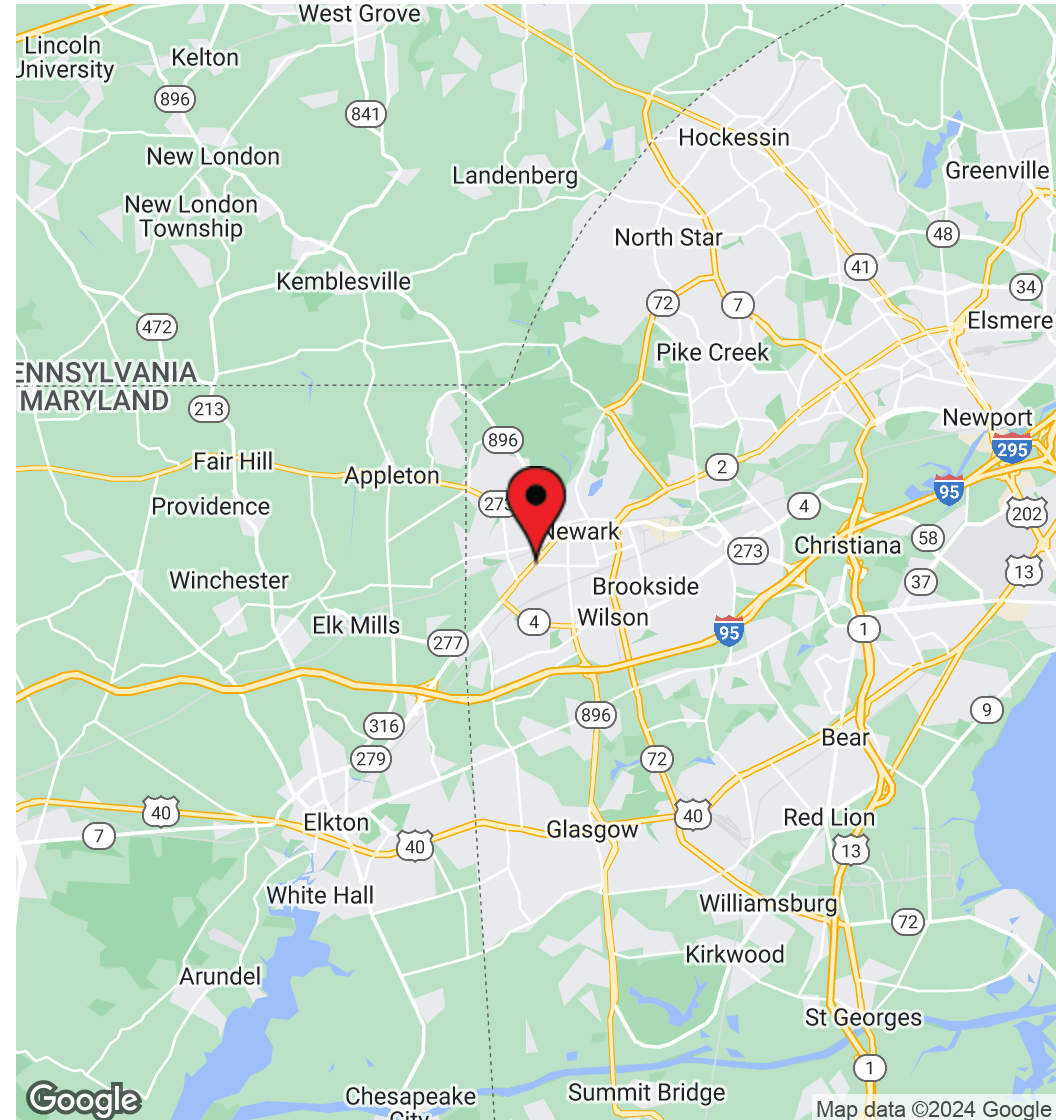
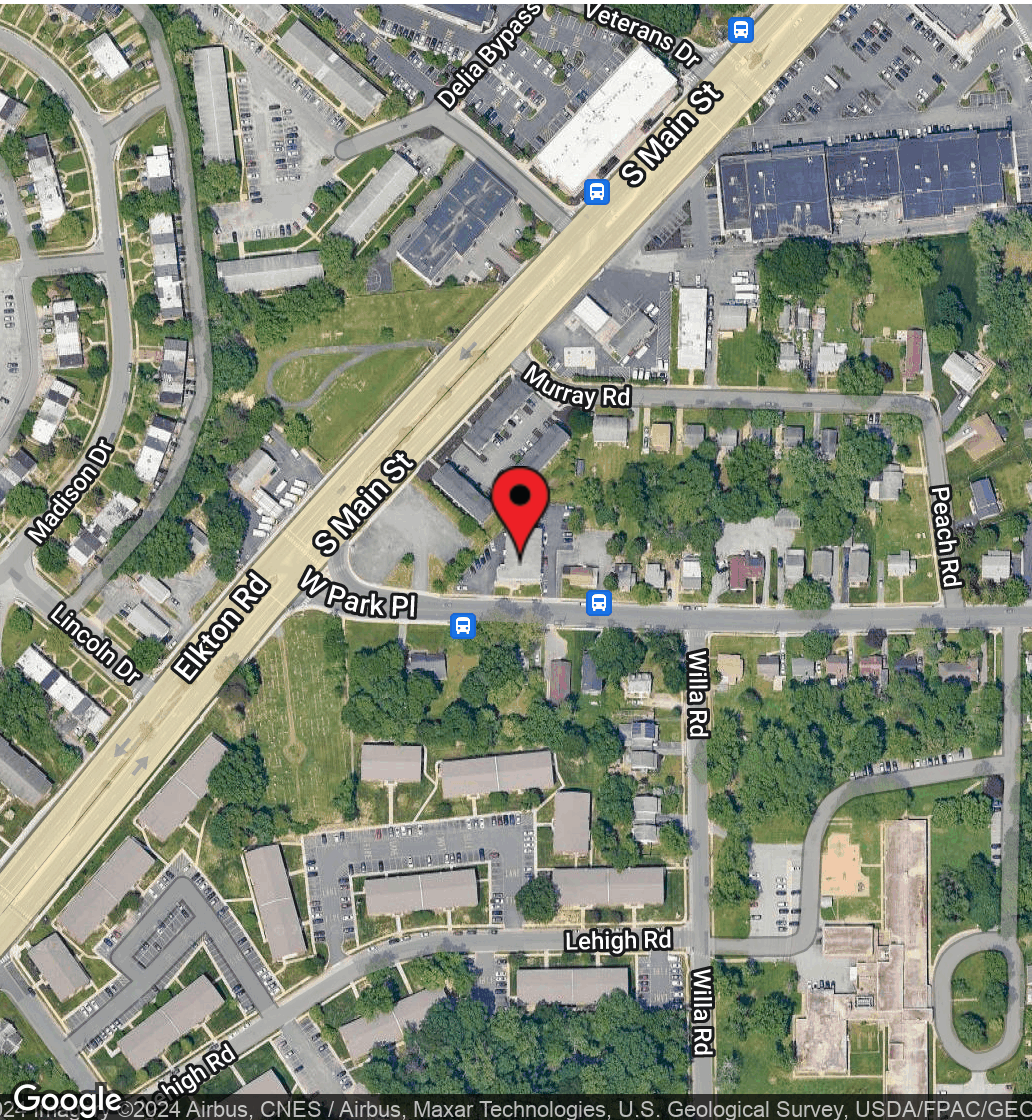
Map data ©2024 Imagery ©2024 Airbus, CNES / Airbus, Maxar Technologies, U.S. Geological Survey, USDA/FPAC/GEO

For More Information, Contact:

Gordon Winegar
gwinegar@dsmre.com
302.283.1800 Office
302.757.5353 Cell

Dann Gladnick
dgladnick@dsmre.com
302.540.8969 Office
302.540.8969 Cell

DSM Commercial
Real Estate Services
3304 Old Capitol Trail
Wilmington, DE 19808
dsmre.com



For More Information, Contact:

Gordon Winegar
gwinegar@dsmre.com
302.283.1800 Office
302.757.5353 Cell

Dann Gladnick
dgladnick@dsmre.com
302.540.8969 Office
302.540.8969 Cell

DSM Commercial
Real Estate Services
3304 Old Capitol Trail
Wilmington, DE 19808
dsmre.com