

# FOR LEASE | DOWNTOWN CLASS A OFFICE SPACE

ONE CITY CENTER, PORTLAND, ME 04101



## PROPERTY HIGHLIGHTS

Multiple suites available for lease in this iconic Class A office tower located in the heart of downtown Portland. One City Center offers many amenities including a 5-story atrium with escalator and glass elevator, a food court, fitness facility, shared conference space, 24-hour security and multiple eateries.

- 210,000± SF, 13-story, Class A office tower
- Downtown location with easy access to I-295 and Maine Turnpike
- Landlord-owned parking garage adjacent to building
- Walking distance to Portland's Old Port and waterfront (Walk Score = 97)
- Space Availability/Lease Rate: See matrix on page 2.



# FOR LEASE | DOWNTOWN CLASS A OFFICE SPACE

ONE CITY CENTER, PORTLAND, ME 04101



## PROPERTY DETAILS

OWNER	One City Center Associates, LLC
ASSESSOR'S REF	Map 32, Block L, Lot 2
BUILDING SIZE	210,000± SF
NO. OF STORIES	Thirteen (13)
YEAR BUILT	1987
ZONING	B3 - Downtown Business
ELEVATOR/ ESCALATOR	Escalators first to second floor and second floor to third floor; Five (5) passenger elevators
SPRINKLER	Yes, wet system
UTILITIES	Municipal water and sewer
HVAC	Central HVAC

AMENITIES	Full-service food court, on-site management, 24-hour security, fitness facility, parking garage, access to large conference room
PARKING	Below market rates in Landlord-owned garage.
AVAILABILITY	Immediately
OTHER ONE CITY CENTER TENANTS	Bank of America The Bay Club (gym) Dunkin Donuts Citrus City Deli David R. Beneman - Federal Public Defender Dirigo Management Group General Services Administration MainePERS Medical Mutual Insurance Company of Maine Monks O'Neil Development LLC Preti Flaherty Beliveau & Pachios LLP

## AVAILABILITY & LEASE RATES

FLOOR	SIZE (SF)	LAYOUT	LEASE RATE*
2	2,675±	Unfinished, Landlord to build out per Tenant's specifications.	\$23.50/sf MG
3	3,500±	Unfinished, Landlord to build out per Tenant's specifications.	\$23.50/sf MG

\*Lease rate includes heat.

**Additional 7th floor suite available Q1 2024 (12,893± SF). See Broker for details.**

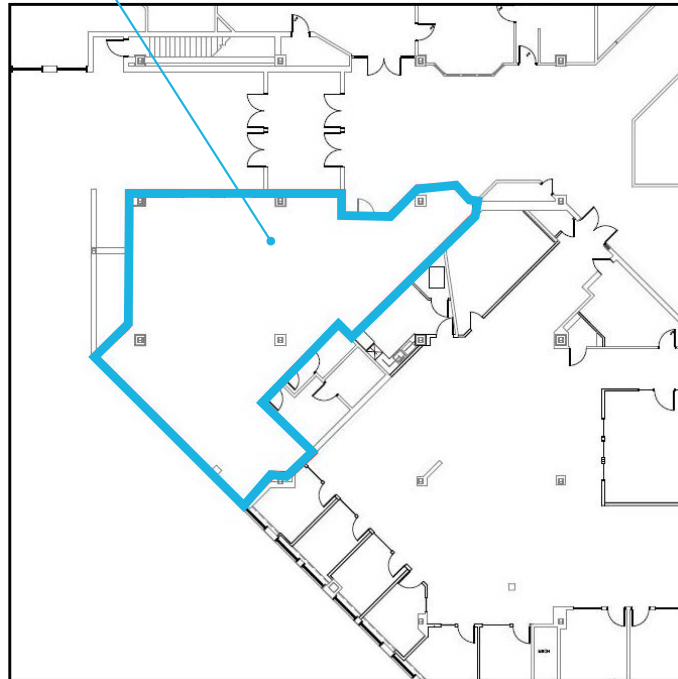
# FOR LEASE | DOWNTOWN CLASS A OFFICE SPACE

ONE CITY CENTER, PORTLAND, ME 04101

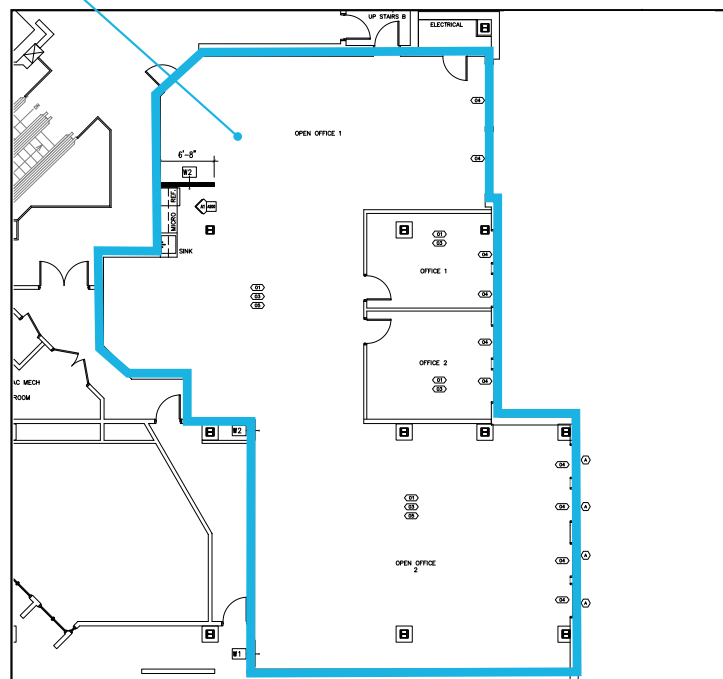


## FLOOR PLANS

SECOND FLOOR  
2,675± SF



THIRD FLOOR  
3,500± SF





# FOR LEASE | DOWNTOWN CLASS A OFFICE SPACE

ONE CITY CENTER, PORTLAND, ME 04101



## CONTACT US



**TONY MCDONALD, CCIM/SIOR**  
Partner

+1 207.553.1704 D

+1 207.749.1000 C

[tmcdonald@boulos.com](mailto:tmcdonald@boulos.com)



**JOHN FINEGAN**  
Associate Broker

+1 207.553.1718 D

+1 207.829.8305 C

[jfinegan@boulos.com](mailto:jfinegan@boulos.com)



©2023 The Boulos Company, Inc. All rights reserved. This information has been obtained from sources believed reliable, but has not been verified for accuracy or completeness. You should conduct a careful, independent investigation of the property and verify all information. Any reliance on this information is solely at your own risk. The Boulos Company and The Boulos Company logo are service marks of The Boulos Company, Inc. All other marks displayed on this document are the property of their respective owners. Photos herein are the property of their respective owners. Use of these images without the express written consent of the owner is prohibited.