

2310 PEACHFORD ROAD

Dunwoody, GA 30338



PROPERTY FEATURES

- +/- 4,400 SF Available
- Fully built-out, plug-and-play layout with furniture available
- Mix of private offices and open work areas
- Central core with restrooms and stairwell access for efficient flow
- Abundant natural light with dual entry points and flexible configuration
- 0.7 miles from I-285
- 2 miles from GA-141

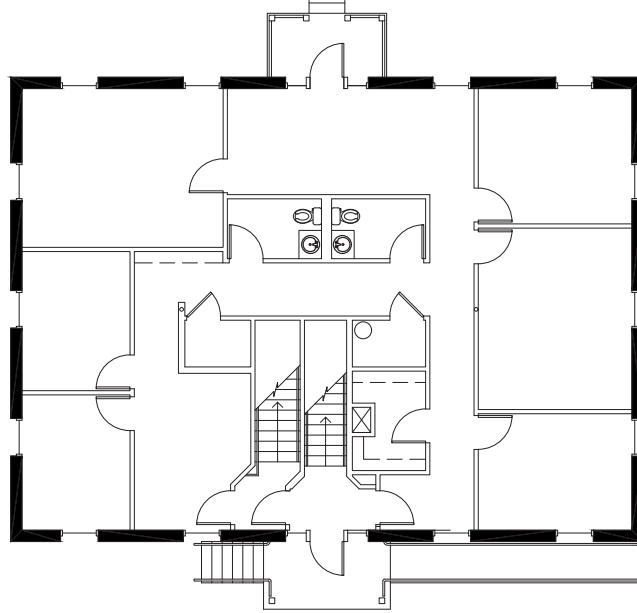


BRADY EMICH
Associate
brady.emich@streamrealty.com
T 404.962.8641


STREAM[®]

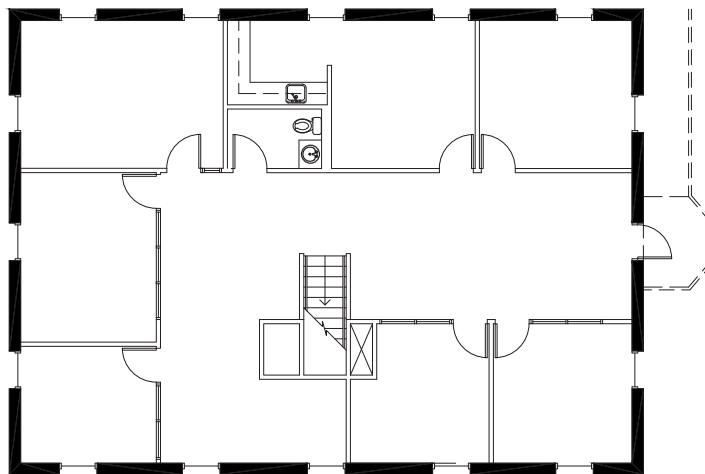
2310 PEACHFORD ROAD

Dunwoody, GA 30338



First Level

2,200 SF



Second Level

2,200 SF

2310 PEACHFORD ROAD

Dunwoody, GA 30338



BRADY EMICH
Associate
brady.emich@streamrealty.com
T 404.962.8641


STREAM[®]