

CLOSE-IN CENTRAL EASTSIDE PROFESSIONAL OFFICE SPACE

Mt. Everest Building 819 SE Morrison Street, Portland OR 97214

FOR LEASE



The Mt. Everest Building, at the east end of the Morrison Bridge, is located in the heart of an actively-redeveloping and creative-minded area of SE Portland aptly named the “Innovation Quadrant.” At 18,500 sq ft, the Mt. Everest Building offers 3 floors of high quality, professional office space with amenities to match: furnished lobby and ample seating, water feature, elevator, on-site guest parking, commuter showers and bike parking, conference room, and wi-fi. The building was remodeled sustainably “green,” with LED lighting and high-efficiency mechanical and plumbing systems. The location is 1 block down from the newly-redeveloped Goat Blocks, has a Walk Score of 88, a Bike Score of 96, and is extremely convenient to Downtown Portland, I-5 and I-84.

Tricia Anderson

tricia@northrimpdx.com | [503.525.1927](tel:503.525.1927)



northrimpdx.com

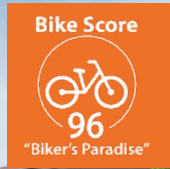
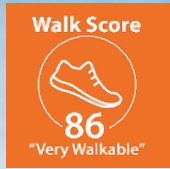
819 SE Morrison Street, Ste 110, Portland OR 97214 | [503.525.1925](tel:503.525.1925)

Matthew Schweitzer | matt@northrimpdx.com | [503.381.3134](tel:503.381.3134)

CLOSE-IN CENTRAL EASTSIDE PROFESSIONAL OFFICE SPACE

Mt. Everest Building 819 SE Morrison Street, Portland OR 97214

FOR LEASE



Property Details

- Furnished lobby with water feature
- Common area conference room
- Elevator serves all 4 levels
- ADA Accessible; restrooms on 3 floors
- High ceilings with exposed beams
- Guest wi-fi and 24/7 access system
- High-efficiency HVAC and LEDs

Commuter Amenities

- Guest parking on lower level
- Bike racks
- Private shower facility

Location Details

- Central Eastside Industrial District near restaurants, grocery, fitness, brew pubs, and bakeries
- At Tri-Met bus stop for Line 15
- Easy access I-5 and I-84
- Walking distance to downtown Portland via the Morrison Bridge

Demographics (within 1 mile for 2024)

- Estimated Population: 23,211
- Projected Population (2029): 24,489
- Average Household Income: \$97,571
- Average Age: 39.33

Daily Traffic Count

(SE Morrison Street & SE 8th Avenue)

TOTAL: 7,656

Tricia Anderson
tricia@northrimpx.com | [503.525.1927](tel:503.525.1927)



northrimpx.com

819 SE Morrison Street, Ste 110, Portland OR 97214 | [503.525.1925](tel:503.525.1925)

Matthew Schweitzer | matt@northrimpx.com | [503.381.3134](tel:503.381.3134)



FURNISHED LOBBY



WATER FEATURE AT THE BUILDING ENTRANCE



COMMON AREA CONFERENCE ROOM

CLOSE-IN CENTRAL EASTSIDE PROFESSIONAL OFFICE SPACE

Mt. Everest Building 819 SE Morrison Street, Portland OR 97214

FOR LEASE

Tricia Anderson
tricia@northrimpx.com | [503.525.1927](tel:503.525.1927)



northrimpx.com

819 SE Morrison Street, Ste 110, Portland OR 97214 | [503.525.1925](tel:503.525.1925)

Matthew Schweitzer | matt@northrimpx.com | [503.381.3134](tel:503.381.3134)



SUITE #220



3D
Virtual Tour



tinyurl.com/Everest115

SUITE #115



3D
Virtual Tour



tinyurl.com/MtEverest215

SUITE #215

CLOSE-IN CENTRAL EASTSIDE PROFESSIONAL OFFICE SPACE

Mt. Everest Building 819 SE Morrison Street, Portland OR 97214

FOR LEASE

Tricia Anderson
tricia@northrimpx.com | [503.525.1927](tel:503.525.1927)



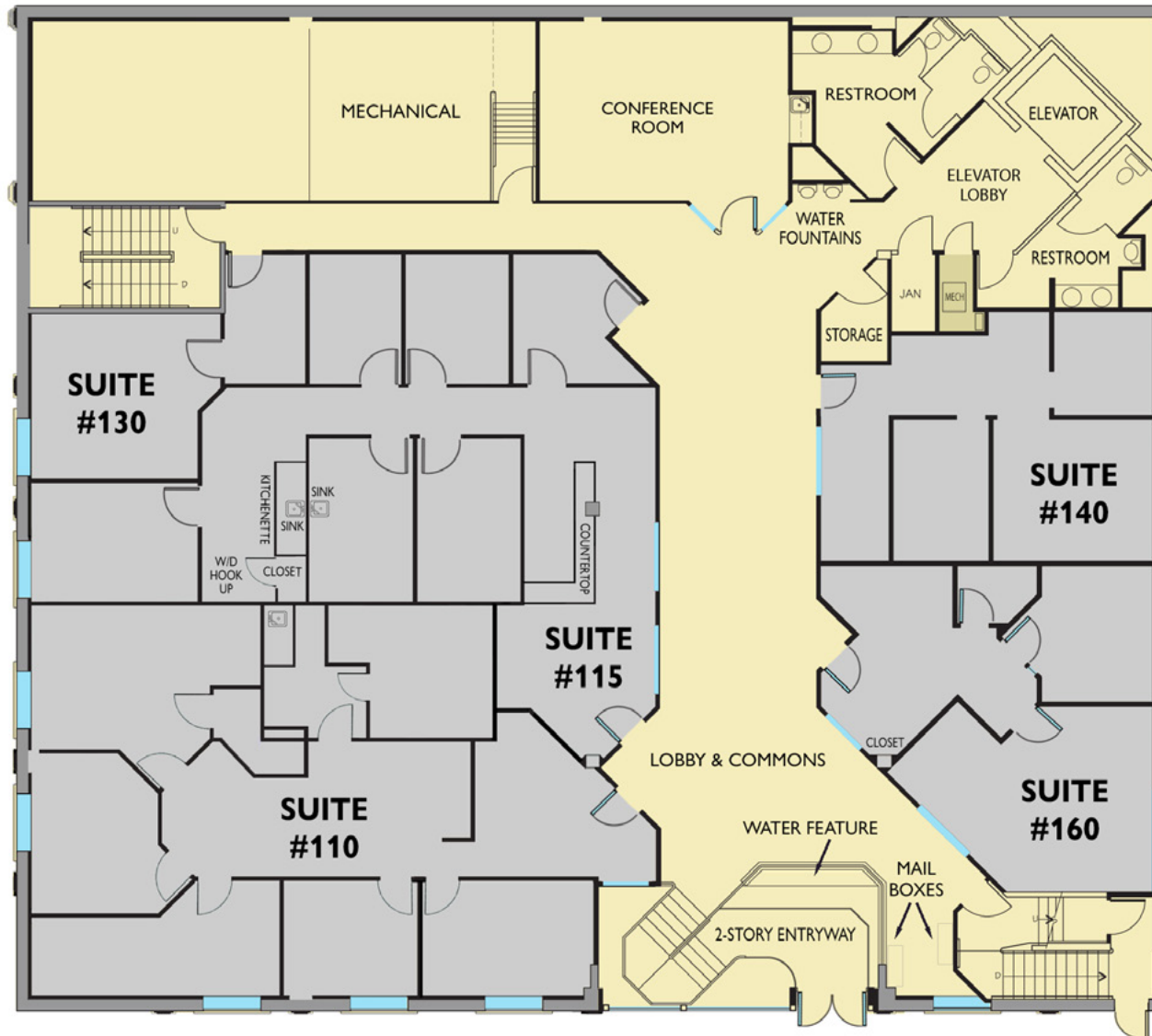
northrimpx.com

819 SE Morrison Street, Ste 110, Portland OR 97214 | [503.525.1925](tel:503.525.1925)

Matthew Schweitzer | matt@northrimpx.com | [503.381.3134](tel:503.381.3134)

FLOOR PLAN

1st Floor



CLOSE-IN CENTRAL EASTSIDE PROFESSIONAL OFFICE SPACE

Mt. Everest Building 819 SE Morrison Street, Portland OR 97214

FOR LEASE

Tricia Anderson
tricia@northrimpx.com | [503.525.1927](tel:503.525.1927)

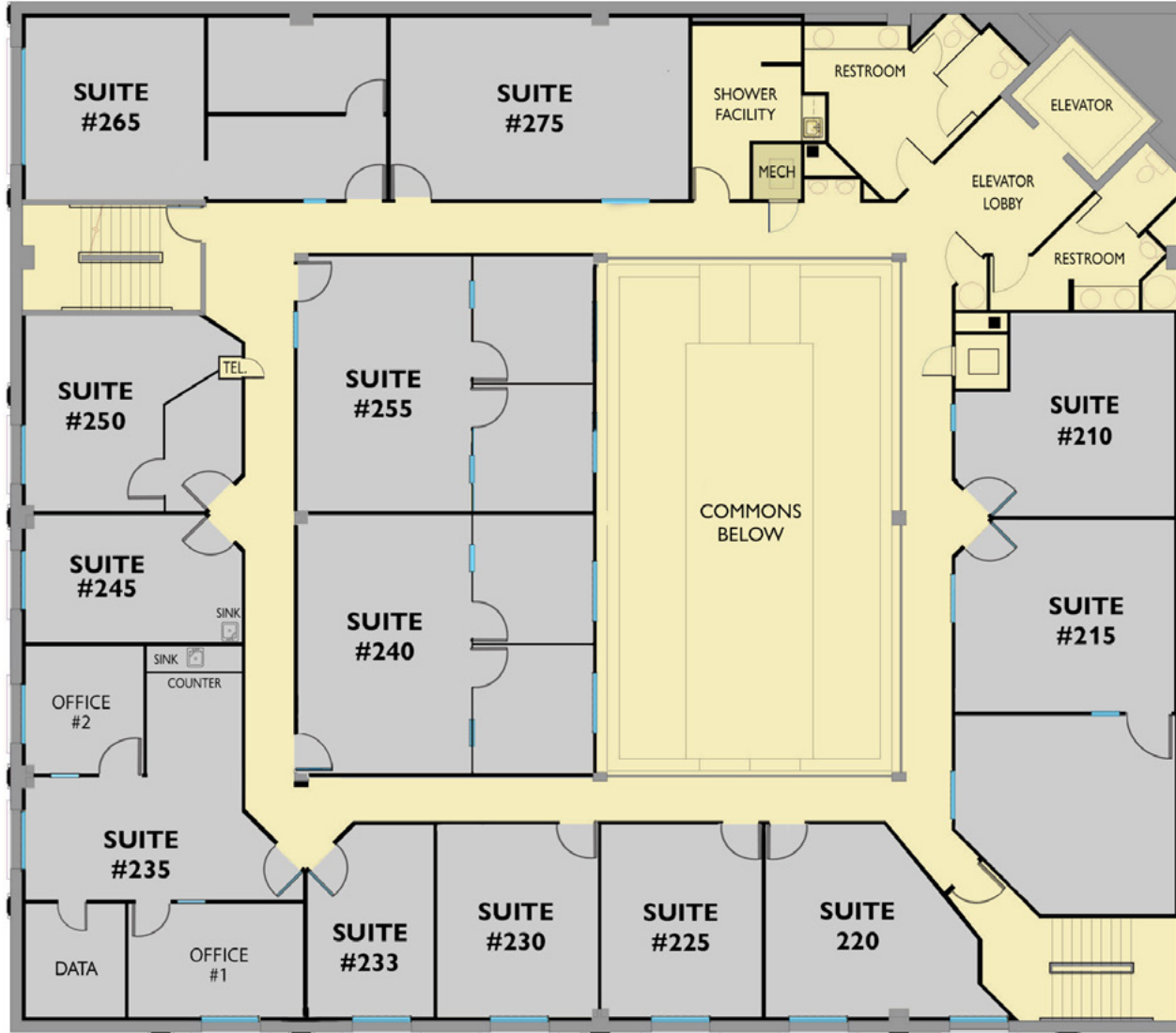


northrimpx.com

819 SE Morrison Street, Ste 110, Portland OR 97214 | [503.525.1925](tel:503.525.1925)
Matthew Schweitzer | matt@northrimpx.com | [503.381.3134](tel:503.381.3134)

FLOOR PLAN

2nd Floor



CLOSE-IN CENTRAL EASTSIDE PROFESSIONAL OFFICE SPACE

Mt. Everest Building 819 SE Morrison Street, Portland OR 97214

FOR LEASE

Tricia Anderson
tricia@northrimpx.com | [503.525.1927](tel:503.525.1927)



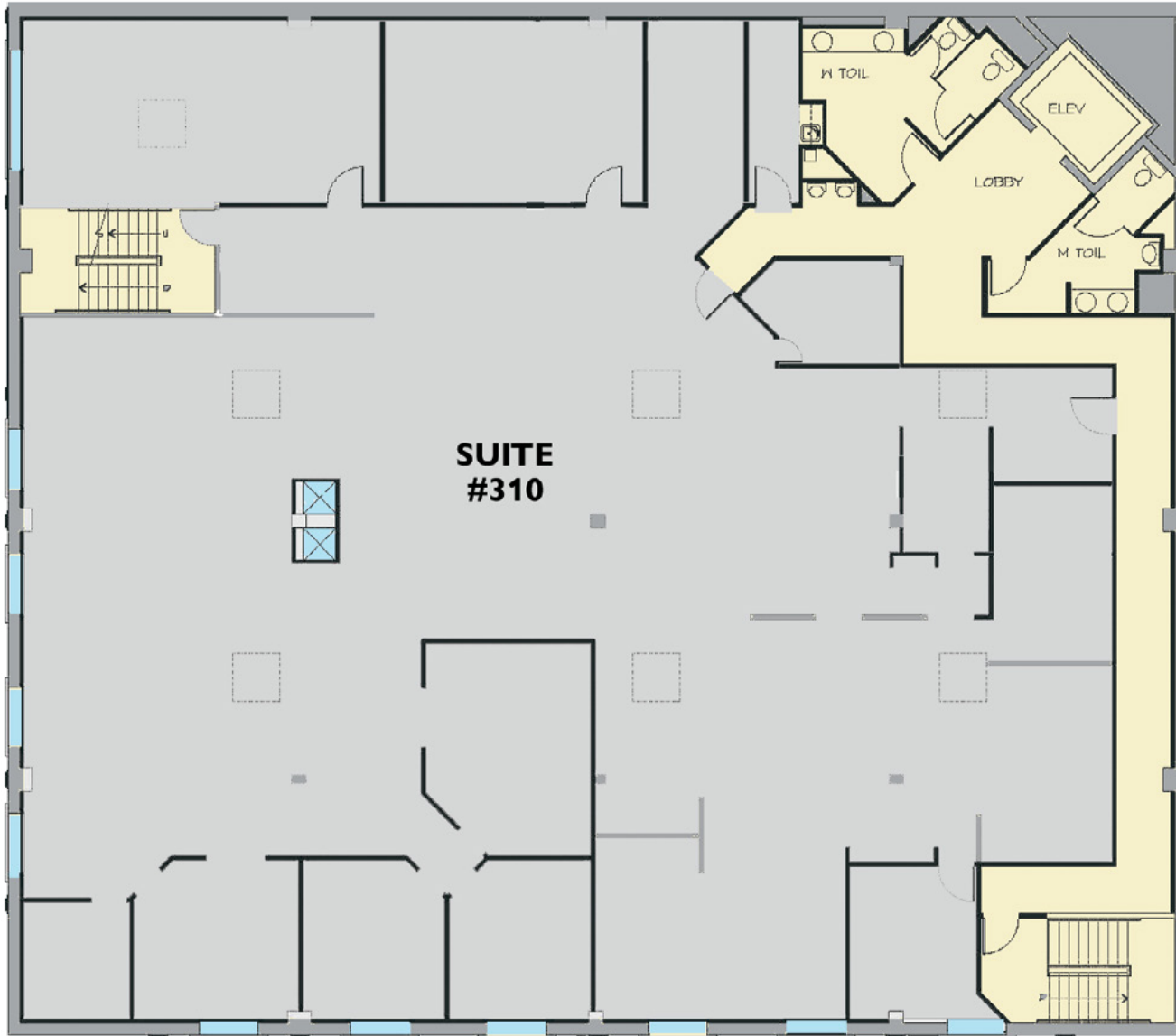
northrimpx.com

819 SE Morrison Street, Ste 110, Portland OR 97214 | [503.525.1925](tel:503.525.1925)

Matthew Schweitzer | matt@northrimpx.com | [503.381.3134](tel:503.381.3134)

FLOOR PLAN

3rd Floor



CLOSE-IN CENTRAL EASTSIDE PROFESSIONAL OFFICE SPACE

Mt. Everest Building 819 SE Morrison Street, Portland OR 97214

FOR LEASE

Tricia Anderson
tricia@northrimpx.com | [503.525.1927](tel:503.525.1927)



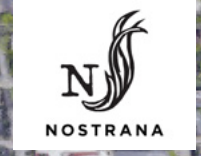
northrimpx.com

819 SE Morrison Street, Ste 110, Portland OR 97214 | [503.525.1925](tel:503.525.1925)
Matthew Schweitzer | matt@northrimpx.com | [503.381.3134](tel:503.381.3134)



Portland Saturday Market

Burnside Bridge



SE Morrison St

SE Belmont St



SE Hawthorne Blvd



Tricia Anderson
tricia@northrimpx.com | 503.525.1927



northrimpx.com
 819 SE Morrison Street, Ste 110, Portland OR 97214 | 503.525.1925
 Matthew Schweitzer | matt@northrimpx.com | 503.381.3134