

# HIGH-IMAGE INDUSTRIAL FLEX FACILITY OFFICE & FLEX / R&D SPACE

2848 Columbia St, Torrance, CA 90503

**FOR LEASE**  
**±5,915 SF**  
(±1,462 SF Warehouse)



## PROPERTY FEATURES

- 5,915 SF FLEX SPACE
- Including ±1,462 SF WAREHOUSE (APPROX. 26' CLEARANCE)
- ±4,453 SF OFFICE SPACE
- FULLY SPRINKLERED (Warehouse / Office)
- 22 PARKING STALLS (3.72 PER 1,000SF)
- LOADING DOOR (APPROX 12' X 14')
- VERSATILE ZONING ALLOWS FOR A WIDE VARIETY OF COMMERCIAL AND INDUSTRIAL USE



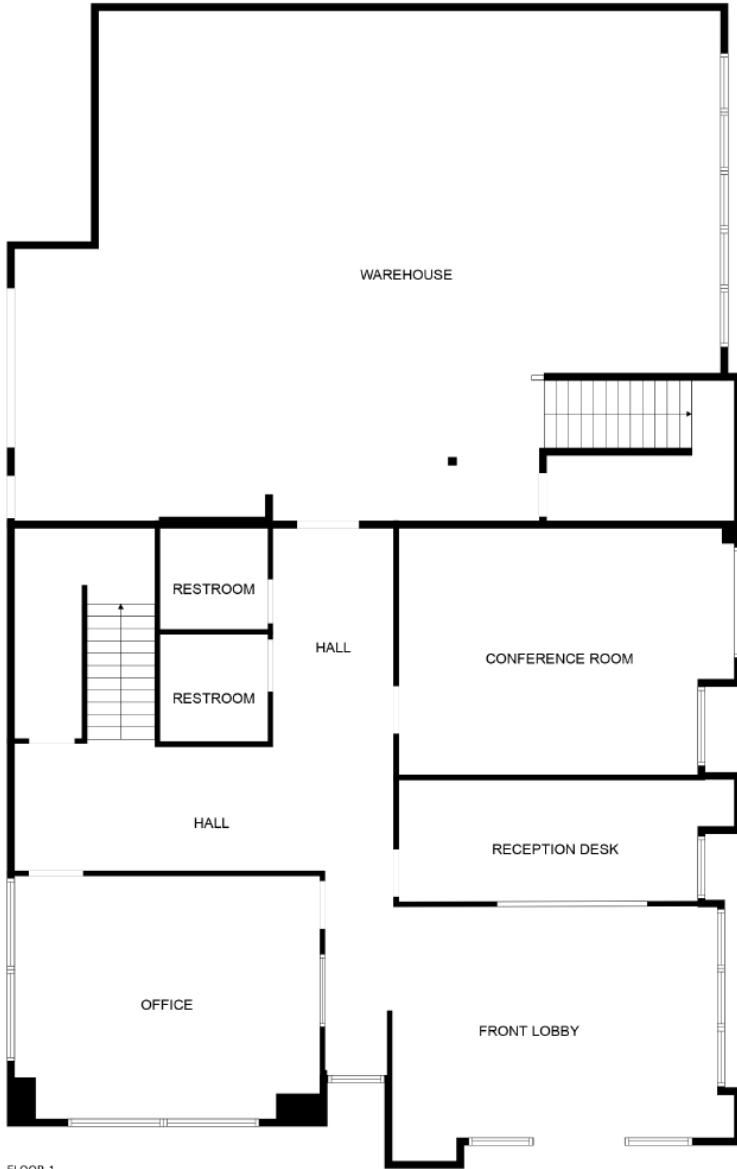
**SOLIDON**  
**REAL ESTATE**

Ki Kim  
(310) 800 - 7004  
Ki@SolidonCorp.com  
DRE 01997512

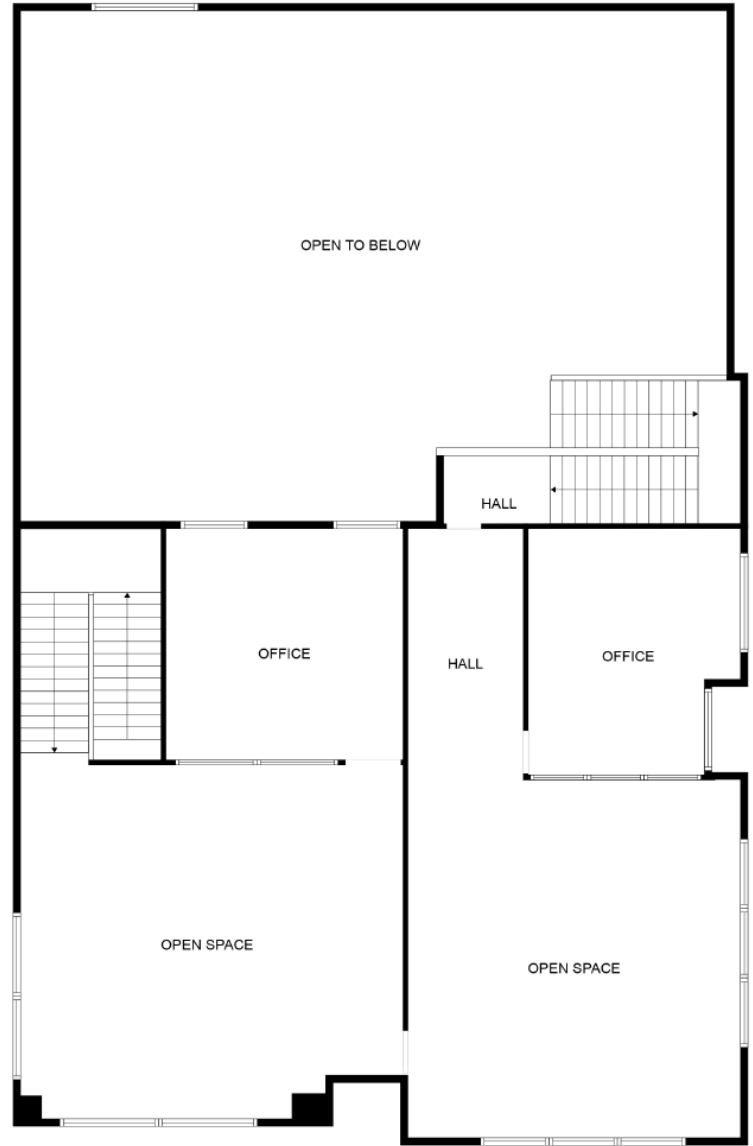
Jae Lee  
(310) 613 - 6862  
Jae@SolidonCorp.com  
DRE 01060637

# FLOOR PLAN

Disclaimer: This drawing/model/image is for illustrative purposes only and is not to scale



FLOOR 1



FLOOR 2



Although information has been obtained from sources deemed reliable, neither Owner nor Solidon Real Estate makes any guarantees, warranties or representations, express or implied, as to the completeness or accuracy as to the information contained herein. Any projections, opinions, assumptions or estimates used are for example only. There may be differences between projected and actual results, and those differences may be material. The Property may be withdrawn without notice. Neither Owner nor Solidon Real Estate accepts any liability for any loss or damage suffered by any party resulting from reliance on this information.



**SOLIDON**

**Ki Kim**  
**(310) 800 - 7004**  
**Ki@SolidonCorp.com**  
**DRE 01997512**

**Jae Lee**  
**(310) 613 - 6862**  
**Jae@SolidonCorp.com**  
**DRE 01060637**