



FOR SALE or For Lease

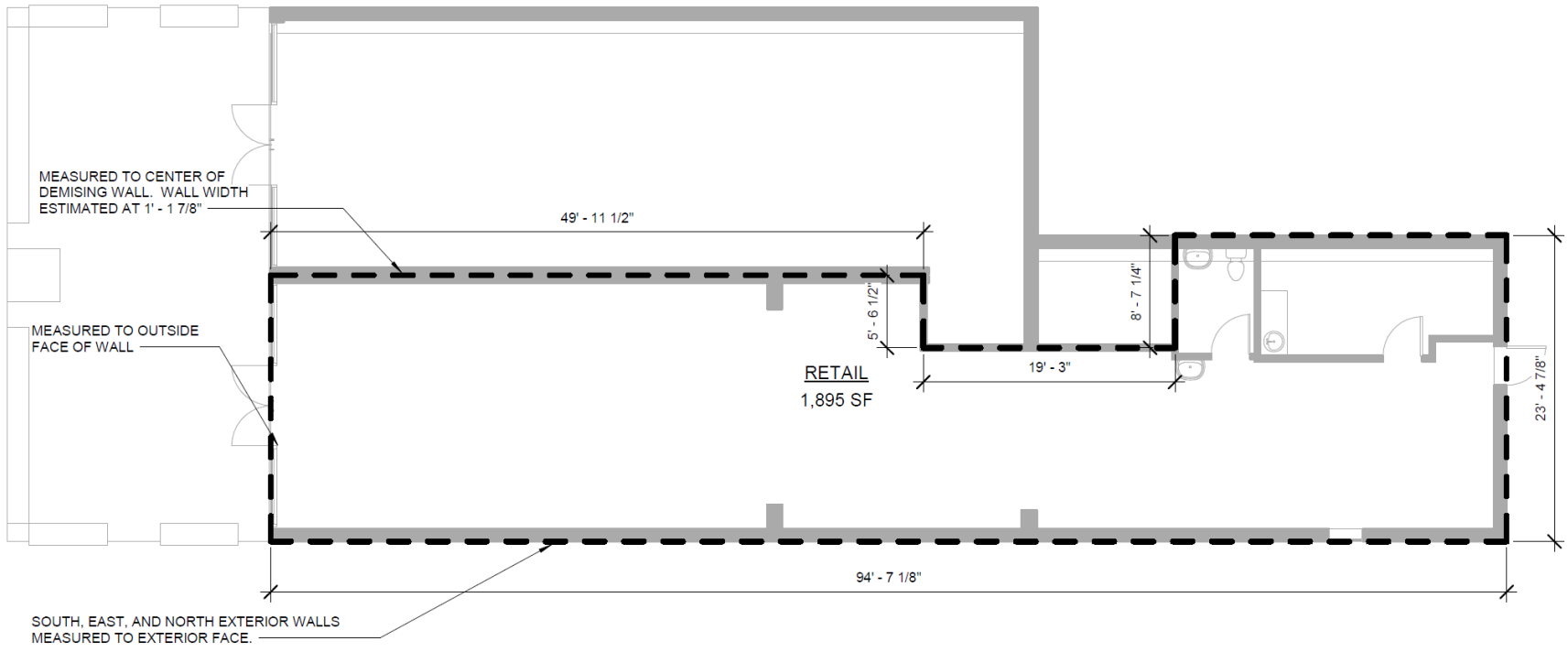
248-250 DETROIT STREET
a cherry creek north property





Offering:

- Property: 248-250 Street, Denver, CO 80206
- Zoning: C-CCN-5
- Lot Size: 5,563 SF
- Building Size: 3,267 SF
- Year Built: 1981 Revovated 2024
- Sales Price: Upon Request
- Parking: 5 Reserved On Site Spaces
- 248 Detroit Street - 1,895 Square Feet
- 250 Detroit Street - 1,372 Square Feet





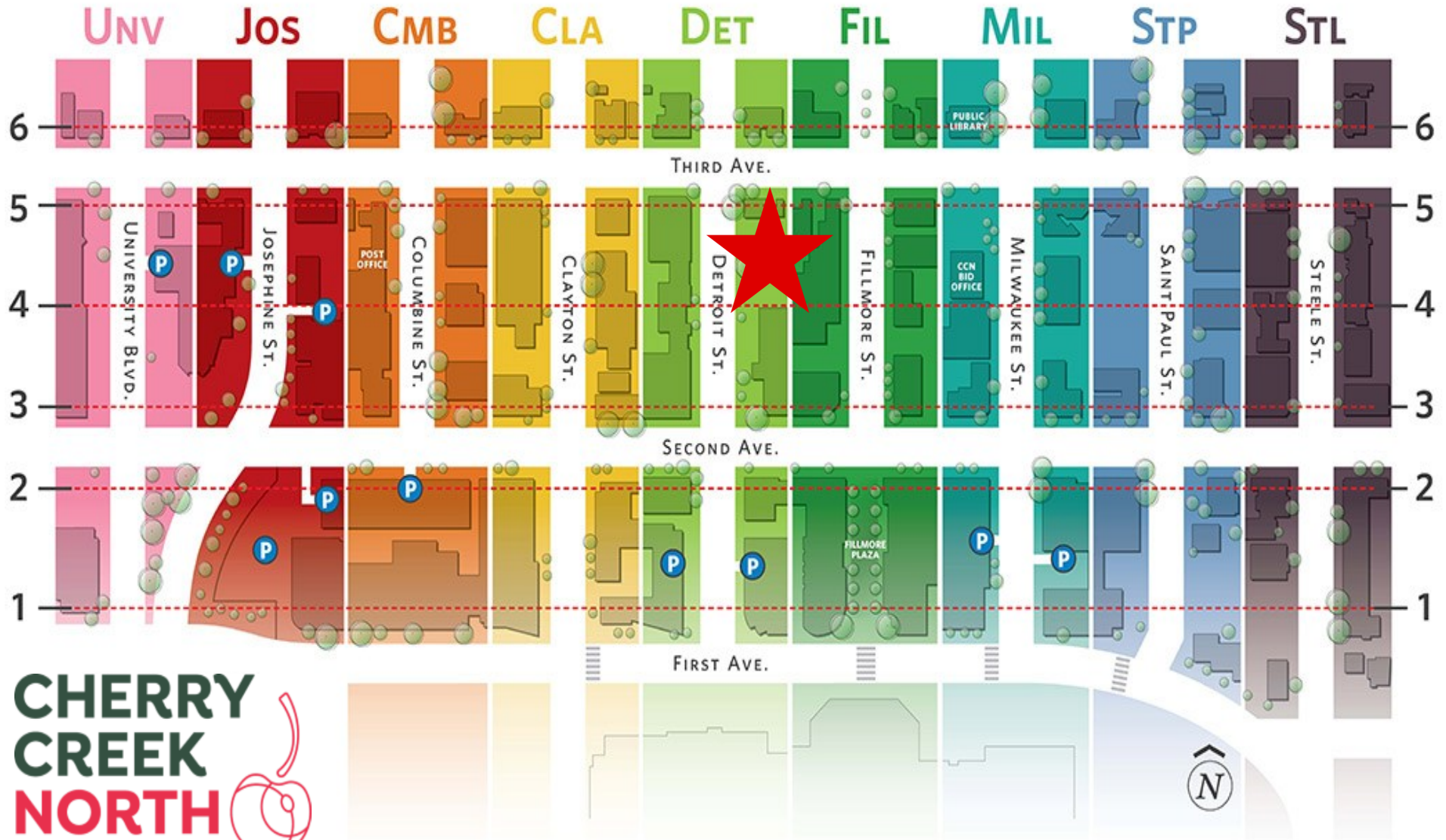
Cherry Creek North, the preeminent residential, retail and office district in Colorado and the Rocky Mountain region.

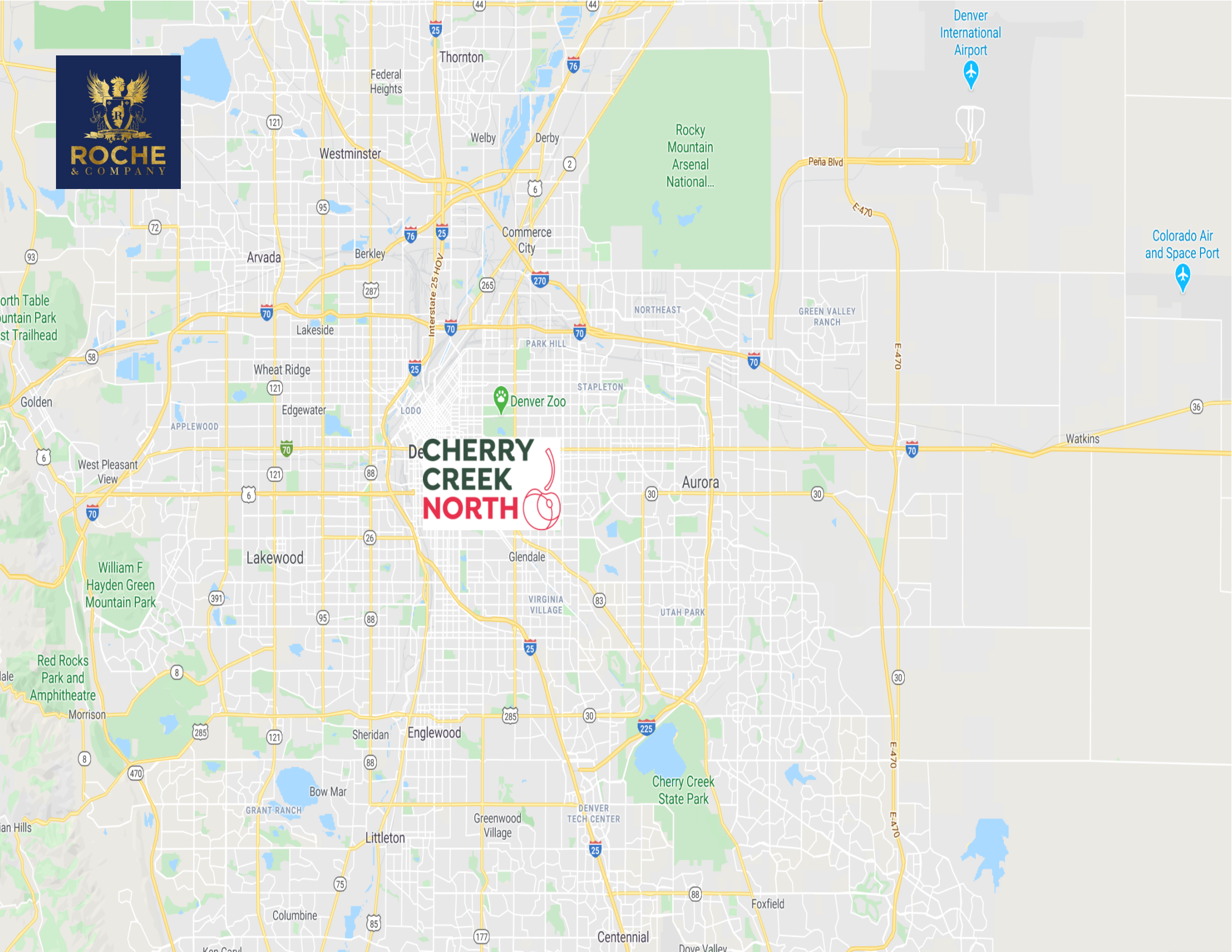
One hundred and forty years ago, Cherry Creek North was part of a small town called Harman. Since then, Cherry Creek North has emerged as a staple in the fabric of Denver and Colorado, blossoming into a very special mixed-use district.

Today, nearly 600 businesses make up the area's 16 walkable blocks, where you can find a variety of independent and international retailers featuring unique fashion, jewelry and home furnishing stores, spas, salons, art galleries, and restaurants.

Cherry Creek North's future is bright. More residential mid-rises, luxury hotels and state-of-the-art office buildings are developing throughout the district. In the last five years alone, residential units have increased 23%, hotel rooms have increased 69%, office space has increased 22% and retail space has increased 19%. The development has resulted in new, unique businesses opening their doors, treasured retailers expanding their spaces and more visitors dubbing Cherry Creek North their favorite destination.

With an exceptional mix of classic and contemporary retail and restaurants, a great lineup of events year round, and more grand openings on the way, Cherry Creek North has it all.





De**CHERRY
CREEK
NORTH**

Denver International Airport

Colorado Air and Space Port

Rocky Mountain Arsenal National...

Thornton

Westminster

Arvada

Wheat Ridge

Lakewood

Sheridan

Columbine

Welby

Derby

Commerce City

PARK HILL

Denver Zoo

Glendale

Greenwood Village

Centennial

Aurora

Cherry Creek State Park

Foxfield

Peña Blvd

GREEN VALLEY RANCH

UTAH PARK

DENVER TECH CENTER

Dove Valley

E-470

30

E-470

E-470

Watkins

North Table Mountain Park
East Trailhead

Golden

West Pleasant View

William F Hayden Green Mountain Park

Red Rocks Park and Amphitheatre

Morrison

Ken Caryl

Ken Caryl

121

95

70

121

6

121

391

8

121

285

75

85

25

76

25

70

70

25

285

25

177

44

76

2

6

265

270

83

83

25

25

E-470

E-470

E-470

70

30

30

E-470

E-470

E-470

36



Roche Fore

Principal / Managing Broker

Roche & Company

219 Detroit Street

Denver, Colorado 80206

Web: www.rochecompany.com

Email: roche@rochecompany.com