

# PLAZA PARK

7505 – 7563 SOUTH FWY HOUSTON, TX 77021



**SOUTH INNER LOOP  
SUBMARKET**



**GREAT ACCESS TO I-610,  
HWY-90, AND HWY-288**



**14' CLEAR HEIGHT**



**TENANT-CONTROLLED HVAC**



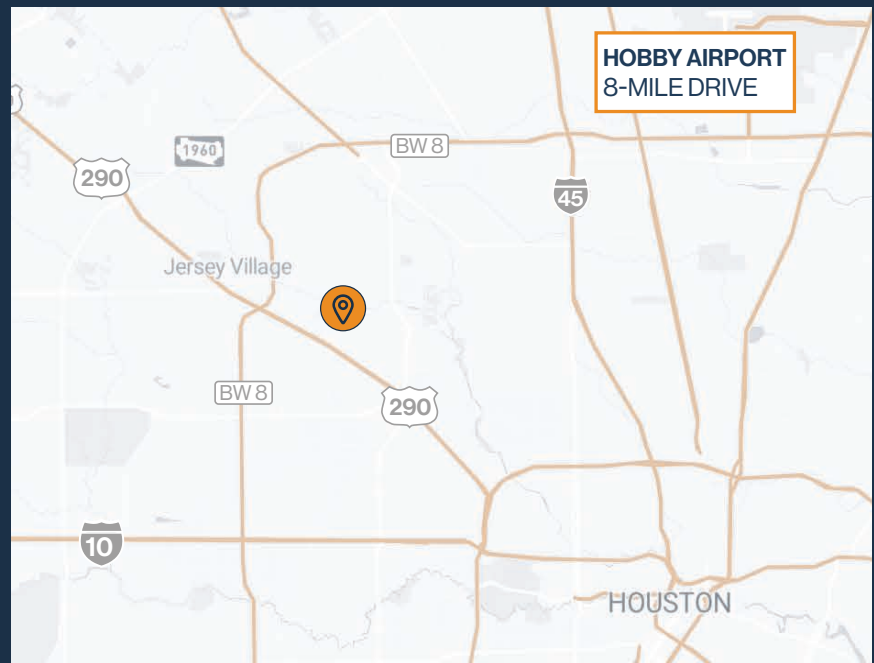
**GRADE-LEVEL AND  
DOCK LOADING**



**GLASS STOREFRONT**



**2,017 SF – 13,335 SF  
SUITES AVAILABLE**



**THOMAS PFEIFER**



281.504.7460



THOMAS.PFEIFER@FORT-COMPANIES.COM



**FORT**  
LEASING

This information is deemed reliable, however, Fort makes no guarantee, warranties, or representations as to the completeness or accuracy thereof.



### SITE PLAN



**THOMAS PFEIFER**



281.504.7460



THOMAS.PFEIFER@FORT-COMPANIES.COM



## FLOOR PLAN — AVAILABLE IMMEDIATELY

- » 5,430 SF Total Available
  - » 1,086 SF Office
  - » 4,344 SF Warehouse
- » 3 Phase Power (250 Amps)
- » (1) Semi-Dock Door



**THOMAS PFEIFER**



281.504.7460

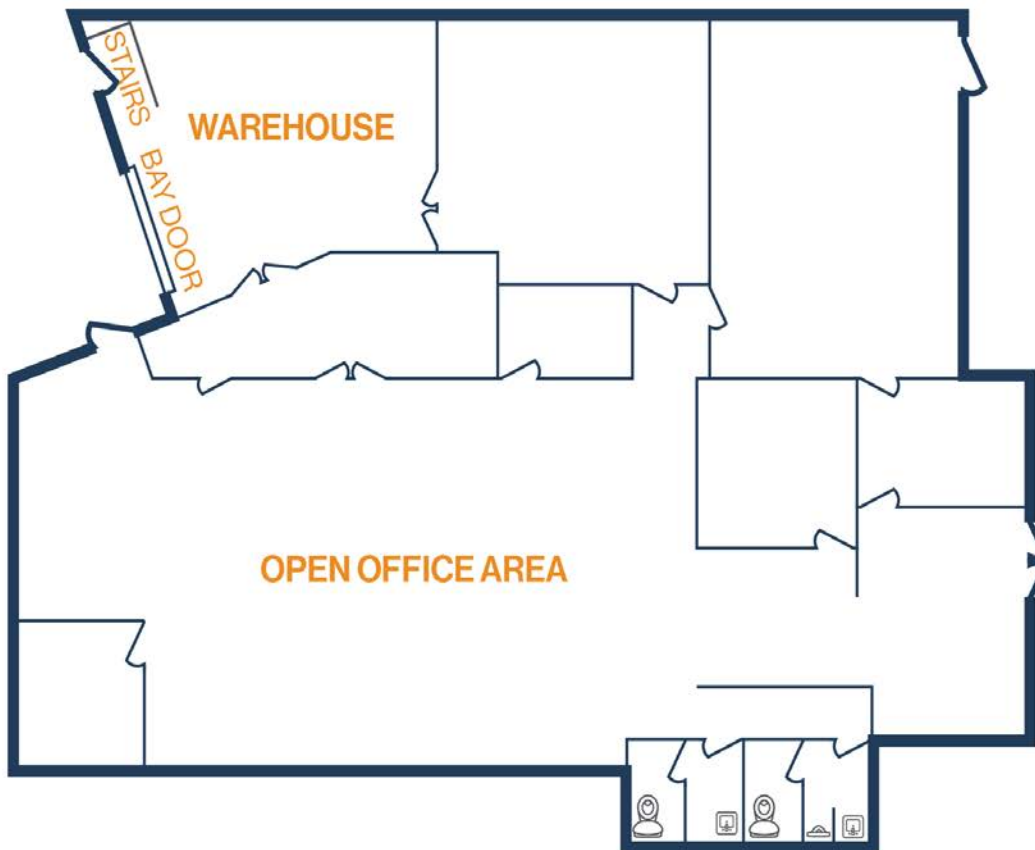


THOMAS.PFEIFER@FORT-COMPANIES.COM



## FLOOR PLAN — AVAILABLE IMMEDIATELY

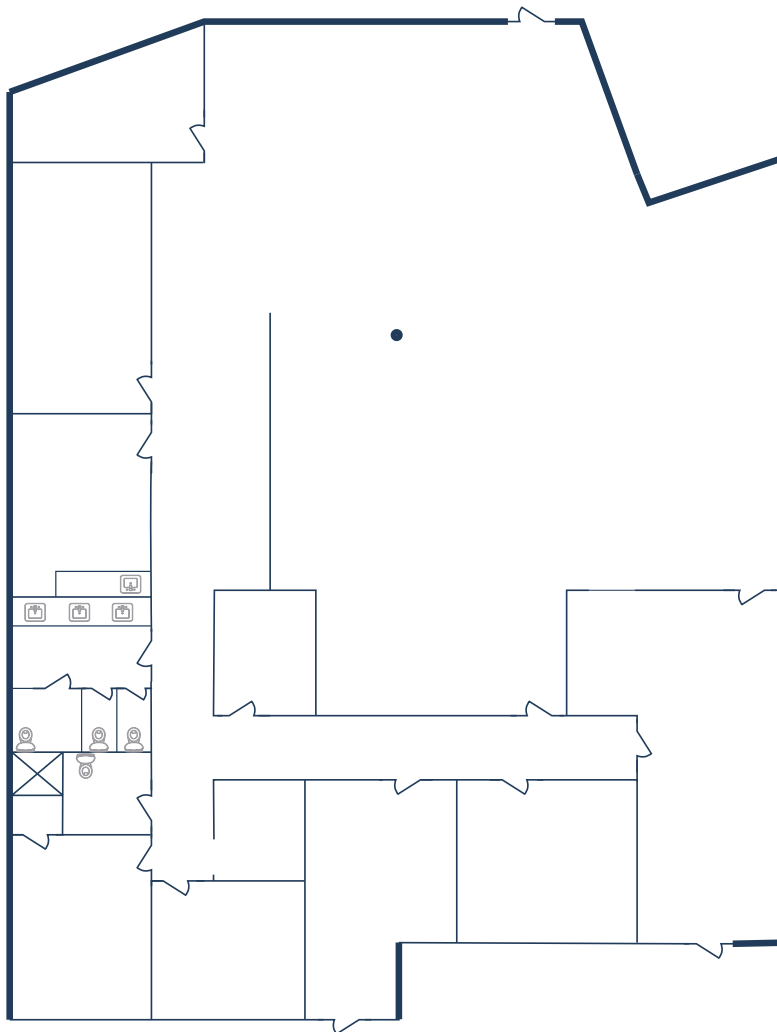
- » 5,269 SF Total Available
- » (1) Ramp
- » 4,742 SF Office
- » 527 SF Warehouse





## FLOOR PLAN — AVAILABLE IMMEDIATELY

- » 4,158 SF Total Available
- » 100% Office
- » Glass Storefront



**THOMAS PFEIFER**



281.504.7460



THOMAS.PFEIFER@FORT-COMPANIES.COM