

**SUB
LEASE**

Flexible Office

8433 Erle Road | Mechanicsville, VA 23116



**COMMONWEALTH
COMMERCIAL**
Comprehensive Property Solutions



PROPERTY HIGHLIGHTS

- › Flexible Office for Sublease
- › Up to 3,831 ± SF of open office/conference/private office space
- › 2 bathrooms and breakroom
- › Up to 15 additional private offices available for single tenant or co-working
- › Available until 6/28/2030
- › Contact agents for pricing

FOR MORE INFORMATION:

ETHAN LUSTIG

Sales & Leasing Associate

804-592-7579

elustig@commonwealthcommercial.com

COLLINS BURLEE

Sales & Leasing Associate

804-630-0024

cburlee@commonwealthcommercial.com

MADDIE STRIEFFLER

Sales & Leasing Associate

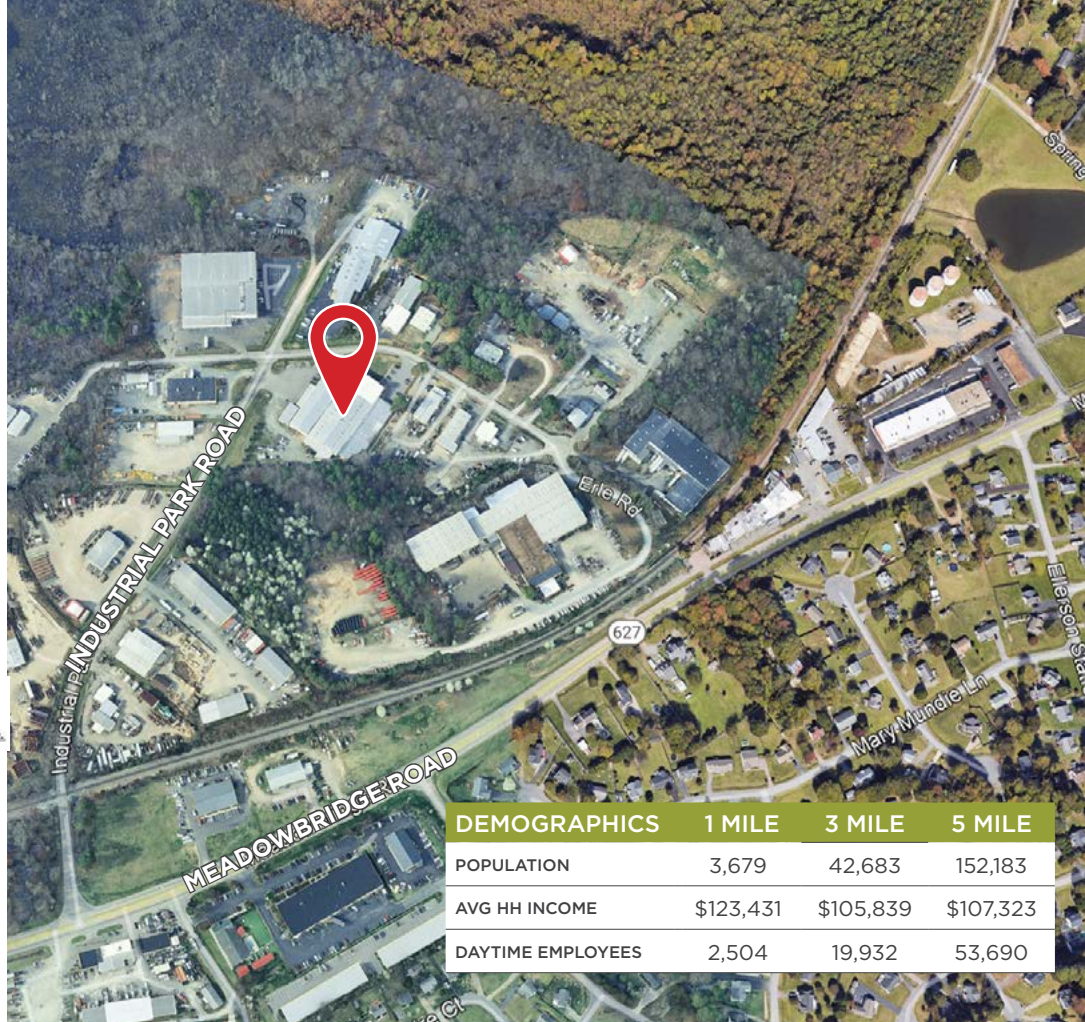
804-793-0050

mstrieffler@commonwealthcommercial.com

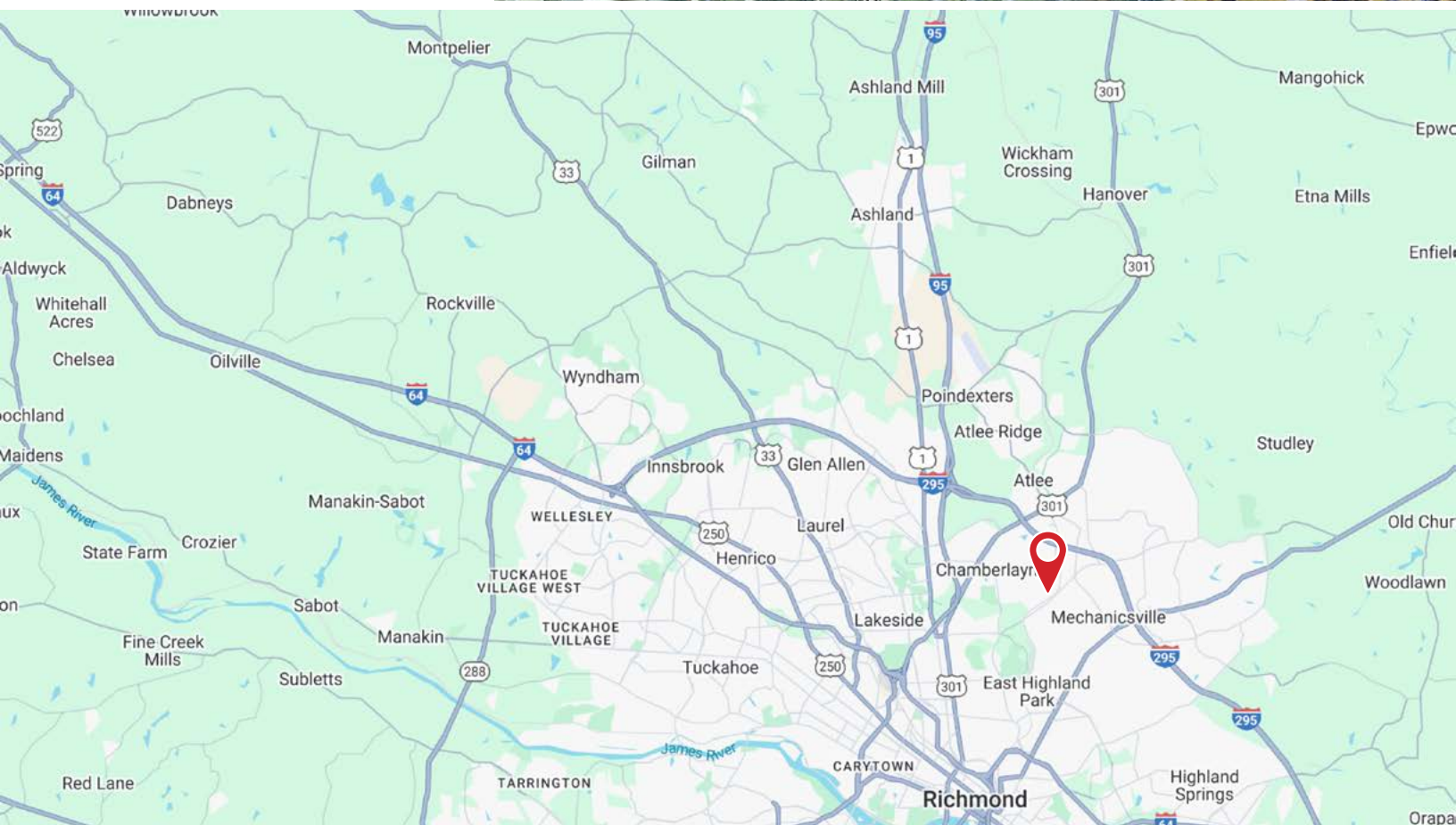
Commonwealth Commercial Partners, LLC represents the Landlord of this property. Information contained herein is deemed reliable but is not guaranteed.



NEARBY BUSINESSES



DEMOGRAPHICS	1 MILE	3 MILE	5 MILE
POPULATION	3,679	42,683	152,183
AVG HH INCOME	\$123,431	\$105,839	\$107,323
DAYTIME EMPLOYEES	2,504	19,932	53,690



FOR SUBLEASE | 8433 ERLE ROAD | MECHANICSVILLE, VA 23116

