

COMMERCIAL LAND FOR SALE

State Route 28 & Patricia Blvd. Goshen, OH 45122



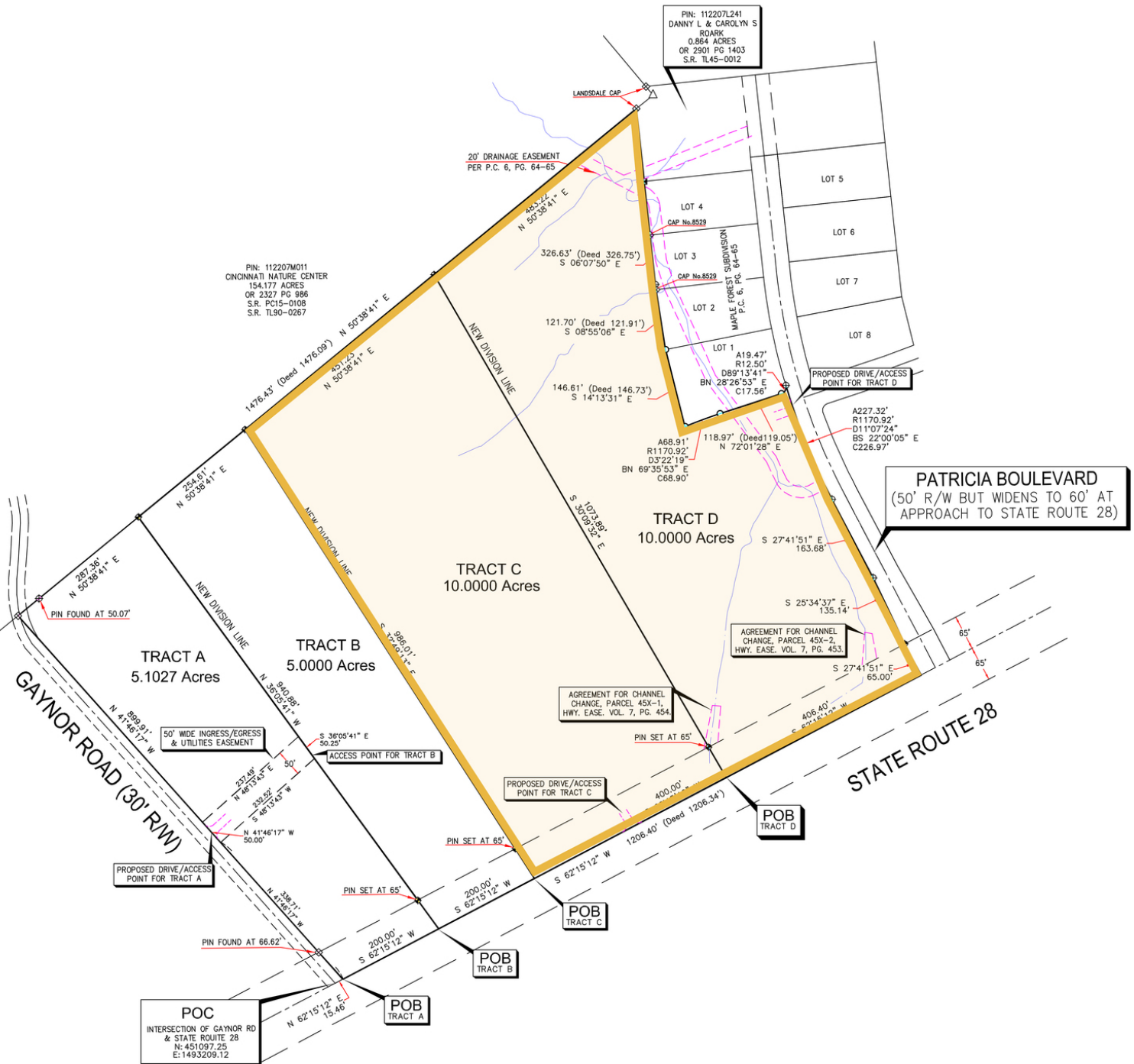
Land | 20 Acres

- 20 Acres - Divisible - B2
- Access to All Utilities
- Up to 800+ feet of frontage on both parcels
- Goshen Township - Clermont County
- Owner to Clear Trees
- B-2 Zoning: All Retail, Office, Hospitals
- Automotive, Nurseries/Greenhouses,
- Schools, Skilled Nursing Facilities, & more.
- Call Agent for Pricing
- Zoned General Business



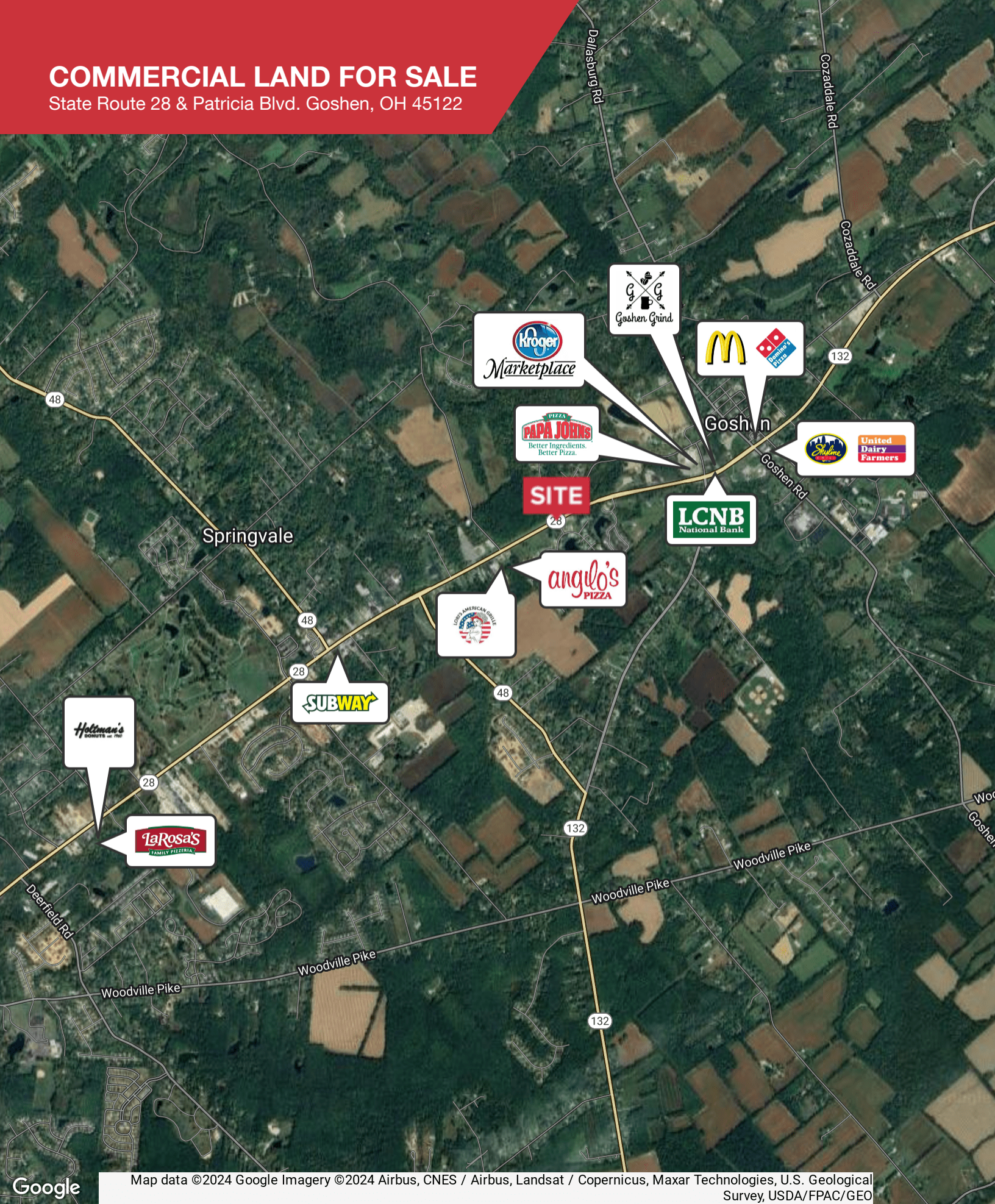
COMMERCIAL LAND FOR SALE

State Route 28 & Patricia Blvd. Goshen, OH 45122



COMMERCIAL LAND FOR SALE

State Route 28 & Patricia Blvd. Goshen, OH 45122



Google Map data ©2024 Google Imagery ©2024 Airbus, CNES / Airbus, Landsat / Copernicus, Maxar Technologies, U.S. Geological Survey, USDA/FPAC/GEO

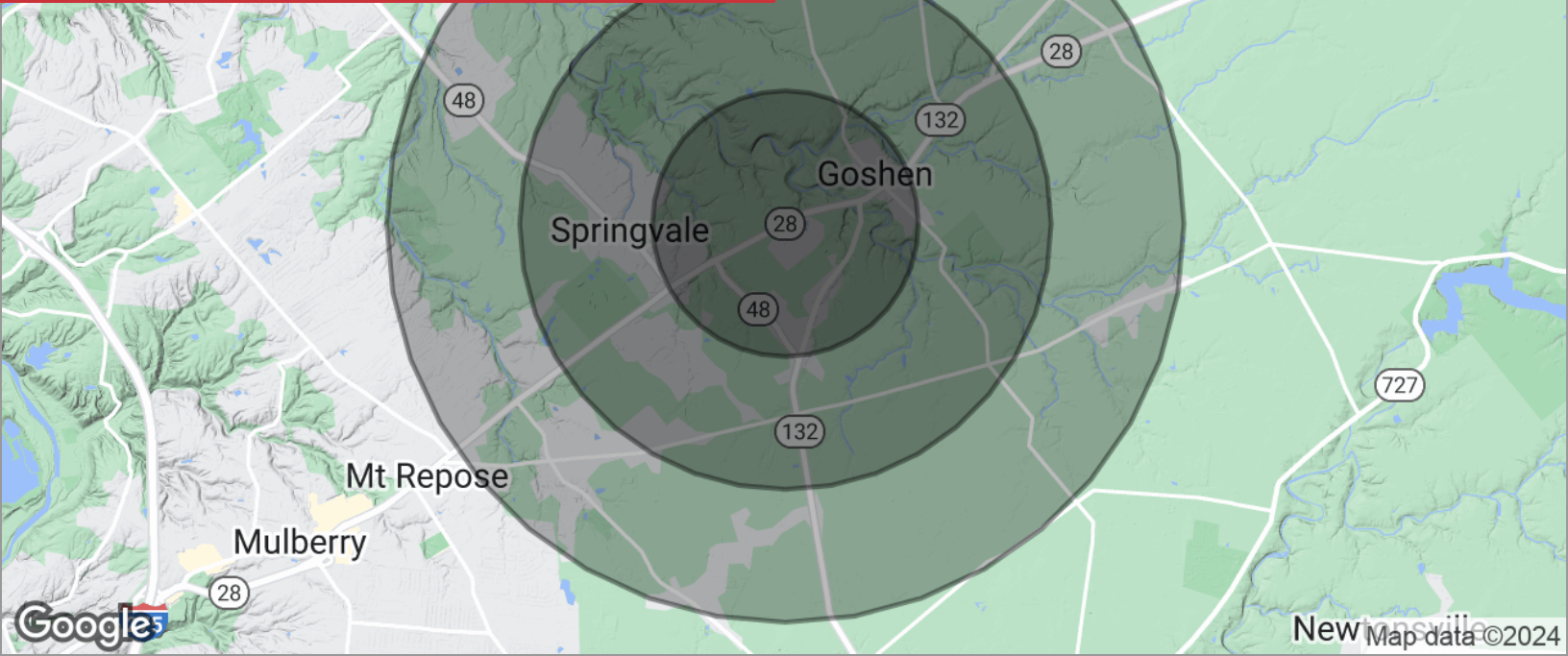
David Metz
+1 513 322 6302
dmetz@bergman-group.com

No Warranty Or Representation, Express Or Implied, Is Made As To The Accuracy Of The Information Contained Herein, And The Same Is Submitted Subject To Errors, Omissions, Change Of Price, Rental Or Other Conditions, Prior Sale, Lease Or Financing, Or Withdrawal Without Notice, And Of Any Special Listing Conditions Imposed By Our Principals No Warranties Or Representations Are Made As To The Condition Of The Property Or Any Hazards Contained Therein Are Any To Be Implied.



COMMERCIAL LAND FOR SALE

State Route 28 & Patricia Blvd. Goshen, OH 45122



POPULATION

	1 MILE	2 MILES	3 MILES
Total population	2,493	9,036	17,646
Median age	34.1	36.4	38.1
Median age (male)	29.5	35.8	38.3
Median age (Female)	36.2	37.6	38.9

HOUSEHOLDS & INCOME

	1 MILE	2 MILES	3 MILES
Total households	1,016	3,357	6,735
# of persons per HH	2.5	2.7	2.6
Average HH income	\$47,292	\$63,862	\$78,942
Average house value	\$91,259	\$128,874	\$164,773

* Demographic data derived from 2020 ACS - US Census