

2nd Generation Restaurant

DEMETREE
GLOBAL

FOR LEASE | RESTAURANT



12103 COLLEGIATE WAY, ORLANDO, FL 32817

This 5,494 SF second-generation restaurant space sits in a prime location within The Paseo at Collegiate Village, a 63-acre mixed-use community directly across from UCF, the second-largest university in the U.S. With easy access and ample parking, the site benefits from a massive built-in customer base of nearly 70,000 students and 13,000 faculty, plus thousands of nearby office and residential units.

PROPERTY HIGHLIGHTS:

- 5,494 SF second-generation restaurant space.
- 1.35 acres with 92 parking spaces plus cross-parking available throughout the development.
- Covered outdoor patio and seating area with a convenient bar pass-through window for quick service.
- Prime location at the SW quadrant of Alafaya Trail (SR 434) and University Blvd, directly across from the main entrance to UCF.
- UCF is the second-largest university in the U.S. by enrollment, with 70,000 students and 13,000 faculty.
- Part of The Paseo at Collegiate Village (The Paseo), a 63-acre mixed-use development featuring two newly constructed buildings and plans to redevelop the existing retail center.
- Within one mile of more than 4 million SF of office and office/flex space, plus 4,200 apartment units.
- 1,600+ new student beds on site.

2024 DEMOGRAPHICS	1 MILE	3 MILES	5 MILES
Population	20,797	106,016	240,675
Total Daytime Population	56,300	152,626	258,707
Median Age	20.0	29.0	33.0
Average HH Income	\$65,040	\$93,535	\$101,223



69,000+ UCF Students

2022 total



59,803 Employees

in 3 miles



\$93,535 HH Income

in 3 miles

Contact us now for more information

RUSTY STOECKEL
BROKER/ASSOCIATE
(407) 440-5424
rusty@dresi.com

LUC PICOTTE
SALES ASSOCIATE
(425) 275-3346
lpicotte@demetreeglobal.com

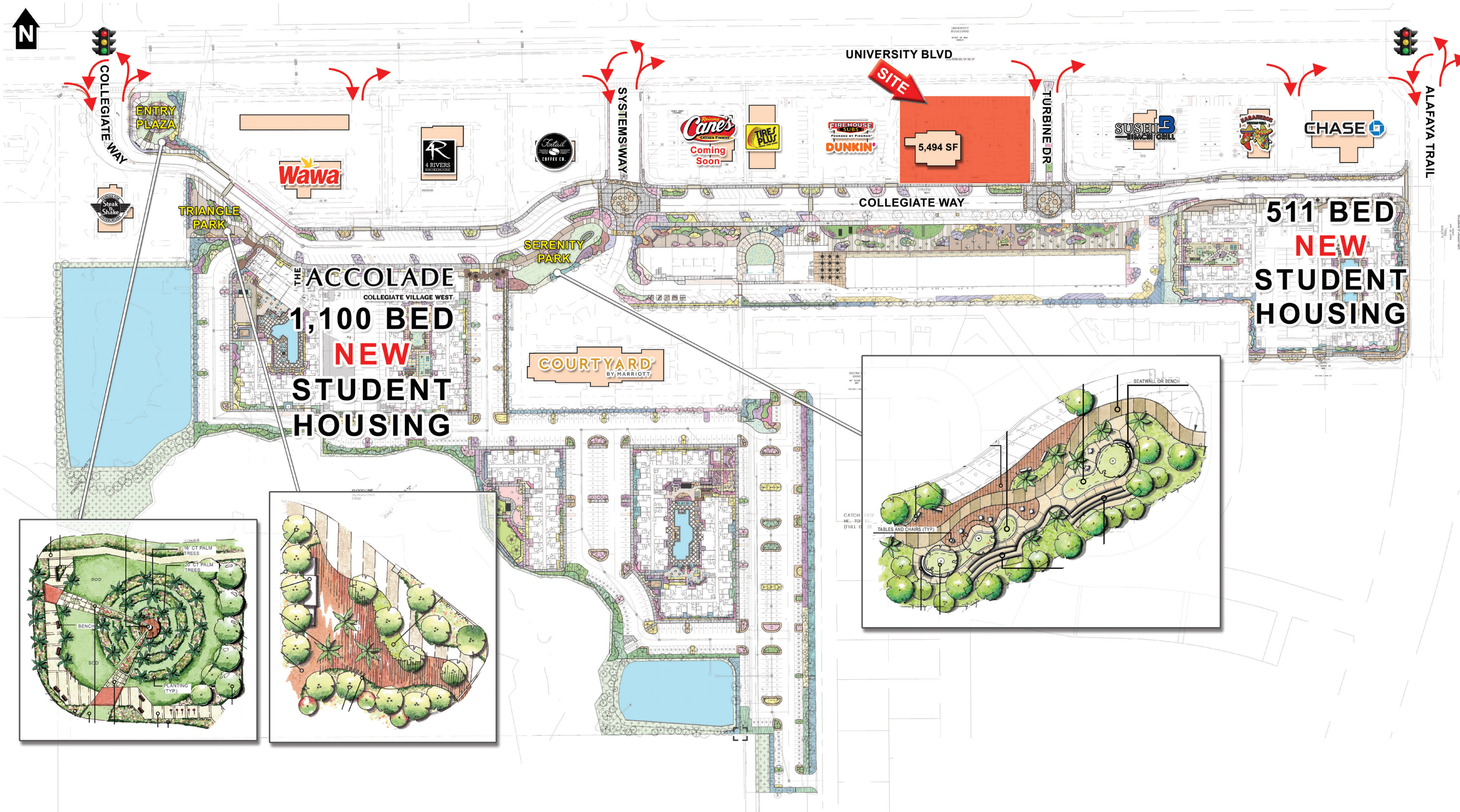
Demetree Global
941 W. Morse Blvd, Suite 315 | Winter Park, FL 32789
DemetreeGlobal.com

No warranty or representation, expressed or implied, is made as to the accuracy of the information contained herein, and same is submitted subject errors, omissions, change of price, rental or other conditions, withdrawal without notice, and to any special listing and conditions imposed by our principals.

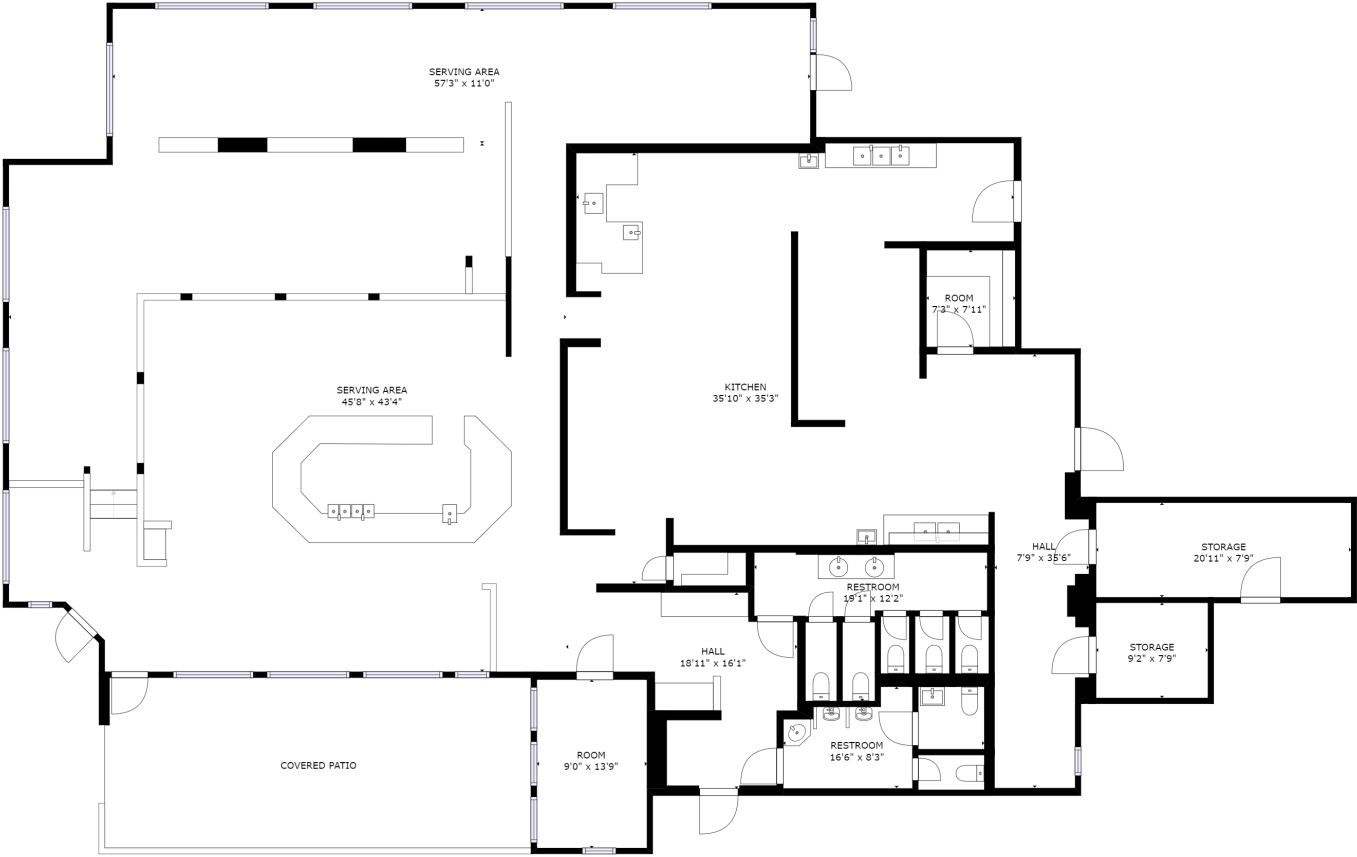
Trade Area Aerial & Closer View



Overall Site Plan



Floor Plan



GROSS INTERNAL AREA
FLOOR 1: 5008 sq. ft, EXCLUDED AREAS:
PATIO: 486 sq. ft
TOTAL: 5008 sq. ft

SIZES AND DIMENSIONS ARE APPROXIMATE, ACTUAL MAY VARY.

FLOOR 1



Photos



Contact us now for more information

RUSTY STOECKEL
BROKER/ASSOCIATE
(407) 440-5424
rusty@dresi.com

LUC PICOTTE
SALES ASSOCIATE
(425) 275-3346
lpicotte@demetreeglobal.com

Demetree Global
941 W. Morse Blvd, Suite 315 | Winter Park, FL 32789
DemetreeGlobal.com

No warranty or representation, express or implied, is made as to the accuracy of the information contained herein, and same is submitted subject errors, omissions, change of price, rental or other conditions, withdrawal without notice, and to any special listing and conditions imposed by our principals.