

# 6790 Sims Dr

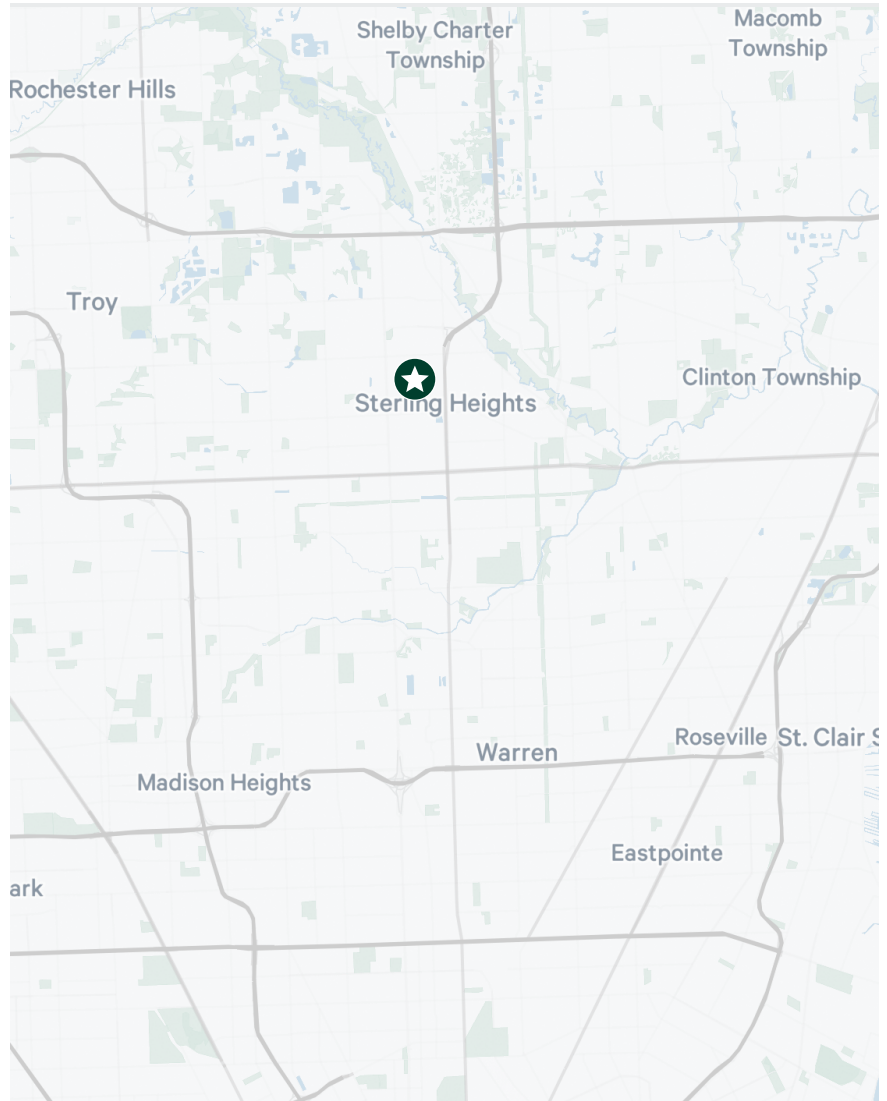
Sterling Heights, MI

37,929 Square Foot Building Available For Lease



# Property Overview

- + ± 37,929 Square Foot Building
  - ± 5,774 SF First Floor Office
  - ± 5,397 SF Second Floor Office
  - ± 26,758 SF Shop/Warehouse
- + One Truckwell
- + Three Grade Level Doors
- + 19' Clear Height
- + Power: Heavy 3Phase/480 Volt (TBV)
- + Zoned M2
- + Fenced and Gated
- + Landlord Will Remodel To Suit
- + Lease Rate: \$7.75/SF NNN



## Contact Us

### Joe Kemp

Vice President  
+1 248 936 6892  
joe.kemp@cbre.com

### Matt Osiecki

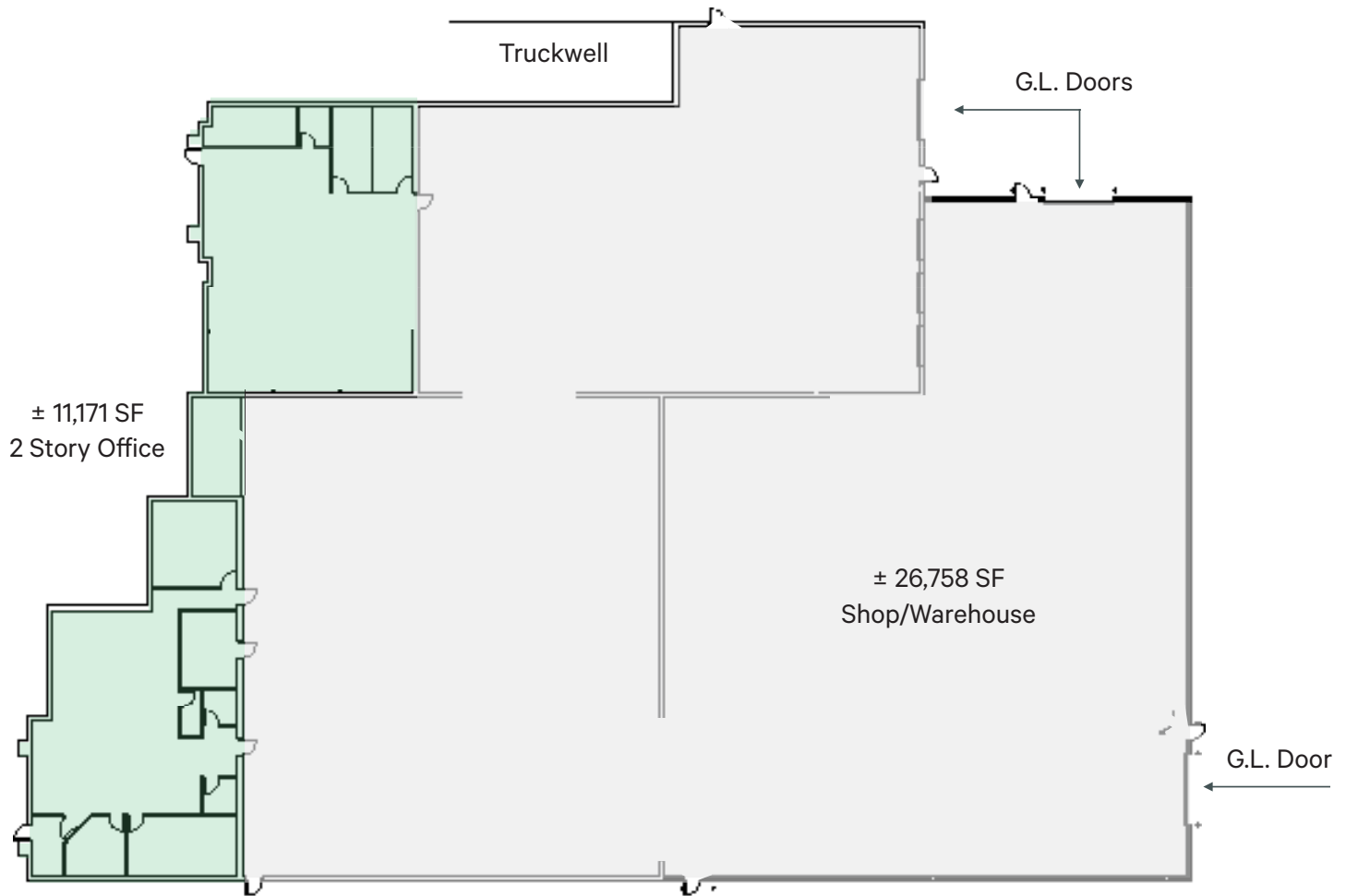
First Vice President  
+1 248 351 2079  
matt.osiecki@cbre.com

### Jared Sherman

Associate  
+1 248 978 6593  
jared.sherman@cbre.com

© 2025 CBRE, Inc. All rights reserved. This information has been obtained from sources believed reliable but has not been verified for accuracy or completeness. CBRE, Inc. makes no guarantee, representation or warranty and accepts no responsibility or liability as to the accuracy, completeness, or reliability of the information contained herein. You should conduct a careful, independent investigation of the property and verify all information. Any reliance on this information is solely at your own risk.

# Floor Plan (First Floor)



## Contact Us

**Joe Kemp**

Vice President  
+1 248 936 6892  
joe.kemp@cbre.com

**Matt Osiecki**

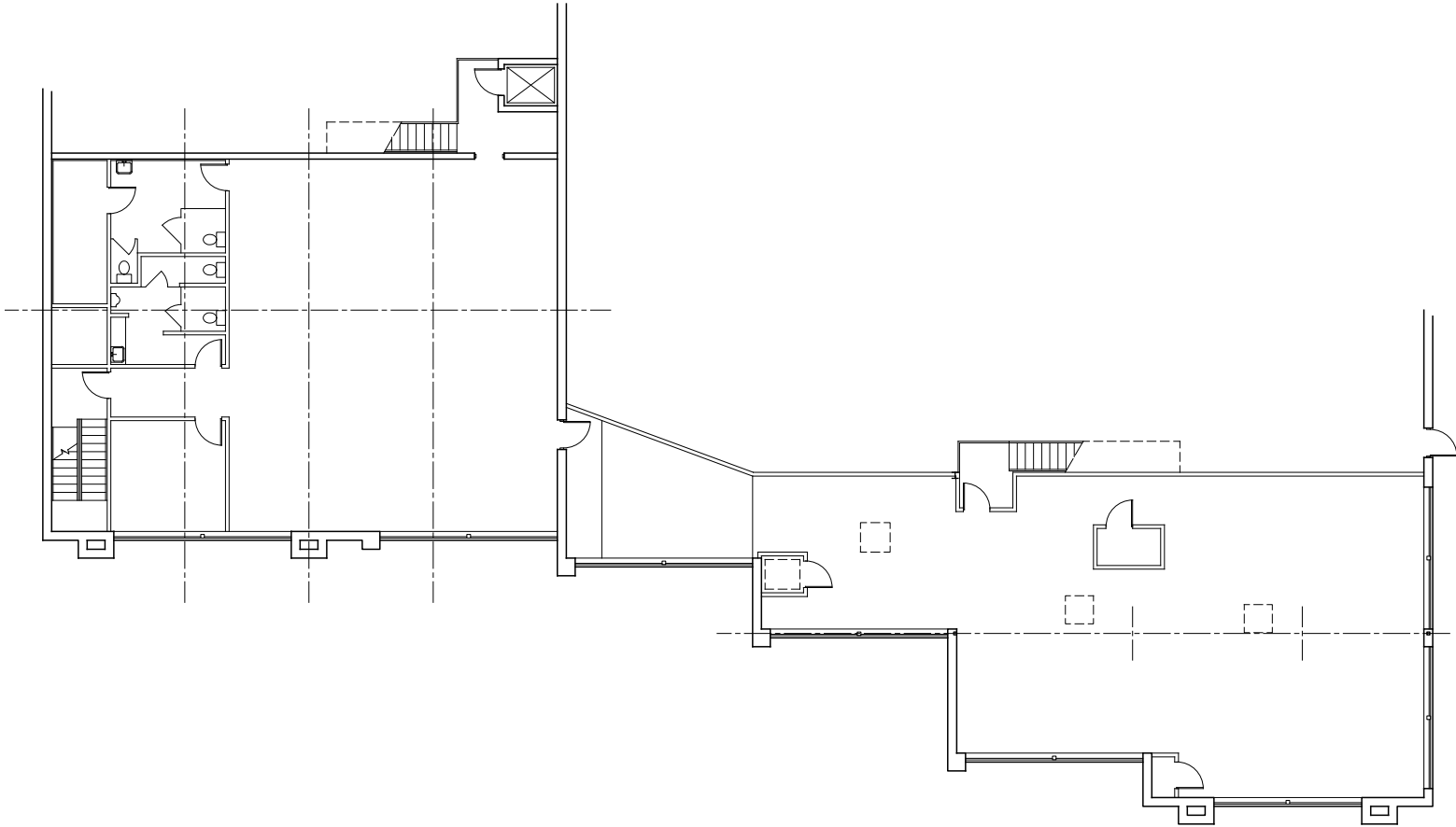
First Vice President  
+1 248 351 2079  
matt.osiecki@cbre.com

**Jared Sherman**

Associate  
+1 248 978 6593  
jared.sherman@cbre.com

© 2025 CBRE, Inc. All rights reserved. This information has been obtained from sources believed reliable but has not been verified for accuracy or completeness. CBRE, Inc. makes no guarantee, representation or warranty and accepts no responsibility or liability as to the accuracy, completeness, or reliability of the information contained herein. You should conduct a careful, independent investigation of the property and verify all information. Any reliance on this information is solely at your own risk.

# Floor Plan (Second Floor Office)



## Contact Us

### Joe Kemp

Vice President  
+1 248 936 6892  
joe.kemp@cbre.com

### Matt Osiecki

First Vice President  
+1 248 351 2079  
matt.osiecki@cbre.com

### Jared Sherman

Associate  
+1 248 978 6593  
jared.sherman@cbre.com

© 2025 CBRE, Inc. All rights reserved. This information has been obtained from sources believed reliable but has not been verified for accuracy or completeness. CBRE, Inc. makes no guarantee, representation or warranty and accepts no responsibility or liability as to the accuracy, completeness, or reliability of the information contained herein. You should conduct a careful, independent investigation of the property and verify all information. Any reliance on this information is solely at your own risk.