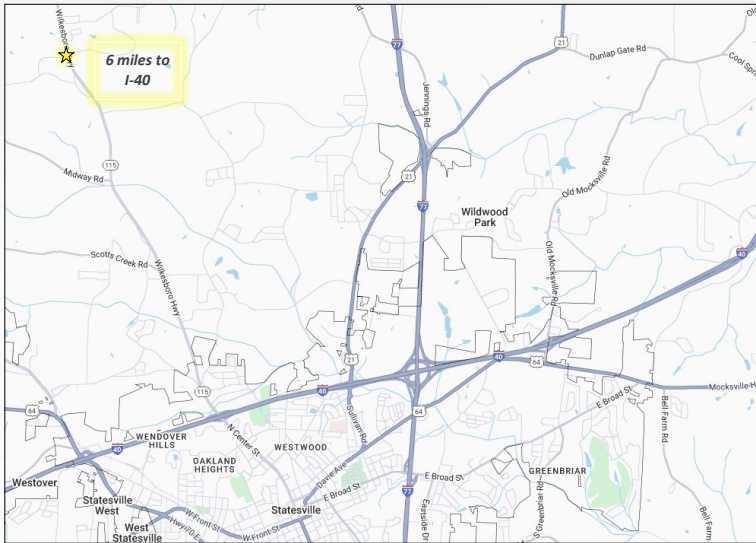


2997 Wilkesboro Hwy

Statesville, NC 28625



For Sale \$999,000

+/- 2 Acres

Approximately 2 acres zoned Iredell County General Business along Hwy 115. The building is a total of +/-11,000 SF with fenced storage area (est. 3/4 acre). Property has a 2 bay front warehouse/office, with a 5 bay 12x14 door warehouse in the rear. Great location for warehouse, auto garage, storage, or investment in the northern Statesville area.

Eric Thompson

Broker

704-902-2757

ethompson@equitycp.com



Equity Commercial Properties

2997 Wilkesboro Hwy

Statesville, NC 28625

EquityCP.com



Front Entrance



2-Bay Front Warehouse



Office / Upstairs Entrance



5-Bay Warehouse Fenced Storage Area

2997 Wilkesboro Hwy

Statesville, NC 28625

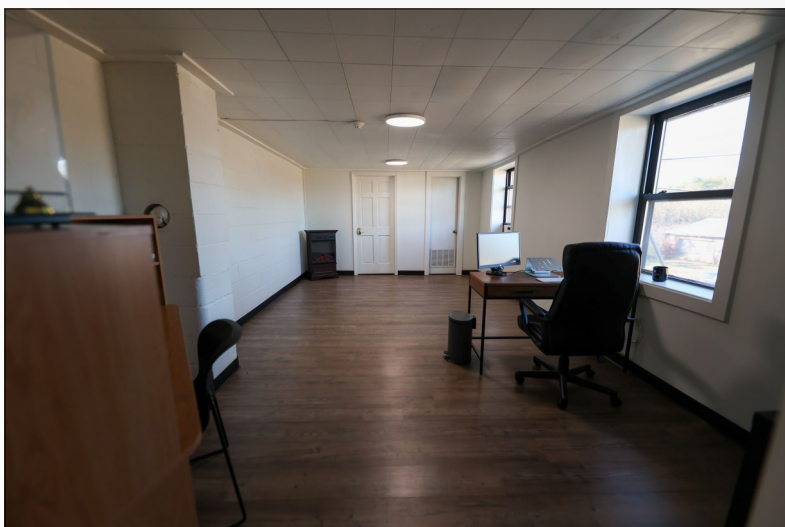
EquityCP.com



Storefront Entrance



Storage Area



Upstairs Office Area



Main Office

2997 Wilkesboro Hwy

Statesville, NC 28625

EquityCP.com



Property Details

Price:	\$999,000	Lot Size:	+/- 2 acres
PIN:	4727560709.000	Building SF:	+/- 11,000 SF
Proximity to I-40:	6 miles	Utilities:	Iredell Water
Purposed Use:	Storage / Warehouse Investment	Zoning:	General Business

