

UNIVERSITY MEDICAL PARK

101 EAST W.T. HARRIS BOULEVARD
CHARLOTTE | NORTH CAROLINA



WILL ROBERTSON
704-996-5824
will@flagshipHP.com

GREG MCINTOSH
704-562-2153
greg@flagshipHP.com

FOR LEASE

PROPERTY OVERVIEW

PROPERTY SUMMARY

University Medical Park is composed of five multi-tenant buildings. Located at 101 E. W.T. Harris Boulevard, this medical office park falls within in the heart of the University area of Charlotte.

The site's close proximity to the Atrium Health University City campus, ample parking, and a diverse tenant mix make this property a first-rate office opportunity for a variety of medical practices.



TOTAL BUILDING AREA:
± 250,000 SF



TOTAL AVAILABILITY:
± 25,122 RSF



LEASE RATE:
\$22.50/SF



LEASE TYPE:
NNN



YEAR BUILT:
1983

AVAILABLE SUITES

BUILDING 1000:

Suite 1212 - 2,730 SF
Suite 1216 - 1,847 SF

BUILDING 2000:

Suite 2223 - 1,680 SF

BUILDING 3000:

Suite 3111 - 5,209 SF

BUILDING 4000:

Suite 4101 - 3,436 SF

BUILDING 5000

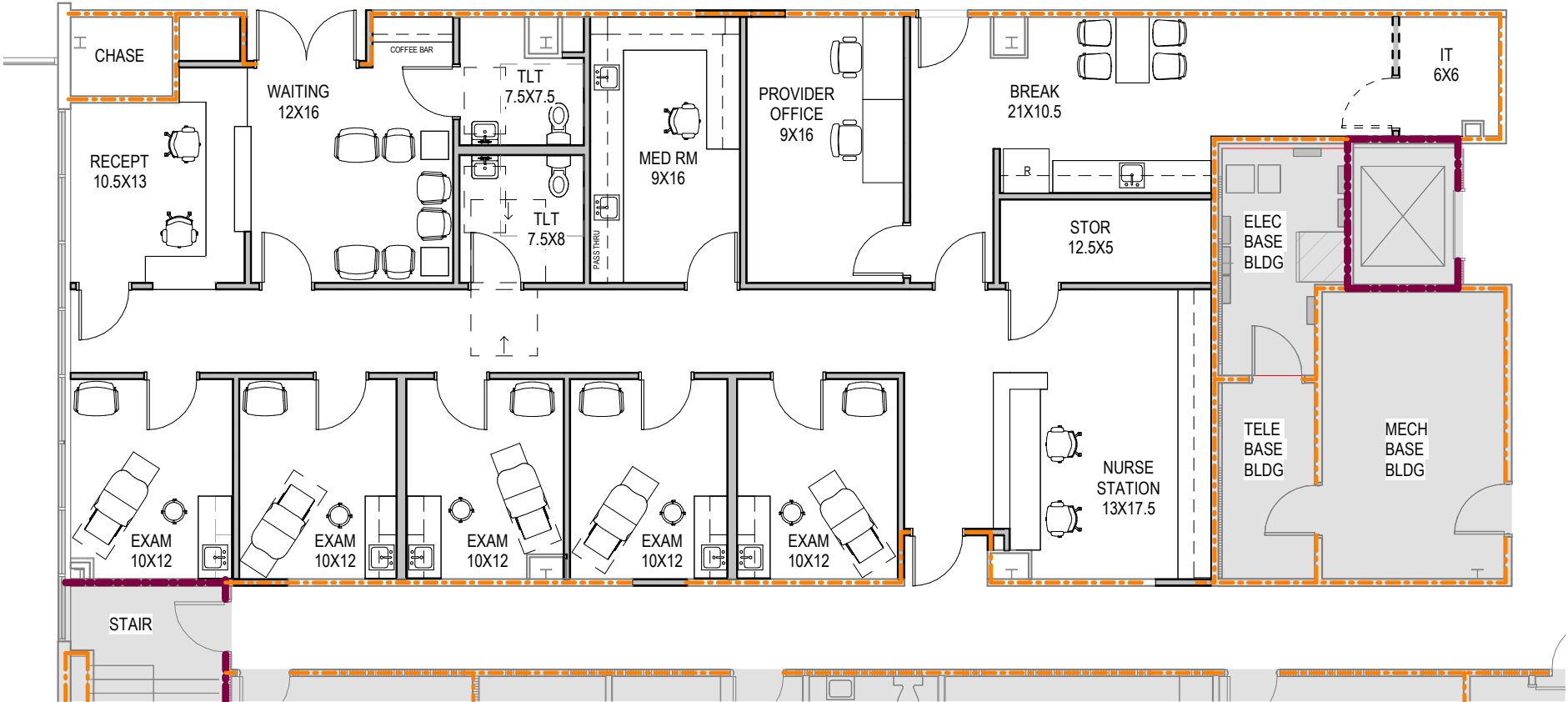
Suite 5106 - 1,565 SF
Suite 5304 - 6,009 SF
Suite 5402 - 2,646 SF

CONTACT

WILL ROBERTSON
704-996-5824
will@FlagshipHP.com

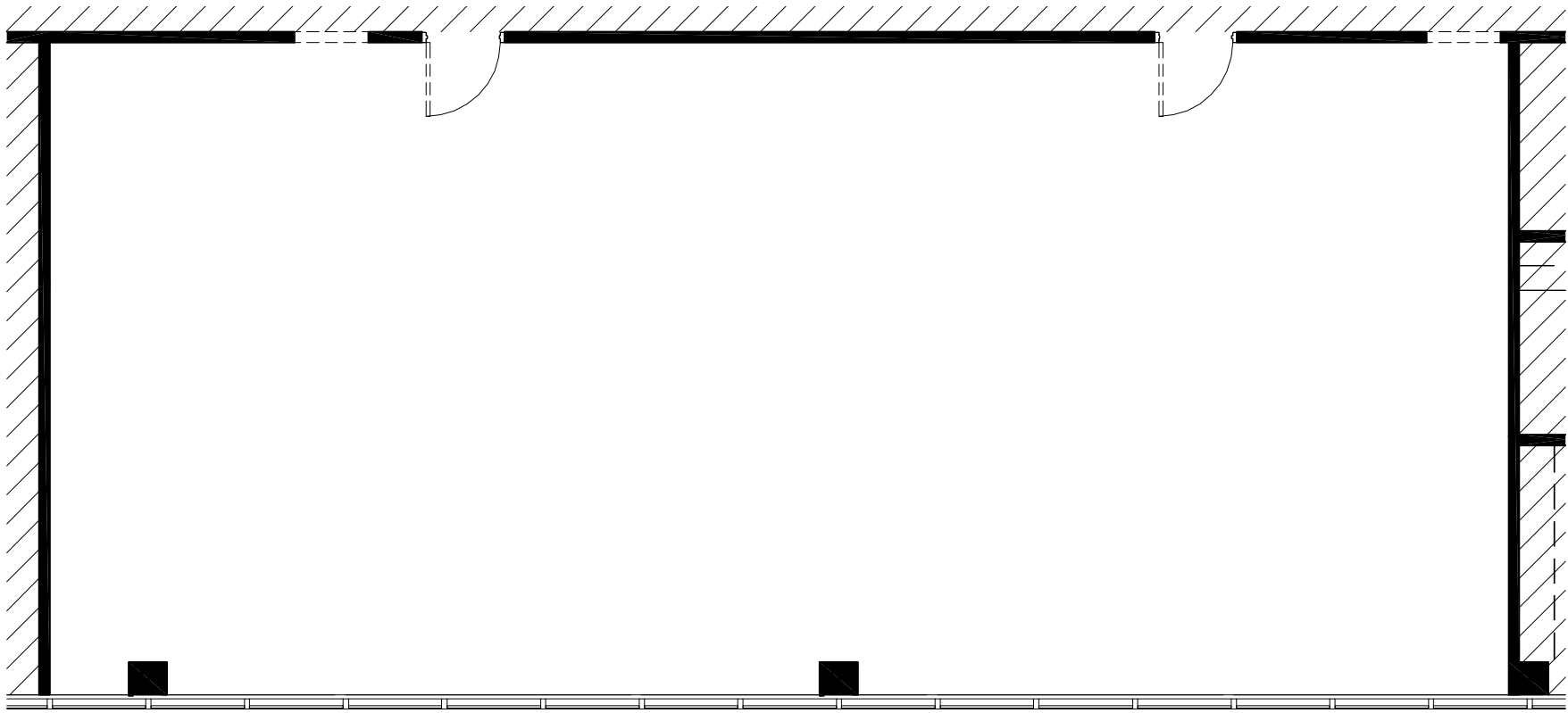
GREG MCINTOSH
704-562-2153
greg@FlagshipHP.com

BUILDING 1000: SUITE 1212



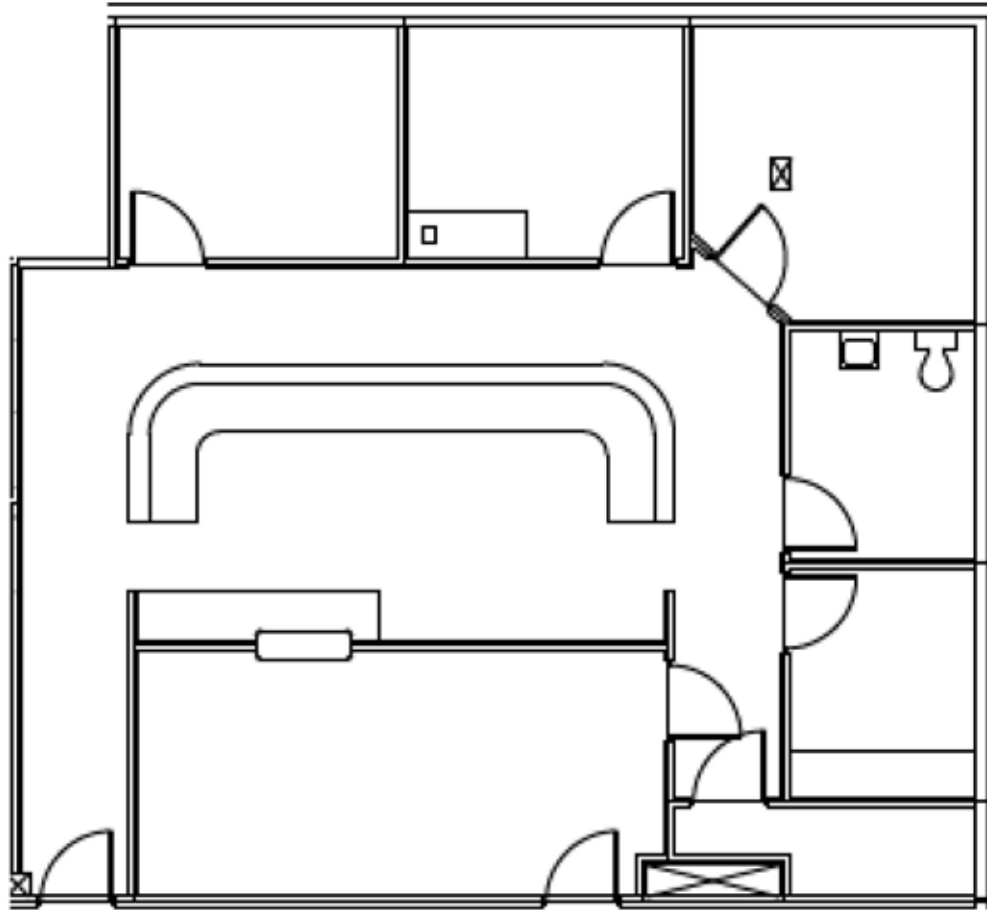
SUITE 1212 - 2,730 SF
Spec Suite

BUILDING 1000: SUITE 1216



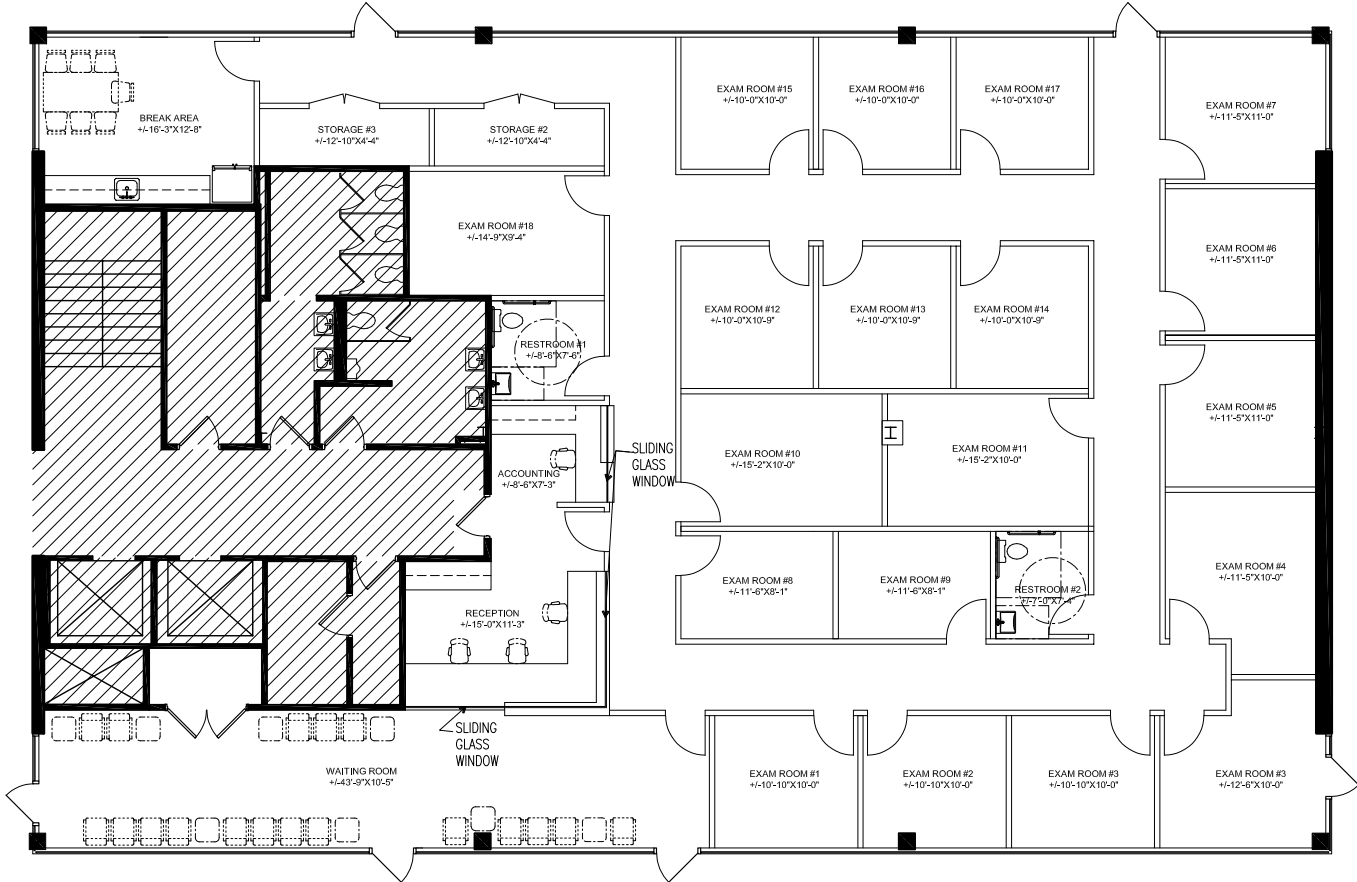
SUITE 1216 - 1,847 SF
Vanilla Box Condition

BUILDING 2000: SUITE 2223



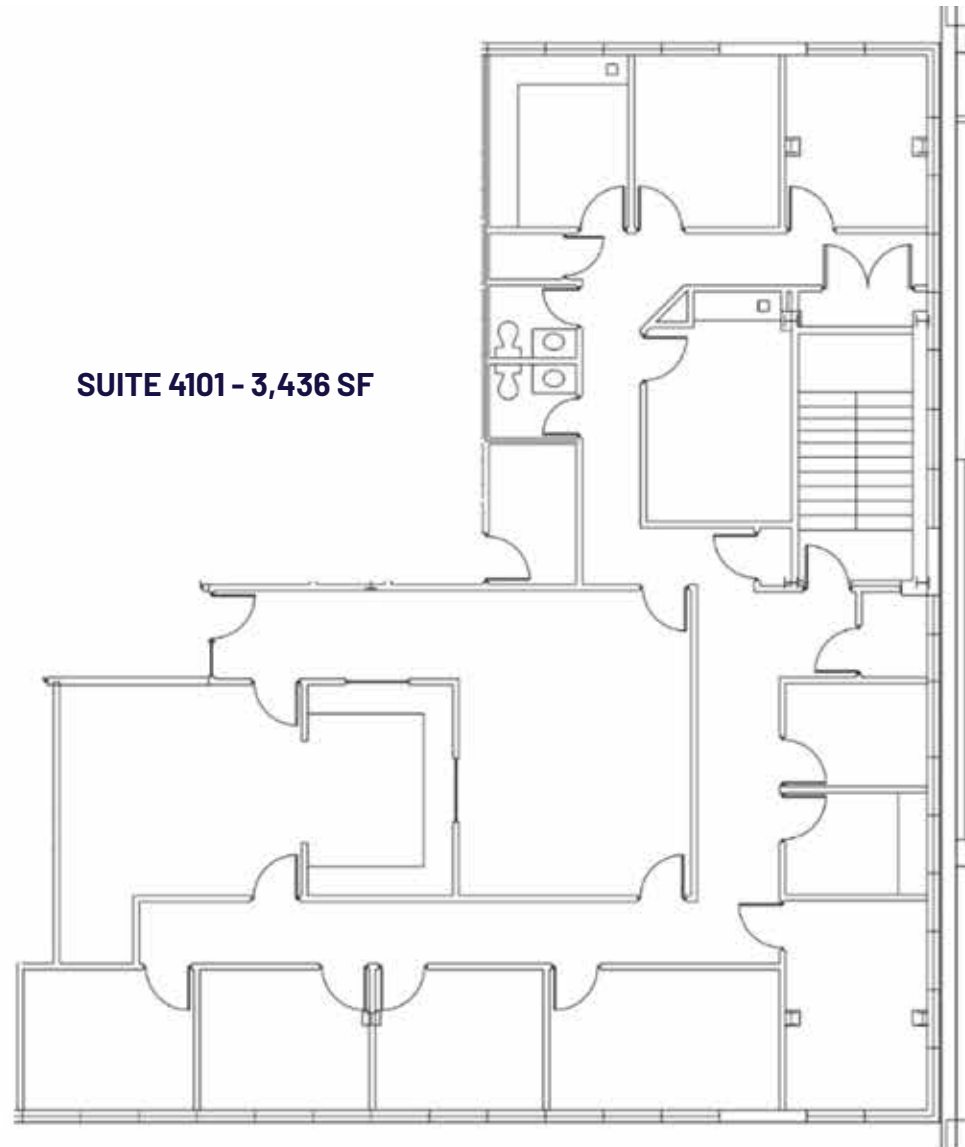
SUITE 2223 - 1,680 SF

BUILDING 3000: SUITE 3111

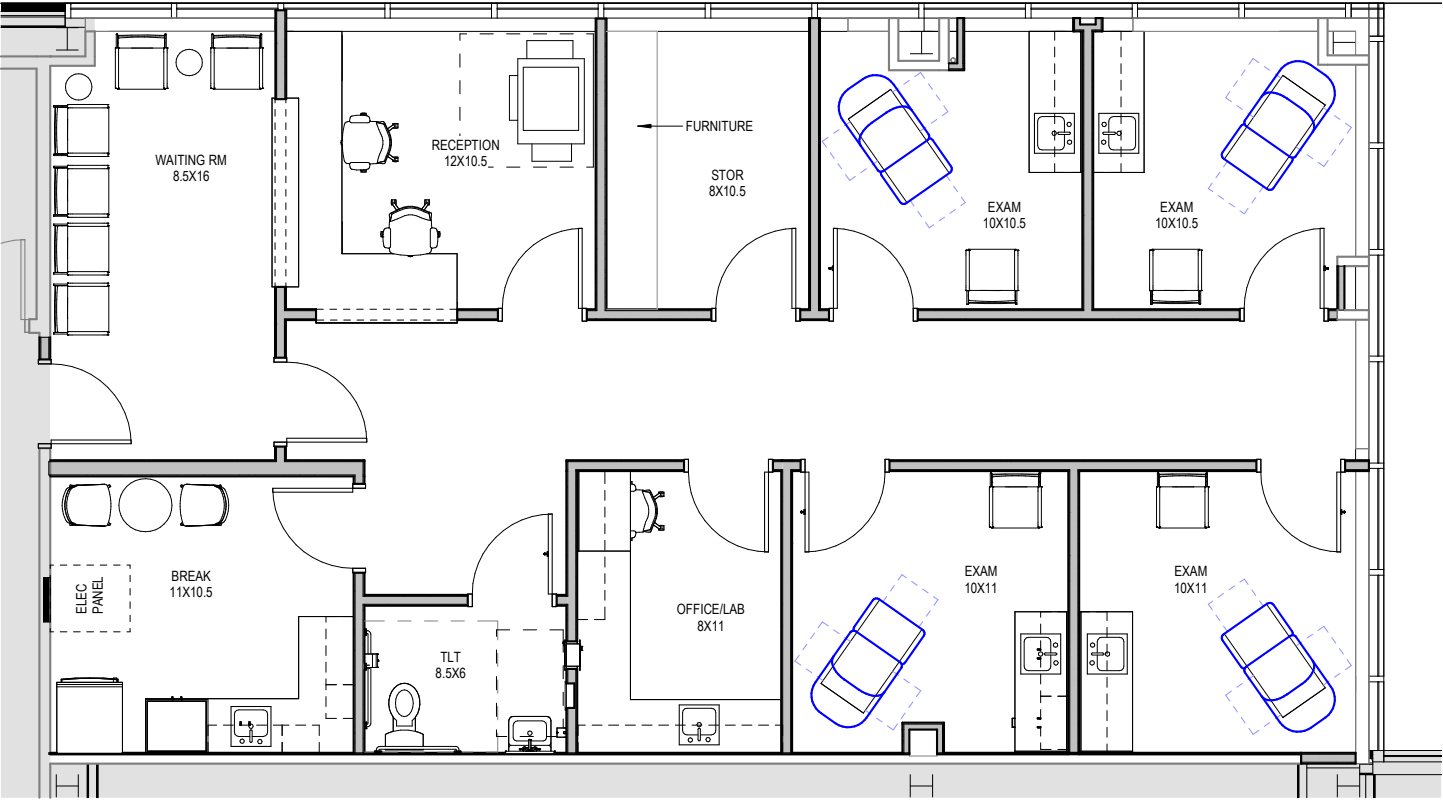


SUITE 3111 - 5,209 SF

BUILDING 4000: SUITE 4101



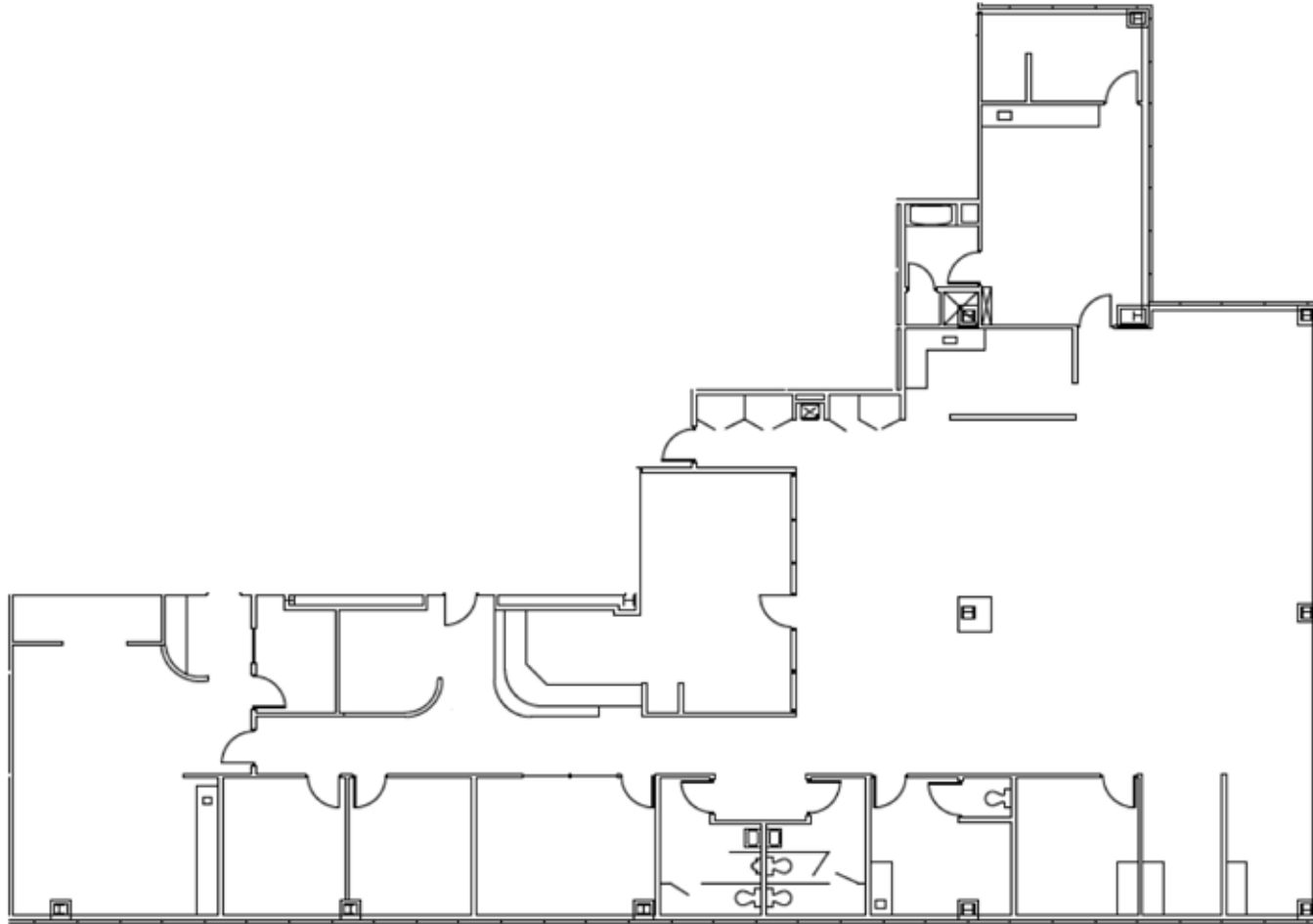
BUILDING 5000: SUITE 5106



SUITE 5106 - 1,565 SF

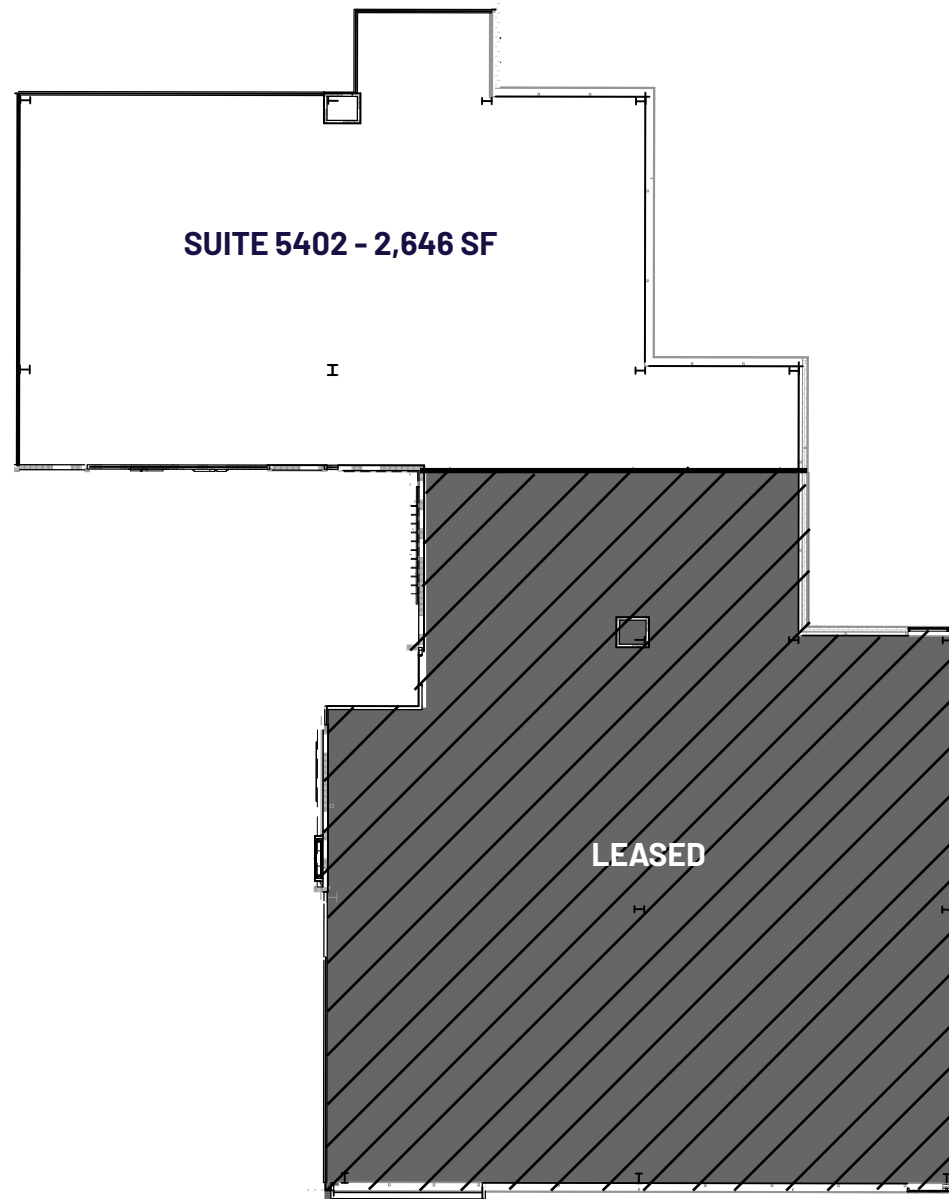
[VIRTUAL TOUR](#)

BUILDING 5000: SUITES 5304



SUITE 5304 - 6,009 SF

BUILDING 5000: SUITE 5402



AREA MAP



Family Dentistry at
Wells Fargo CIC

Sam's Club

The Shoppes at
University Place

Aspen Dental

Atrium Health
University Hospital

University of North
Carolina - Charlotte

University Dental
Associates

101 E. WT Harris Blvd.

Haraz Coffee

Harris Teeter

Home Depot

Walmart

Lowe's

IKEA

Target