

A photograph of the Stoneridge I office building, a modern, multi-story structure with large glass windows and a prominent entrance. The building is surrounded by lush greenery, including tall evergreen trees and flowering shrubs. A paved walkway leads to the entrance, and a parking lot is visible in the foreground. The sky is blue with scattered white clouds.

STONERIDGE I

41000 Woodward Avenue | Bloomfield Hills, MI

**Classic style.
Custom layout.
Convenient access.**

Up to 73,000 RSF Class A Office Space For Lease

CBRE

KOJAIANO



State-of-the-art fitness center featuring Peloton bikes



Computerized entry access for enhanced security

Welcome to Stoneridge I

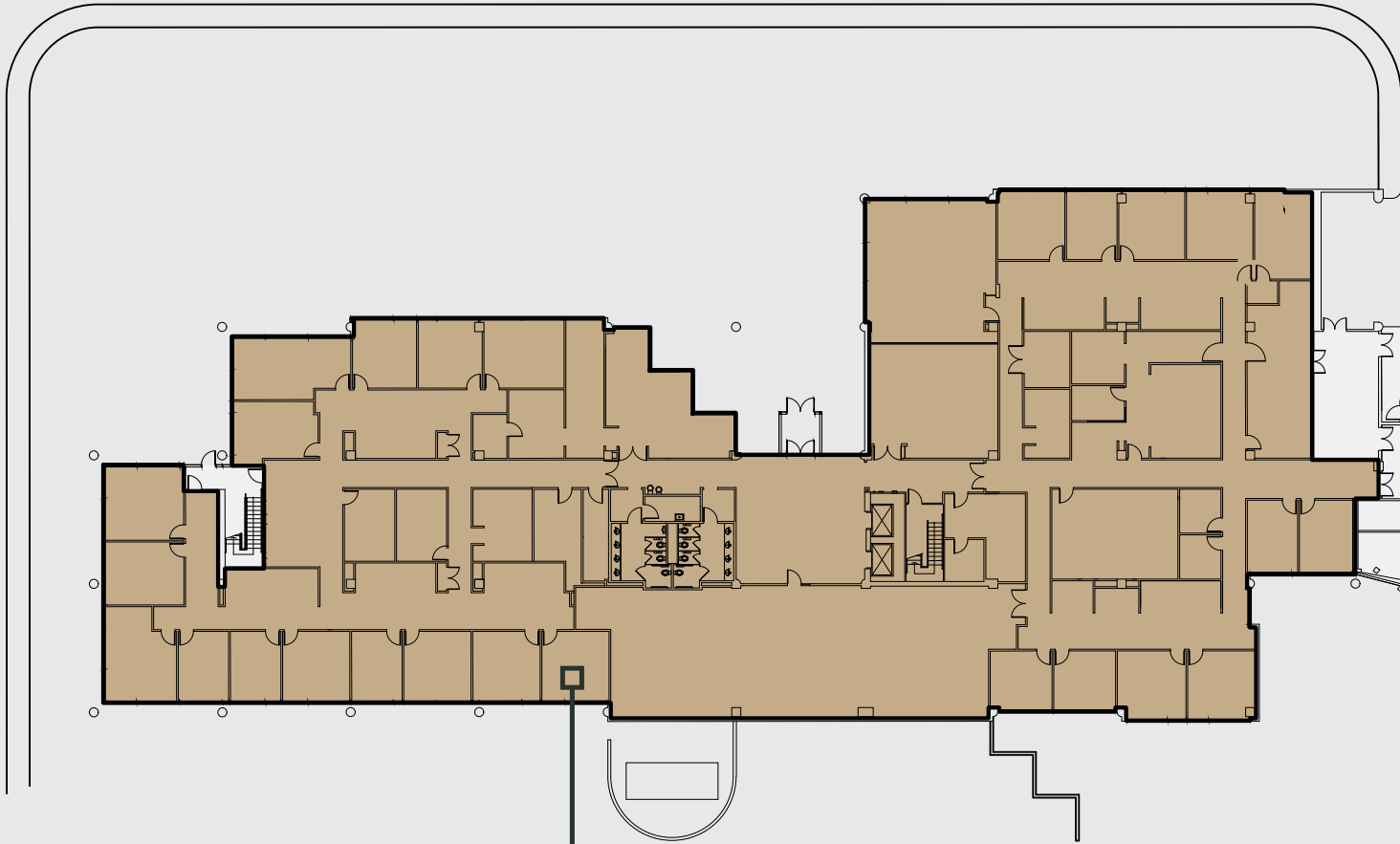


Micro-market with
grab-and-go food service



Abundant well-lit
parking, including an
adjacent multi-level
covered parking deck

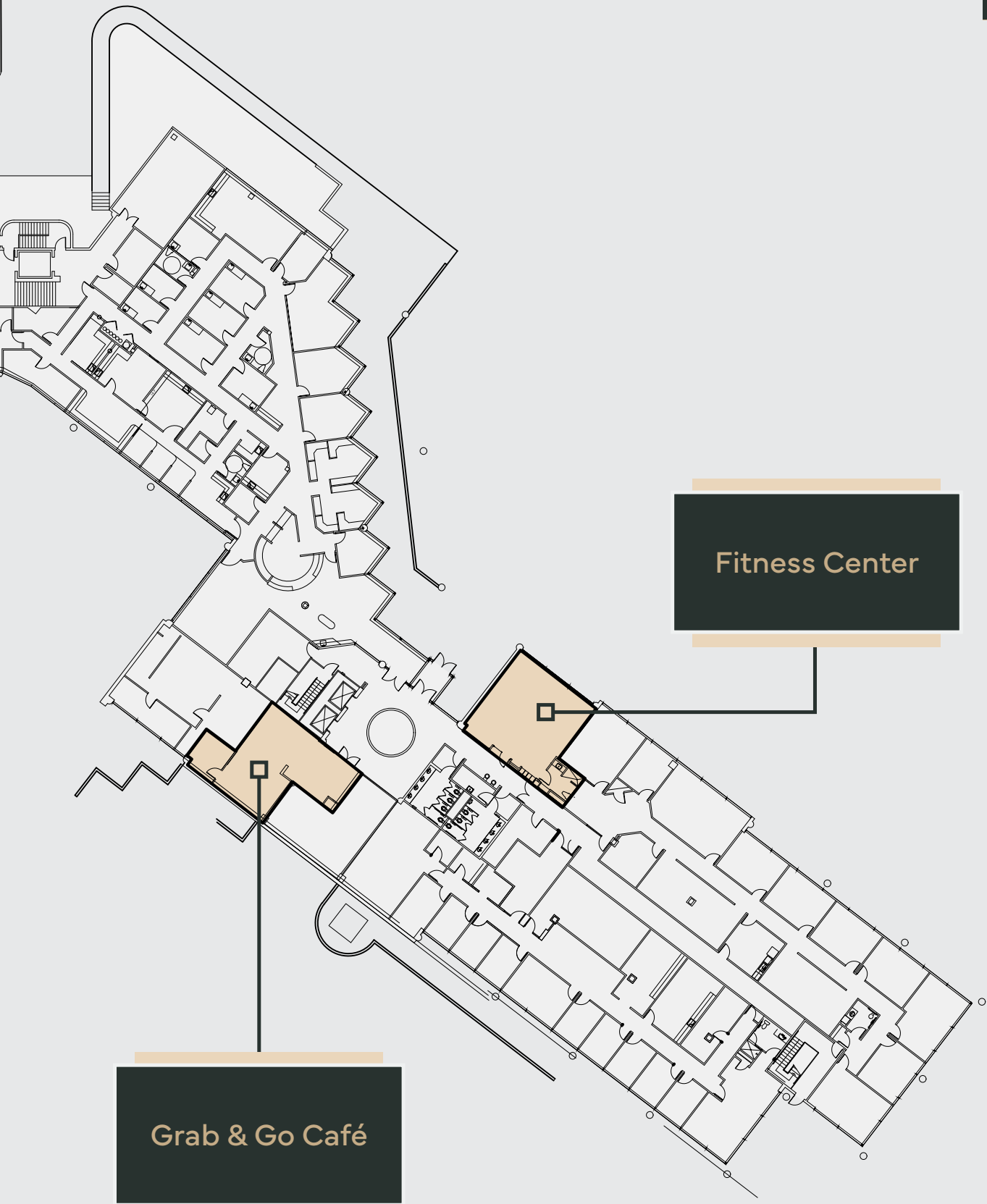
Step into a space that elevates your brand and inspires your team—Stoneridge I is more than an office, it's a statement. Nestled in the serene heart of Bloomfield Hills, this premier address offers the perfect blend of prestige, convenience, and calm, designed for firms that value excellence without compromise.



Suite 100W
22,018 RSF*

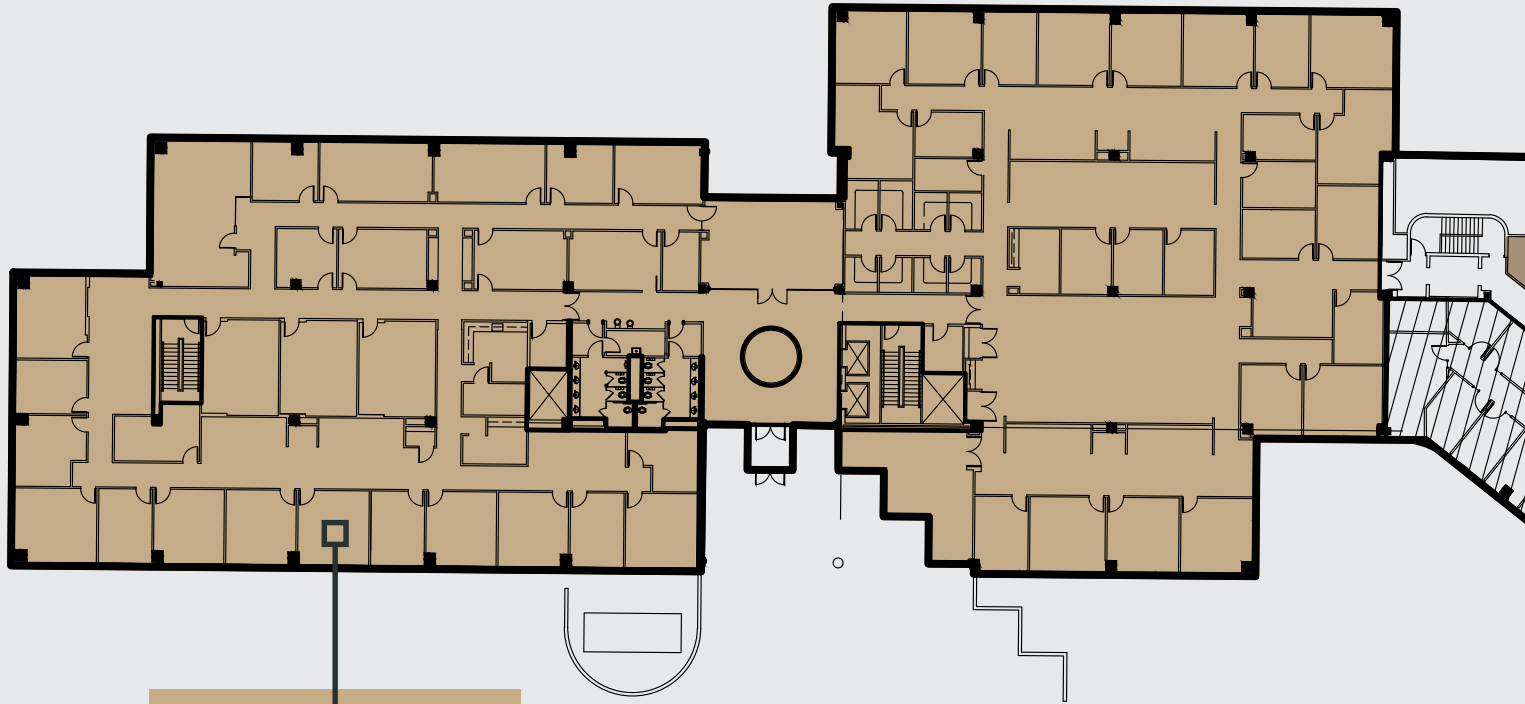
First Floor

*Entire West Building can be leased for 71,551 RSF total



Grab & Go Café

Fitness Center



Suite 200W
24,258 RSF*

Second Floor

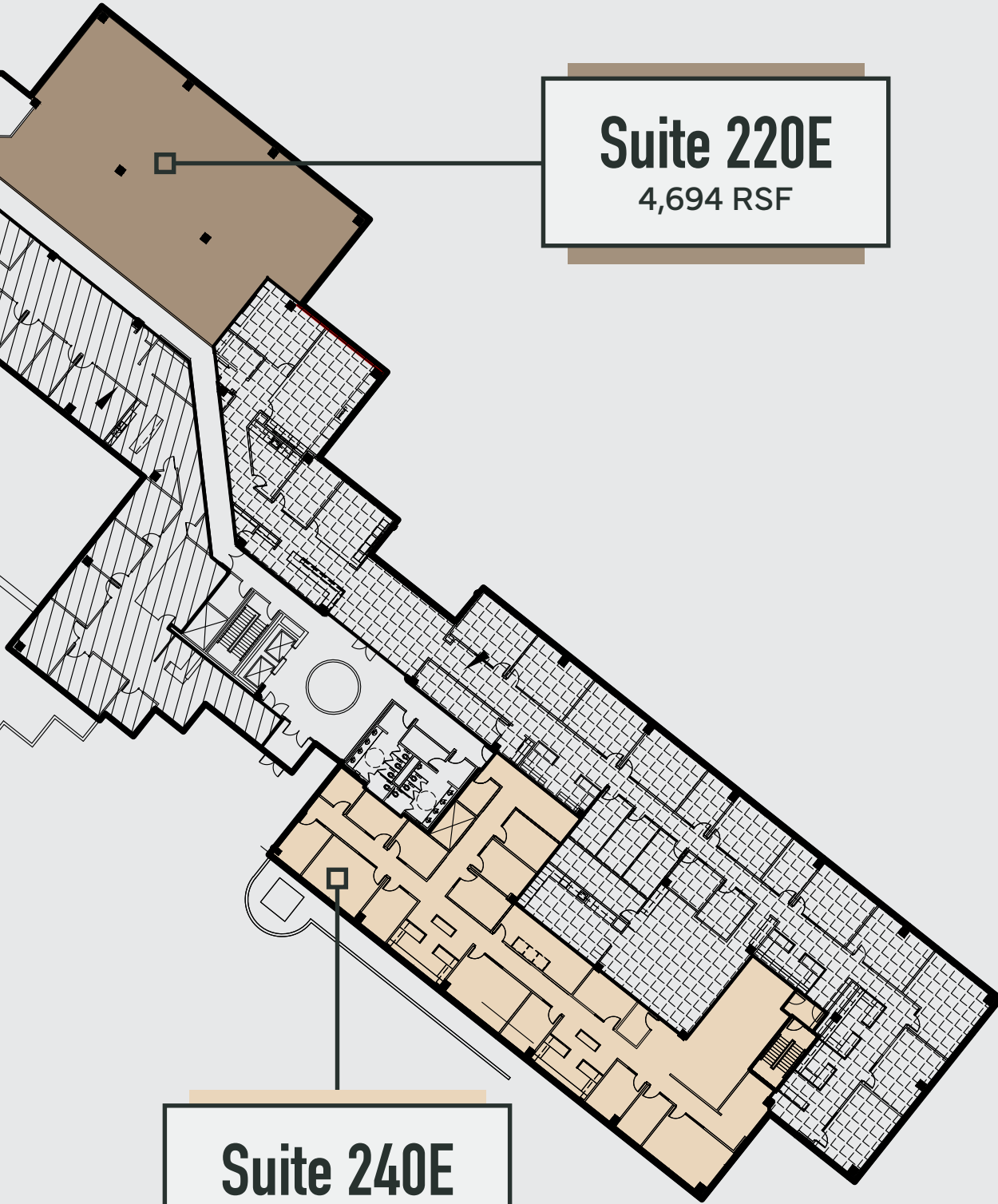
*Entire West Building can be leased for 71,551 RSF total

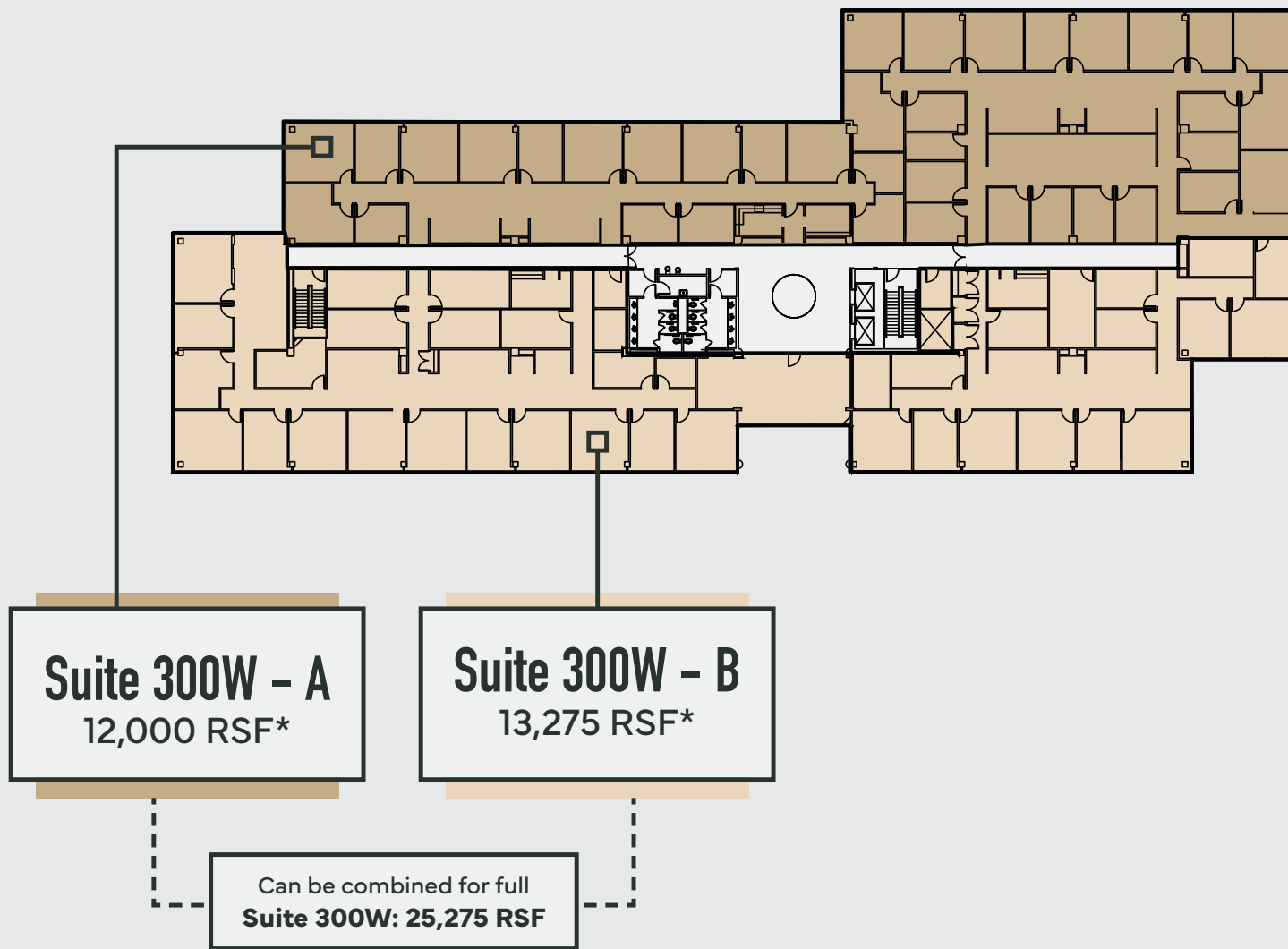
Suite 220E

4,694 RSF

Suite 240E

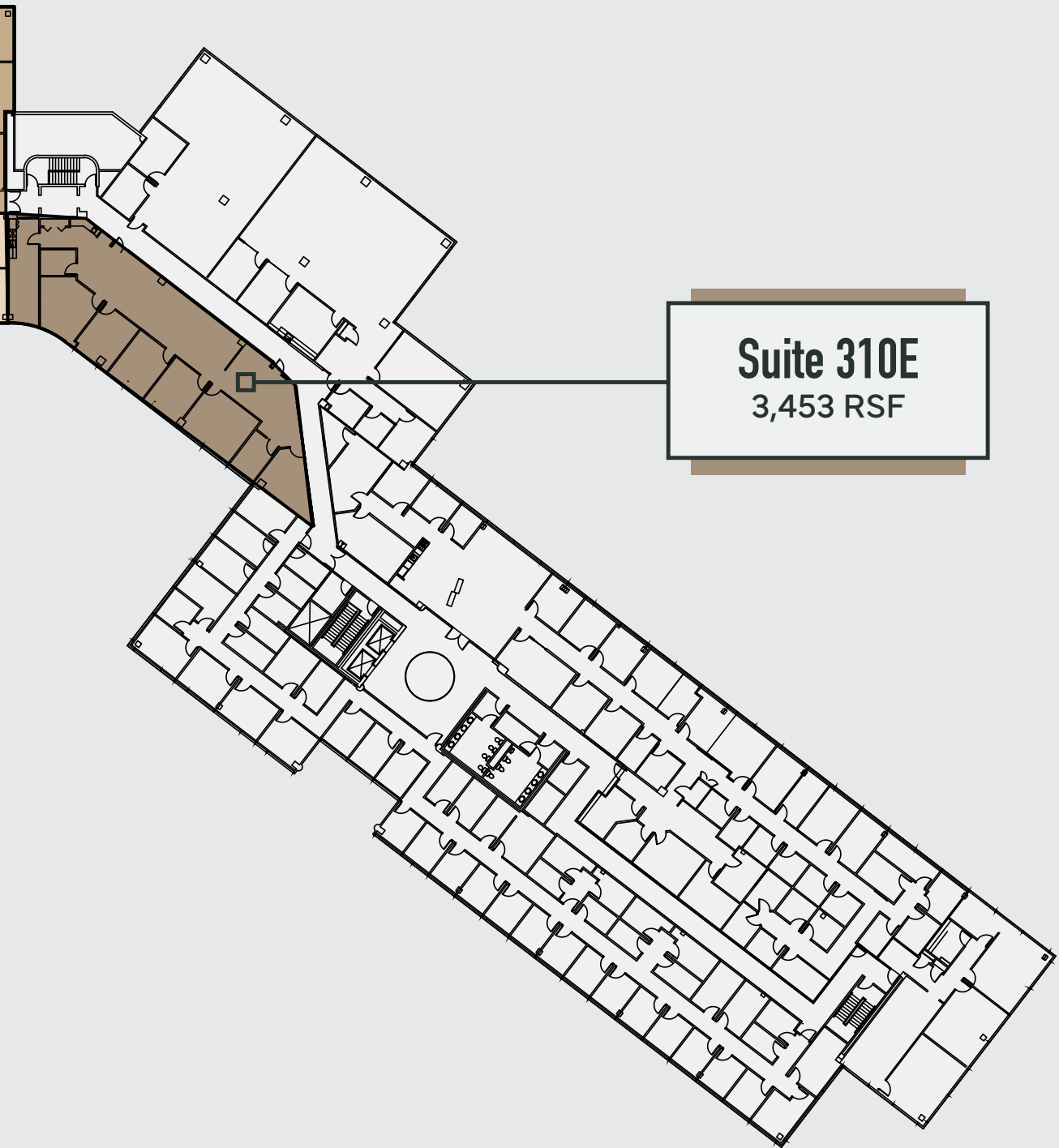
6,176 RSF



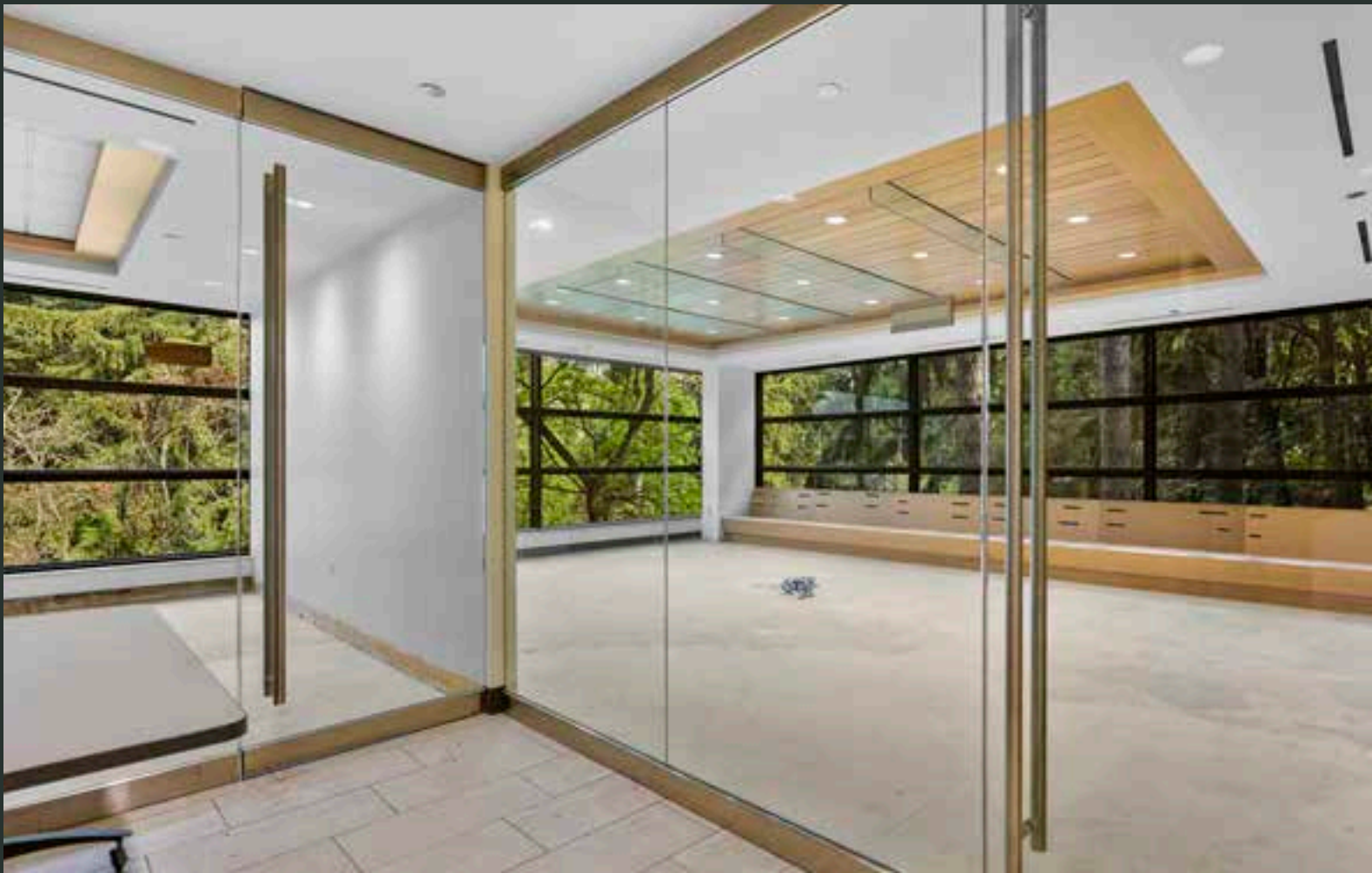


Third Floor

*Entire West Building can be leased for 71,551 RSF total



Suite 310E
3,453 RSF





Furniture Available with Suite



SQUARE LAKE RD



STONERIDGE I

12 Minutes to
TROY

SQUIRREL RD

LONG LAKE RD

Troy

COOLIDGE HWY

WOODWARD AVE

KENSINGTON RD

WATTLES RD

Bloomfield Hills

M1

N ADAMS RD



Somerset
Collection

7 Minutes to
**Downtown
Birmingham**

W BIG BEAVER



Birmingham



MAPLE RD

14 MILE RD



An Unbeatable Location

Strategically positioned at the crossroads of sophistication and accessibility, Stoneridge I offers tenants a prestigious business address with seamless access to the best of metro Detroit. Just minutes from Birmingham's upscale dining and boutique hotels, but without the congestion or retail distractions, and equally close to Troy's corporate conveniences, without the density or commuter traffic. Bloomfield Hills itself provides a refined, tranquil setting with local favorites like Joe Muer Seafood and Bill's down the road and nearby accommodations at The Kingsley. This location delivers the perfect balance: elevated, efficient, and quietly exceptional.

Area Amenities Within 0.5 Mile



Birmingham Amenities Down the Road



A Proven Partner

About the Owner

Stoneridge I is owned and managed by one of the largest, most respected and most dedicated office property developers in Southeast Michigan. Kojaian is a family operated local landlord with a portfolio of properties that reflects a 50+ year track record of commercial real estate successes and an unmatched commitment to long-term relationships and sustained tenant success.





KOJAIAN 

kojaian.com

STONERIDGE I

41000 Woodward Avenue | Bloomfield Hills, MI



Brendan George

Senior Vice President

+1 248 351 2039

brendan.george@cbre.com

Jasper Hanifi

Vice President

+1 248 351 2020

jasper.hanifi@cbre.com

KOJAIANO

CBRE

©2025 CBRE, Inc. All rights reserved. This information has been obtained from sources believed reliable, but has not been verified for accuracy or completeness. You should conduct a careful, independent investigation of the property and verify all information. Any reliance on this information is solely at your own risk. CBRE and the CBRE logo are service marks of CBRE, Inc. All other marks displayed on this document are the property of their respective owners, and the use of such logos does not imply any affiliation with or endorsement of CBRE. Photos herein are the property of their respective owners. Use of these images without the express written consent of the owner is prohibited. Text contained in this document has been generated in whole or in part by or with the assistance of generative artificial intelligence. PMStudio_October2025