



Summary

Suite: 201
Available SF: 2,190 SF
Lease Rate: \$34/SF NNN
NNN: \$9/SF

Property Highlights

- Locate yourself above popular restaurants Le Bistro and Evelyn Rose on Church Street
- Great central Vienna location – in the hub of town with signage and good visibility
- Elevator access from structured parking garage
- High ceilings with front & back entrances
- Built out currently with a combination of open space, offices, restroom & kitchen

Demographics

2 Mile

5 Mile

10 Mile

Total Households: 15,696 99,150 427,682

Total Population: 45,614 264,609 1,148,701

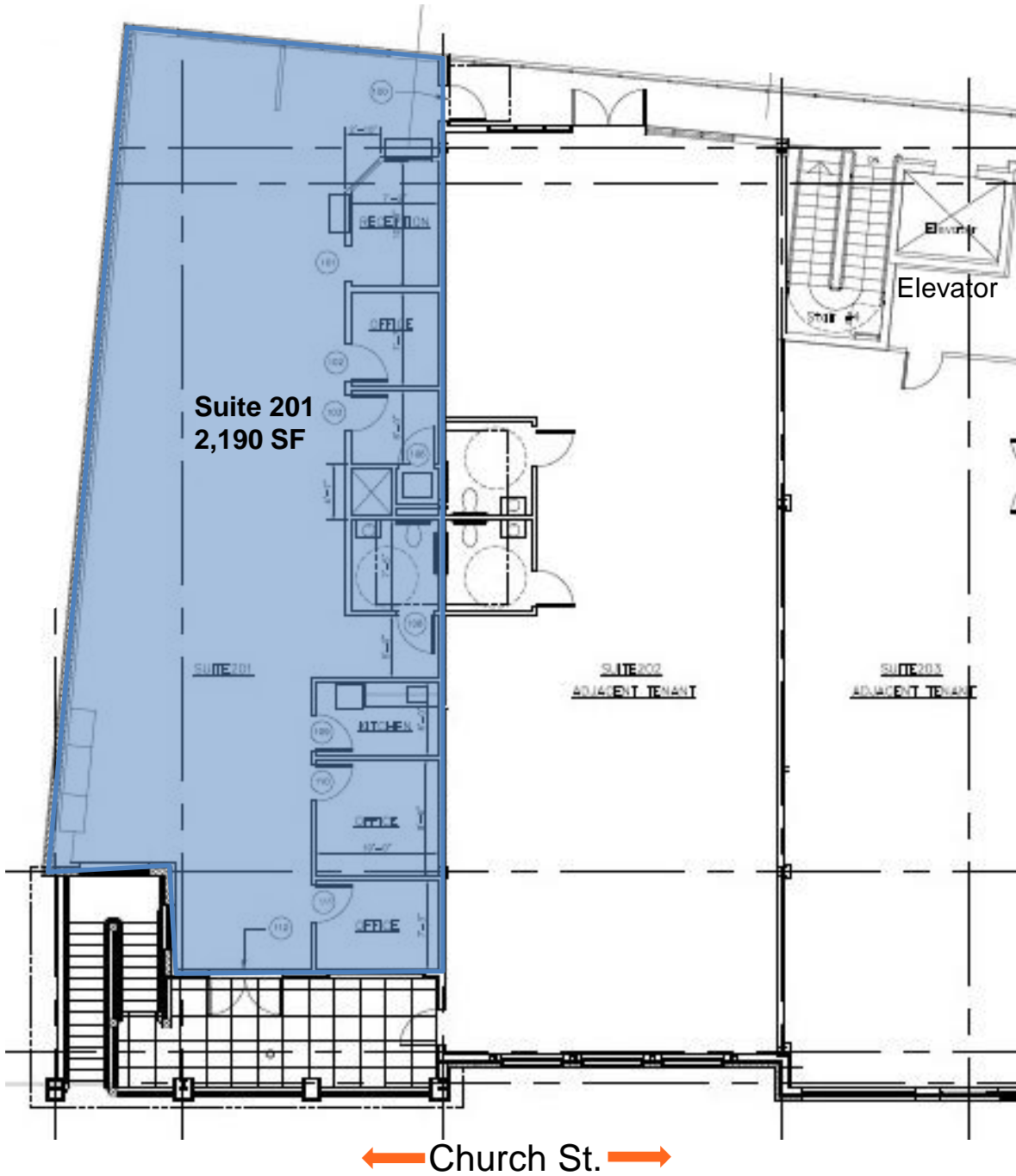
Average HH Income \$204,903 \$175,889 \$165,253

The information above was furnished to us by sources we believe to be reliable but no warranty or representation is made to its accuracy. It is your responsibility to independently confirm its accuracy and completeness. This offering is subject to correction or errors and omissions, change of pricing, prior to sale/lease or withdrawal from the market, without notice.

Ellie Bechtle
703.435.4007 x 107
ebechtle@veritycommercial.com

Mara Conners
703.435.4007 x 112
mconners@veritycommercial.com

Floor Plan



Ellie Bechtle
703.435.4007 x 107
ebechtle@veritycommercial.com

Mara Conners
703.435.4007 x 112
mconners@veritycommercial.com

Photos

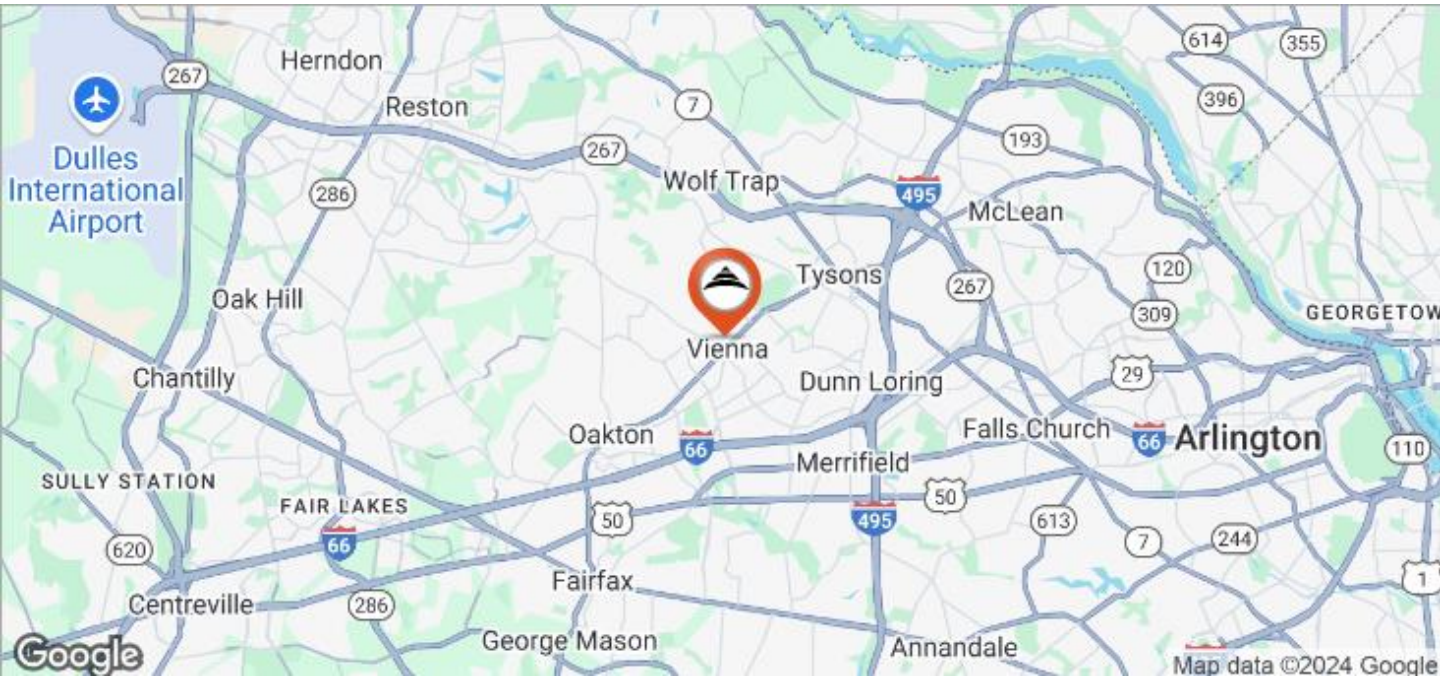


201 open area with 12ft. ceilings



201 waiting room/reception

Maps



Ellie Bechtle
703.435.4007 x 107
ebechtle@veritycommercial.com

Mara Conners
703.435.4007 x 112
mconners@veritycommercial.com