

# FOR SALE

6015 N Francisco Avenue / Chicago, IL

@properties<sup>®</sup>  
COMMERCIAL



## EXCEPTIONAL REDEVELOPMENT / REPURPOSE OPPORTUNITY

### PROPERTY HIGHLIGHTS

- Corner block site in West Ridge Neighborhood
- Primarily residential, mixed-use neighborhood facing Mather Park
- 263 feet of frontage on Francisco Ave., 170 feet frontage on Peterson Ave.
- Masonry-constructed, 3-story building
- Seating for 270 in sanctuary with vaulted, 30-foot ceiling
- Multiple classrooms and offices; gym with 20-foot ceiling
- Large parking lot for 59+- vehicles

### PRICE

Contact Broker

### TOTAL LAND AREA

62,744 SF+- 1.44+- AC

### # OF BUILDINGS

One

### BUILT

c. 1949

### ZONING

RT-4 Residential Two-Flat, Townhouse and Multi-Unit District and B3-2 Community Shopping District

### PARKING

59+- vehicles

### CURRENT USE

Religious

### GRAHAM MITCHELL

312.925.8042

gmitchell@atproperties.com

### NICK PATINKIN

847.204.9653

nickpatinkin@atproperties.com

### ED SCHWARTZ

773.251.0744

edschwartz@atproperties.com

atpropertiescommercial.com

All information furnished is from sources deemed reliable. No representation is made as to the accuracy thereof and it is submitted subject to errors, omissions, changes, or withdrawal without notice.

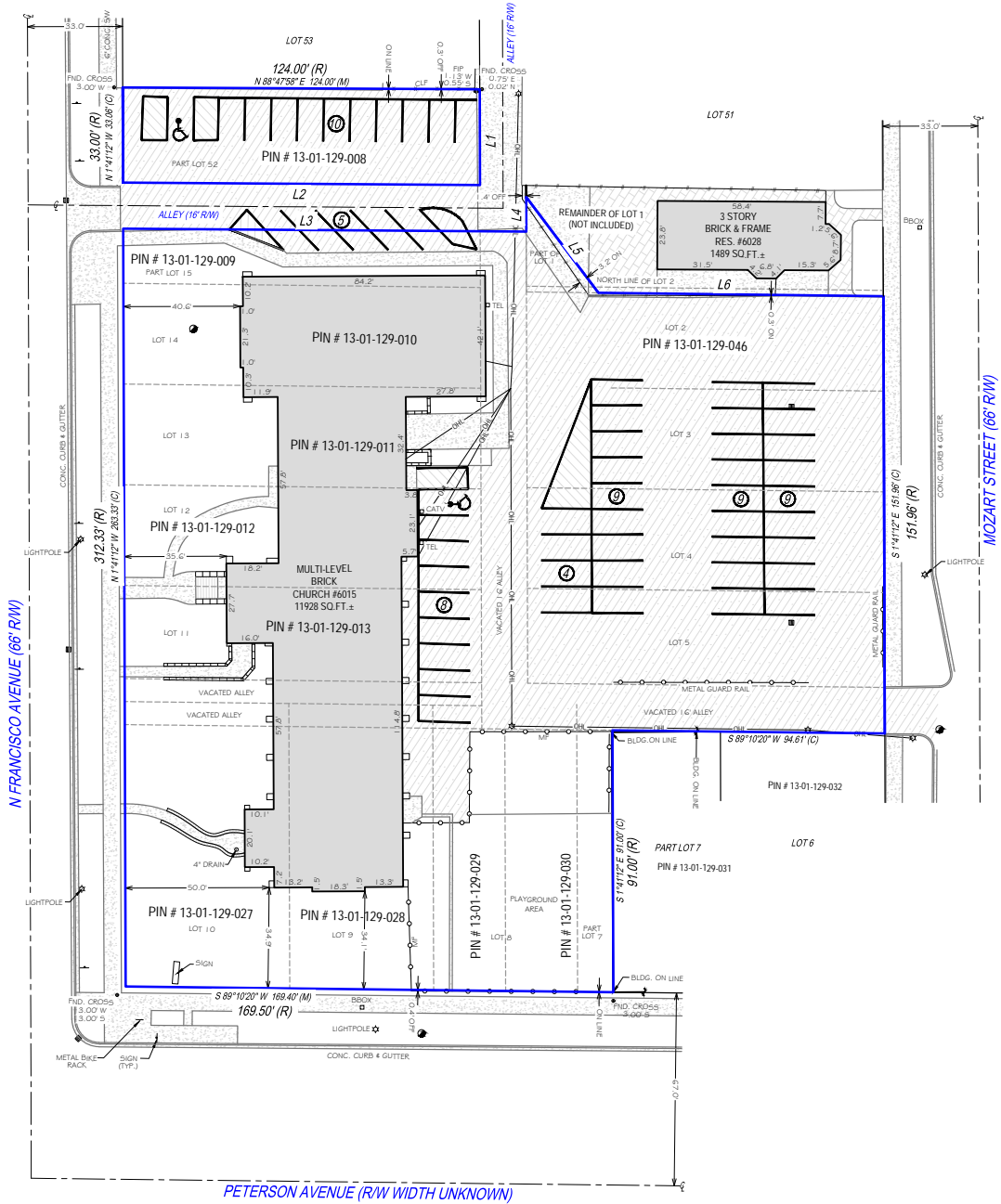


[atpropertiescommercial.com](http://atpropertiescommercial.com)

All information furnished is from sources deemed reliable. No representation is made as to the accuracy thereof and it is submitted subject to errors, omissions, changes, or withdrawal without notice.

 **properties**  
COMMERCIAL

# survey





## demographics

	1 mile	3 mile	5 mile
2022 Estimated Population	56,706	431,053	916,505
2022 Estimated Households	20,261	187,435	400,448
2022 Estimated Average Household Income	\$83,809	\$98,108	\$109,951