

2200 DEFENSE HWY
CROFTON, MD 21114

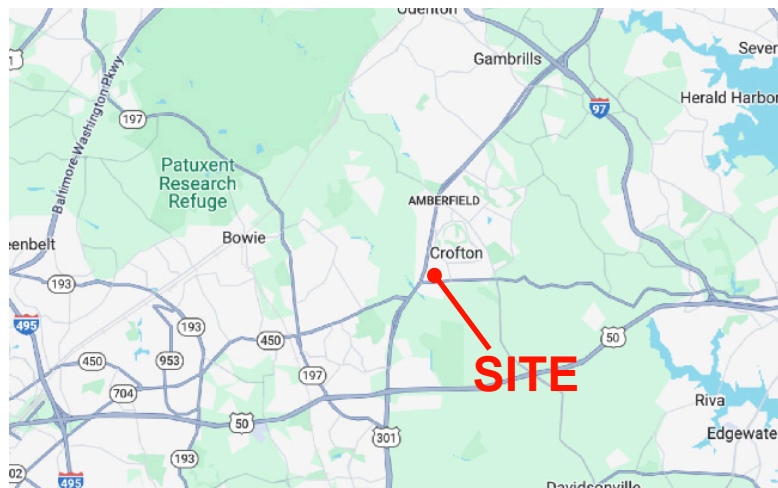


Beautiful Class A Office Professional & Medical Suites Available

- **2 offices available:**
 - Suite 101: ± 1,412 qft
 - Suite 407: ± 2,184 sqft
- Ample Parking - Free and unassigned
- Close proximity to regional shopping centers with restaurants & cafes
- Located on MD-450 with easy access to RT-50 and MD RT-3
- **Lease Rate: \$26.50 (FULL SERVICE)**

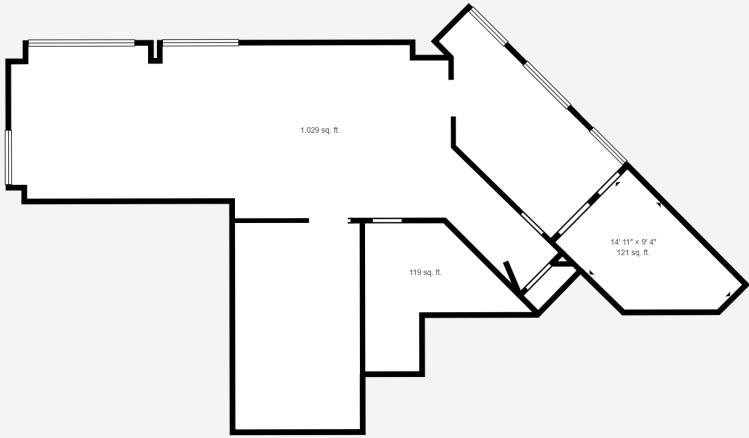
EUGENIA ANTONIS
Commercial Salesperson
410-449-1199
eantonis@friendre.com

MATTHEW ANTONIS
Commercial Salesperson
410-449-1072
mantonis@friendre.com



Main: 410-449-1144 · Fax: 410-983-3956 · friendre.com
8436 Veterans Hwy, Millersville, MD 21108

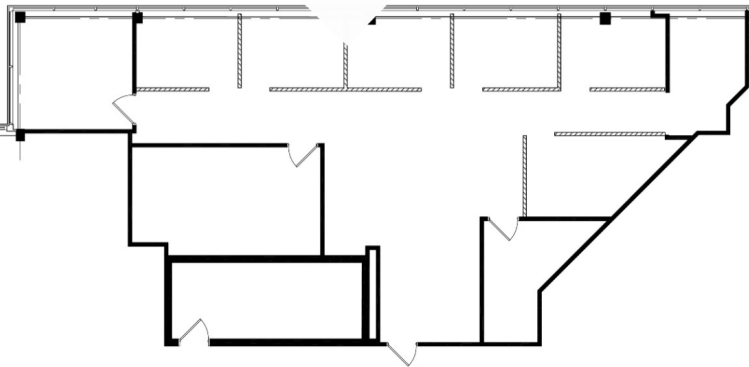
All information is from sources deemed reliable; However, we are not responsible for errors, omissions, misinterpretation, or misuse of information presented; We make no warranty of any kind, express or implied, with respect to the property or any other matters; Information and the property is subject to change, corrections, prior sales, or withdrawal.



Virtual Tour!



Suite 101
± 1,412 sqft



Virtual Tour!



Suite 407
± 2,184 sqft



Main: 410-449-1144 · Fax: 410-983-3956 · friendre.com
8436 Veterans Hwy, Millersville, MD 21108

All information is from sources deemed reliable; However, we are not responsible for errors, omissions, misinterpretation, or misuse of information presented; We make no warranty of any kind, express or implied, with respect to the property or any other matters; Information and the property is subject to change, corrections, prior sales, or withdrawal.



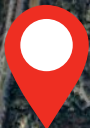

- Target
- Wegmans
- Starbucks
- Crumble Cookies
- Bonfish Grill
- Panera Bread
- DICK'S Sporting Goods

- Namaste Fine Indian Cuisine
- Kodo Hibachi Sushi Lounge
- Blue Dolphin Seafood Bar & Grill
- ALDI

- Otani Japanese Cuisine
- Krispy Kreme
- Chick-fil-A
- CVS
- Bank of America

- Gold's Gym
- Giant
- At Home
- Checkers
- La Tolteca
- Wells Fargo Bank
- Jimmy John's
- Ace Hardware

- Crofton Middle School
- Crofton High School (New - over capacity)


 140,448

Main: 410-449-1144 · Fax: 410-983-3956 · friendre.com
 8436 Veterans Hwy, Millersville, MD 21108

All information is from sources deemed reliable; However, we are not responsible for errors, omissions, misinterpretation, or misuse of information presented; We make no warranty of any kind, express or implied, with respect to the property or any other matters; Information and the property is subject to change, corrections, prior sales, or withdrawal.