



VIEW INTERACTIVE TOUR

7,403 SF AVAILABLE FOR SALE

9210 N. MERIDIAN ST.

INDIANAPOLIS, IN 46260



CUSHMAN &
WAKEFIELD

9210 N. MERIDIAN ST. INDIANAPOLIS, IN 46260

PROPERTY HIGHLIGHTS

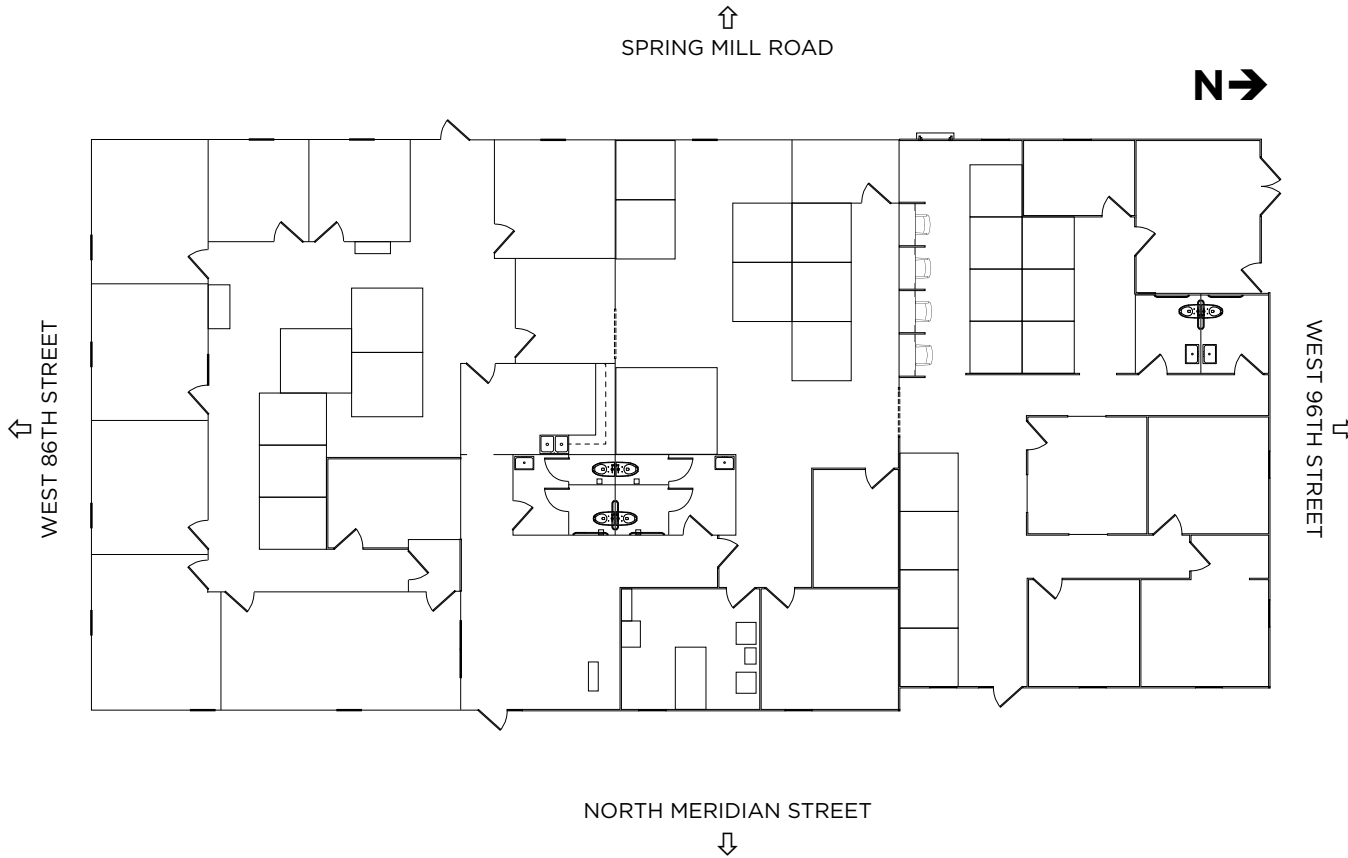
9210 North Meridian Street is a one-story, brick office building located along Meridian Street on the northside of Indianapolis. The facility was built in 1994 and is approximately 7,403 square feet. There is central heating and air, kitchen, multiple restrooms, several offices and open work areas. The immediate area offers abundant amenities and immediate interstate access to I-465 via Meridian Street.

ASKING PRICE: \$1,395,000.00 (\$188.43/SF)



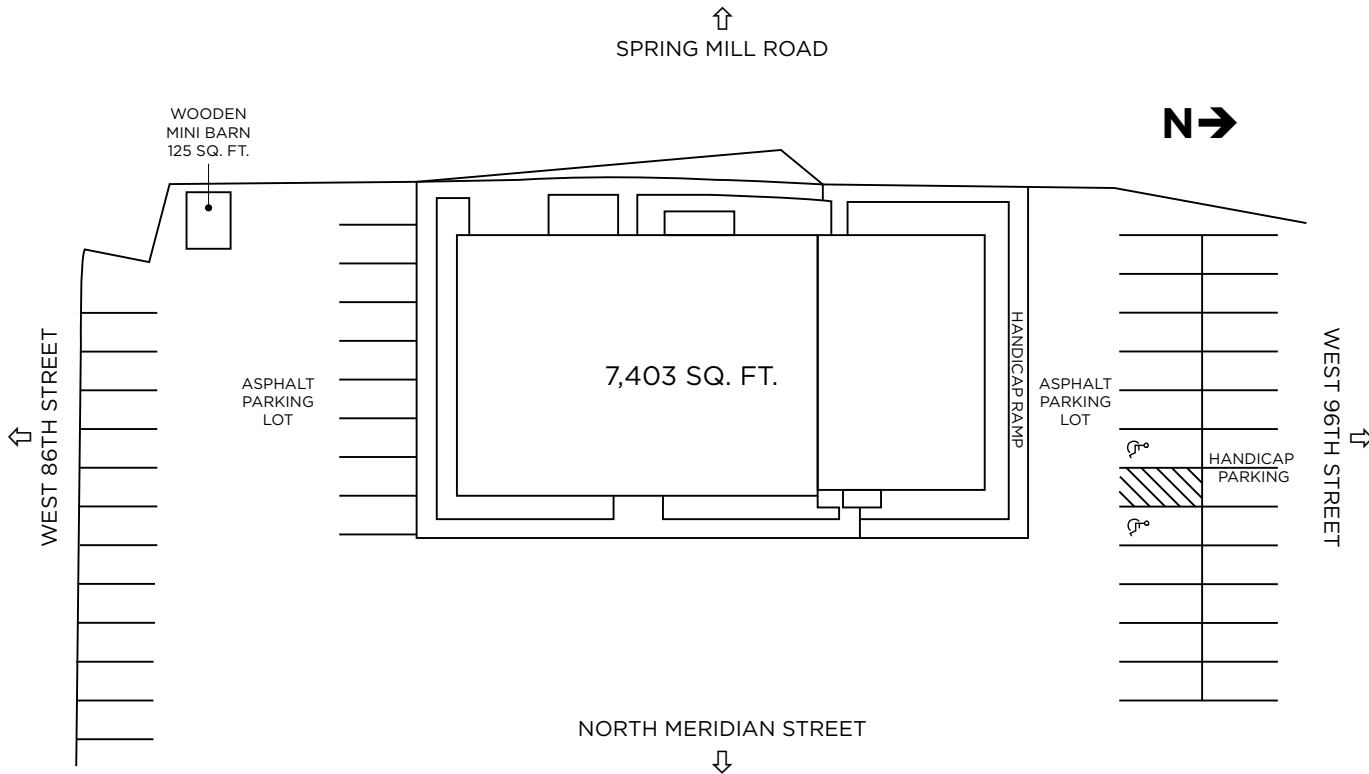
9210 N. MERIDIAN ST.
INDIANAPOLIS, IN 46260

**FLOOR
PLAN**



9210 N. MERIDIAN ST. INDIANAPOLIS, IN 46260

SITE PLAN





 [VIEW INTERACTIVE TOUR](#)

FOR MORE INFORMATION, CONTACT:

BENNETT M. WILLIAMS
+1 317 639 0442
bennett.williams@cushwake.com

One American Square
Suite 1800
Indianapolis, IN 46282
cushmanwakefield.com



©2024 Cushman & Wakefield. All rights reserved. The information contained in this communication is strictly confidential. This information has been obtained from sources believed to be reliable but has not been verified. NO WARRANTY OR REPRESENTATION, EXPRESS OR IMPLIED, IS MADE AS TO THE CONDITION OF THE PROPERTY (OR PROPERTIES) REFERENCED HEREIN OR AS TO THE ACCURACY OR COMPLETENESS OF THE INFORMATION CONTAINED HEREIN, AND SAME IS SUBMITTED SUBJECT TO ERRORS, OMISSIONS, CHANGE OF PRICE, RENTAL OR OTHER CONDITIONS, WITHDRAWAL WITHOUT NOTICE, AND TO ANY SPECIAL LISTING CONDITIONS IMPOSED BY THE PROPERTY OWNER(S). ANY PROJECTIONS, OPINIONS OR ESTIMATES ARE SUBJECT TO UNCERTAINTY AND DO NOT SIGNIFY CURRENT OR FUTURE PROPERTY PERFORMANCE.