

IDEALLY LOCATED
NEAR THE NEXUS OF
I-26 AND I-526



±6,000 SF



WAREHOUSE FOR LEASE

2470 AIR PARK RD. | NORTH CHARLESTON, SC 29406

\$18.00/SF NNN
Passthrough expenses \$5.86/SF

±6,000 square foot flex warehouse in a great location near nexus of I-26 and I-526. Four rollup doors on .82-acre completely fenced site.

Zoning

M-1 Light Industrial



Eastrock Properties, LLC | 856 Lowcountry Blvd., Suite 101 | Mt. Pleasant, SC 29464

Loren Ziff | 843-270-6000 | lziff@eastrockproperties.com

Agent has an ownership interest in this property.

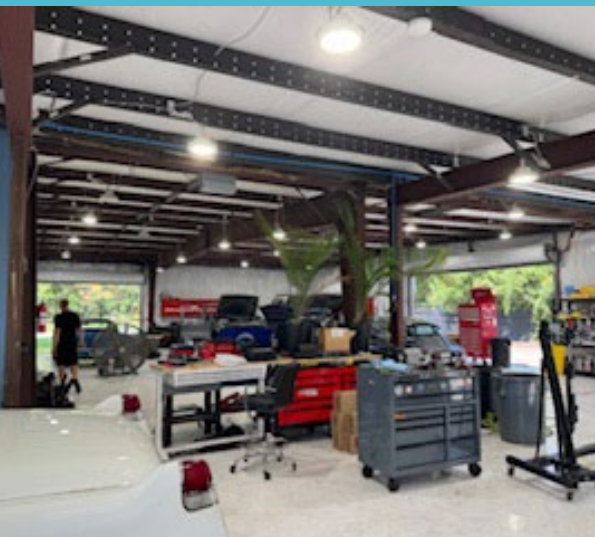
EASTROCK
PROPERTIES, LLC

BUILDING FOR LEASE

2470 AIR PARK RD.
NORTH CHARLESTON, SC 29406

CONTACT LOREN ZIFF

843-270-6000
lziff@eastrockproperties.com



FLOOR PLAN HEIGHT RANGES: $\pm 10'$ TO $12'$

