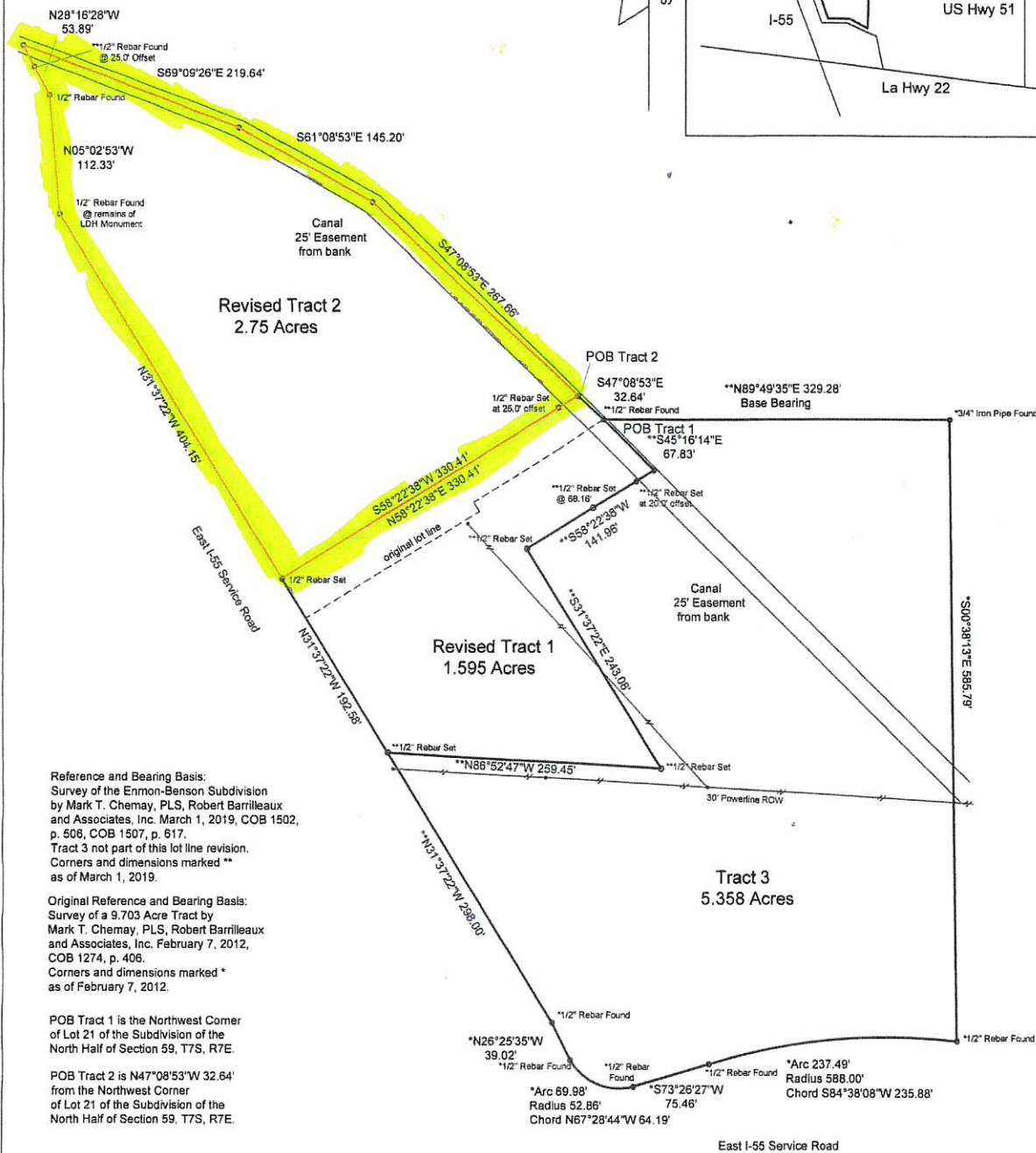
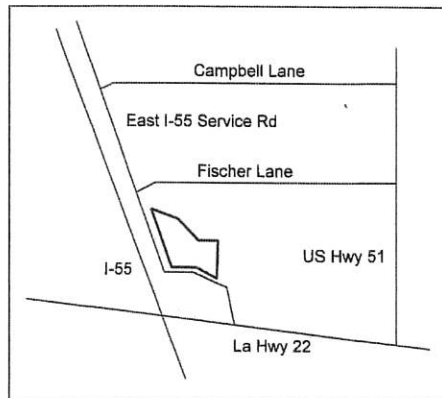


Map Showing Survey  
 the Enmon Enterprises LLC  
 and I-55 Properties LLC  
 Lot Line Revision of Tracts 1 & 2  
 of the Enmon-Benson Subdivision  
 Section 59, T7S, R7E  
 City of Ponchatoula  
 Tangipahoa Parish, Louisiana



Reference and Bearing Basis:  
 Survey of the Enmon-Benson Subdivision  
 by Mark T. Chemay, PLS, Robert Barrilleaux  
 and Associates, Inc. March 1, 2019, COB 1502,  
 p. 506, COB 1507, p. 617.  
 Tract 3 not part of this lot line revision.  
 Corners and dimensions marked \*\*  
 as of March 1, 2019.

Original Reference and Bearing Basis:  
 Survey of a 9.703 Acre Tract by  
 Mark T. Chemay, PLS, Robert Barrilleaux  
 and Associates, Inc. February 7, 2012,  
 COB 1274, p. 406.  
 Corners and dimensions marked \*  
 as of February 7, 2012.

POB Tract 1 is the Northwest Corner  
 of Lot 21 of the Subdivision of the  
 North Half of Section 59, T7S, R7E

POB Tract 2 is N47°08'53"W 32.64'  
 from the Northwest Corner  
 of Lot 21 of the Subdivision of the  
 North Half of Section 59, T7S, R7E.



*Mark T. Chemay*  
 Mark T. Chemay PLS 4560  
 8.15.2023  
 August 15, 2023

I certify that this map represents an actual ground survey made by me  
 and conforms to the Standards of Practice for Property Boundary  
 Surveys as defined in LAC 46:LX1 Chapter 29 for a Class B Survey.

Robert Barrilleaux  
 and Associates, Inc.  
 Engineers-Land Surveyors  
 42333 Deluxe Plaza #8  
 Hammond, La. 70403  
 985-542-0391