

## IDEALLY SITUATED DIVISADERO CORRIDOR MEDICAL OFFICE

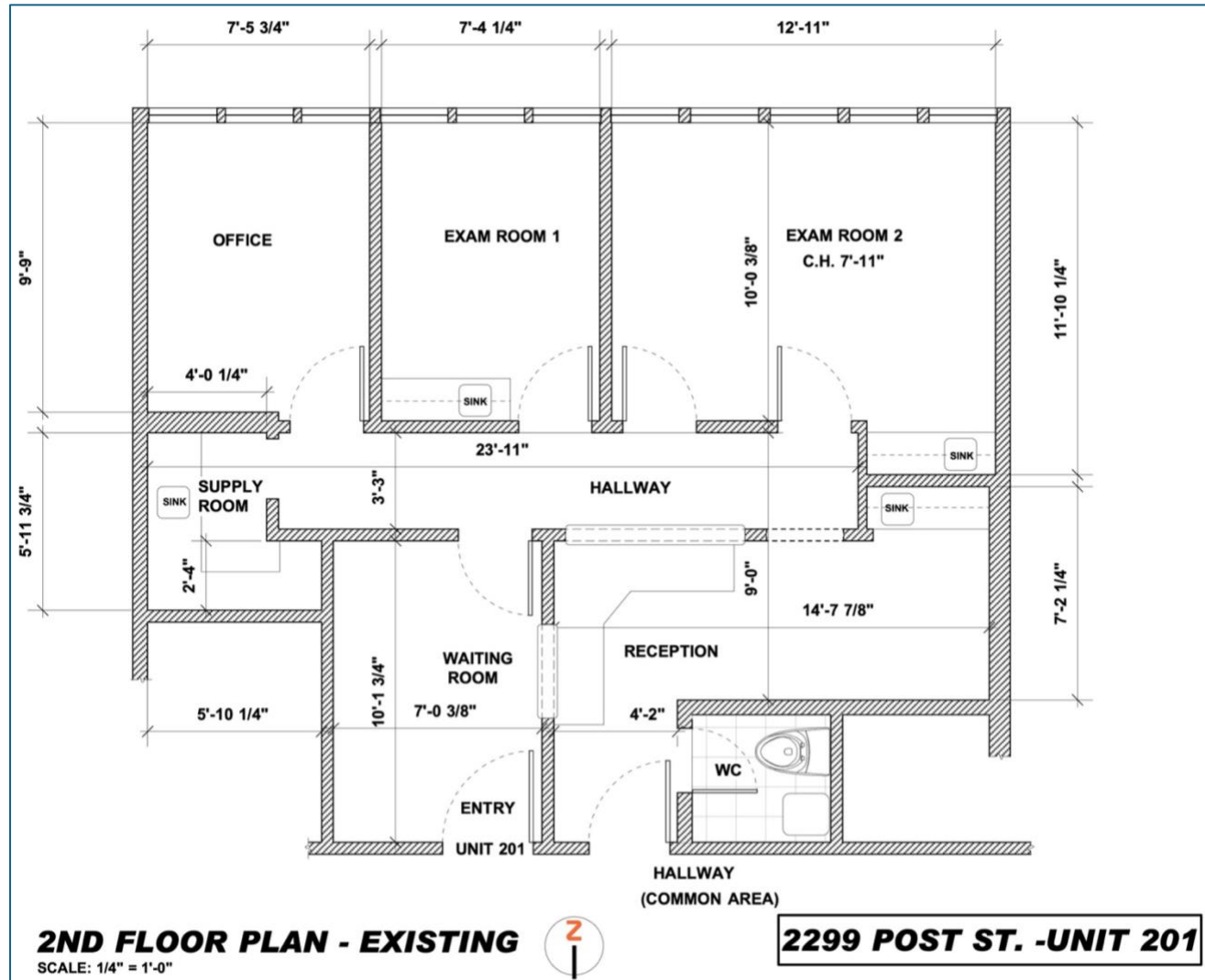
2299 Post Street, #201, San Francisco, CA 94115 | ASKING PRICE \$556,000

- 640 Square Feet
- Two Examination Rooms
- Private Office
- Flexible Storage/Lab/Kitchenette
- Waiting Room
- Reception Area
- Private Bathroom
- Leased Parking Space



Second floor office in well-maintained and ideally situated medical office complex off Divisadero, with patient entrances on Post and Geary. Located near UCSF Mt. Zion, Kaiser Permanente Medical Center, and UCSF shuttle stop. Association dues of \$1,437 per month cover professional management, building insurance, HVAC, janitorial service, and common area security and maintenance. There is a leased parking space available in a gated lot as well as additional paid parking for patients and staff.

Do not disturb during office hours. Easy to show by appointment in evenings and on weekends. Owners in the condominium association will have first right of refusal.



**MAELIN WANG, DRE 00557892**  
3119 GEARY BOULEVARD  
SAN FRANCISCO, CALIFORNIA 94118

**C 415.699.1877**  
**T 415.221.2460**  
**F 415.520.9666**

All material is intended for informational purposes only and is compiled from sources deemed reliable but is subject to errors, omissions, changes in price, condition, sale, or withdrawal without notice. No statement is made as to the accuracy of any description or measurements (including square footage).